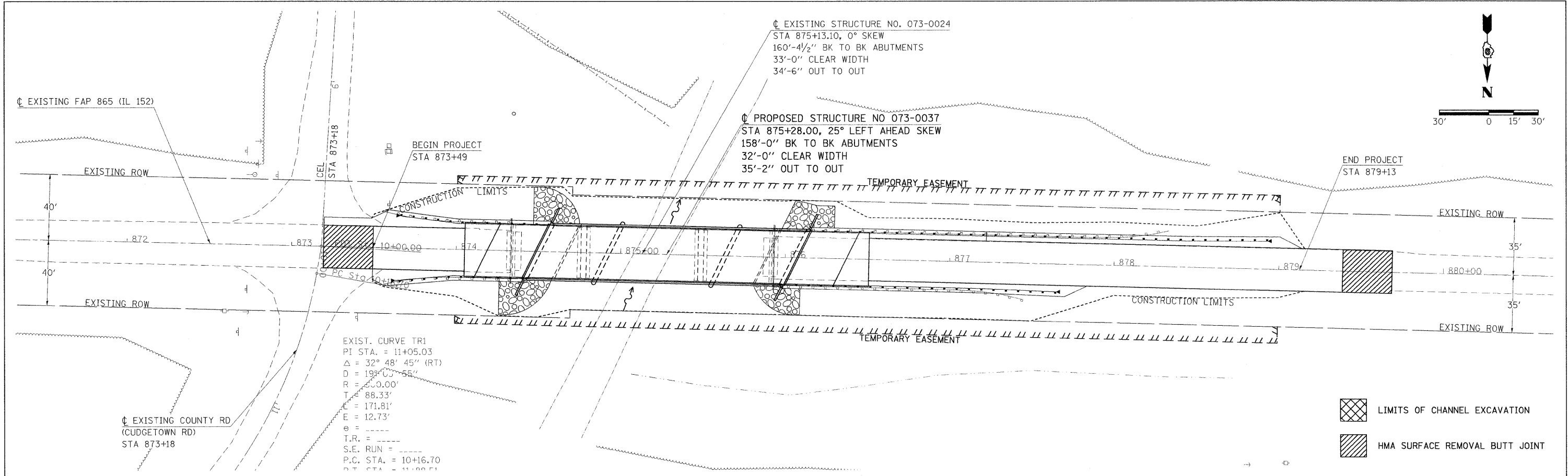


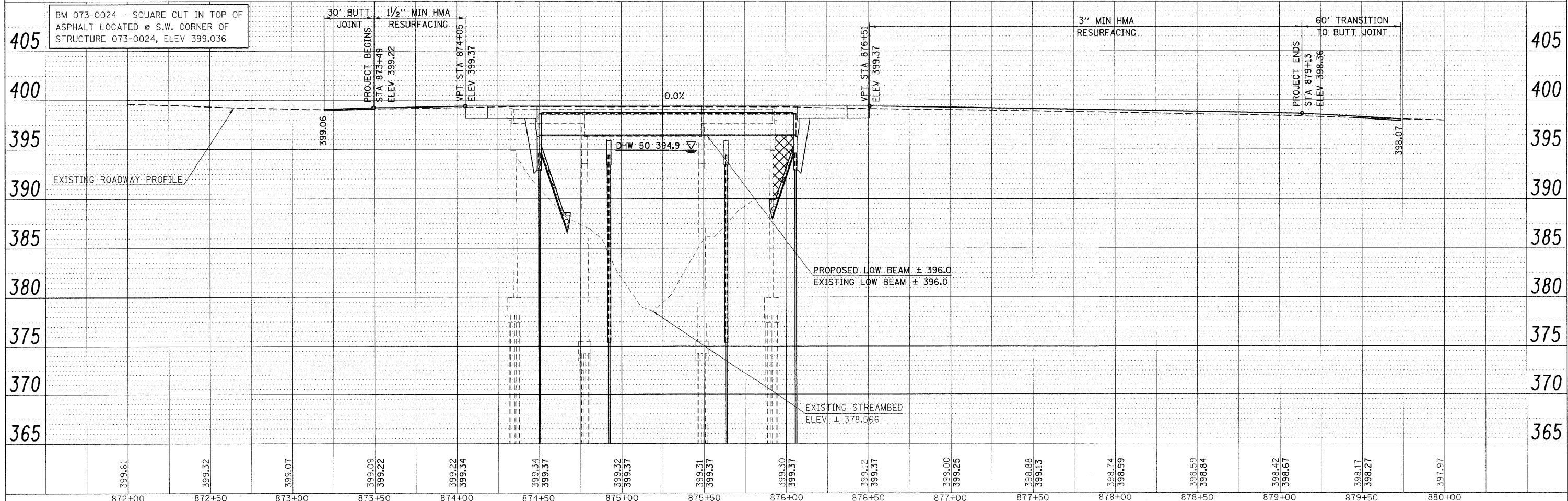
DATE: _____ BY: _____
 SURVEYED _____
 ALIGNED _____
 RT. OF WAY CHECKED _____
 NO. _____
 NO. _____



EXIST. CURVE TRI
 PI STA. = 11+05.03
 $\Delta = 32^\circ 48' 45''$ (RT)
 $D = 199' 00'' 55''$
 $R = 300.00'$
 $T = 88.33'$
 $E = 171.81'$
 $E = 12.73'$
 T.R. = _____
 S.E. RUN = _____
 P.C. STA. = 10+16.70
 P.T. STA. = 11+09.51

LIMITS OF CHANNEL EXCAVATION
 HMA SURFACE REMOVAL BUTT JOINT

DATE: _____ BY: _____
 SURVEYED _____
 CHECKED _____
 NO. _____
 NO. _____



FILE NAME =	USER NAME = halsteadtw	DESIGNED -	REVISED -	STATE OF ILLINOIS DEPARTMENT OF TRANSPORTATION	PLAN & PROFILE	F.A.P. RTE.	SECTION	COUNTY	TOTAL SHEETS	SHEET NO.	
ci:\pw_work\pwidot\halsteadtw\dms49780\d978064_sht_plnprf.dgn	0064_sht_plnprf.dgn	DRAWN -	REVISED -			865	16B-2	PERRY	47	8	
PLOT SCALE = 30.0000' / IN.		CHECKED -	REVISED -			CONTRACT NO. 78064					
PLOT DATE = 6/8/2009		DATE -	REVISED -			FED. ROAD DIST. NO. [ILLINOIS] FED. AID PROJECT					