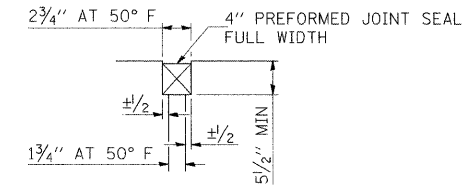
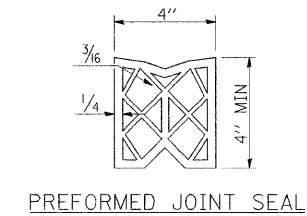
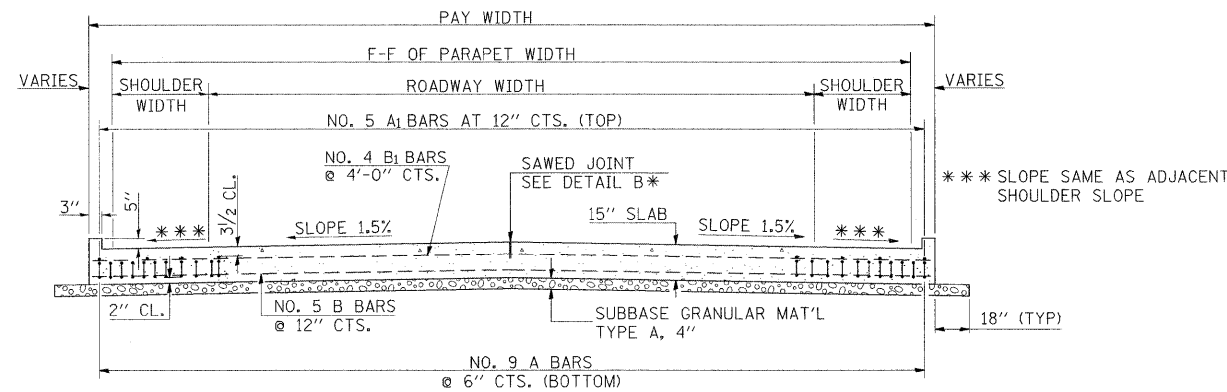


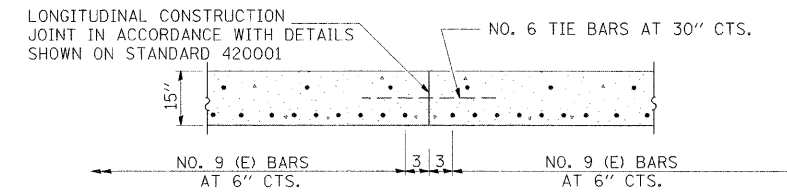
SECTION C-C  
 Ⓛ STAGGER NO. 9 A BARS AS SHOWN ON PLAN - FULL WIDTH



DETAIL A

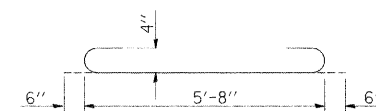


SECTION D-D  
 (SEE PLAN FOR DIMENSIONS NOT SHOWN)

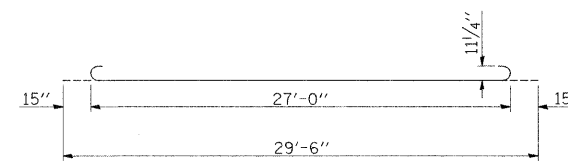


OPTIONAL LONGITUDINAL  
 CONSTRUCTION JOINT

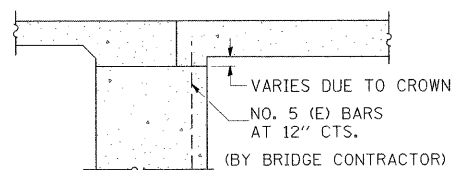
AS APPROVED BY THE ENGINEER, THE CONTRACTOR MAY ELECT TO REDUCE THE WIDTHS OF POUR BY USE OF THE OPTIONAL LONGITUDINAL CONSTRUCTION JOINT SHOWN. JOINTS SHALL BE LOCATED AT THE EDGE OF A TRAFFIC LANE



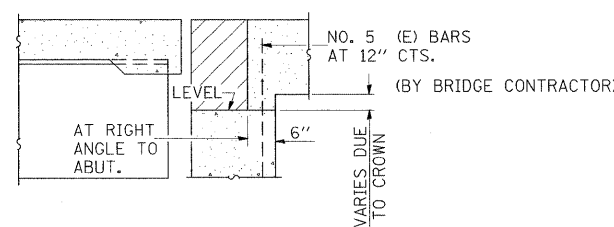
BAR a2



BAR a



SECTION E-E  
 (INTEGRAL ABUTMENTS)



SECTION E-E  
 (JOINTED ABUTMENTS)

DESIGN STRESSES

$f_y = 60,000$  P.S.I. (400 MPa)  
 $f'_c = 3,500$  P.S.I. (24 MPa)  
 $n = 8.5$

BRIDGE APPROACH PAVEMENT DETAIL  
 IL 152 OVER PANTHER CREEK  
 PERRY COUNTY  
 SN 073-0037

FILE NAME =	USER NAME = halsteadw	DESIGNED - ---	REVISED -	<b>STATE OF ILLINOIS DEPARTMENT OF TRANSPORTATION</b>	<b>BRIDGE APPROACH PAVEMENT DETAIL IL 152 OVER PANTHER CREEK</b>			F.A.P. RTE. 865	SECTION 16B-2	COUNTY PERRY	TOTAL SHEETS 47	SHEET NO. 16
ct:\pwwork\pwwid01\HALSTEADT\ms49780	978064.sht_misc.dgn	DRAWN - ---	REVISED -					SCALE: N.T.S.	SHEET NO.	OF SHEETS	STA. TO STA.	FED. ROAD DIST. NO.
78064\CADD\SHETS\0978064_SHT_MISC.DGN	PLOT SCALE = 50.0000' / IN.	CHECKED - ---	REVISED -									
	PLOT DATE = 6/8/2009	DATE - 11/2008	REVISED -									