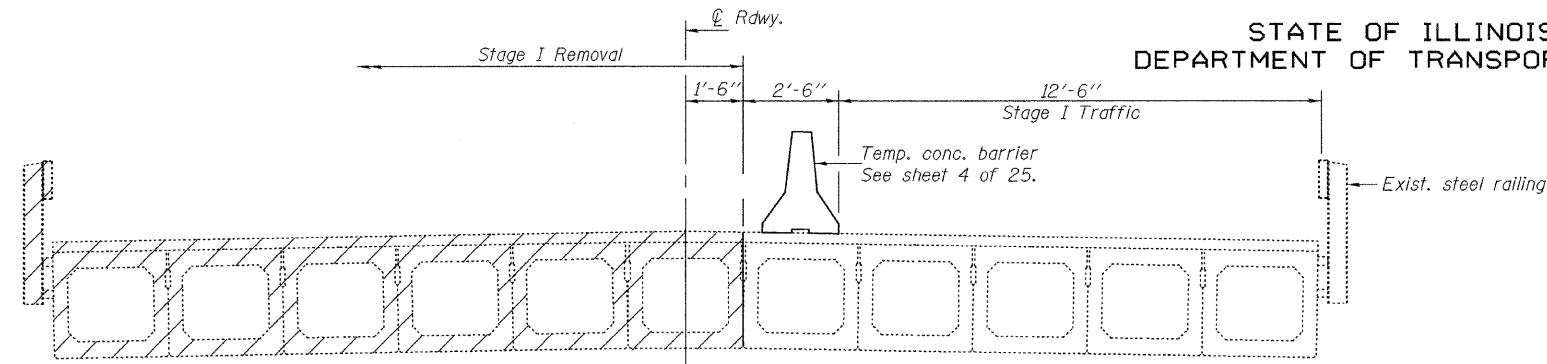
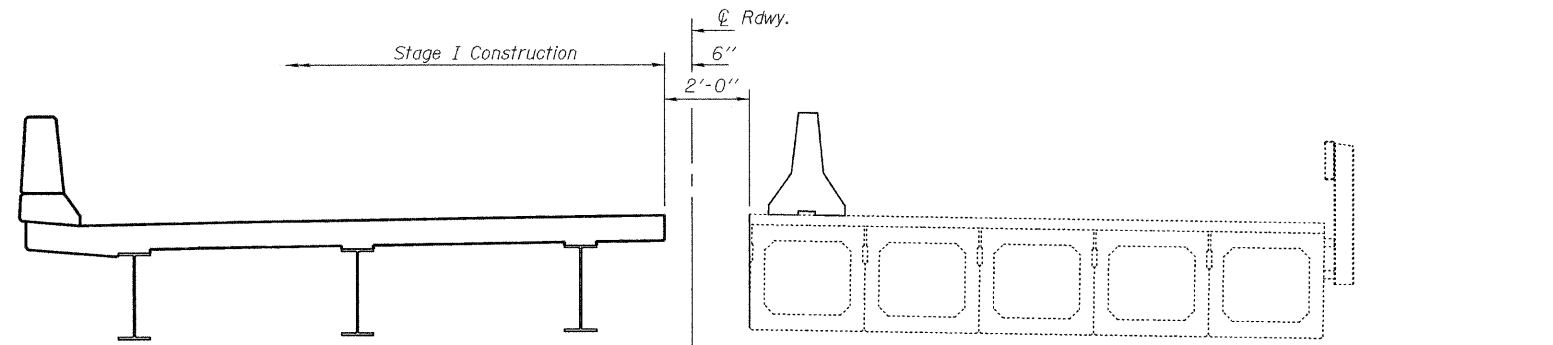


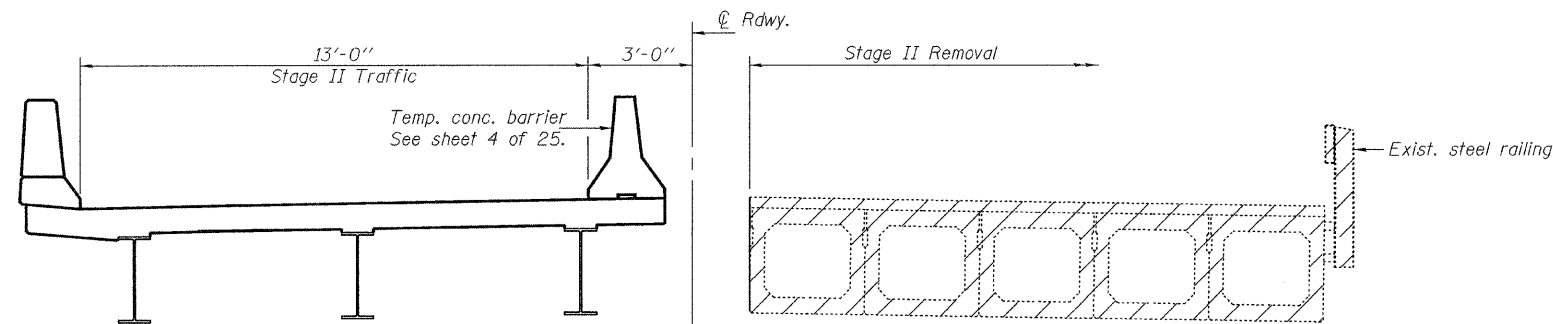
STATE OF ILLINOIS  
DEPARTMENT OF TRANSPORTATION



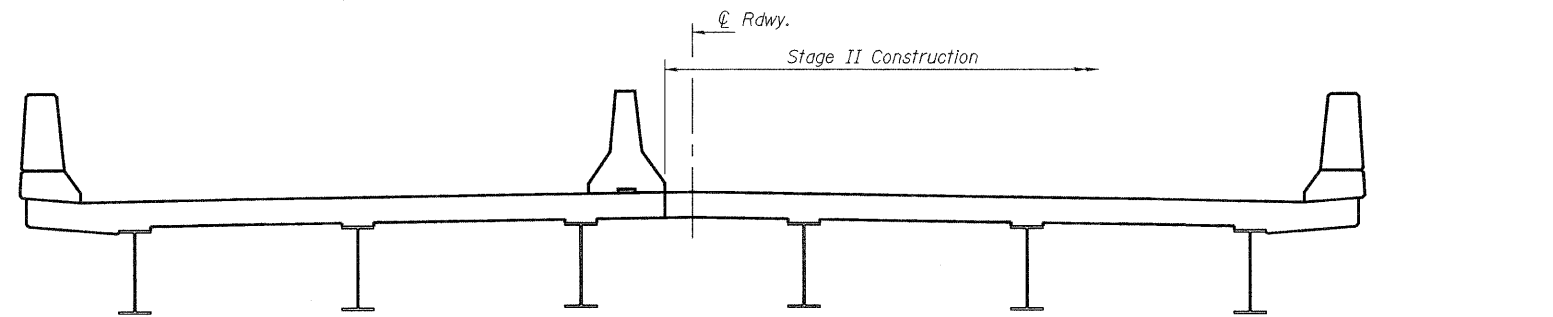
**STAGE I REMOVAL**



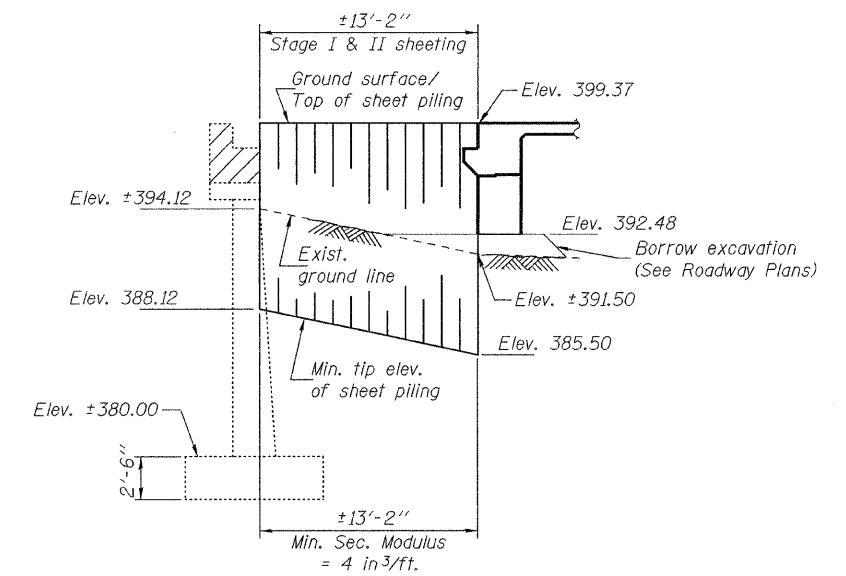
**STAGE I CONSTRUCTION**



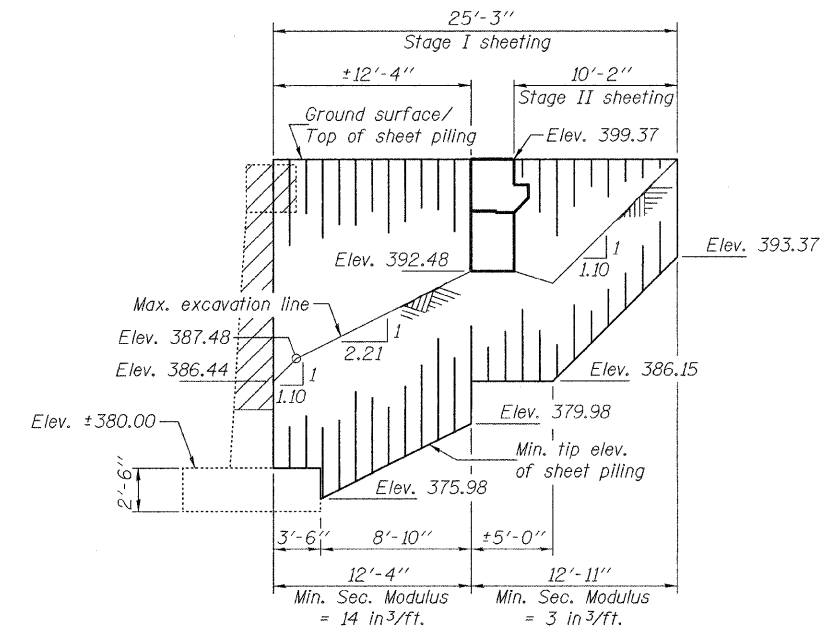
**STAGE II REMOVAL**



**STAGE II CONSTRUCTION**



**TEMPORARY SHEET PILING AT EAST ABUT.**



**TEMPORARY SHEET PILING AT WEST ABUT.**

Notes: If the Contractor chooses to alter the temporary cantilevered sheet piling design requirements shown on the plans, a design submittal including plan details and calculations will be required for review and acceptance by the Engineer. The Contractor shall connect the first sheet to the existing abutment wall to ensure stability of sheets driven to the top of the existing footing. This connection shall be reviewed and accepted by the Engineer and included in the cost for Temporary Sheet Piling.

DESIGNED	Stephen M. Ryan
CHECKED	Jay D. Edwards
DRAWN	h.t. duong
CHECKED	SMR/JDE

EXAMINED	Thomas J. Damagala ENGINEER OF BRIDGE DESIGN
PASSED	Ralph E. Anderson ENGINEER OF BRIDGES AND STRUCTURES

Notes: Hatched areas indicate removal of existing structures. For quantity of temporary concrete barrier, see Roadway Plans. All cross sections are looking west.

**STAGE CONSTRUCTION DETAILS  
STRUCTURE NO. 073-0037**

SHEET NO. 3	F.A.P. RTE. 865	SECTION 16B-2	COUNTY PERRY	TOTAL SHEETS 47	SHEET NO. 25
25 SHEETS			CONTRACT NO. 78064		
FED. ROAD DIST. NO. _		ILLINOIS	FED. AID PROJECT		