

F.A. RTE.	SECTION	COUNTY	TOTAL SHEETS	SHEET NO.
877	101B-1	WHITE	42	1
FED. ROAD DIST. NO.		ILLINOIS	CONTRACT NO. 78084	

STATE OF ILLINOIS
DEPARTMENT OF TRANSPORTATION
DIVISION OF HIGHWAYS

PROPOSED
HIGHWAY PLANS

FOR INDEX OF SHEETS, SEE SHEET NO. 2
FOR SUMMARY OF QUANTITIES, SEE SHEET NO. 3

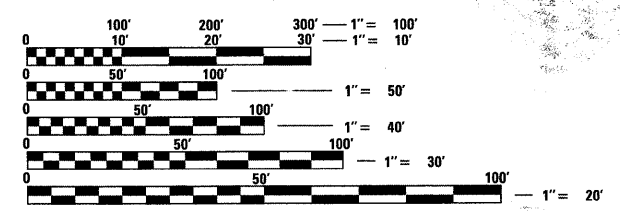
TRAFFIC DATA:
 2007 ADT FOR FAP 877 (IL 141)
 2,250 WITH 19.3% TRUCKS

FAP ROUTE 877 (IL 141)
SECTION 101B-1
PROJECT ESP-0877(013)
WHITE COUNTY
C-99-071-08

STRUCTURE REPLACEMENT OVER TRIBUTARY TO CANE CREEK

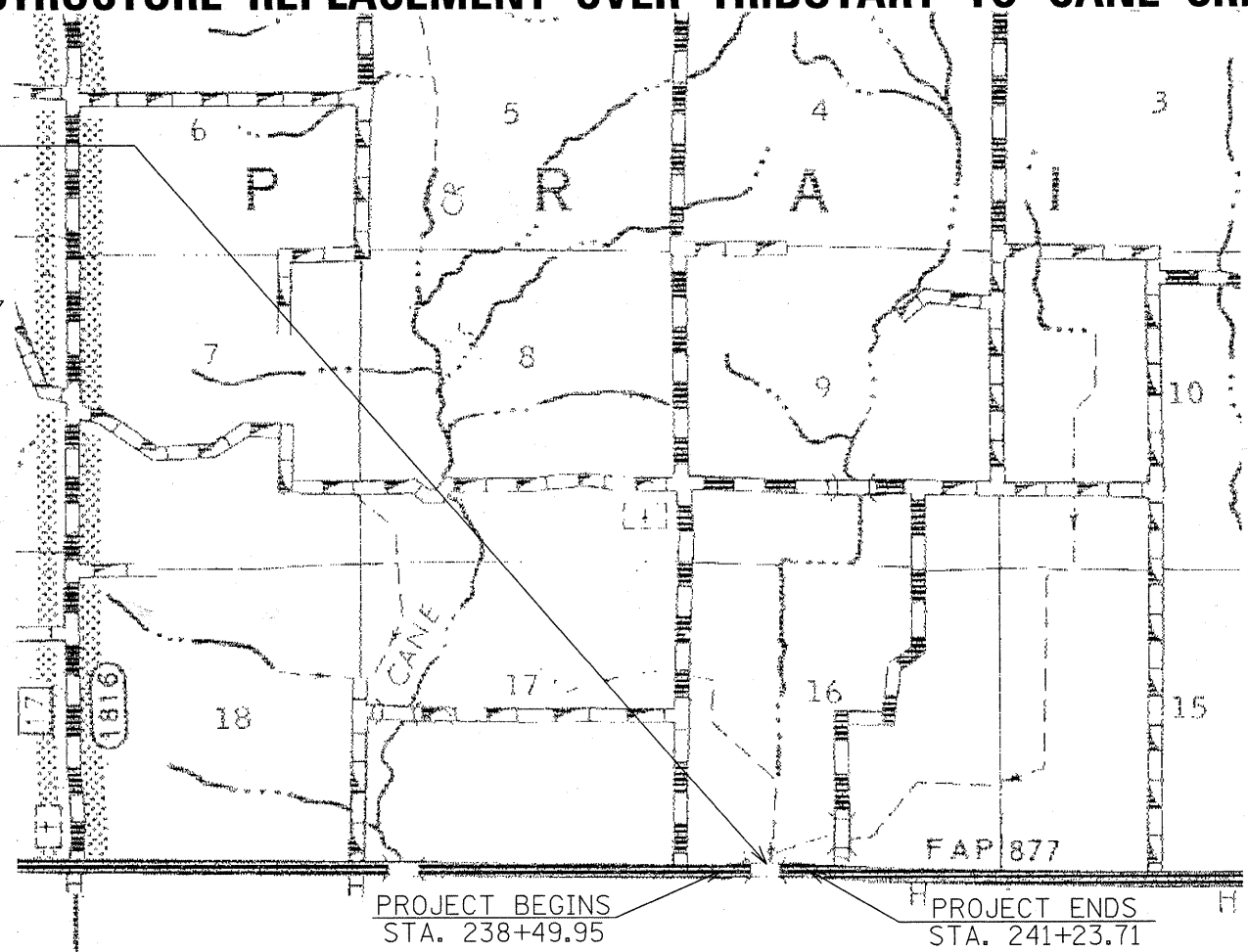
PROPOSED BRIDGE ON IL 141
 OVER TRIBUTARY TO CANE CREEK
 STRUCTURE NUMBER 097-0073
 STRUCTURE @ STA. 239+85.00
 SINGLE SPAN-STEEL BEAM BRIDGE
 85'-0" BK TO BK ABUTS: 30° SKEW
 EXIST. STRUCTURE NUMBER 097-0037

TOWNSHIPS: HERALDS PRAIRIE



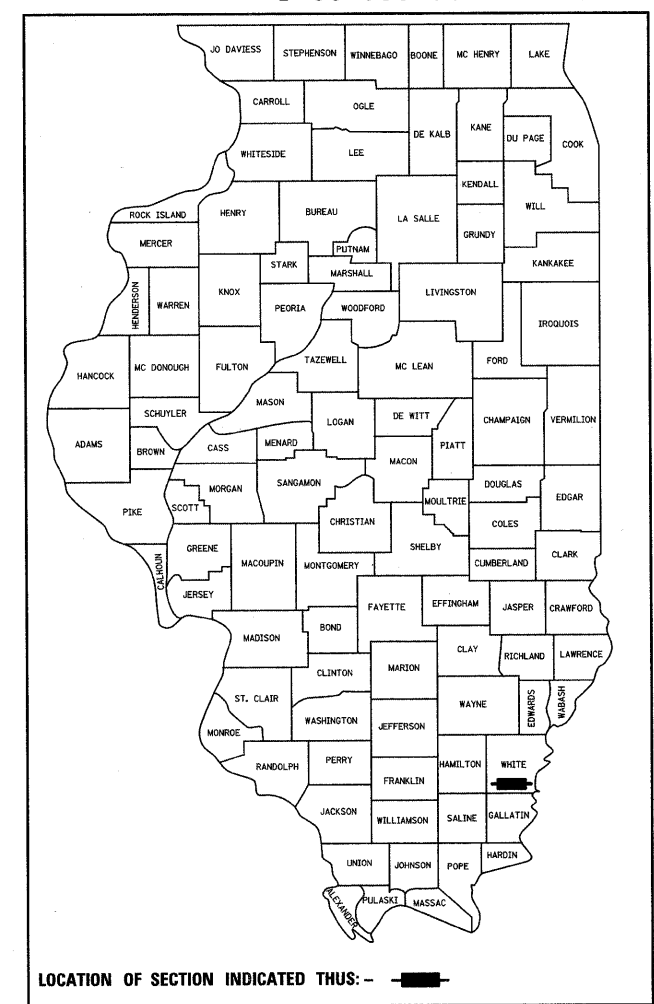
FULL SIZE PLANS HAVE BEEN PREPARED USING STANDARD ENGINEERING SCALES. REDUCED SIZED PLANS WILL NOT CONFORM TO STANDARD SCALES. IN MAKING MEASUREMENTS ON REDUCED PLANS, THE ABOVE SCALES MAY BE USED.

J.U.L.I.E.
 JOINT UTILITY LOCATION INFORMATION FOR EXCAVATION
 1-800-892-0123
 OR 811

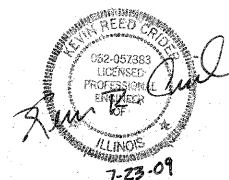


FAP RTE 877 (IL 141):
 GROSS LENGTH OF PROJECT : 274 FT. = .05 MILES
 SN 097-0073
 ROADWAY LENGTH = 189 FT
 BRIDGE LENGTH = 85 FT
 NET LENGTH OF PROJECT = 274 FT

APPROX. SCALE
 1" = 1500'



LOCATION OF SECTION INDICATED THIS: - - -



601 NORTH 4th STREET MURRAY, KENTUCKY 42071 • 800 SOUTH 17th STREET PADUCAH, KENTUCKY 42003 • 403 NORTH COURT STREET MARION, ILLINOIS 62959
 PHONE - 270.753.7307 • PHONE - 270.443.1695 • PHONE - 618.997.9190
 WWW.GEOTECHENGINEERS.NET COPYRIGHT © 2009 - GEOTECH ENGINEERING & TESTING, INC.

STATE OF ILLINOIS
 DEPARTMENT OF TRANSPORTATION
 DIVISION OF HIGHWAYS

SUBMITTED August 6 20 09

Mary C. Lorie
 DEPUTY DIRECTOR OF HIGHWAYS, REGION ENGINEER

October 2, 20 09
Charles G. Ingersoll
 ENGINEER OF DESIGN AND ENVIRONMENT

October 2, 20 09
Christine M. Reed
 DIRECTOR OF HIGHWAYS, CHIEF ENGINEER

PRINTED BY THE AUTHORITY
OF THE STATE OF ILLINOIS

PROJECT ENGINEER DAVID PICHE (618) 549-2171

CONTRACT NO. 78084