

PROP. CURVE CL1-1  
 PI STA. = 307+66.89  
 $\Delta = 5^\circ 47' 23''$  (RT)  
 $D = 0^\circ 57' 57''$   
 $R = 5,932.64'$   
 $T = 300.00'$   
 $L = 599.49'$   
 $E = 7.58'$   
 $\theta = 3\%$   
 $T.R. = 54'$   
 $S.E. RUN = 135'$   
 $P.C. STA = 304+66.89$   
 $P.T. STA = 310+66.38$

• TO AVOID PONDING, THE TRANSITION WILL OCCUR OVER TWO SEGMENTS KEEPING THE CROSS SLOPE A UNIFORM 2% OVER THE PROP. BOX CULVERT.

HMA SC "D" N70, 2"  
 HMA BC IL-19.0 N70 9"  
 AGG SUBGRADE 12"  
 STA 307+00.00 TO  
 STA 314+00.00

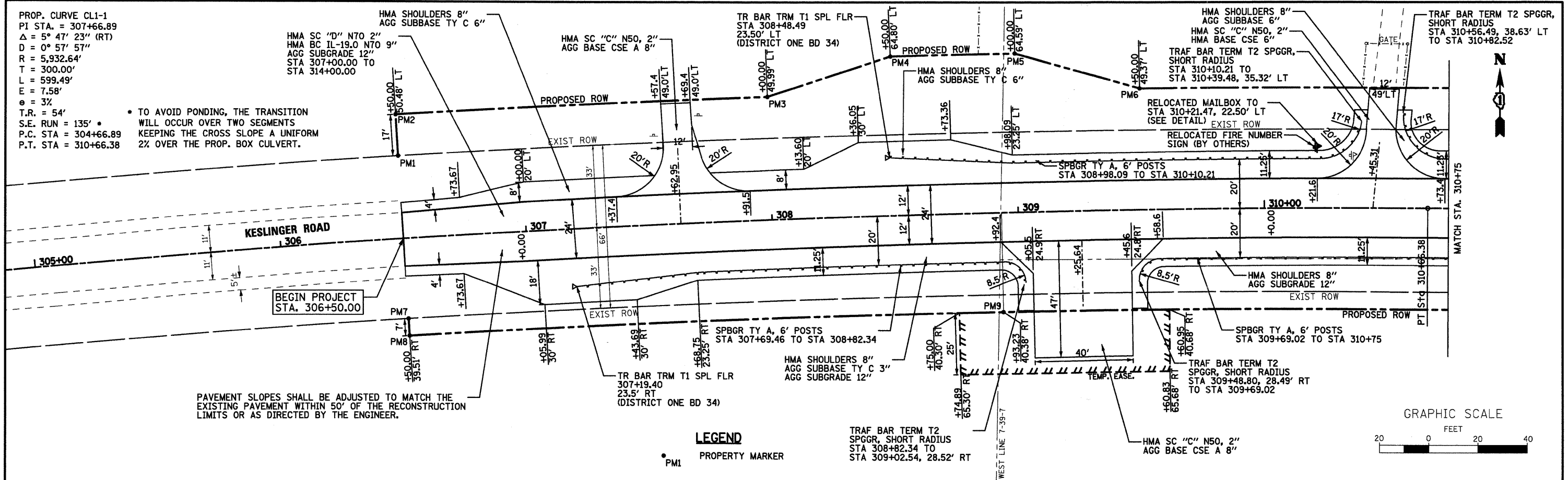
HMA SC "C" N50, 2"  
 AGG BASE CSE A 8"

TR BAR TRM T1 SPL FLR  
 STA 308+48.49  
 23.50' LT  
 (DISTRICT ONE BD 34)

HMA SHOULDERS 8"  
 AGG SUBBASE 6"  
 HMA SC "C" N50, 2"  
 HMA BASE CSE 6"  
 TRAF BAR TERM T2 SPGGR,  
 SHORT RADIUS  
 STA 310+10.21 TO  
 STA 310+39.48, 35.32' LT

TRAF BAR TERM T2 SPGGR,  
 SHORT RADIUS  
 STA 310+56.49, 38.63' LT  
 TO STA 310+82.52

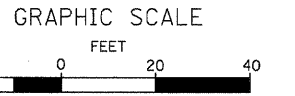
PLAN	DATE
BY	
REVISIONS	
NO.	
DATE	
BY	
REVISIONS	
NO.	
DATE	
BY	
REVISIONS	
NO.	
DATE	



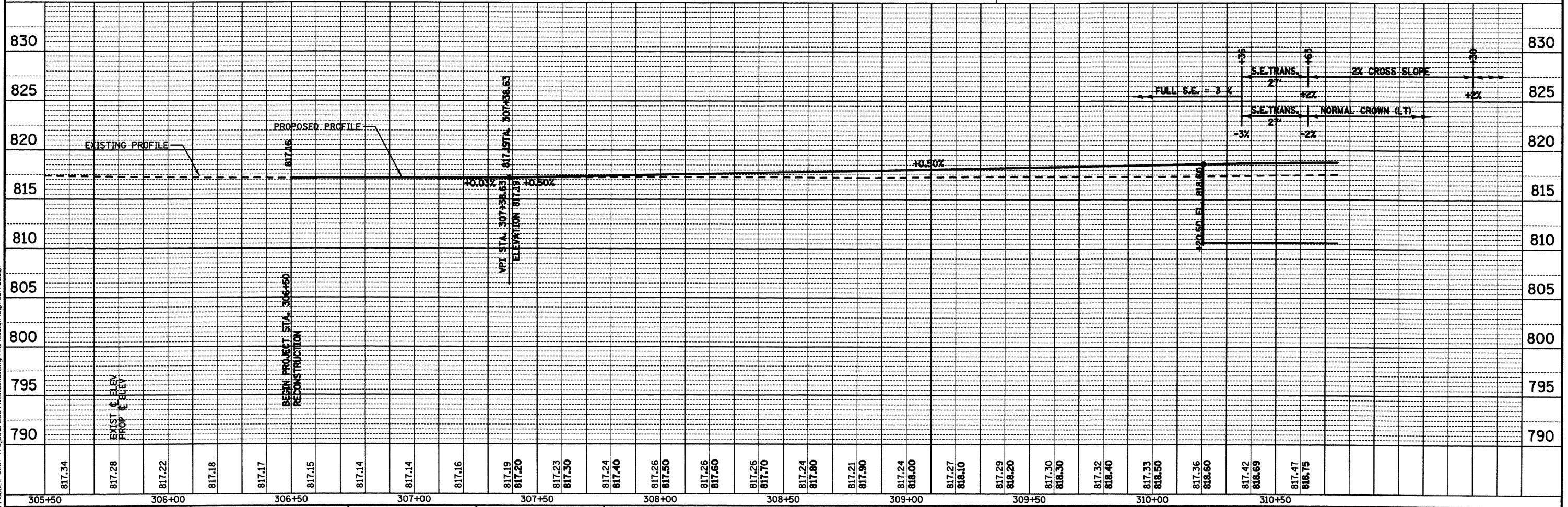
PAVEMENT SLOPES SHALL BE ADJUSTED TO MATCH THE EXISTING PAVEMENT WITHIN 50' OF THE RECONSTRUCTION LIMITS OR AS DIRECTED BY THE ENGINEER.

**LEGEND**  
 • PM1 PROPERTY MARKER

TRAF BAR TERM T2  
 SPGGR, SHORT RADIUS  
 STA 308+82.34 TO  
 STA 309+02.54, 28.52' RT



PROFILE	DATE
BY	
REVISIONS	
NO.	
DATE	
BY	
REVISIONS	
NO.	
DATE	
BY	
REVISIONS	
NO.	
DATE	



<p>WILLS BURKE KELSEY ASSOCIATES LTD.          116 West Main Street, Suite 201          St. Charles, Illinois 60174          (630) 443-7755</p>	USER NAME = USER* PLOT SCALE = 1"=20' PLOT DATE = 8/28/2009	DESIGNED - SBP DRAWN - TC CHECKED - SBP DATE - January 2008	REVISED - REVISED - REVISED - REVISED -	<b>STATE OF ILLINOIS</b> <b>DEPARTMENT OF TRANSPORTATION</b>	<b>PLAN AND PROFILE</b> <b>STA. 306 + 50.00 TO STA. 310 + 75.00</b>	F.A. RTE. 0110 SECTION 01-00267-00-BR COUNTY KANE TOTAL SHEETS 37 SHEET NO. 10 CONTRACT NO. 83994	SCALE: 1"=20' SHEET NO. 10 OF 37 SHEETS STA. 306+50.00 TO STA. 310+75.00 FED. ROAD DIST. NO. ILLINOIS FED. AID PROJECT
---	---	--	--	---	--	--	---