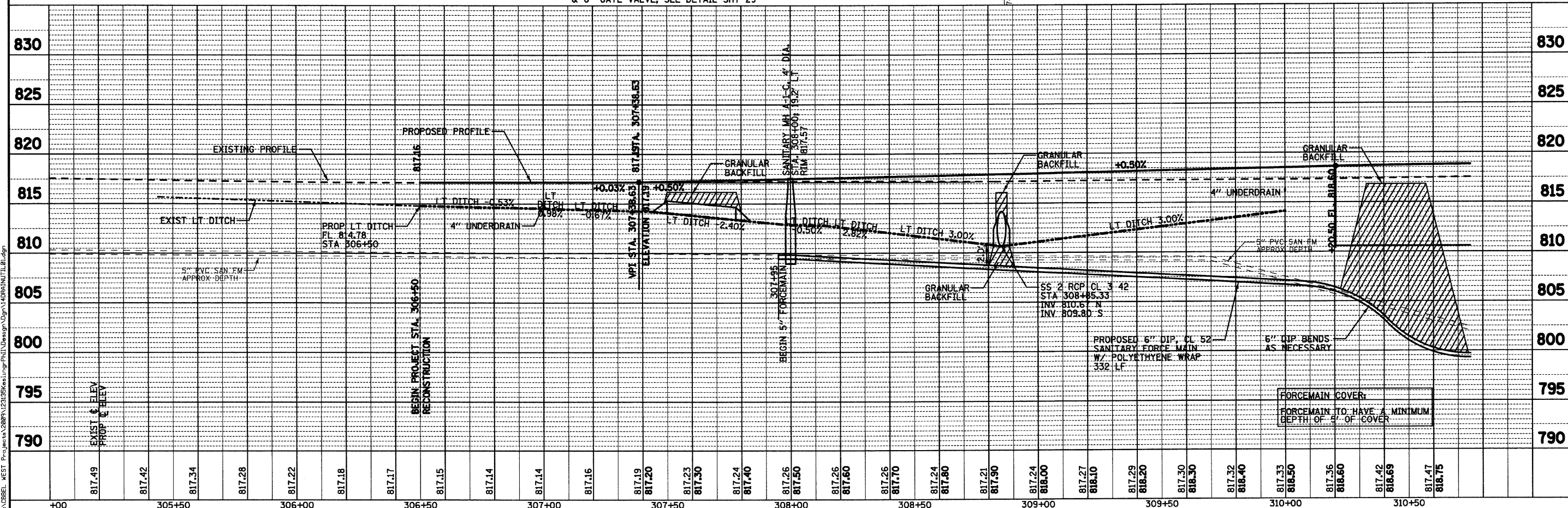
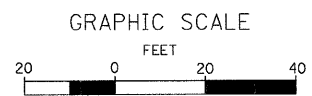
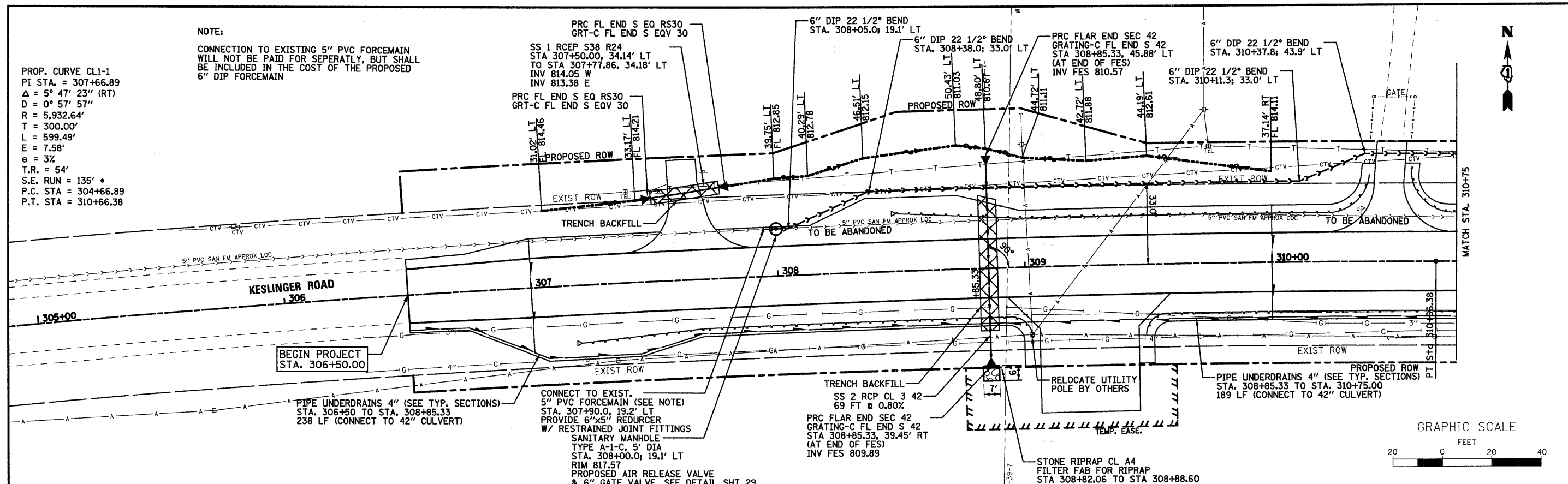


PROP. CURVE CL1-1
 PI STA. = 307+66.89
 $\Delta = 5^\circ 47' 23''$ (RT)
 $D = 0^\circ 57' 57''$
 $R = 5,932.64'$
 $T = 300.00'$
 $L = 599.49'$
 $E = 7.58'$
 $e = 3\%$
 $T.R. = 54'$
 $S.E. RUN = 135'$
 $P.C. STA = 304+66.89$
 $P.T. STA = 310+66.38$

NOTE:
 CONNECTION TO EXISTING 5" PVC FORCEMAIN
 WILL NOT BE PAID FOR SEPARATELY, BUT SHALL
 BE INCLUDED IN THE COST OF THE PROPOSED
 6" DIP FORCEMAIN



USER NAME = #USER# PLOT SCALE = 1"=20' PLOT DATE = 8/6/2009	DESIGNED - SBP DRAWN - TC CHECKED - SBP DATE - January 2008	REVISED - REVISED - REVISED - REVISED -	STATE OF ILLINOIS DEPARTMENT OF TRANSPORTATION	DRAINAGE AND UTILITIES STA. 306 + 50.00 TO STA. 310 + 75.00	F.A. RTE. 0110 SECTION 01-00267-00-BR COUNTY KANE TOTAL SHEETS 37 SHEET NO. 14 CONTRACT NO. 83994
---	--	--	---	--	--

PLAN	DATE
SURVEYED	BY
PLOTTED	BY
REVISIONS CHECKED	BY
NO.	DATE
NO.	DATE
NO.	DATE

PROFILE	DATE
SURVEYED	BY
PLOTTED	BY
REVISIONS CHECKED	BY
NO.	DATE
NO.	DATE
NO.	DATE

WILLIS BURKE KELSEY ASSOCIATES LTD.
 116 West Main Street, Suite 201
 St. Charles, Illinois 60174
 (630) 443-7756

FILE NAME = P:\CIBBEL WEST Projects\2809\230356\Keslinger\Plan\Design\Drawings\400\DRAINUTIL.dwg