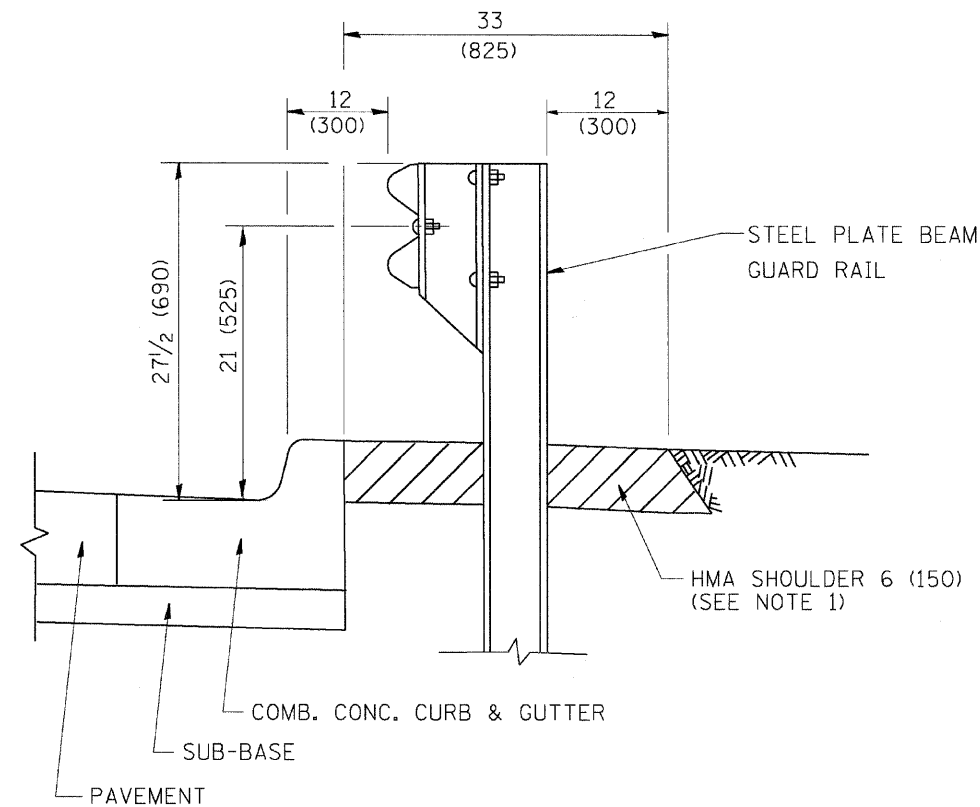


CONTRACT NO.				
F.A. RTE.	SECTION	COUNTY	TOTAL SHEETS	SHEET NO.
STA.	TO STA.			
FED. ROAD DIST. NO. 1	ILLINOIS	FED. AID PROJECT		



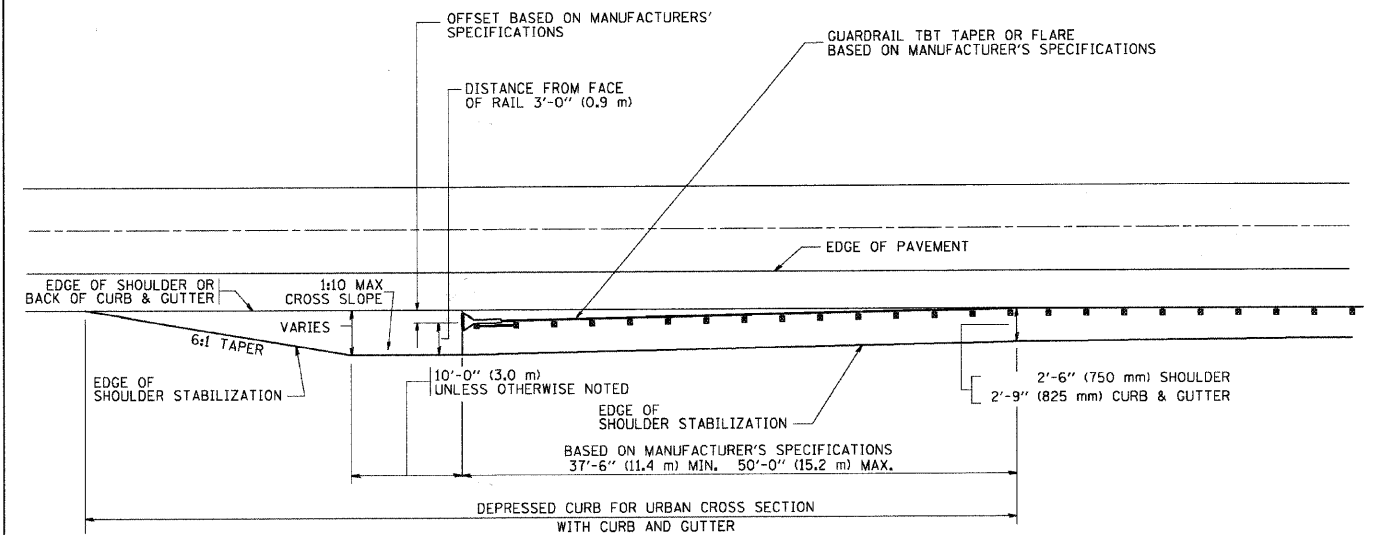
- NOTES: 1. THE HMA SHOULDER SHALL EXTEND UNDER THE TRAFFIC BARRIER TERMINAL
2. GUARD RAIL MAY BE PLACED AT THE BACK OF CURB WHEN DIRECTED BY THE ENGINEER.

BASIS OF PAYMENT: HMA SHOULDER 6 (150) WILL BE PAID FOR AT THE CONTRACT UNIT PRICE PER SQUARE YARD (SQUARE METER) FOR "HOT-MIX ASPHALT SHOULDER 6" (150 mm)".

STEEL PLATE BEAM GUARD RAIL AND TRAFFIC BARRIER TERMINAL, OF THE TYPE SPECIFIED WILL BE PAID FOR SEPARATELY.

**DETAILS FOR STEEL PLATE BEAM GUARD RAIL ADJACENT TO CURB AND GUTTER**  
 [FOR ROADWAY SPEED 35 MPH (60 kmh) TO 45 MPH (70 kmh)]

PLOT DATE = 7/30/2009  
 PLOT SCALE = 1/8" = 1'-0"  
 USER NAME = bward1



**STABILIZATION AT TBT TY. 1 SPL.**

TBT = TRAFFIC BARRIER TERMINAL  
 ALL DIMENSIONS ARE IN INCHES (MILLIMETERS) UNLESS OTHERWISE SHOWN.

REVISIONS		ILLINOIS DEPARTMENT OF TRANSPORTATION	
NAME	DATE		
M. DE YONG	09-22-90		
M. DE YONG	07-14-92		
R. SHAH	09/09/94		
R. SHAH	10/25/94		
R. SHAH	02/23/99		
A. ABBAS	03/21/97		
E. GOMEZ	08/28/00		
R. BORO	01/01/07		

SCALE: VERT. NONE  
 HORIZ. NONE

DRAWN BY Jls  
 CHECKED BY

BD600-10 (BD 34)

FILE NAME = P:\CBBEL\WEST\_Proj\2009\231355\Kest\Ingr\PH\Design\Drawn\266d54.dgn

**WILLS BURKE KELSEY ASSOCIATES LTD.**  
 116 West Main Street, Suite 201  
 St. Charles, Illinois 60174  
 (630) 443-7755

USER NAME = sUSER*	DESIGNED - SBP	REVISED - JAN-08
PLOT SCALE =	DRAWN - TC	REVISED - JAN-08
PLOT DATE = 7/30/2009	CHECKED -	REVISED -
	DATE - January 2008	REVISED -

**STATE OF ILLINOIS DEPARTMENT OF TRANSPORTATION**

**DETAILS FOR STEEL PLATE BEAM GUARD RAIL ADJUSTMENT TO CURB AND GUTTER**

SCALE: SHEET NO. 26 OF 37 SHEETS STA. TO STA.

F.A. RTE.	SECTION	COUNTY	TOTAL SHEETS	SHEET NO.
0110	01-00267-00-BR	KANE	37	26
CONTRACT NO. 83994				
FED. ROAD DIST. NO.	ILLINOIS	FED. AID PROJECT		