

ROUTE NO.	SECTION	COUNTY	TOTAL SHEETS	SHEET NO.
C.H. 3	07-00188	WHITESIDE	32	1
FAS 2192	-00-BR			
ILLINOIS			85465	

STATE OF ILLINOIS
DEPARTMENT OF TRANSPORTATION
DIVISION OF HIGHWAYS
PLANS FOR PROPOSED
HIGHWAY BRIDGE PROGRAM

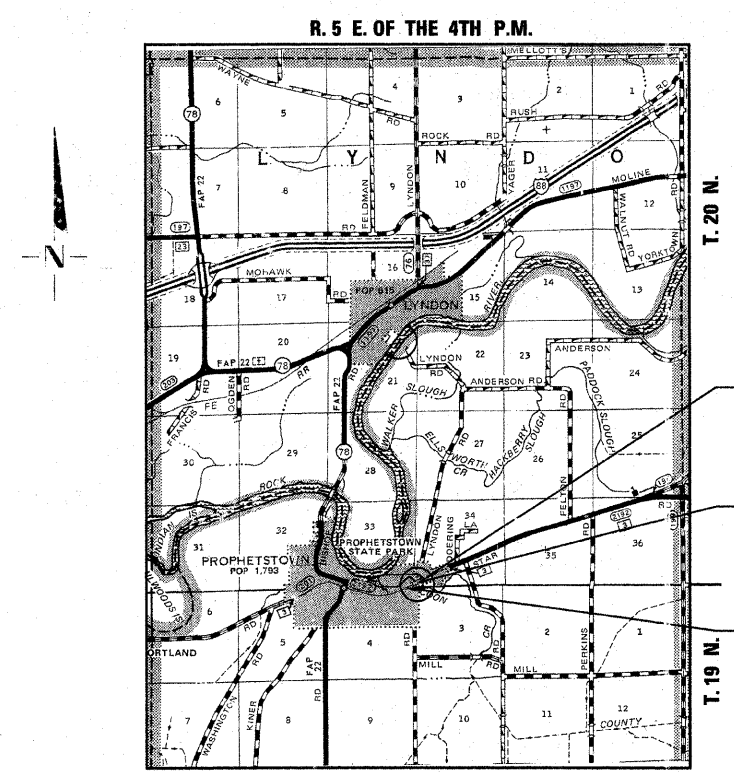
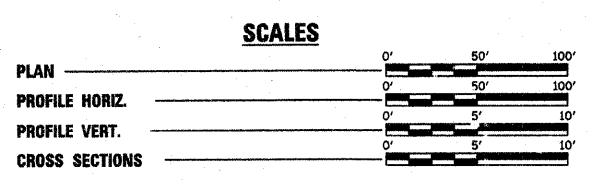
SECTION 07-00188-00-BR
WHITESIDE COUNTY
PROJECT NO. BRS-2192(104)
C.H. 3 (FAS 2192)
C-92-053-08
CONTRACT NO. 85465

INDEX OF SHEETS

SHEET NO.	TITLE
1.	COVER SHEET
2.	SUMMARY OF QUANTITIES, GENERAL NOTES & TYPICAL SECTIONS
3.	PLAN AND PROFILE SHEET (C.H. 3)
4.	PLAN AND PROFILE SHEET (LYNDON RD.)
5.	GUARDRAIL AND SHOULDER DETAILS
6.-27.	BRIDGE PLANS
28.-31.	STATION CROSS SECTIONS
32.	EROSION CONTROL PLAN

STANDARDS

280001-04	TEMPORARY EROSION CONTROL SYSTEMS
420401-07	BRIDGE APPROACH PAVEMENT CONNECTOR
515001-03	NAME PLATE FOR BRIDGES
601101-01	CONCRETE HEADWALL FOR PIPE DRAIN
630001-08	STEEL PLATE BEAM GUARDRAIL
630301-05	SHOULDER WIDENING FOR TYPE 1 (SPECIAL) GUARDRAIL TERMINALS
631032-04	TRAFFIC BARRIER TERMINAL, TYPE 6A
635006-03	REFLECTOR AND TERMINAL MARKER PLACEMENT
701006-03	OFF-ROAD OPERATIONS, 2L, 2W, 15' (4.5 M) TO 24" (600 MM) FROM PAVEMENT EDGE
701301-03	LANE CLOSURE, 2L, 2W, SHORT TIME OPERATIONS
701311-03	LANE CLOSURE, 2L, 2W, MOVING OPERATIONS - DAY ONLY
701901-01	TRAFFIC CONTROL DEVICES
720011-01	METAL POSTS FOR SIGNS, MARKERS AND DELINEATORS
728001-01	TELESCOPING STEEL SIGN SUPPORT
729001-01	APPLICATIONS OF TYPES A AND 3 METAL POSTS (FOR SIGNS AND MARKERS)
780001-02	TYPICAL PAVEMENT MARKINGS
BLR 21-8	TYPICAL APPLICATION OF TRAFFIC CONTROL DEVICES FOR CONSTRUCTION ON RURAL LOCAL HIGHWAYS

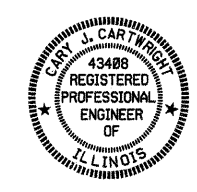


LOCATION PLAN
 GROSS LENGTH OF SECTION = 555.00 FEET = 0.105 MILES
 NET LENGTH OF SECTION = 555.00 FEET = 0.105 MILES
 SCALE IN MILES

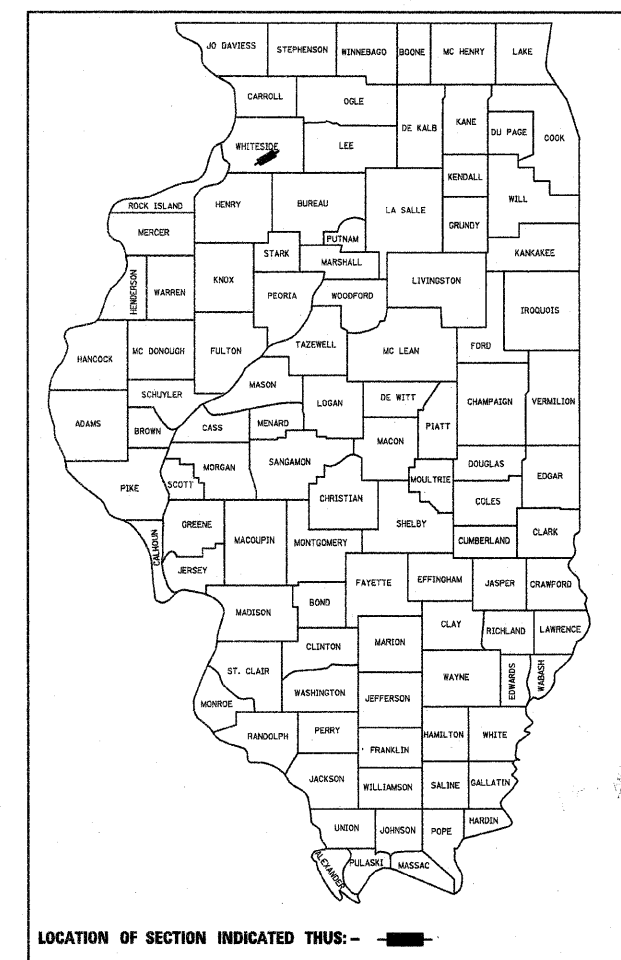
IMPROVEMENT ENDS
 STA. 50 + 55

STA. 48 + 02.50 - SPECIAL BRIDGE DESIGN
 STEEL WIDE FLANGE (COMPOSITE)
 BRIDGE, THREE SPANS AT 37'-0", 59'-0", 37'-0";
 36'-0" ROADWAY; 135'-6" BK.-BK., 0° SKEW
 EXISTING S.N. 098-0046
 PROPOSED S.N. 098-3076

IMPROVEMENT BEGINS
 STA. 45 + 00



Cary J. Cartwright
 ILLINOIS PROFESSIONAL NO. 36874
 EXPIRES 11-30-09



CLASSIFICATION: MAJOR COLLECTOR - RURAL
DESIGN VOLUME: 1000-3000 ADT
CURRENT ADT: 2750 (2008)
DESIGN SPEED: 55 MPH

TOLL FREE JOINT UTILITY LOCATING
 INFORMATION FOR EXCAVATORS (J.U.L.I.E.)
 TELEPHONE NUMBER 1-800-892-0123

APPROVED	8-27	2009
	<i>Steve J. Haring</i>	COUNTY ENGINEER
PASSED		20
	<i>[Signature]</i>	DISTRICT TWO ENGINEER OF LOCAL ROADS & STREETS
RELEASED FOR BID		20
BASED ON LIMITED		20
REVIEW	<i>[Signature]</i>	DEPUTY DIRECTOR OF HIGHWAYS, REGION TWO ENGINEER
STATE OF ILLINOIS DEPARTMENT OF TRANSPORTATION		

CONTRACT NO. 85465

4440 ASH GROVE
 SPRINGFIELD, IL 62711
 (217) 793-9600
 www.fehr-graham.com

FEHR-GRAHAM & ASSOCIATES, LLC
 ENGINEERING AND SCIENCE CONSULTANTS
 PEORIA, IL ROCKFORD, IL ROCKFORD, IL MORRIS, IL SPRINGFIELD, IL