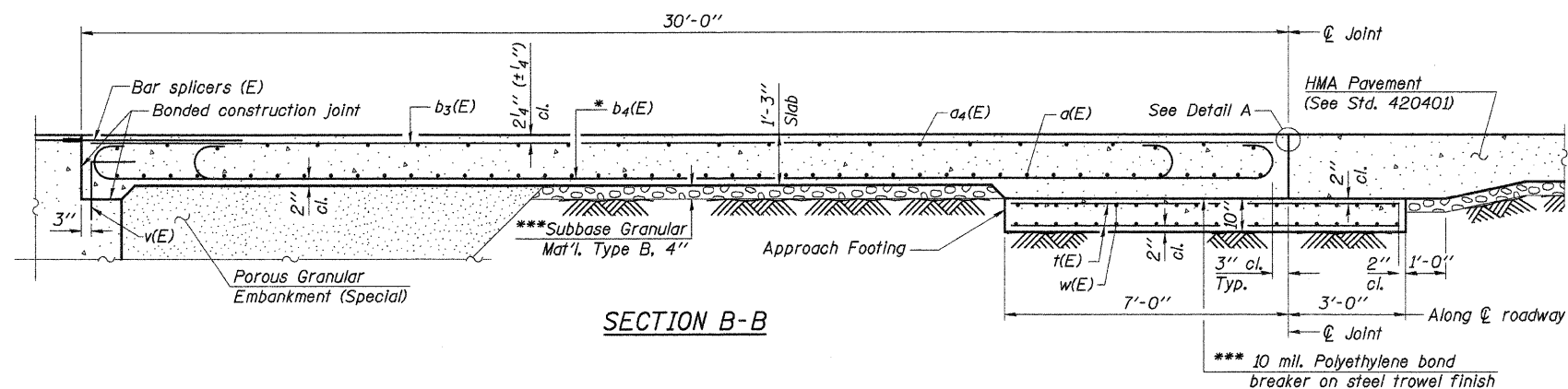
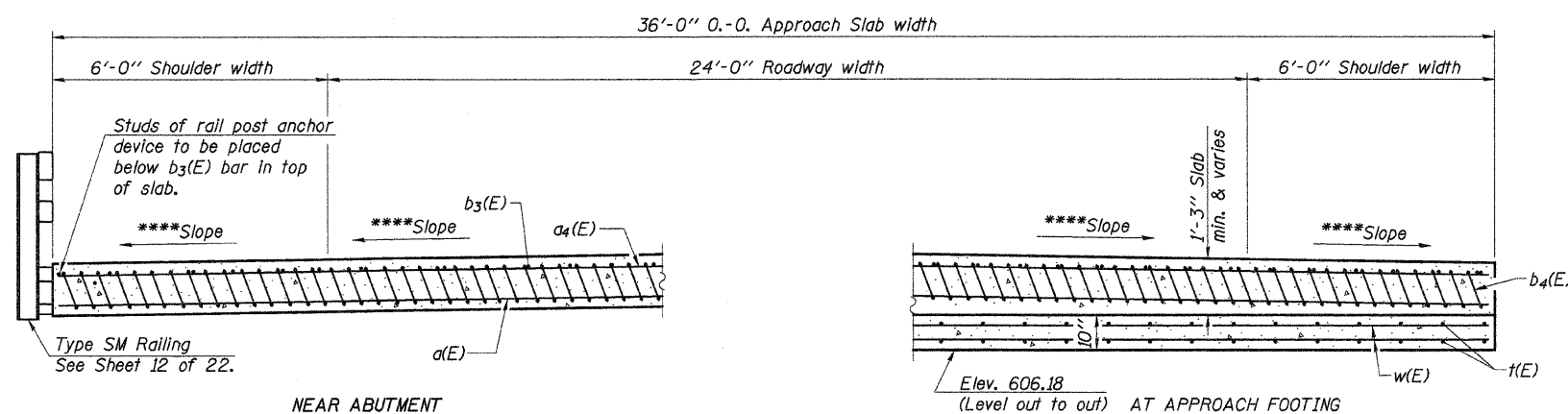


ROUTE NO.	SECTION	COUNTY	TOTAL SHEETS	SHEET NO.
C.H. 3	07-00188-00-BR	WHITESIDE	32	16
ILLINOIS				

Sheet 11 of 22 Contract No. 85465



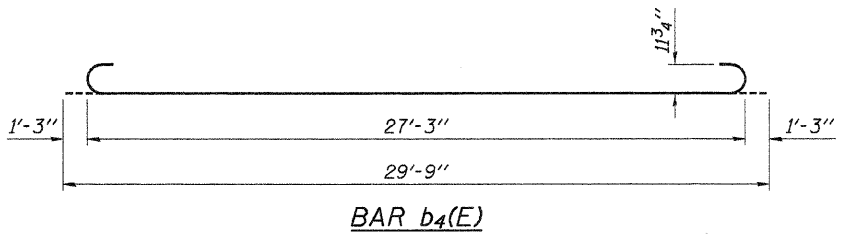
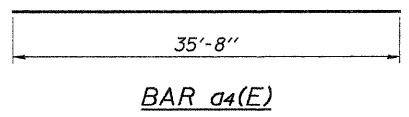
Notes:
 See sheet 10 of 22 for Detail A.
 Approach slab shall be paid for as Concrete Superstructure.
 Approach footing concrete shall be paid for as Concrete Structures.
 Reinforcement shall be paid for as Reinforcement Bars, Epoxy Coated.
 For v(E) bar details, see sheet 9 of 22.
 The approach footing maximum applied service bearing pressure (Qmax) = 2.0 ksf.
 For bar splicer details, see sheet 20 of 22.
 Cost of excavation for approach footing included with Concrete Structures.
 For Porous Granular Embankment (Special) and drainage treatment details, see sheet 2 of 22.



* Tilt #9 b4(E) bars as required to maintain clearance.
 *** Cost included with Concrete Superstructure.
 **** 3/16"/Ft. & Varies. See Sheets 6 & 7 of 22 for Approach Slab Elevations

**TWO APPROACHES
 BILL OF MATERIAL**

Bar	No.	Size	Length	Shape
a(E)	92	#5	35'-8"	—
a4(E)	50	#4	35'-8"	—
b3(E)	58	#4	29'-8"	—
b4(E)	172	#9	29'-9"	⌋
t(E)	144	#4	9'-8"	—
w(E)	80	#5	35'-8"	—
Concrete Superstructure		Cu. Yd.	104.4	
Concrete Structures		Cu. Yd.	22.2	
Reinforcement Bars, Epoxy Coated		Pound	27,070	
Protective Coat		Sq. Yd.	240	
Bridge Deck Grooving		Sq. Yd.	227	



DESIGNED -	A.R.K.
CHECKED -	A.L.S.
DRAWN -	S.A.P.
CHECKED -	A.R.K. & A.L.S.

BA-0 10-31-08

BRIDGE APPROACH SLAB DETAILS
 SECTION 07-00188-00-BR
 COUNTY HIGHWAY 3
 WHITESIDE COUNTY
 STA. 48+02.50

4440 ASH GROVE SPRINGFIELD, IL 62711 (217) 793-8800 www.fehr-graham.com	FEHR-GRAHAM & ASSOCIATES, LLC ENGINEERING AND SCIENCE CONSULTANTS <small>FREEDPORT, IL ROCOFORD, IL ROCKFORD, IL MONROE, WI SPRINGFIELD, IL</small>	JOB NO.: 47515 FILE: APRCH-DTL.DGN DATE: 08/17/09
--	--	---