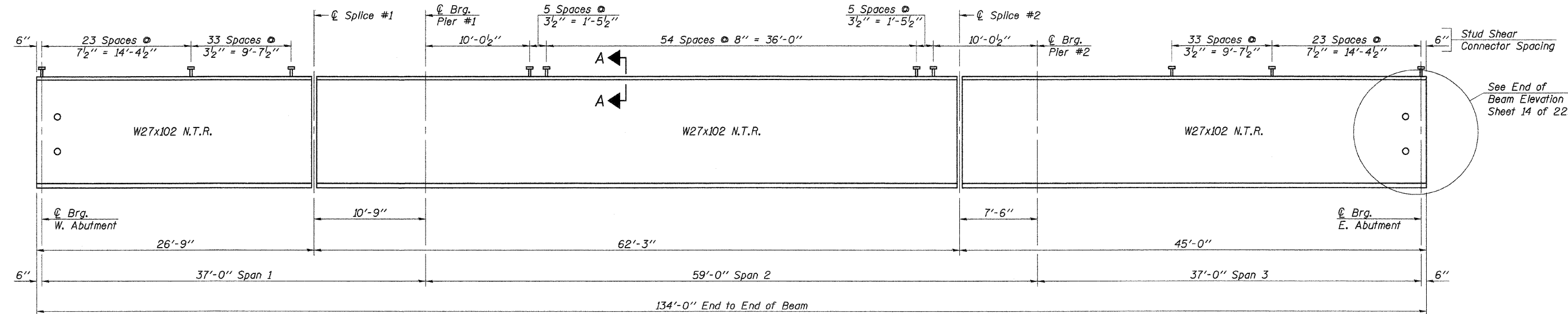


FRAMING PLAN



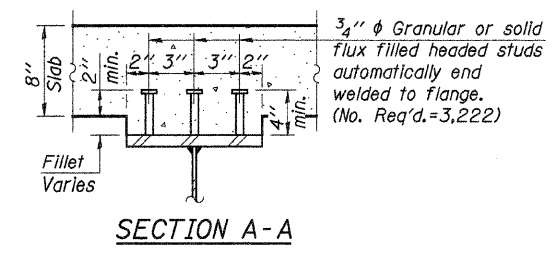
ELEVATION

Note: N.T.R. Indicates that Notch Toughness Requirements are applicable.

TOP OF BEAM ELEVATIONS
(For Fabrication Only)

DESIGNED -	A.L.S.
CHECKED -	A.R.K.
DRAWN -	S.A.P.
CHECKED -	A.R.K.

	Beam 1	Beam 2	Beam 3	Beam 4	Beam 5	Beam 6
☉ Brg. W. Abut.	607.58	607.68	607.78	607.78	607.68	607.58
☉ Splice #1	607.51	607.61	607.71	607.71	607.61	607.51
☉ Brg. Pier #1	607.51	607.61	607.71	607.71	607.61	607.51
☉ Splice #2	607.53	607.63	607.73	607.73	607.63	607.53
☉ Brg. Pier #2	607.57	607.66	607.75	607.74	607.64	607.54
☉ Brg. E. Abut.	607.77	607.79	607.82	607.78	607.68	607.58



SECTION A-A

Note: See Sheet 14 of 22 for Splice Details.

Load carrying components designated "N.T.R." shall conform to the Supplemental Requirements for Notch Toughness, Zone 2.

All diaphragms shall be installed as steel is erected and secured with erection pins and bolts except as otherwise noted. Individual diaphragms at supports may be temporarily disconnected to install bearing anchor rods.

Work this Sheet with Sheets 14 & 15 of 22.

STRUCTURAL STEEL
SECTION 07-00188-00-BR
COUNTY HIGHWAY 3
WHITESIDE COUNTY
STA. 48+02.50

4440 ASH GROVE SPRINGFIELD, IL 62711 (217) 793-8600 www.fehr-graham.com	FEHR-GRAHAM & ASSOCIATES, LLC ENGINEERING AND SCIENCE CONSULTANTS P.O. BOX 1000, SPRINGFIELD, IL 62703	JOB NO.: 47515 FILE: STEEL.DGN DATE: 08/17/09
--	--	---