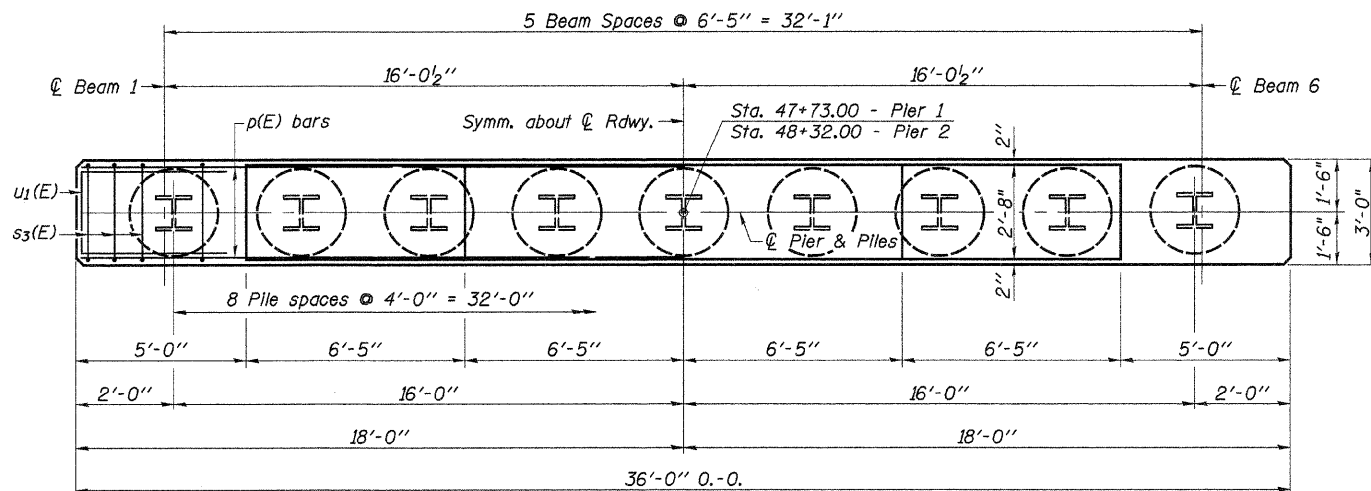
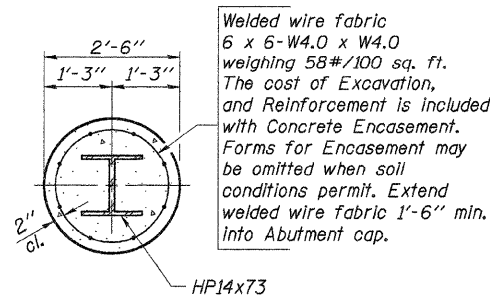


ROUTE NO.	SECTION	COUNTY	TOTAL SHEETS	SHEET NO.
C.H. 3	07-00188-00-BR	WHITESIDE	32	23
ILLINOIS				

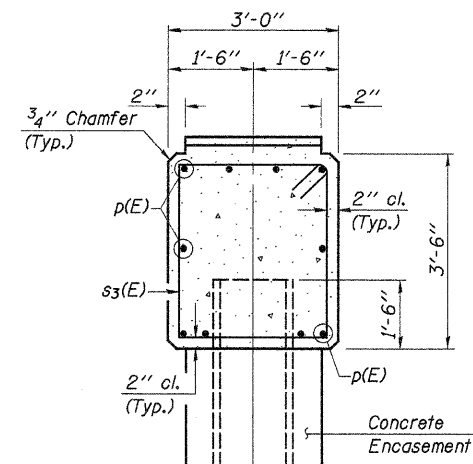
Sheet 18 of 22 Contract No. 85465



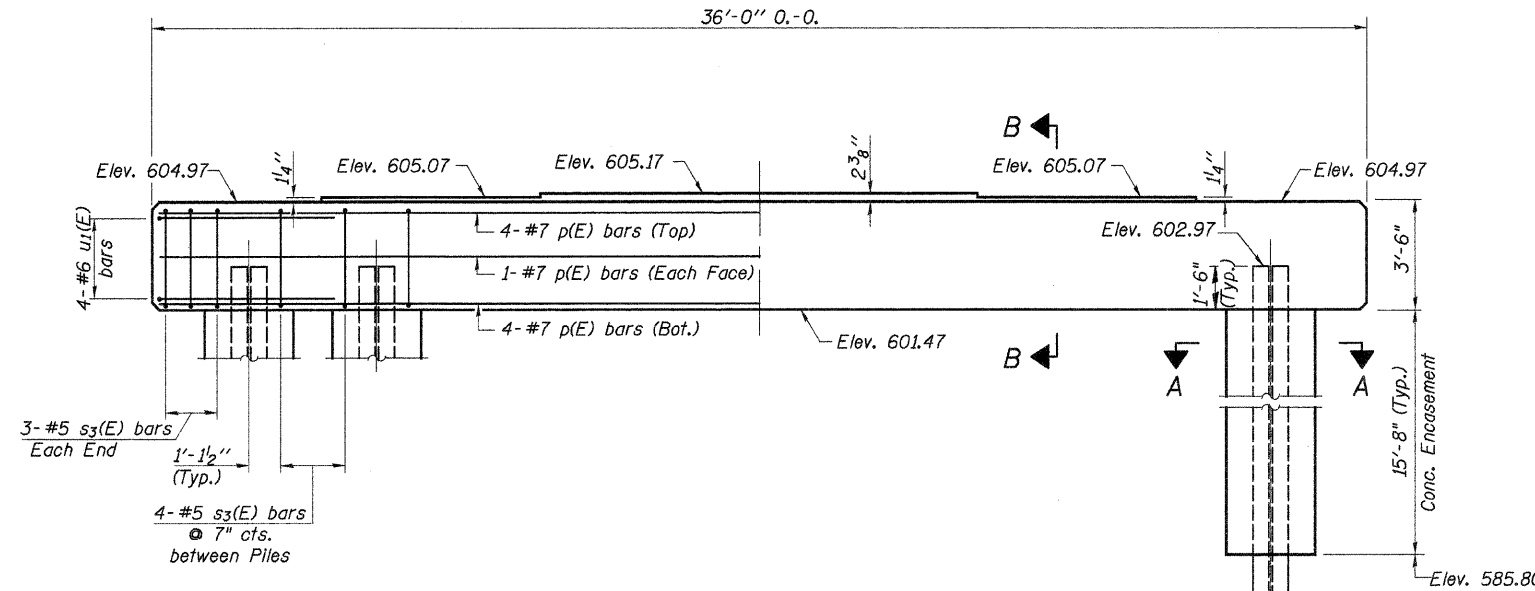
PLAN



SECTION A-A
PILE ENCASEMENT DETAIL



SECTION B-B



ELEVATION
(Looking East)

PILE DATA

Type & Size	Steel HP14x73
No. Req'd	*18
Nominal Required Bearing	290 kips
Allowable Resistance Available	139 kips
Estimated Length	.87 ft.

*Includes 1 Test Pile to be driven in a permanent location at pier 2.

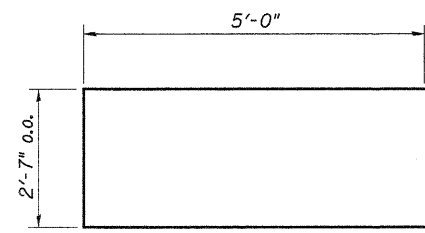
The test piles shall be driven to 110 percent of the Nominal Required Bearing Indicated above.

The steel H-pile shall be according to AASHTO M270, Grade 50.

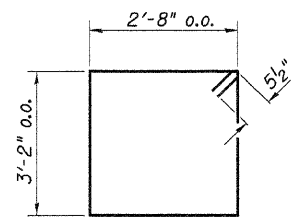
BILL OF MATERIAL - 2 PIERS

BAR	NO.	SIZE	LENGTH	SHAPE
p(E)	20	#7	35'-8"	—
s3(E)	76	#5	12'-7"	□
u1(E)	16	#6	12'-7"	▭
Concrete Structures			Cu. Yd.	28.8
Reinforcement Bars, Epoxy Coated			Pound	2,760
Driving Piles			Foot	1,479
Furnishing Steel Pile HP14x73			Foot	1,479
Test Piles, HP14x73			Each	1
Concrete Encasement			Cu. Yd.	51.3

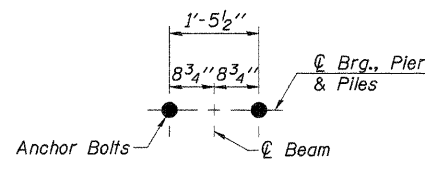
See Sheet 19 of 22 for Pile Details.



BAR u1(E)



BAR s3(E)



ANCHOR BOLT LAYOUT

DESIGNED -	J.A.M.
CHECKED -	A.L.S.
DRAWN -	S.A.P.
CHECKED -	J.A.M.

PIERS
SECTION 07-00188-00-BR
COUNTY HIGHWAY 3
WHITESIDE COUNTY
STA. 48+02.50