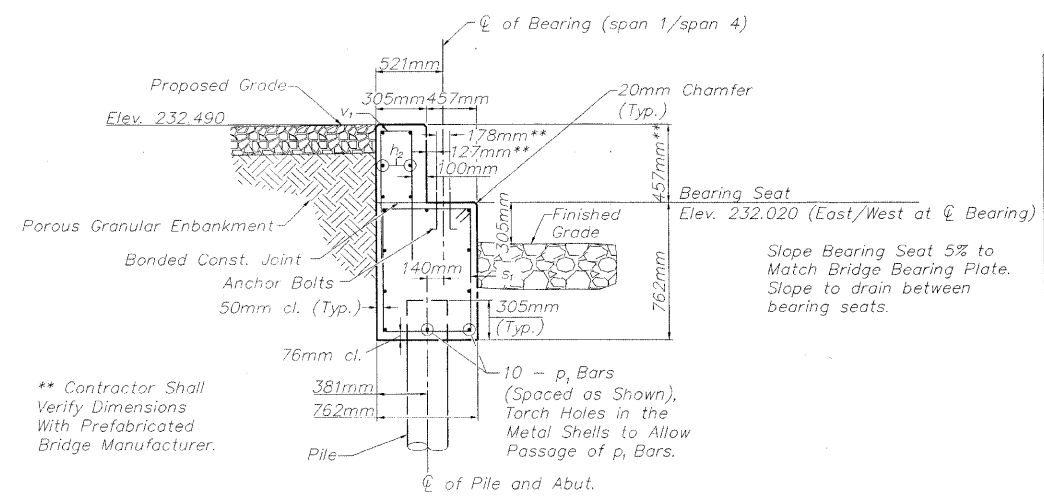


ABUTMENT PLAN VIEW NOT TO SCALE



SECTION D-D NOT TO SCALE

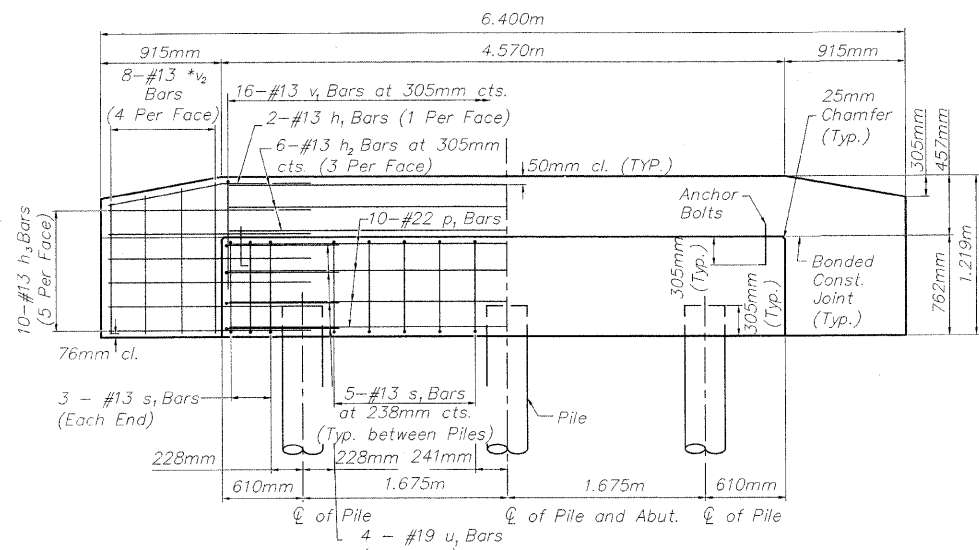
LOG OF BORING NO. 3									
CLIENT		PROJECT							
McClure Engineering Associates		Pecatonica Prairie Path Bridges							
SITE		BRIDGE NO. 99 FORMER BURGESS SITE							
DESCRIPTION		APPROX. SURFACE ELEV.: 781 ft (238 m)							
1	1	1	1	1	1	1	1	1	1
2	2	2	2	2	2	2	2	2	2
3	3	3	3	3	3	3	3	3	3
4	4	4	4	4	4	4	4	4	4
5	5	5	5	5	5	5	5	5	5
6	6	6	6	6	6	6	6	6	6
7	7	7	7	7	7	7	7	7	7
8	8	8	8	8	8	8	8	8	8
9	9	9	9	9	9	9	9	9	9
10	10	10	10	10	10	10	10	10	10
11	11	11	11	11	11	11	11	11	11
12	12	12	12	12	12	12	12	12	12

Boring Logs in Feet

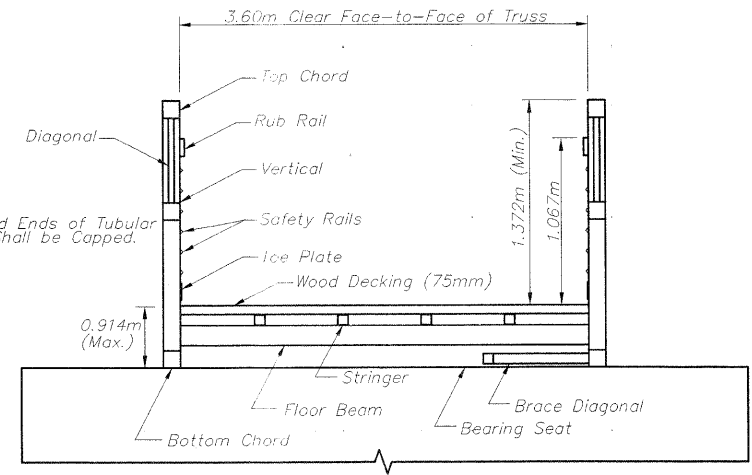
LOG OF BORING NO. 4									
CLIENT		PROJECT							
McClure Engineering Associates		Pecatonica Prairie Path Bridges							
SITE		BRIDGE NO. 99 FORMER BURGESS SITE							
DESCRIPTION		APPROX. SURFACE ELEV.: 781 ft (238 m)							
1	1	1	1	1	1	1	1	1	1
2	2	2	2	2	2	2	2	2	2
3	3	3	3	3	3	3	3	3	3
4	4	4	4	4	4	4	4	4	4
5	5	5	5	5	5	5	5	5	5
6	6	6	6	6	6	6	6	6	6
7	7	7	7	7	7	7	7	7	7
8	8	8	8	8	8	8	8	8	8
9	9	9	9	9	9	9	9	9	9
10	10	10	10	10	10	10	10	10	10
11	11	11	11	11	11	11	11	11	11
12	12	12	12	12	12	12	12	12	12

DIMENSIONS AND ELEVATIONS MAY VARY WITH PREFABRICATED BRIDGE MANUFACTURER. DETERMINE ACTUAL BACK WALL HEIGHT AND BRIDGE SEAT ELEVATION IN ACCORDANCE WITH SHOP DRAWINGS SUPPLIED FOR THIS PROJECT.

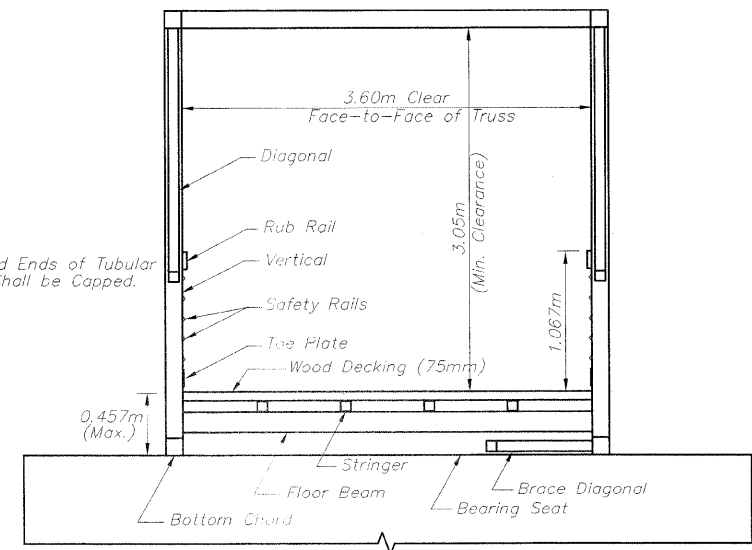
NEW ABUTMENT DETAILS OVER THE PECATONICA RIVER SECTION 09-P4000-00-BT STEPHENSON COUNTY STATION 8+153.506



SECTION C-C NOT TO SCALE



SECTION A-A NOT TO SCALE

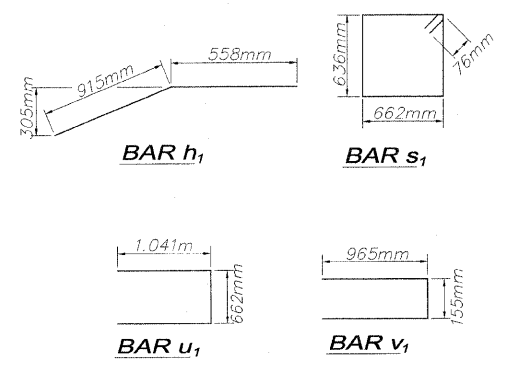


SECTION B-B NOT TO SCALE

BILL OF MATERIALS FOR BOTH ABUTMENTS

Bar	No.	Size	Length	Shape
h ₁	8	#13	1.473m	—
h ₂	12	#13	4.470m	—
h ₃	40	#13	1.423m	—
p ₁	20	#22	4.470m	—
s ₁	32	#13	2.748m	□
u ₁	16	#19	2.744m	□
v ₁	32	#13	2.085m	□
*v ₂	32	#13	1.093m	—
Reinforcement Bars	KG		690	
Concrete Structures	CM		7.6	
Anchor Bolts, M24	Each		8	

*Cut v₂ Bars to Fit Top of Wall Taper



REVISIONS		
NO.	ITEM	DATE

PLOTTING SCALE: 1 : 100 DRAWN BY: PLH/CDS CHECKED BY: DATE: JUNE, 2009

McClure Engineering Associates, Inc.
 7282 Argus Drive Rockford, Illinois 61107-5837
 (815) 395-2332 FAX (815) 398-2496
 Design Firm License: Illinois 184-000816
 Copyright 2009 By McClure Engineering Associates, Inc.

BRIDGE NO. 99 STA. 8+153.506
PECATONICA PRAIRIE PATH
 STEPHENSON COUNTY SECTION 09-P4000-00-BT
 JOB NUMBER: 04-28-98-037