

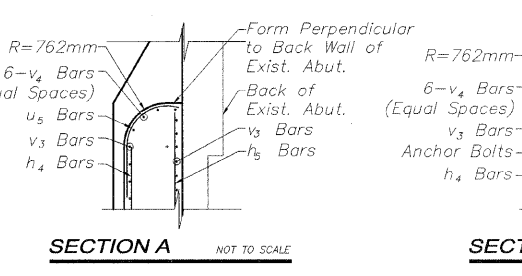
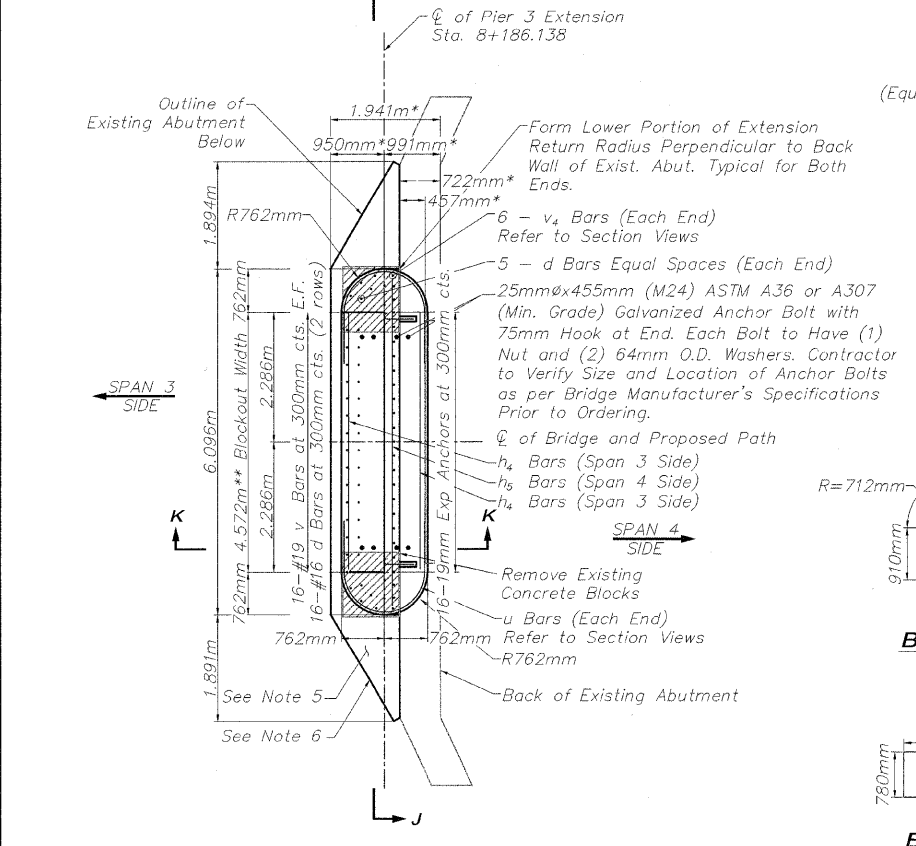
BRIDGE 99 NOTES

- REFER TO "BRIDGE GENERAL NOTES" SHEET FOR ADDITIONAL PREFABRICATED STEEL BRIDGE GENERAL NOTES.
- ALL TREE REMOVAL AND SELECTIVE BRUSH CLEARING SHALL BE IN ACCORDANCE WITH THE PLANS AND SPECIAL PROVISIONS OR AS DIRECTED BY THE ENGINEER. TREE REMOVAL AND SELECTIVE CLEARING WILL BE MEASURED AND PAID FOR AT THE CONTRACT UNIT PRICE FOR THE APPROPRIATE ITEM.
- CONTRACTOR SHALL PROVIDE NAME PLATE CONSTRUCTION DETAILS WITH THE SHOP DRAWINGS SUBMITTAL. NAME PLATES SHALL BE OF SIMILAR MATERIAL AND ATTACHED TO THE TRUSS SUPERSTRUCTURE ON THE RIGHT HAND SIDE OF APPROACH END WHILE LOOKING IN THE DIRECTION OF INCREASING STATIONING REFER TO NAME PLATE DETAIL FOR APPROXIMATE SIZE AND MINIMUM BRIDGE DATA REQUIRED.
- EXISTING CONCRETE BLOCKS SHALL BE REMOVED AND DISPOSED IN ACCORDANCE WITH THE STANDARD SPECIFICATIONS. THIS WORK SHALL BE MEASURED AND PAID FOR AT THE CONTRACT UNIT PRICE PER SQUARE METER FOR CONCRETE REMOVAL.
- THE TOP PORTION OF THE EXISTING PIER/ABUTMENT CAPS SHALL BE REMOVED TO A MINIMUM DEPTH OF 150MM OR TO SOUND CONCRETE AND REPLACED AS SHOWN. THIS WORK SHALL BE IN ACCORDANCE WITH IDOT GSP 53 "STRUCTURAL REPAIR OF CONCRETE" EXCEPT THAT THE NEW CONCRETE SHALL BE ANCHORED TO THE EXISTING CONCRETE WITH 12.7MM DIA. HOOK BOLTS SPACED AT 610MM MAX. CENTERS AND ONE LAYER OF NO. 13 REINFORCEMENT BARS AT 300MM CENTERS EACH WAY SHALL BE PLACED A MINIMUM OF 50MM CLEAR DISTANCE TO THE PROPOSED SURFACE. ALL MATERIAL AND LABOR REQUIRED TO COMPLETE THIS WORK WILL BE PAID FOR AT THE CONTRACT UNIT PRICE PER SQUARE METER FOR STRUCTURAL REPAIR OF CONCRETE (DEPTH GREATER THAN 125MM). REFER TO SPECIAL PROVISIONS FOR FURTHER DETAILS.
- THE VERTICAL SURFACES OF THE EXISTING PIER/ABUTMENT WITH AREAS OF CRACKED, LOOSE, SPALLED AND/OR DETERIORATED CONCRETE SHALL BE REMOVED TO A MINIMUM DEPTH OF 100MM OR TO SOUND CONCRETE AND REPLACED WITH FORMED CONCRETE REPAIR ARE AS SHOWN HOWEVER, THIS LIMIT SHOULD NOT BE CONSIDERED AS A MINIMUM REMOVAL LIMIT. THE EXACT LIMITS WILL BE DETERMINED IN THE FIELD BY THE ENGINEER WITH THE CONTRACTOR AND SOME OF THE AREA WITHIN THE LIMITS SHOWN MAY NOT REQUIRE REMOVAL WHILE SOME AREAS BEYOND THE LIMITS SHOWN MAY BE ADDED. THIS WORK SHALL BE IN ACCORDANCE WITH IDOT GSP 53 "STRUCTURAL REPAIR OF CONCRETE" EXCEPT THAT THE NEW CONCRETE SHALL BE ANCHORED TO THE EXISTING CONCRETE WITH 12.7MM DIA. HOOK BOLTS SPACED AT 610MM MAX. CENTERS AND ONE LAYER OF NO. 13 REINFORCEMENT BARS AT 300MM CENTERS EACH WAY SHALL BE PLACED A MINIMUM OF 50MM CLEAR DISTANCE TO THE PROPOSED SURFACE. ALL MATERIAL AND LABOR REQUIRED TO COMPLETE THIS WORK WILL BE PAID FOR AT THE CONTRACT UNIT PRICE PER SQUARE METER FOR STRUCTURAL REPAIR OF CONCRETE (DEPTH EQUAL TO OR LESS THAN 125MM). REFER TO SPECIAL PROVISIONS FOR FURTHER DETAILS.
- THE BRIDGE SEATS BETWEEN THE BEARING LOCATIONS SHALL BE SLOPED TO PROVIDE POSITIVE DRAINAGE. CONTRACTOR SHALL COORDINATE THE PLAN BEARING ELEVATIONS WITH THE PREFABRICATED BRIDGE BEARINGS AND PROVIDE BEARING PADS OF THE APPROPRIATE THICKNESS, SIZE AND SLOPE AS REQUIRED PER SPAN BY THE PREFABRICATED BRIDGE MANUFACTURER. THIS WORK WILL NOT BE PAID FOR SEPARATELY AND SHALL BE INCLUDED WITH THE CONTRACT UNIT COST FOR CONCRETE STRUCTURES.
- STRUCTURE EXCAVATION FOR PROPOSED ABUTMENTS AND ADJACENT TO THE EXISTING SUBSTRUCTURE WTS SHALL BE IN ACCORDANCE WITH SECTION 502 OF THE IDOT STANDARD SPECIFICATIONS AND WILL NOT BE PAID FOR AS A SEPARATE ITEM. ALL DEBRIS AND EXCESS EXCAVATION SHALL BE REMOVED AND PROPERLY DISPOSED OF ACCORDING TO ARTICLE 202.03 OF THE IDOT STANDARD.

SECTION K-K
NOT TO SCALE

SECTION J-J
NOT TO SCALE

*CONTRACTOR SHALL FIELD VERIFY DIMENSIONS.
**CONTRACTOR SHALL VERIFY DIMENSIONS WITH PREFABRICATED BRIDGE MANUFACTURER.

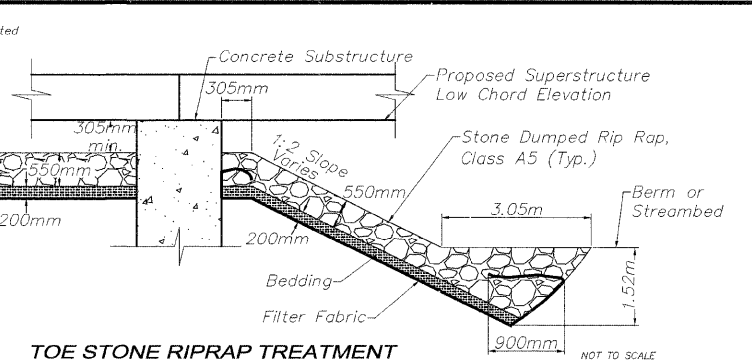
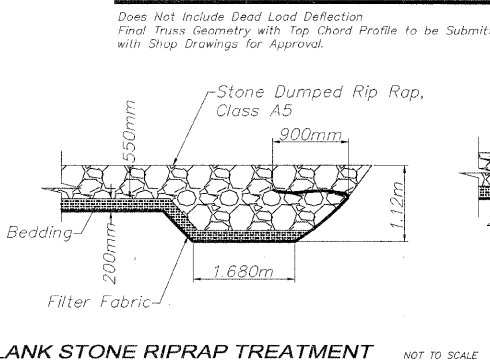
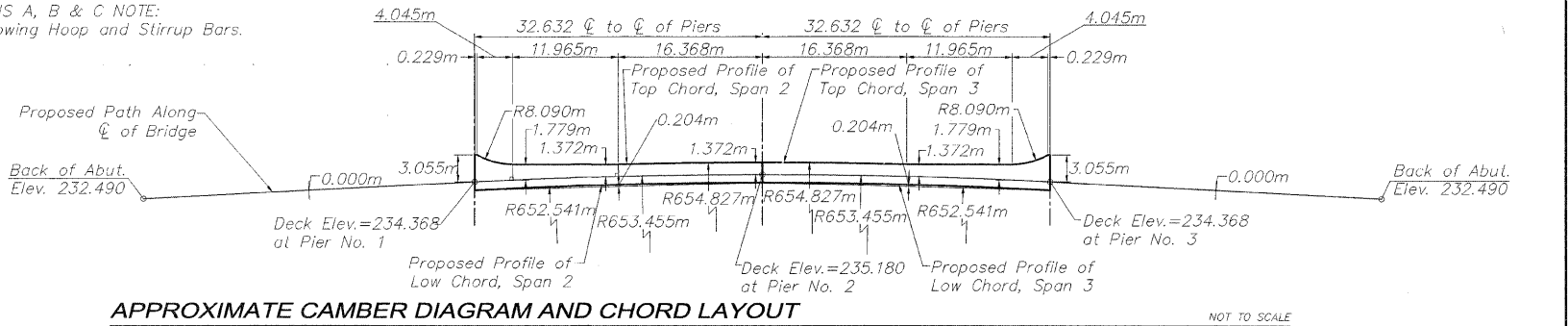
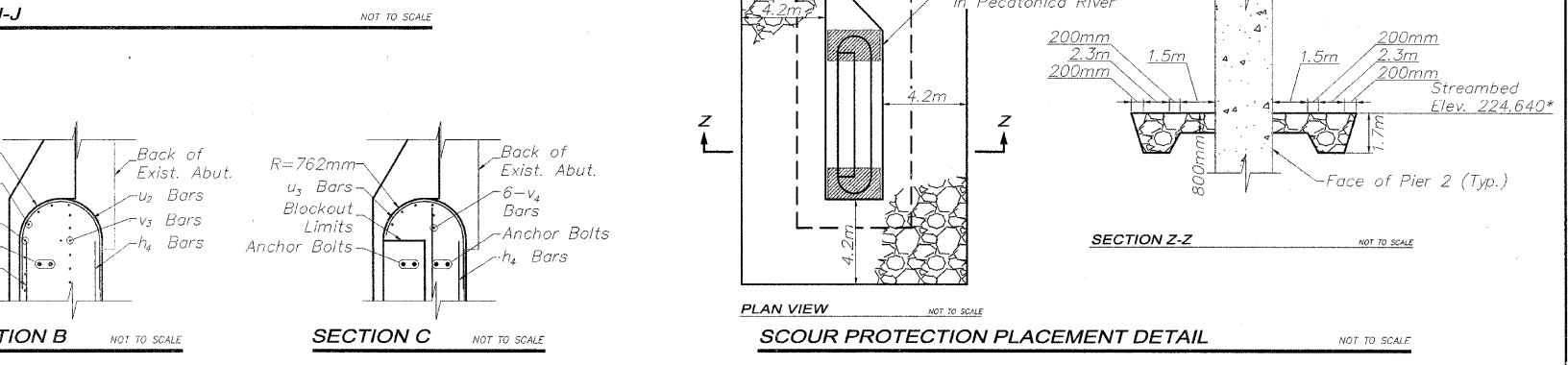


SECTIONS A, B & C NOTE:
Not Showing Hoop and Stirrup Bars.

BILL OF MATERIALS FOR PIER 3 EXTENSION

Bar	No.	Size	Length	Shape
d	42	#16	0.890m	□
h ₄	29	#19	4.570m	—
h ₅	13	#19	5.900m	—
s ₂	16	#16	2.750m	□
s ₅	16	#16	4.080m	□
u ₂	10	#19	4.055m	□
u ₃	6	#19	3.070m	□
u ₅	24	#19	2.251m	□
***v ₃	32	#19	2.930m	—
***v ₄	12	#19	3.350m	—
Reinforcement Bars	KG	1250		
Concrete Structures	CM	25.9		
Drill and Grout Bars	Each	42		
Anchor Bolts, M24	Each	8		
Expansion Anchors, 19mm	Each	16		
Structural Repair of Concrete (Depth greater than 125mm)	SM	10.7		
Structural Repair of Concrete (Depth Equal to or Less Than 125mm)	SM	7.4		
Porous Granular Embankment	CM	72.25		
Concrete Removal Sp.	SM	16.6		

*** Trim Bars if Required to Fit.



**DIMENSIONS AND ELEVATIONS MAY VARY WITH PREFABRICATED BRIDGE MANUFACTURER. DETERMINE ACTUAL BACK WALL HEIGHT AND BRIDGE SEAT ELEVATION IN ACCORDANCE WITH SHOP DRAWINGS SUPPLIED FOR THIS PROJECT.

EXTENSION OF EXISTING ABUTMENT OVER THE PECATONICA RIVER
SECTION 09-P4000-00-BT
STEPHENSON COUNTY
STATION 8+153.506

FILE NAME: G:\98-037 PECPATH\Stephenson\DESIGN\DRAWINGS\#06-08 b099NEW.dwg

REVISIONS		
NO.	ITEM	DATE

PLOTTING SCALE:	1 : 100
DRAWN BY:	PLH/CDS
CHECKED BY:	
DATE:	JUNE, 2009

McClure
Engineering Associates, Inc.
7282 Argus Drive
Rookford, Illinois 61107-5837
(815) 398-2932 FAX (815) 398-2496
Design Firm License: Illinois 184-000816
Copyright 2009 By McClure Engineering Associates, Inc.

BRIDGE NO. 99 STA. 8+153.506
PECATONICA PRAIRIE PATH
STEPHENSON COUNTY
SECTION 09-P4000-00-BT
JOB NUMBER: 04-28-98-037