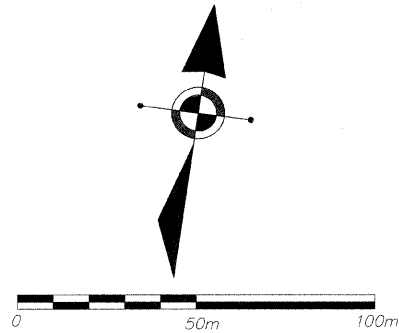
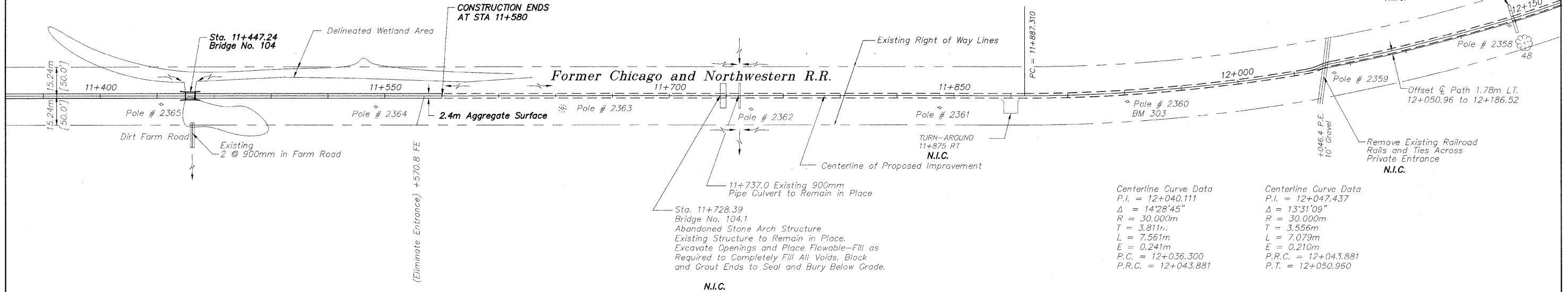


BM 303 RR Spike in Power Pole No. 2360  
Sta. 11+948.512 4.038m RT.  
Elev. 234.372

Centerline Curve  
Data P.I. = 12+038.414  
 $\Delta = 19'46''03''$   
 $R = 867.238m$   
 $T = 151.104m$   
 $L = 299.205m$   
 $E = 13.066m$   
P.C. = 11+887.310  
P.T. = 12+186.515



Former Structo Plant

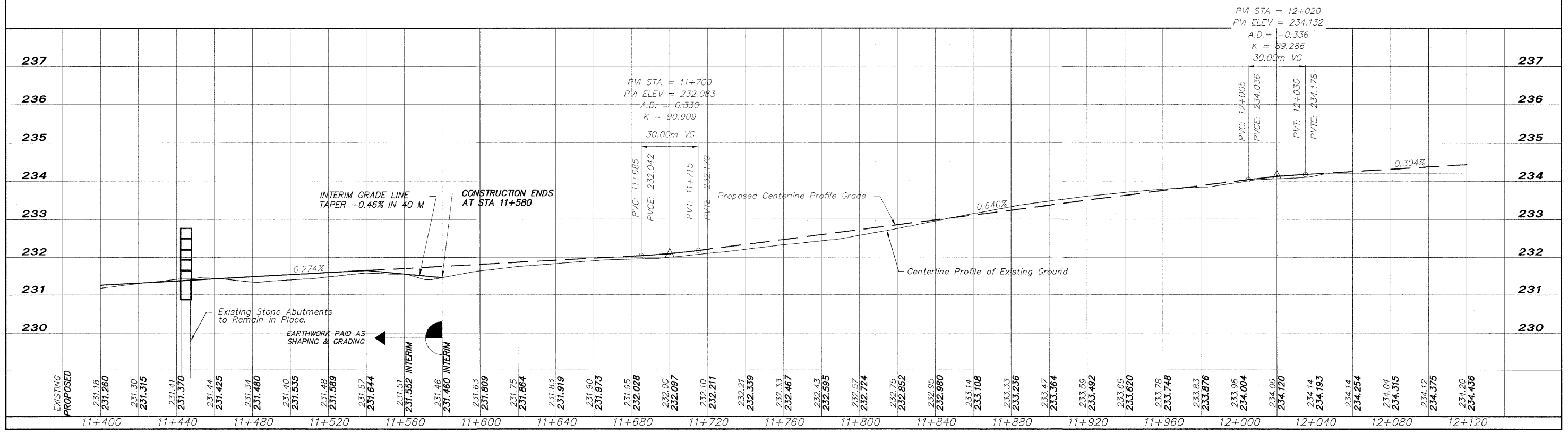


Centerline Curve Data  
P.I. = 12+040.111  
 $\Delta = 14'28''45''$   
 $R = 30.000m$   
 $T = 3.811m$   
 $L = 7.561m$   
 $E = 0.241m$   
P.C. = 12+036.300  
P.R.C. = 12+043.881

Centerline Curve Data  
P.I. = 12+047.437  
 $\Delta = 13'31''09''$   
 $R = 30.000m$   
 $T = 3.556m$   
 $L = 7.079m$   
 $E = 0.210m$   
P.R.C. = 12+043.881  
P.T. = 12+050.960

N.I.C.

Sta. 11+728.39  
Bridge No. 104.1  
Abandoned Stone Arch Structure  
Existing Structure to Remain in Place.  
Excavate Openings and Place Flowable-Fill as  
Required to Completely Fill All Voids. Block  
and Grout Ends to Seal and Bury Below Grade.



FILE NAME: G:\98-037 PECPATH\Stephenson\DESIGN\DRAWINGS\#12 BRIDGE 104.dwg

REVISIONS		
NO.	ITEM	DATE

PLOTTING SCALE: 1 : 1

DRAWN BY: REK

CHECKED BY:

DATE: JUNE, 2009

**McClure**  
Engineering Associates, Inc.  
7282 Argus Drive Rockford, Illinois 61107-5837  
(815) 398-2332 FAX (815) 398-2496  
Design Firm License: Illinois 184-000816  
Copyright 2009 By McClure Engineering Associates, Inc.

**PLAN AND PROFILE BRIDGE 104**  
PECATONICA PRAIRIE PATH  
STEPHENSON COUNTY SECTION 09-P4000-00-BT  
JOB NUMBER: 04-28-98-037

SHEET NO.  
**12**  
OF  
**26**