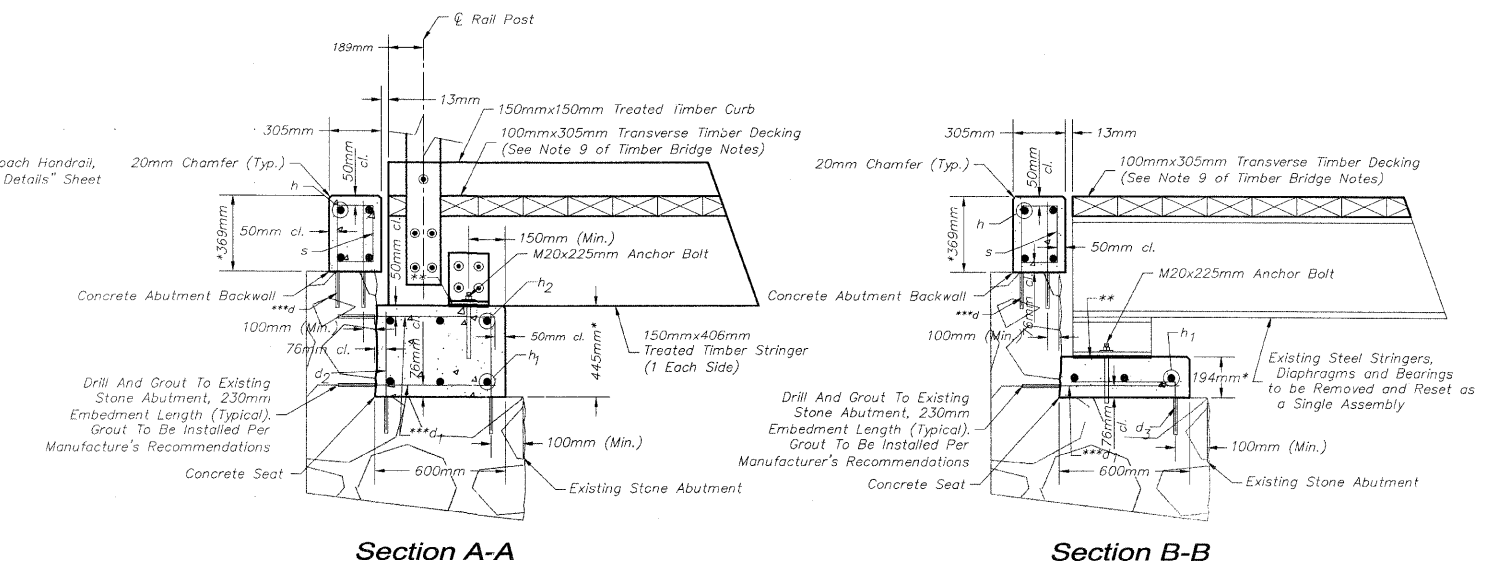
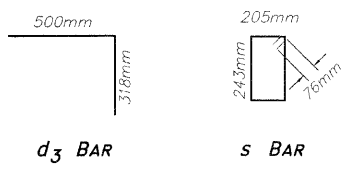


**PLAN** NOT TO SCALE

**BILL OF MATERIAL FOR BOTH ABUTMENTS**

Bar	No.	Size	Length	Shape
d	68	#13	0.548m	—
d <sub>1</sub>	44	#13	0.779m	—
d <sub>2</sub>	24	#13	0.624m	—
d <sub>3</sub>	20	#13	0.818m	—
h	8	#16	4.719m	—
h <sub>1</sub>	6	#16	3.848m	—
h <sub>2</sub>	12	#16	0.528m	—
s	34	#13	1.048m	□
Reinforcement Bars	kg		236	
Concrete Structures	CM		2.44	
Drill and Grout Bars	EA		156	
Anchor Bolts, M20	Each		20	

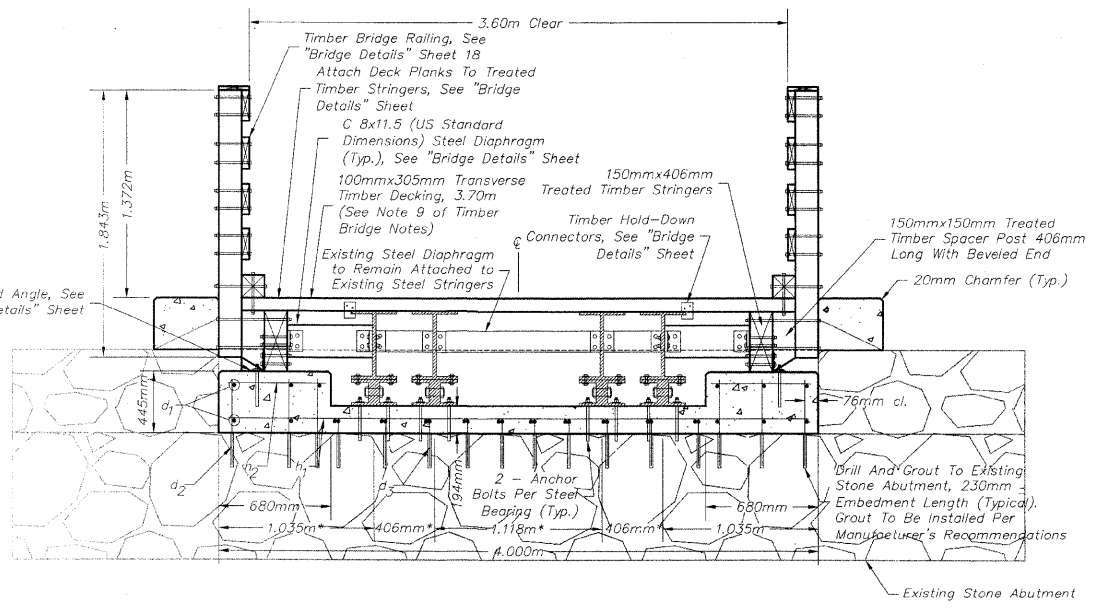


\* The Concrete Abutment Backwall Above The Existing Stone Abutment Shall Be Cast After The Timber And Steel Stringers Have Been Set In-Place. Field Verify Dimension To Match Top Of Timber Deck.

\*\* Provide 3mm Elastomeric Neoprene Leveling Pad According To The Material Properties Of Art. 1052.02 Of The IDOT Standard Specifications (Typ.). This Item Of Work Shall Not Be Paid For Separately But Shall Be Included With The Cost Of Concrete Structures.

\*\*\* Provide 100mm (Min.) Spacing Horizontally Between Drilling Locations for h Bars and h Bars to Prevent Drill Holes From Intersecting.

**CONCRETE SEAT DETAILS** NOT TO SCALE



**SECTION THRU DECK (DOUBLE BEAMS)** NOT TO SCALE

**BRIDGE DETAILS OVER A TRIBUTARY DITCH TO THE PECATONICA RIVER SECTION 09-P4000-00-BT STEPHENSON COUNTY STATION 11+447.24**

REVISIONS		
NO.	ITEM	DATE

PLOTTING SCALE: 1 : 1

DRAWN BY: PLH/CDS

CHECKED BY:

DATE: JUNE, 2009

**McClure Engineering Associates, Inc.**  
 7282 Argus Drive Rockford, Illinois 61107-5837  
 (815) 398-2332 FAX (815) 398-2496  
 Design Firm License: Illinois 184-000816  
 Copyright 2009 By McClure Engineering Associates, Inc.

**BRIDGE NO. 104 STA. 11+447.24**  
**PECATONICA PRAIRIE PATH**  
 STEPHENSON COUNTY SECTION 09-P4000-00-BT  
 JOB NUMBER: 04-28-98-037