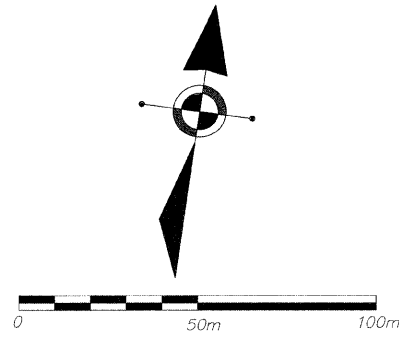
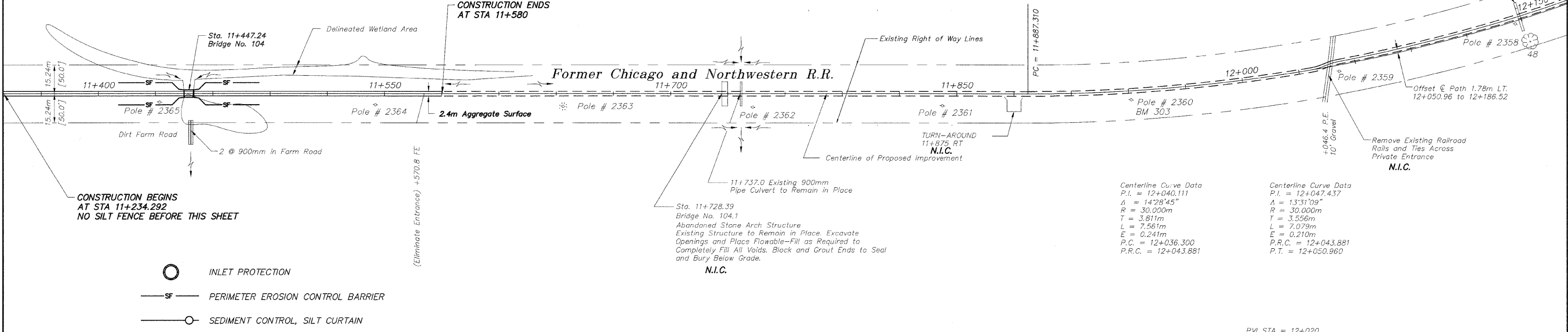


BM 303 RR Spike in Power Pole No. 2360  
Sta. 11+948.512 4.038m RT.  
Elev. 234.372

Centerline Curve Data  
P.I. = 12+038.414  
Δ = 19°46'03"  
R = 867.238m  
T = 151.104m  
L = 299.205m  
E = 13.066m  
P.C. = 11+887.310  
P.T. = 12+186.515



Former Structo Plant



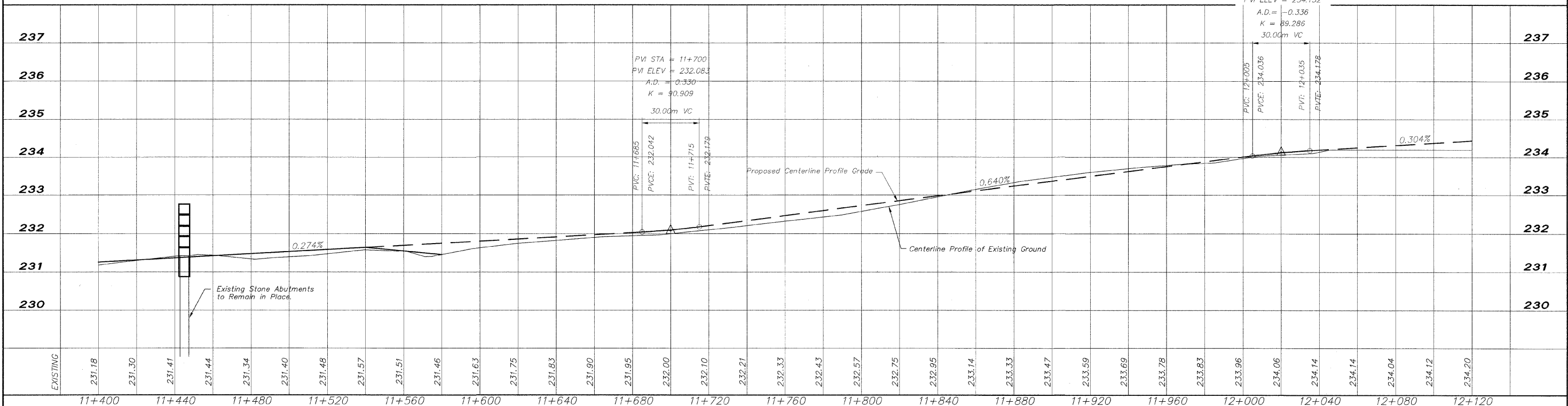
CONSTRUCTION BEGINS AT STA 11+234.292  
NO SILT FENCE BEFORE THIS SHEET

CONSTRUCTION ENDS AT STA 11+580

- INLET PROTECTION
- PERIMETER EROSION CONTROL BARRIER
- SEDIMENT CONTROL, SILT CURTAIN

Centerline Curve Data  
P.I. = 12+040.111  
Δ = 14°28'45"  
R = 30.000m  
T = 3.811m  
L = 7.561m  
E = 0.241m  
P.C. = 12+036.300  
P.R.C. = 12+043.881

Centerline Curve Data  
P.I. = 12+047.437  
Δ = 13°51'09"  
R = 30.000m  
T = 3.556m  
L = 7.079m  
E = 0.210m  
P.R.C. = 12+043.881  
P.T. = 12+050.960



FILE NAME: G:\98-037 PECPATH\Stephenson\DESIGN\DRAWINGS\#12 BRIDGE 104 EROSION CONTROL.dwg

REVISIONS		
NO.	ITEM	DATE

PLOTTING SCALE:	1 : 1
DRAWN BY:	REK
CHECKED BY:	
DATE:	JUNE, 2009

**McClure**  
Engineering Associates, Inc.  
7282 Argus Drive Rockford, Illinois 61107-5937  
(815) 398-2332 FAX (815) 398-2496  
Design Firm License: Illinois 184-000816  
Copyright 2009 By McClure Engineering Associates, Inc.

**BRIDGE 104 EROSION CONTROL PLAN**  
PECATONICA PRAIRIE PATH  
STEPHENSON COUNTY SECTION 09-P4000-00-BT  
JOB NUMBER: 04-28-98-037