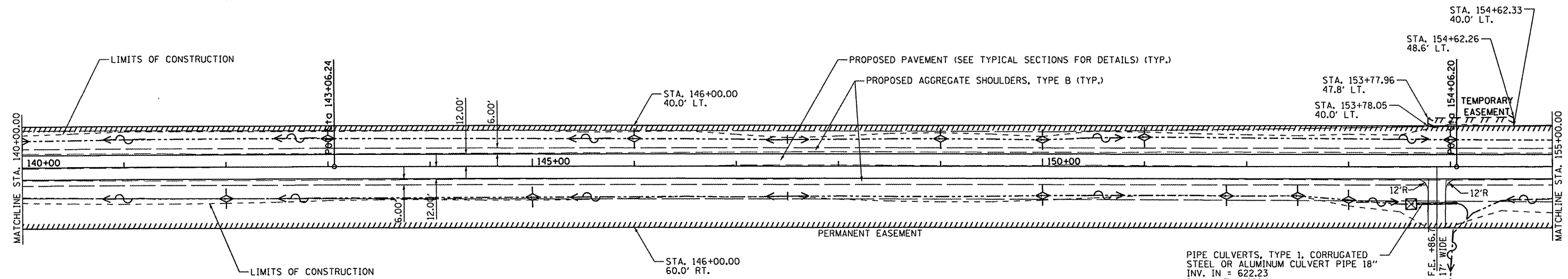


FREEMAN UNITED COAL MINING COMPANY



LEGEND

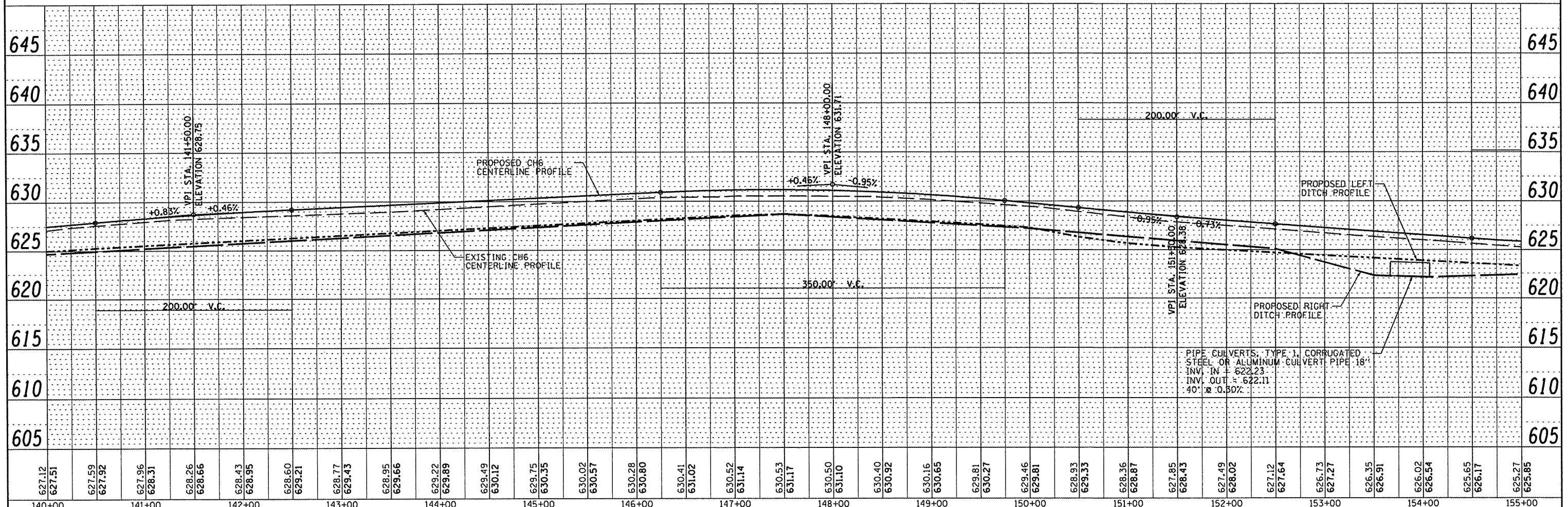
- PROP PERMANENT EASEMENT (PE)
- PROP TEMPORARY EASEMENT (TE)
- PERIMETER EROSION BARRIER
- LIMITS OF CONSTRUCTION
- PROPOSED DITCH LINE
- AERIAL ELECTRIC/CABLE (AE)

EROSION CONTROL

- TEMPORARY DITCH CHECK
- PIPE AND INLET PROTECTION
- STONE DUMPED RIP-RAP
- DITCH SUMMIT
- DITCH FLOW ARROW

FREEMAN UNITED COAL MINING COMPANY

PIPE CULVERTS, TYPE 1, CORRUGATED STEEL OR ALUMINUM CULVERT PIPE 18" INV. IN = 622.23 INV. OUT = 622.11 40' @ 0.30%



PIPE CULVERTS, TYPE 1, CORRUGATED STEEL OR ALUMINUM CULVERT PIPE 18" INV. IN = 622.23 INV. OUT = 622.11 40' @ 0.30%

DATE	
BY	
REVISIONS	
NO.	
DATE	
BY	
REVISIONS	
NO.	
DATE	
BY	
REVISIONS	
NO.	

MAUER & STUTZ, INC.
ENGINEERS SURVEYORS
2615 NORTH HAWKER DRIVE
MARIETTA, OHIO 45750
PH (609) 893-7615
FAX (609) 893-7616

DATE	
BY	
REVISIONS	
NO.	
DATE	
BY	
REVISIONS	
NO.	

FILE NAME *	USER NAME = #USER#	DESIGNED -	REVISED -	STATE OF ILLINOIS DEPARTMENT OF TRANSPORTATION	FULTON COUNTY HIGHWAY 6 PLAN & PROFILE	F.A.S. RTE.	SECTION	COUNTY	TOTAL SHEETS	SHEET NO.	
#FILE#		DRAWN -	REVISED -			1458	03-00125-02-RS	FULTON	66	12	
PLOT SCALE = #SCALE#		CHECKED -	REVISED -			CONTRACT NO. 89415					
PLOT DATE = #DATE#		DATE -	REVISED -			FED. ROAD DIST. NO. - [ILLINOIS] FED. AID PROJECT					
					SCALE: 1" = 50'	SHEET NO. 2 OF 8 SHEETS		STA. 140+00 TO STA. 155+00			