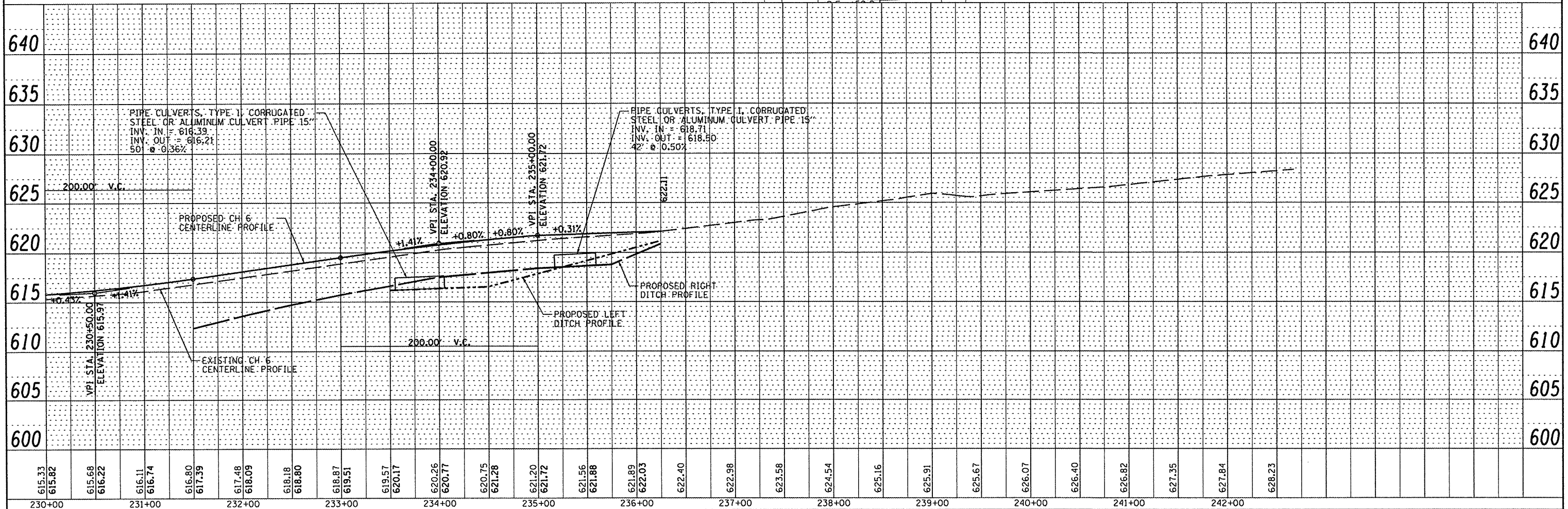
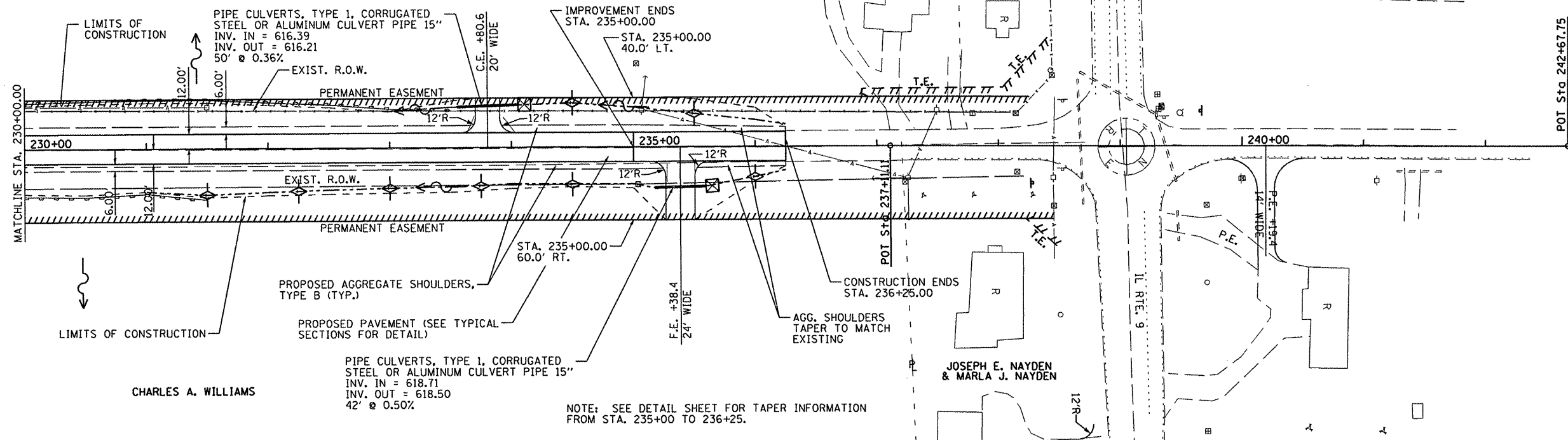


LEGEND

- ////// PROP PERMANENT EASEMENT (PE)
- TTTTTTT PROP TEMPORARY EASEMENT (TE)
- PERIMETER EROSION BARRIER
- LIMITS OF CONSTRUCTION
- PROPOSED DITCH LINE
- AERIAL ELECTRIC/CABLE (AE)

EROSION CONTROL

- ◇ TEMPORARY DITCH CHECK
- ⊠ PIPE AND INLET PROTECTION
- ▨ STONE DUMPED RIP-RAP
- ↔ DITCH SUMMIT
- DITCH FLOW ARROW



DATE	
BY	
PLANNED	
CHECKED	
NO.	

MAURER & STUTZ, INC.
 ENGINEERS & SURVEYORS
 7615 NORTH HARKER DRIVE
 PEORIA, ILLINOIS 61615
 PH: (309) 693-7615
 FAX: (309) 693-7616

DATE	
BY	
PROF. FILE	
SURVEYED	
CHECKED	
NO.	

FILE NAME =	USER NAME = #USER#	DESIGNED -	REVISED -	STATE OF ILLINOIS DEPARTMENT OF TRANSPORTATION	FULTON COUNTY HIGHWAY 6 PLAN & PROFILE	F.A.S. RTE.	SECTION	COUNTY	TOTAL SHEETS	SHEET NO.	
#FILE#		DRAWN -	REVISED -			1458	03-00125-02-RS	FULTON	66	18	
		CHECKED -	REVISED -			CONTRACT NO. 89415					
		DATE -	REVISED -			FED. ROAD DIST. NO. ILLINOIS FED. AID PROJECT					

SCALE: 1" = 50' SHEET NO. 8 OF 8 SHEETS STA. 230+00 TO STA. 242+00