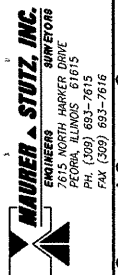
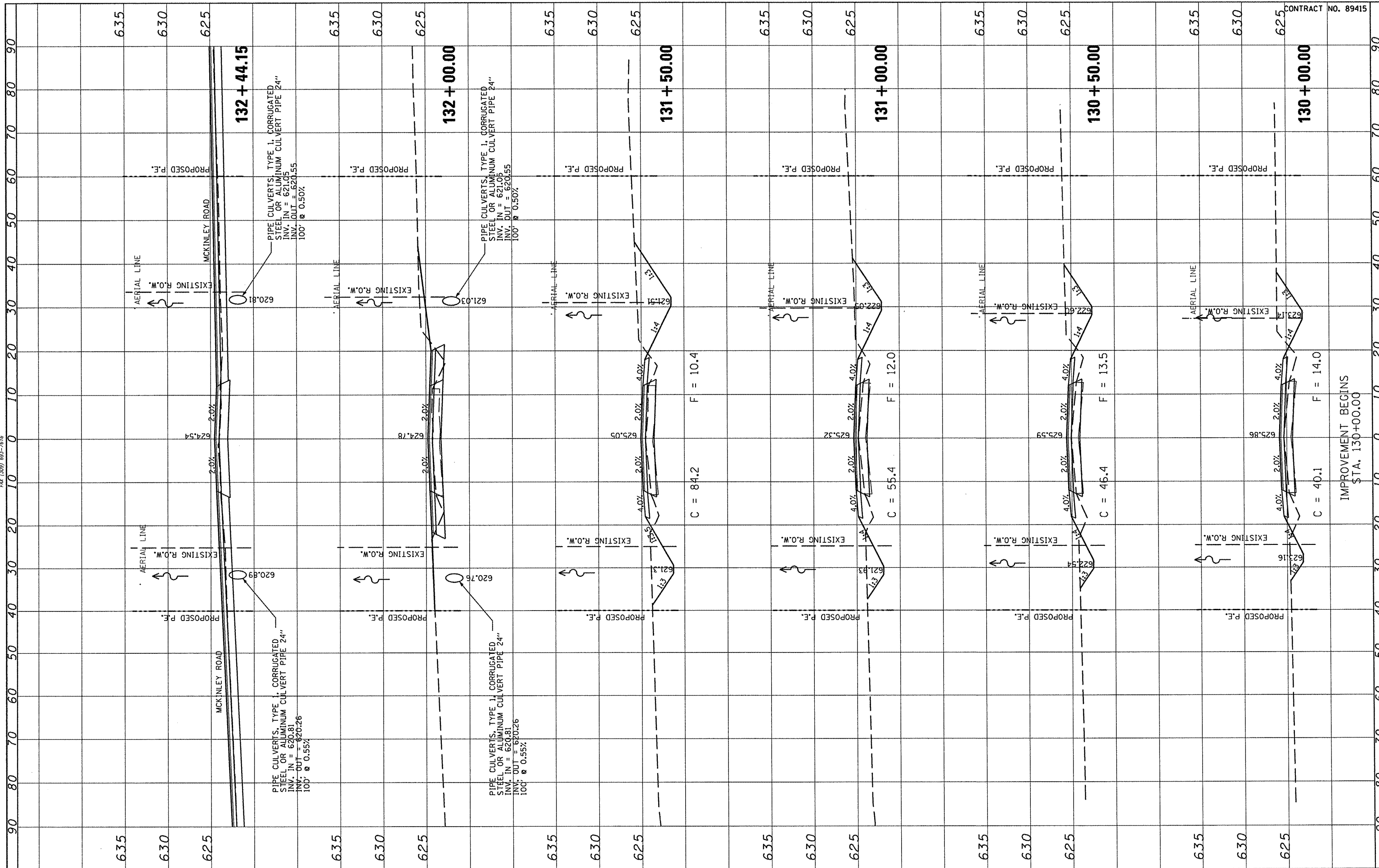


FINAL SURVEY	SURVEYED	BY	DATE
NOTE BOOK	PLOTTED		
NO.	TEMPLATE		
	AREAS CHECKED		



ORIGINAL SURVEY	SURVEYED	BY	DATE
NOTE BOOK	PLOTTED		
NO.	TEMPLATE		
	AREAS CHECKED		



IMPROVEMENT BEGINS
\$TA. 130+00.00

CONTRACT NO. 89415

FILE NAME *	USER NAME = #USER*	DESIGNED -	REVISED -	STATE OF ILLINOIS DEPARTMENT OF TRANSPORTATION	FULTON COUNTY HIGHWAY 6 CROSS SECTIONS				F.A.S. RTE. 1458	SECTION 03-00125-02-RS	COUNTY FULTON	TOTAL SHEETS 66	SHEET NO. 28
#FILE#		DRAWN -	REVISED -		SCALE:	SHEET NO.	OF	SHEETS	STA. 130+00.00	TO STA. 132+44.15	CONTRACT NO. 89415		
		CHECKED -	REVISED -								ILLINOIS FED. AID PROJECT		
		DATE -	REVISED -										