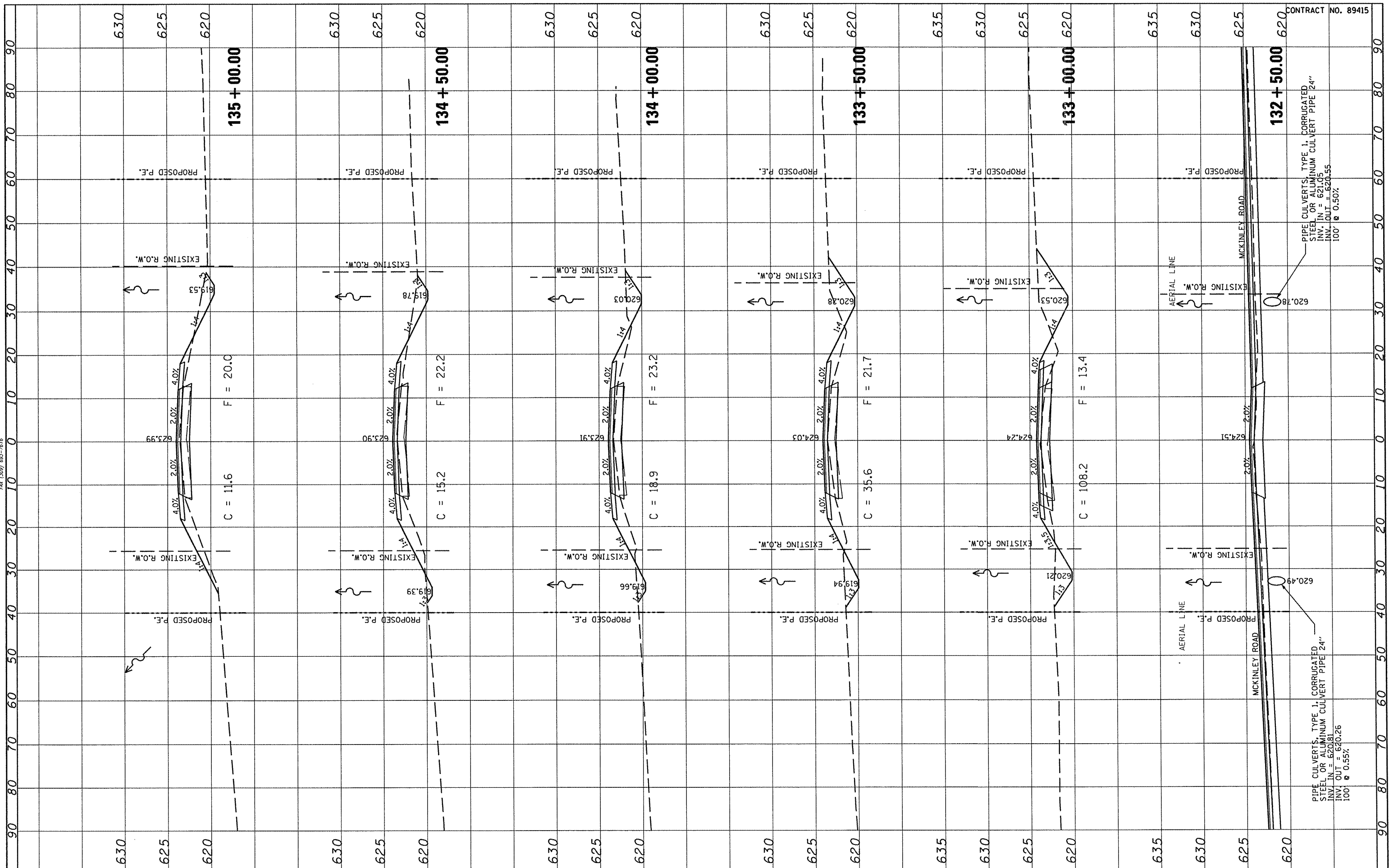


FINAL SURVEY	SURVEYED	BY	DATE
NOTE BOOK	PLOTTED		
AREAS CHECKED	TEMPLATE		
NO.	AREAS CHECKED		



ORIGINAL SURVEY	SURVEYED	BY	DATE
NOTE BOOK	PLOTTED		
AREAS CHECKED	TEMPLATE		
NO.	AREAS CHECKED		



CONTRACT NO. 89415

PIPE CULVERTS, TYPE 1, CORRUGATED STEEL OR ALUMINUM CULVERT PIPE 24" IN. IN = 620.05 INV. OUT = 620.55 100' @ 0.50%

PIPE CULVERTS, TYPE 1, CORRUGATED STEEL OR ALUMINUM CULVERT PIPE 24" IN. IN = 620.81 INV. OUT = 620.26 100' @ 0.55%

FILE NAME #	USER NAME # USER #	DESIGNED -	REVISED -	STATE OF ILLINOIS DEPARTMENT OF TRANSPORTATION				FULTON COUNTY HIGHWAY 6 CROSS SECTIONS				F.A.S. RT. #	SECTION	COUNTY	TOTAL SHEETS	SHEET NO.			
#FILE#		DRAWN -	REVISED -									1458	03-00125-02-RS	FULTON	66	29			
		PLOT SCALE # SCALE #	CHECKED -	REVISED -									CONTRACT NO. 89415						
		PLOT DATE # DATE #	DATE -	REVISED -									FED. ROAD DIST. NO. [ILLINOIS] FED. AID PROJECT						
SCALE:												SHEET NO. OF SHEETS STA. 132+50.00 TO STA. 135+00.00							