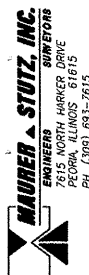
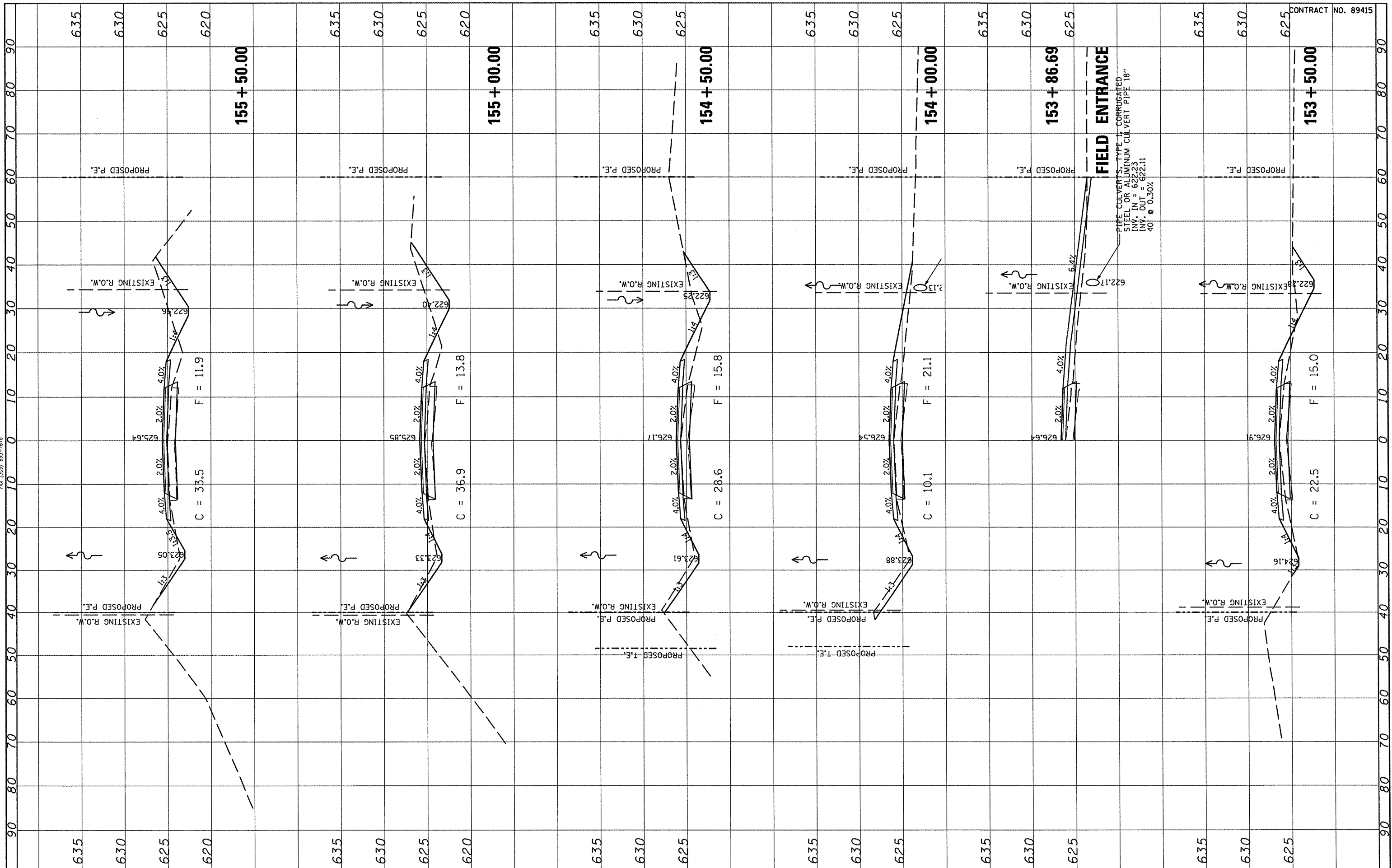


FINAL SURVEY	NO.
SKIPPED	AREAS CHECKED
PLOTTED	AREAS CHECKED
TEMPLATE	AREAS CHECKED
NOTE BOOK	AREAS CHECKED
DATE	



ORIGINAL SURVEY	NO.
SKIPPED	AREAS CHECKED
PLOTTED	AREAS CHECKED
TEMPLATE	AREAS CHECKED
NOTE BOOK	AREAS CHECKED
DATE	



PIPE CULVERTS - TYPE II CORRUGATED
STEEL OR ALUMINUM CULVERT PIPE 18"
INV. IN = 622.23
INV. OUT = 622.11
40' @ 0.30%

CONTRACT NO. 89415

FILE NAME *	USER NAME * #USER*	DESIGNED -	REVISED -	STATE OF ILLINOIS DEPARTMENT OF TRANSPORTATION	FULTON COUNTY HIGHWAY 6 CROSS SECTIONS	F.A.S. RTE.	SECTION	COUNTY	TOTAL SHEETS	SHEET NO.	
#FILE#		DRAWN -	REVISED -			1458	03-00125-02-RS	FULTON	66	36	
		CHECKED -	REVISED -			CONTRACT NO. 89415					
		DATE -	REVISED -			SCALE:	SHEET NO. OF SHEETS	STA. 153+50.00 TO STA. 155+50.00	FED. ROAD DIST. NO.	ILLINOIS FED. AID PROJECT	