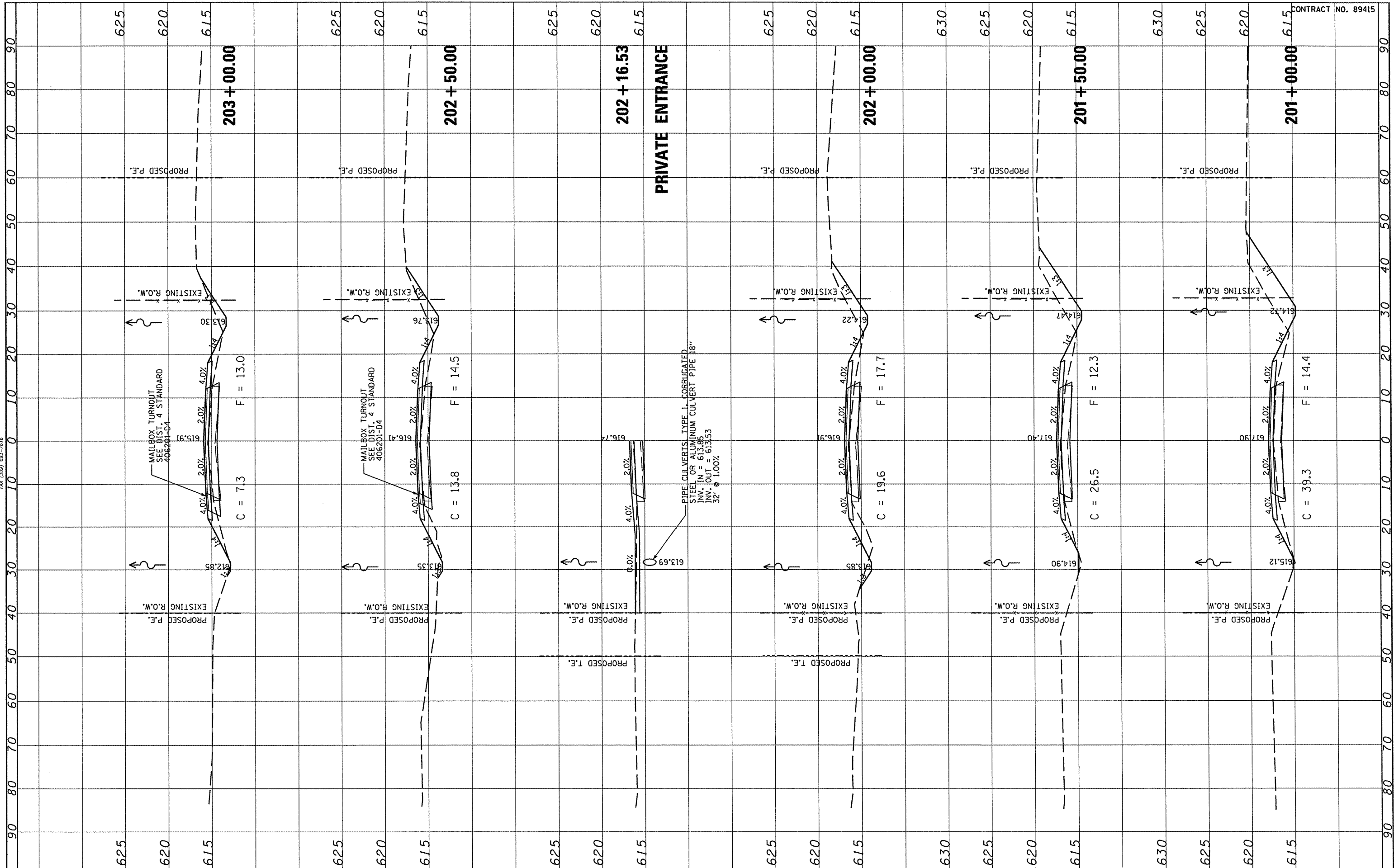


FINL SURVEY	SURVEYED	BY	DATE
NOTE BOOK	PLOTTED		
AREAS CHECKED	TEMPLATE		
NO.	AREAS CHECKED		



ORIGINAL SURVEY	SURVEYED	BY	DATE
NOTE BOOK	PLOTTED		
AREAS CHECKED	TEMPLATE		
NO.	AREAS CHECKED		



CONTRACT NO. 89415

FILE NAME =	USER NAME = *USER*	DESIGNED -	REVISED -	STATE OF ILLINOIS DEPARTMENT OF TRANSPORTATION	FULTON COUNTY HIGHWAY 6 CROSS SECTIONS				F.A.S. RTE. 1458	SECTION 03-00125-02-RS	COUNTY FULTON	TOTAL SHEETS 66	SHEET NO. 54
*FILE#		DRAWN -	REVISED -		SCALE:	SHEET NO.	OF	SHEETS	STA. 201+00.00	TO STA. 203+00.00	CONTRACT NO. 89415		
		CHECKED -	REVISED -		FED. ROAD DIST. NO. [ILLINOIS] FED. AID PROJECT								
		DATE -	REVISED -										