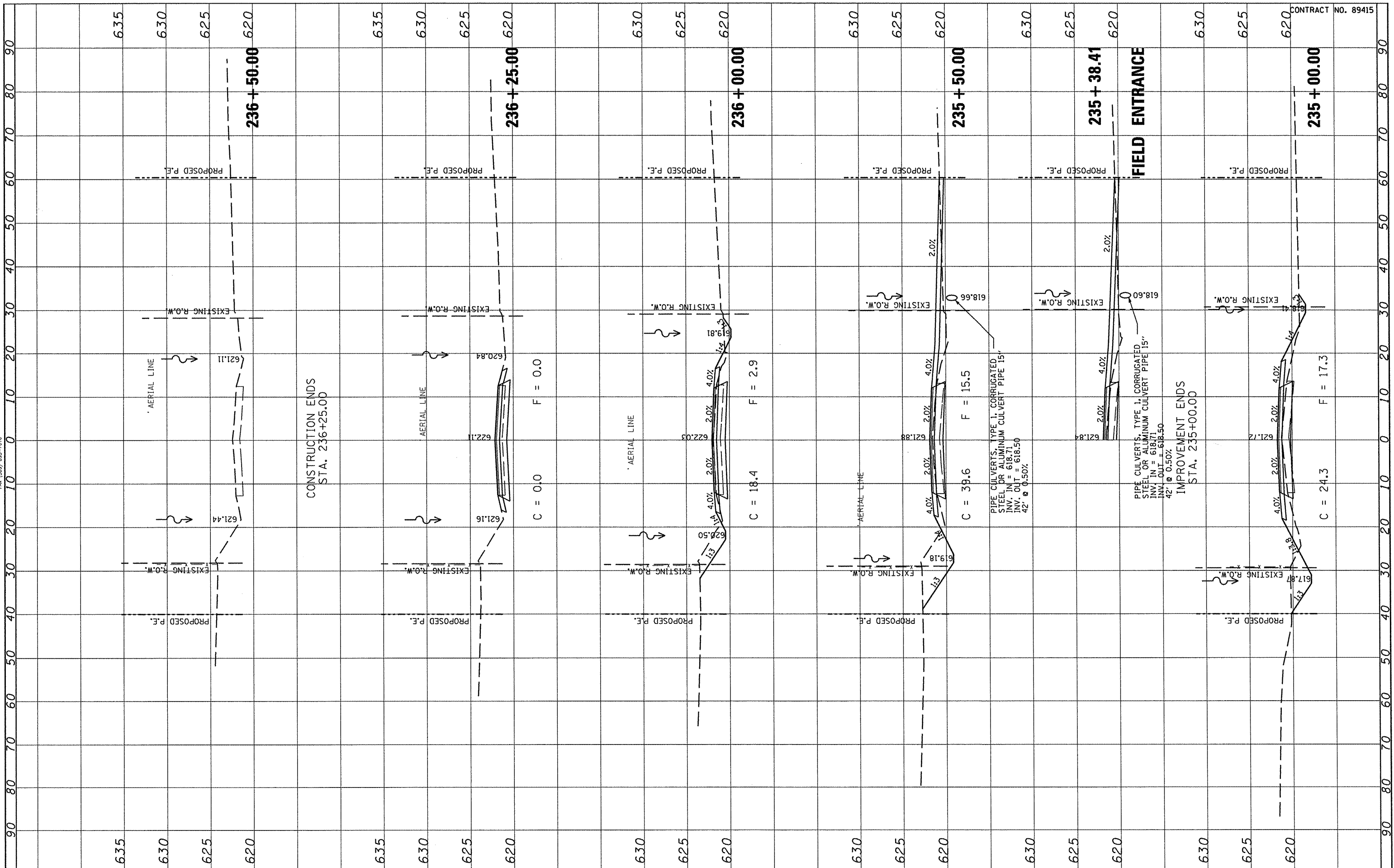


FINAL SURVEY	BY	DATE
NOTED		
PLOTTED		
TEMPLATE		
AREAS CHECKED		



ORIGINAL SURVEY	BY	DATE
NOTED		
PLOTTED		
TEMPLATE		
AREAS CHECKED		



FILE NAME =	USER NAME = #USER#	DESIGNED -	REVISED -	STATE OF ILLINOIS DEPARTMENT OF TRANSPORTATION	FULTON COUNTY HIGHWAY 6 CROSS SECTIONS	F.A.S. RTE.	SECTION	COUNTY	TOTAL SHEETS	SHEET NO.	
#FILE#		DRAWN -	REVISED -			1458	03-00125-02-RS	FULTON	66	66	
		CHECKED -	REVISED -			CONTRACT NO. 89415					
		DATE -	REVISED -			FED. ROAD DIST. NO. ILLINOIS FED. AID PROJECT					

CONTRACT NO. 89415

SCALE: SHEET NO. OF SHEETS STA. 235+00.00 TO STA. 237+00.00