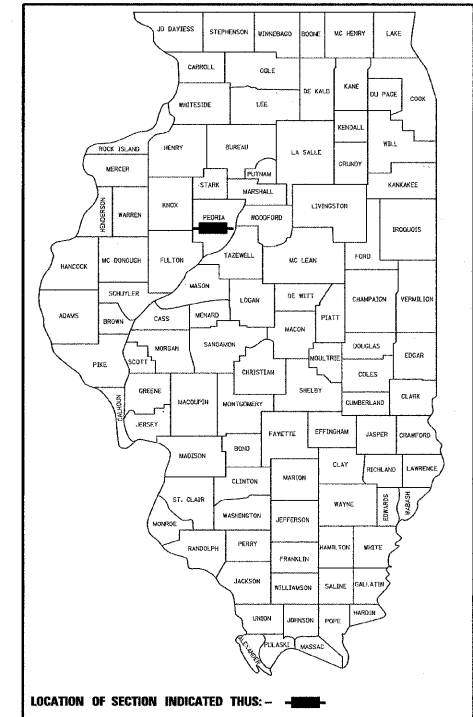


STATE OF ILLINOIS  
DEPARTMENT OF TRANSPORTATION  
DIVISION OF HIGHWAYS

PLANS FOR PROPOSED  
AMERICAN RECOVERY  
AND REINVESTMENT ACT

PROJECT ARA-5093 (143)  
SECTION 09-00068-00-RS  
STATE JOB NO. C-94-116-09

GARFIELD AVENUE OVERLAY  
FAU ROUTE 6678  
VILLAGE OF BARTONVILLE  
PEORIA COUNTY



FUNCTIONAL CLASSIFICATION: MINOR ARTERIAL  
DESIGN SPEED: 40 MPH  
DESIGN TRAFFIC: 8,200 ADT (2006)  
DESIGN GUIDELINES: 3R

038877 REGISTERED PROFESSIONAL ENGINEER OF ILLINOIS

DAVID A. WRIGHT, P.E.  
ILLINOIS REGISTRATION No. 062-038877  
EXPIRATION DATE: NOVEMBER/2009

8/6/09  
DATE

INDEX OF SHEETS

DESCRIPTION	SHEET NO.
COVER SHEET	1
GENERAL NOTES, TYP. SECTION AND SUMMARY OF QUANTITIES	2
GARFIELD AVE. ROADWAY PLAN	3-5

IDOT STANDARDS

STD. 701501-05	Urban Lane Closure, 2L, 2W Undivided
STD. 701901-01	Traffic Control Devices

UTILITIES  
ILLINOIS AMERICAN WATER - PEORIA DISTRICT  
123 SW WASHINGTON STREET  
PEORIA, ILLINOIS 61602

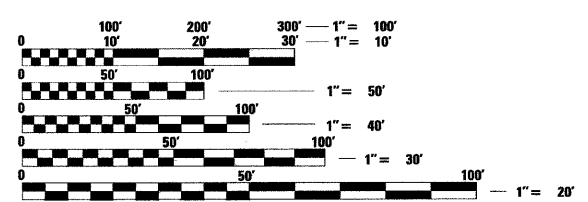
AMERITECH  
2315 KNOXVILLE ROAD  
PEORIA, ILLINOIS 61604

AMEREN-CILCO  
8420 N. UNIVERSITY STREET  
PEORIA, ILLINOIS 61614

COMCAST CORP.  
3517 N. DRIES LANE  
PEORIA, ILLINOIS 61604

GREATER PEORIA SANITARY DISTRICT  
2322 S. DARST STREET  
PEORIA, ILLINOIS 61607

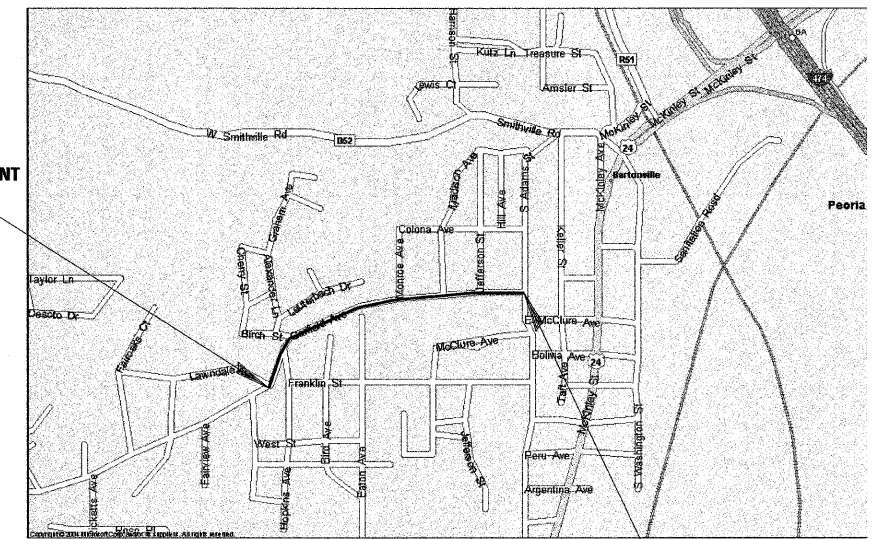
NPDES PERMIT NOT REQUIRED



FULL SIZE PLANS HAVE BEEN PREPARED USING STANDARD ENGINEERING SCALES. REDUCED SIZED PLANS WILL NOT CONFORM TO STANDARD SCALES. IN MAKING MEASUREMENTS ON REDUCED PLANS, THE ABOVE SCALES MAY BE USED.

J.U.L.I.E.  
JOINT UTILITY LOCATION INFORMATION FOR EXCAVATION  
1-800-892-0123

BEGIN GARFIELD AVE. IMPROVEMENT  
STA. 20 + 02.76



END GARFIELD AVE IMPROVEMENT  
STA. 46 + 17.00

LOCATION MAP

GROSS LENGTH OF IMPROVEMENT: 2614 FEET = 0.495 MILES  
NET LENGTH OF IMPROVEMENT: 2614 FEET = 0.495 MILES

**CHRISTOPHER B. BURKE** ENGINEERING LTD.  
202 NE Madison Avenue, Suite 301  
Peoria, Illinois 61602  
(309) 676-9000

APPROVED 8-6 2009  
Rhonda Wolfe  
VILLAGE OF BARTONVILLE, PRESIDENT

PASSED 8-13 2009  
Derek Bush  
DISTRICT 4 ENGINEER OF LOCAL ROADS AND STREETS

RELEASING FOR BID BASED ON LIMITED REVIEW August 14 2009  
Deputy Director of Highways, Region 3 Engineer

STATE OF ILLINOIS  
DEPARTMENT OF TRANSPORTATION

**GENERAL NOTES**

ALL WORK SHALL BE CONSTRUCTED IN ACCORDANCE WITH APPLICABLE SECTIONS OF THE ILLINOIS DEPARTMENT OF TRANSPORTATION "STANDARD SPECIFICATIONS FOR ROAD AND BRIDGE CONSTRUCTION", ADOPTED JANUARY 1, 2007

ALL EXISTING UTILITIES SHOWN ON PLANS ARE APPROXIMATE AND EXACT LOCATIONS SHALL BE DETERMINED BY THE CONTRACTOR PRIOR TO CONSTRUCTION. CALL JULIE 1-800-892-0123 PRIOR TO CONSTRUCTION.

THE CONTRACTOR SHALL BE RESPONSIBLE FOR THE PROTECTION OF ALL UTILITIES EVEN THOUGH THEY MAY NOT BE SHOWN ON THE PLANS. ANY UTILITY THAT IS DAMAGED BY THE CONTRACTOR DURING CONSTRUCTION SHALL BE REPAIRED OR REPLACED TO THE SATISFACTION OF OWNER. SUCH WORK WILL BE AT THE CONTRACTOR'S EXPENSE.

CONTRACTOR SHALL IMMEDIATELY REPORT TO OWNER'S REPRESENTATIVE. IF DISCREPANCIES ARE FOUND ON THE CONTRACT DRAWINGS, CONTRACTOR SHALL NOT PROCEED WITH RELATED WORK UNTIL SUCH DISCREPANCIES ARE RESOLVED.

THE CONTRACTOR SHALL BE RESPONSIBLE FOR PROVIDING TRAFFIC CONTROL FOR ANY CONSTRUCTION ADJACENT TO A PUBLIC HIGHWAY/STREET OR CONTROLLING TRAFFIC ENTERING OR LEAVING A PUBLIC STREET. TRAFFIC CONTROL SHALL BE PROVIDED PER THE APPROPRIATE IDOT STANDARD AND PER APPLICABLE SECTIONS OF THE IDOT STANDARD SPECIFICATION.

THE CONTRACTOR SHALL NOT OPEN OR SHUT ANY WATER VALVES OR HYDRANTS. IF WATER IS NEEDED DURING CONSTRUCTION ACTIVITIES, THE CONTRACTOR SHALL CONTACT ILLINOIS AMERICAN WATER COMPANY.

DURING CONSTRUCTION OPERATIONS, WHENEVER ANY LOOSE MATERIAL IS DEPOSITED IN THE FLOW LINES OF DRAINAGE STRUCTURES SUCH THAT THE NATURAL FLOW OF WATER IS OBSTRUCTED, IT SHALL BE REMOVED AT THE CLOSE OF EACH WORKING DAY. AT THE CONCLUSION OF CONSTRUCTION ALL DRAINAGE AND UTILITY STRUCTURES SHALL BE FREE OF DIRT AND DEBRIS.

ALL WORK ON BARTONVILLE RIGHT OF WAY SHALL BE SUBJECT TO PERMITS AND INSPECTIONS BY THE VILLAGE. THE CONTRACTOR SHALL BE RESPONSIBLE FOR OBTAINING APPLICABLE PERMITS AND NOTIFYING THE CITY OF PENDING CONSTRUCTION. IF PERMITS ARE NOT ISSUED DUE TO DISCREPANCIES ON THE PLANS NOTIFY THE ENGINEER.

ACCESS MUST BE MAINTAINED TO ALL PROPERTIES DURING CONSTRUCTION IN ACCORDANCE WITH ARTICLE 107.09 OF THE STANDARD SPECIFICATIONS. ARRANGEMENTS WITH THE PROPERTY OWNERS FOR SHORT TERM CLOSURES MAY BE MADE BY THE CONTRACTOR.

VALVE BOXES, DOMESTIC METER VAULTS, MANHOLES FRAMES AND CURB STOP SERVICE BOXES, IF NEEDED, SHALL BE ADJUSTED TO THE FINAL GRADE. THIS WORK WILL NOT BE PAID FOR SEPARATELY.

THE LOCATION OF EXISTING UNDERGROUND UTILITIES, AS SHOWN ON THE PLANS, ARE BASED ON CAREFUL FIELD INVESTIGATION AND THE BEST INFORMATION AVAILABLE, BUT THEY ARE NOT GUARANTEED. IT SHALL BE THE CONTRACTOR'S RESPONSIBILITY TO DETERMINE THEIR EXACT LOCATION FROM THE UTILITY COMPANIES AND BY FIELD INVESTIGATION, AS REQUIRED BY CONSTRUCTION.

THE CONTRACTOR SHALL NOTIFY AND RECEIVE APPROVAL FROM THE ENGINEER PRIOR TO REMOVING OR COVERING UP ANY SURVEY MONUMENTS OR PROPERTY MARKERS.

THE CONTRACTOR SHALL CONFINE THE CONSTRUCTION WITHIN THE RIGHT OF WAY OR TEMPORARY CONSTRUCTION EASEMENT.

CONTRACTOR SHALL TAKE REASONABLE PRECAUTIONS SO AS TO PREVENT DAMAGE FROM OCCURRING TO ALL EXISTING BUILDINGS, STRUCTURES, PUBLIC AND PRIVATE PROPERTY AS A RESULT OF CONSTRUCTION.

SIGNS, MAILBOXES, FENCE, FENCE RAILS, POST, LANDSCAPING ITEMS NOT IDENTIFIED ON THE BID SCHEDULE WHICH ARE DAMAGED OR DISTURBED DURING CONSTRUCTION SHALL BE REPLACED WITH LIKE MATERIALS AND CONSTRUCTION. THIS WORK SHALL BE INCLUDED IN THE CONTRACT AMOUNT.

THE CONTRACTOR SHALL COMPLY WITH THE LEGAL STREET LOADING LIMITS ESTABLISHED BY THE VILLAGE. THE CONTRACTOR SHALL BE RESPONSIBLE FOR ANY DAMAGE CAUSED BY LUGS OR CLEATS ON TREADS OR WHEELS, EXCESSIVE WEIGHTS, AND LOADS, ETC.

POLYMERIZED BITUMINOUS MATERIALS (PRIME COAT) SHALL BE APPLIED THE NIGHT BEFORE PLACING THE SURFACE COURSE AND FLAGGERS SHALL BE USED TO KEEP TRAFFIC OFF THE PRIME UNTIL IT CURES. THE PRIME SHALL BE APPLIED AT THE RATE OF 0.04 GAL/SY RESIDUAL OIL CONTENT.

**SUMMARY OF QUANTITIES**

PAY ITEM	UNIT	QUANTITY
40600215 POLYMERIZED BITUMINOUS MATERIALS (PRIME COAT)	TON	1.52
40603335 HOT-MIX ASPHALT SURFACE COURSE, MIX "D", N50, 1 1/2"	TON	807
44000155 HOT-MIX ASPHALT SURFACE REMOVAL, 1-1/2"	SQ YD	9604
67100100 MOBILIZATION	LS	1
70102620 TRAFFIC CONTROL AND PROTECTION, STANDARD 701501	LS	1
* 78000100 THERMOPLASTIC PAVEMENT MARKING LETTERS AND SYMBOLS	SQ FT	17.6
* 78000200 THERMOPLASTIC PAVEMENT MARKING LINE, 4"	FOOT	9849
* 78000500 THERMOPLASTIC PAVEMENT MARKING LINE, 8"	FOOT	100
* 78000600 THERMOPLASTIC PAVEMENT MARKING LINE, 12"	FOOT	221
* 78000650 THERMOPLASTIC PAVEMENT MARKING LINE, 24"	FOOT	24
Z0062000 SAW CUTTING	FOOT	358

\* SPECIALTY ITEMS

RATE OF APPLICATION	
HOT-MIX ASPHALT	
HOT-MIX ASPHALT SURFACE COURSE	112 LB/SQ YD/INCH
HOT-MIX ASPHALT BINDER COURSE	112 LB/SQ YD/INCH
CONVERSION	0.056 TONS/SQ YD/INCH
BITUMINOUS MATERIALS (PRIME COAT)	
ON COLDMILLED SURFACE	0.04 GAL/SQ YD
CONVERSION	0.004 TONS = 1 GALLON
AGGREGATE (PRIME COAT)	
FOG COAT	2 LB/SQ YD

HOT-MIX ASPHALT MIXTURE REQUIREMENTS	
THE FOLLOWING MIXTURE REQUIREMENTS ARE APPLICABLE FOR THIS PROJECT	
MIXTURE USE (S):	SURFACE COURSE
AC/PC	64-22
RAP % (Max) **	15%
DESIGN AIR VOIDS	4.0% @ NDES = N50
MIXTURE COMPOSITION	IL 9.5 OR IL 12.5
FRICTION AGGREGATE	MIXTURE D

\*\* IF > 15% RAP IS USED THE CONTRACTOR MAY BE REQUIRED TO USE A SOFTER GRADE OF ASPHALT AS DETERMINED BY THE MATERIALS ENGINEER.

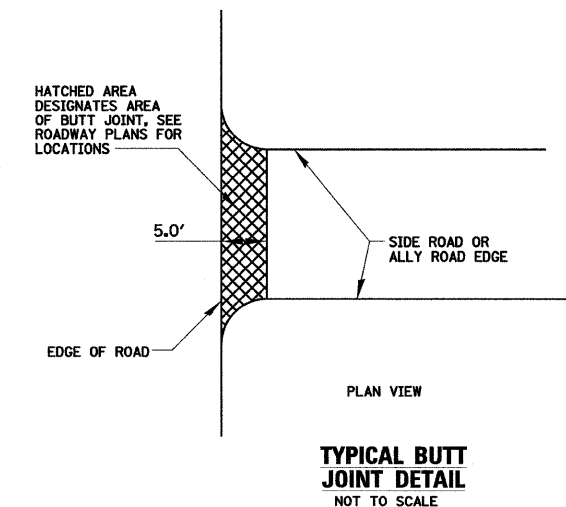
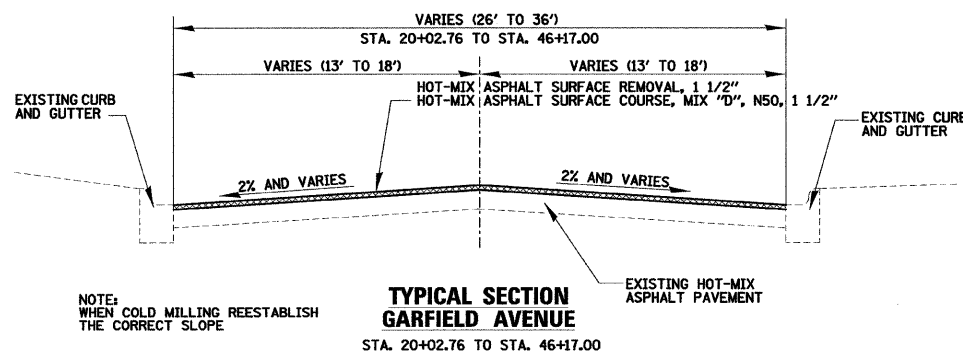
BITUMINOUS PAVEMENT SCHEDULE				40600215 POLYMERIZED BITUMINOUS MATERIALS (PRIME COAT)	40603335 HOT-MIX ASPHALT SURFACE COURSE, MIX "D", N50	44000155 HOT-MIX ASPHALT SURFACE REMOVAL, 1 1/2"
LOCATION	LENGTH	WIDTH	AREA	WEIGHT	WEIGHT	AREA
STATION TO STATION	FEET	FEET	SQ FEET	TONS	TONS	SQ YDS
20+02 - 46+17	2615	VARIES	85633	9515	1.52	807
						9604

MOBILIZATION	67100100
LOCATION	L SUM
ENTIRE JOB SITE	1.00
TOTAL	1.00

TRAFFIC CONTROL AND PROTECTION	70102620
LOCATION	L SUM
ENTIRE JOB SITE	1.00
TOTAL	1.00

PAVEMENT MARKING SCHEDULE	78000100 THERMOPLASTIC PAVEMENT MARKING LETTER AND SYMBOLS SQ YDS	78000200 THERMOPLASTIC PAVEMENT MARKING LINE, 4" FOOT	78000500 THERMOPLASTIC PAVEMENT MARKING LINE, 8" FOOT	78000600 THERMOPLASTIC PAVEMENT MARKING LINE, 12" FOOT	78000650 THERMOPLASTIC PAVEMENT MARKING LINE, 24" FOOT
20+53 - 22+76 CL		272			
20+53 - 22+76 CL		924			
20+64 - 24+74 LT		410		171	
23+23 CL					12
23+42 CL	8.8				
23+23 - 24+93 CL		338			
23+23 - 23+73 LT			50		
24+43 - 24+93 RT			50		
24+74 CL	8.8				
23+45 - 46+06 RT		2257			
24+93 CL					12
25+51 - 35+19 LT		979			
25+54 - 26+80 CL				50	
25+54 - 26+80 CL		520			
26+80 - 35+19 CL		1678			
35+74 - 38+84 LT		311			
35+75 - 38+82 CL		614			
39+40 - 40+82 LT		141			
39+40 - 42+55 CL		630			
41+12 - 42+56 LT		144			
43+05 - 44+40 LT		135			
43+08 - 44+94 CL		372			
44+80 - 46+01 LT		124			
TOTAL	17.6	9849	100	221	24

SAW CUTTING	Z0062000
STATION TO STATION	FOOT
20+02	34
20+09 - 20+85	56
22+85 - 23+23	38
24+91 - 25+24	33
35+32 - 35+80	28
28+99 - 39+27	28
40+89 - 41+04	15
42+67 - 42+91	24
44+57 - 44+89	12
46+10 - 46+23	22
46+23 - 46+16	25
46+17 - 46+20	21
46+18 - 46+03	22
TOTAL	358



CHRISTOPHER B. BURKE ENGINEERING, LTD.

CLIENT:

VILLAGE OF BARTONVILLE

5912 S. ADAMS STREET  
BARTONVILLE, IL 61607

NO.	DATE	NATURE OF REVISION	CHKD.	MODEL:	Def'ault
FILE NAME	P:\09255\Civil\gen09255-01.scd				

TITLE:

**GARFIELD AVE. OVERLAY  
GENERAL NOTES, TYPICAL SECTION  
AND SUMMARY OF QUANTITIES**

PROJ. NO. 09-255

DATE: 8-7-2009

SHEET 2 OF 5

DRAWING NO.

GEN-1





