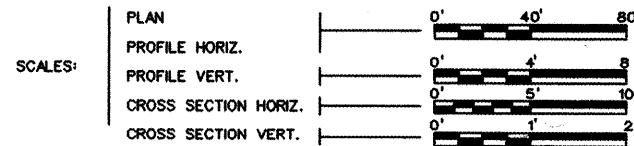


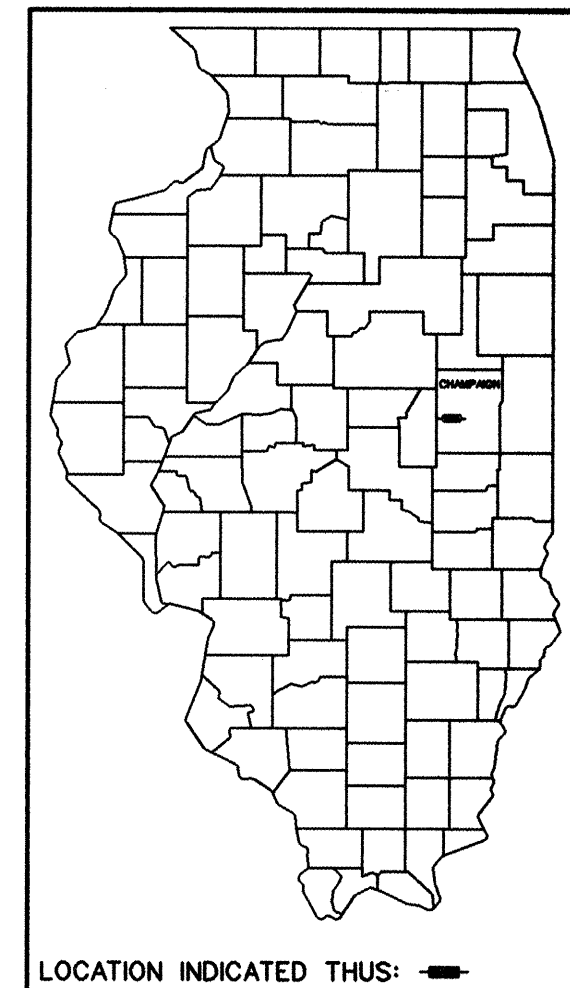
STATE OF ILLINOIS DEPARTMENT OF TRANSPORTATION PLANS FOR WIDENING MONTICELLO ROAD

INDEX OF SHEETS

SHEET NO.	DESCRIPTION
1	COVER SHEET
2	HIGHWAY STANDARDS
3	GENERAL NOTES AND LEGEND
4	SUMMARY OF QUANTITIES
5-6	TYPICAL SECTIONS
7-10	SCHEDULE OF QUANTITIES
11	BENCHMARK SHEET
12-34	PLAN AND PROFILE SHEETS
35-36	STRUCTURAL DETAIL SHEETS
37-38	DETAIL SHEETS
39-50	RIGHT OF WAY PLAN SHEETS
51-162	CROSS SECTIONS

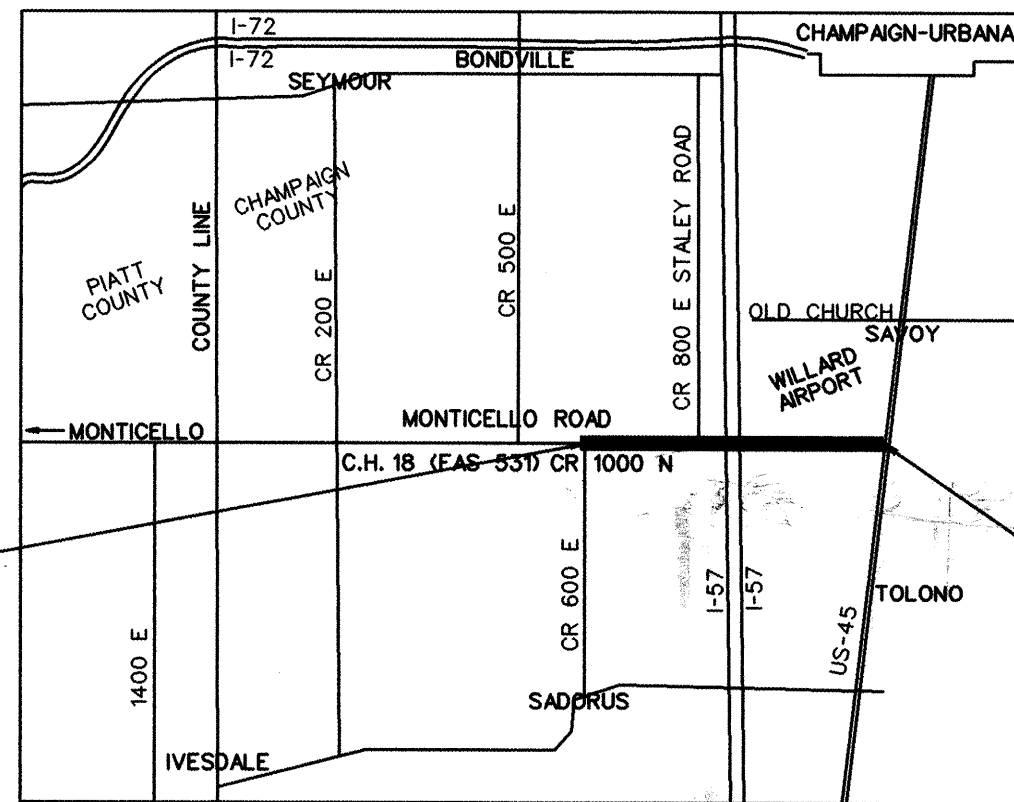


CHAMPAIGN COUNTY SECTION 07-00419-00-RS C.H. 18 (F.A.S. 531) ARA-HSIP-531(108)



ILLINOIS DEPT. OF TRANSPORTATION
STANDARD DRAWINGS

SEE NEXT SHEET FOR LIST OF STANDARDS



BEGIN IMPROVEMENTS
STATION 416+35

END IMPROVEMENTS
STATION 674+44

OMISSIONS:
425+98 TO 426+59
536+41 TO 555+46

ADT = 5,200

FUNCTIONAL CLASS - MAJOR COLLECTOR & MINOR ARTERIAL

LOCATION MAP
NOT TO SCALE

TOTAL LENGTH - 4.89 MILES
NET LENGTH OF SECTION - 23,843 FEET - 4.52 MILES

APPROVED 7/17 2009
J. Blue
CHAMPAIGN COUNTY ENGINEER

PASSED 7/23 2009
Daniel A. ...
DISTRICT FIVE ENGINEER OF
LOCAL ROADS & STREETS

Released For Bid Based on Limited Review 7/23 2009
Joseph E. ...
DEPUTY DIRECTOR OF HIGHWAYS,
REGION THREE ENGINEER

STATE OF ILLINOIS
DEPARTMENT OF TRANSPORTATION

FOR JOINT UTILITY INFORMATION
CALL J.U.L.I.E. 1-800-892-0123

CONTRACT * 91393

See B. Hedrick 7/17/09
ELLEN B. HEDRICK
ILLINOIS REGISTERED PROFESSIONAL ENGINEER NO. 062-049131
LICENSE EXPIRES 11-30-09



Sodemann and Associates, Inc.
340 NORTH NEIL STREET
POST OFFICE BOX 557
CHAMPAIGN, ILLINOIS 61824-0557
TEL 217 352-7688 FAX 217 352-7922
ENGINEERING / ANALYSIS / MANAGEMENT

