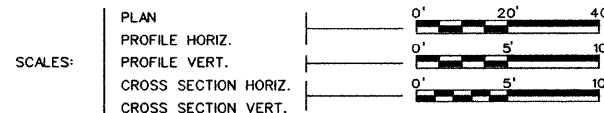


STATE OF ILLINOIS DEPARTMENT OF TRANSPORTATION PLANS FOR PROPOSED BRIDGE REPLACEMENT

INDEX OF SHEETS

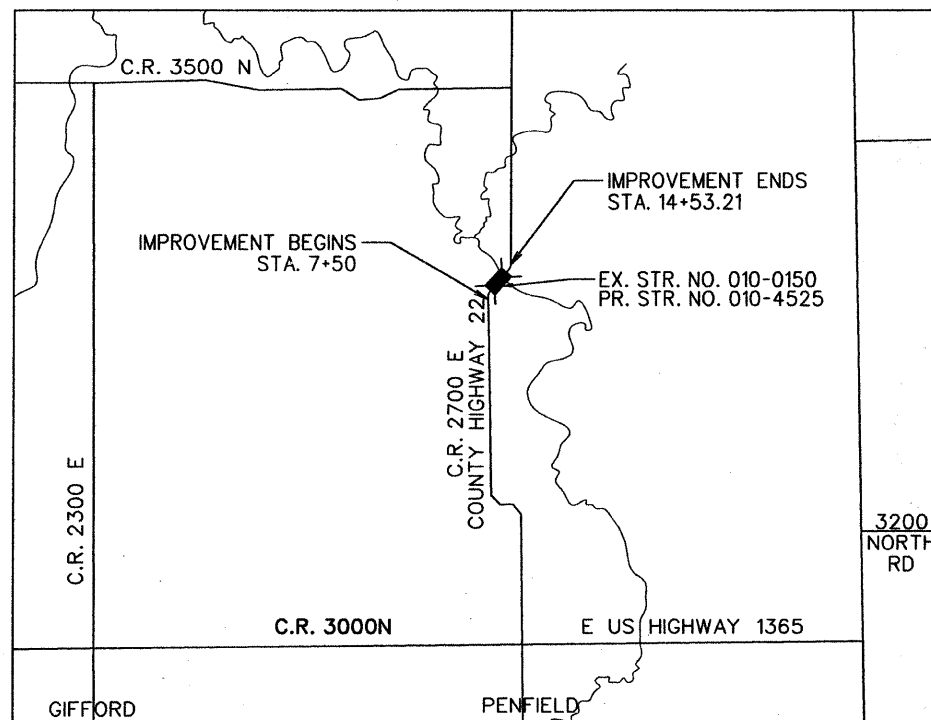
<u>SHEET NO.</u>	<u>DESCRIPTION</u>
1	COVER SHEET
2	GENERAL NOTES & TYPICAL SECTIONS
3	SUMMARY OF QUANTITIES
4	SCHEDULE OF QUANTITIES
5-6	TIE POINTS
7-8	PLAN AND PROFILE
9-10	EROSION CONTROL PLAN
11-17	BRIDGE PLANS
18-34	CROSS SECTIONS
35	DETAILS
36	PILING DETAILS



CHAMPAIGN COUNTY SECTION 05-00907-00-BR PROJECT NO. BRS-0515(105) JOB NO. C-95-329-08 STRUCTURE NO. 010-4525 C.H. 22 (F.A.S. 515) MAJOR BRIDGE PROGRAM & COUNTY BRIDGE FUNDS

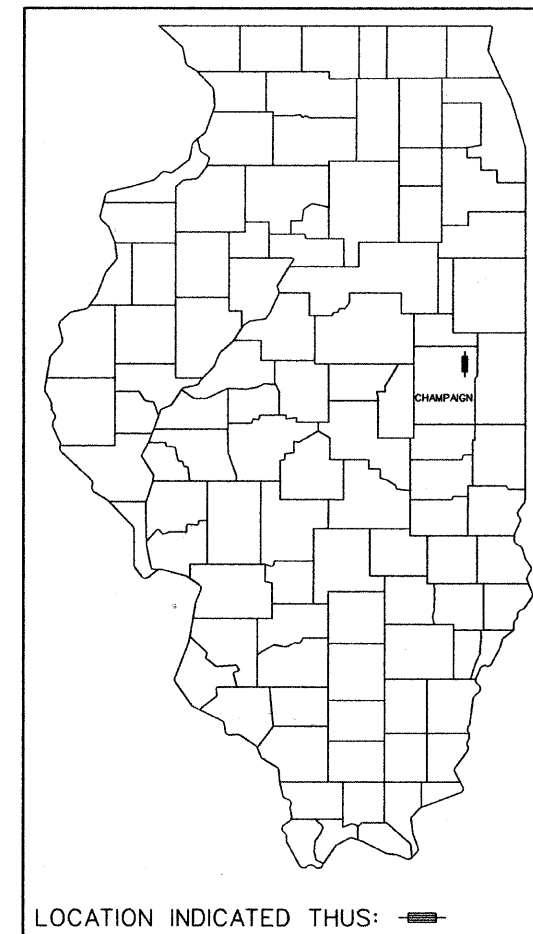
ILLINOIS DEPT. OF TRANSPORTATION
HIGHWAY STANDARDS

<u>STANDARD NO.</u>	<u>DESCRIPTION</u>
280001-04	TEMPORARY EROSION CONTROL SYSTEMS
515001-03	NAME PLATE FOR BRIDGES
630001-08	STEEL PLATE BEAM GUARDRAIL
780001-02	TYPICAL PAVEMENT MARKINGS
701901-01	TRAFFIC CONTROL DEVICES
BLR 21-8	TRAFFIC APPLICATION OF TRAFFIC CONTROL DEVICES ON RURAL LOCAL HIGHWAYS
BLR 23-3	TRAFFIC BARRIER TERMINAL TYPE 1
BLR 27-1	TRAFFIC BARRIER TERMINAL TYPE 5A

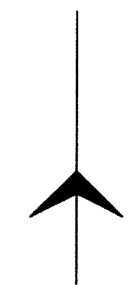


LOCATION MAP
NOT TO SCALE

NET LENGTH OF SECTION - 703.21 FEET - 0.133 MILES
FUNCTIONAL CLASS- RURAL COLLECTOR, ADT- 400



LOCATION INDICATED THUS:



APPROVED	<u>7-2</u> 20 <u>09</u>
PASSED	<u>7/22</u> 20 <u>09</u>
Released For Bid Based on Limited Review	<u>7/22</u> 20 <u>09</u>
STATE OF ILLINOIS DEPARTMENT OF TRANSPORTATION	

FOR JOINT UTILITY INFORMATION
CALL J.U.L.I.E. 1-800-892-0123



KEITH E. BRANDAU
ILLINOIS REGISTERED PROFESSIONAL ENGINEER NO. 062-44096
LICENSE EXPIRES 11-30-09

Sodemann and Associates, Inc.
340 NORTH NEIL STREET
POST OFFICE BOX 557
CHAMPAIGN, ILLINOIS 61824-0557
TEL 217 352-7688 FAX 217 352-7922
ENGINEERING / ANALYSIS / MANAGEMENT

