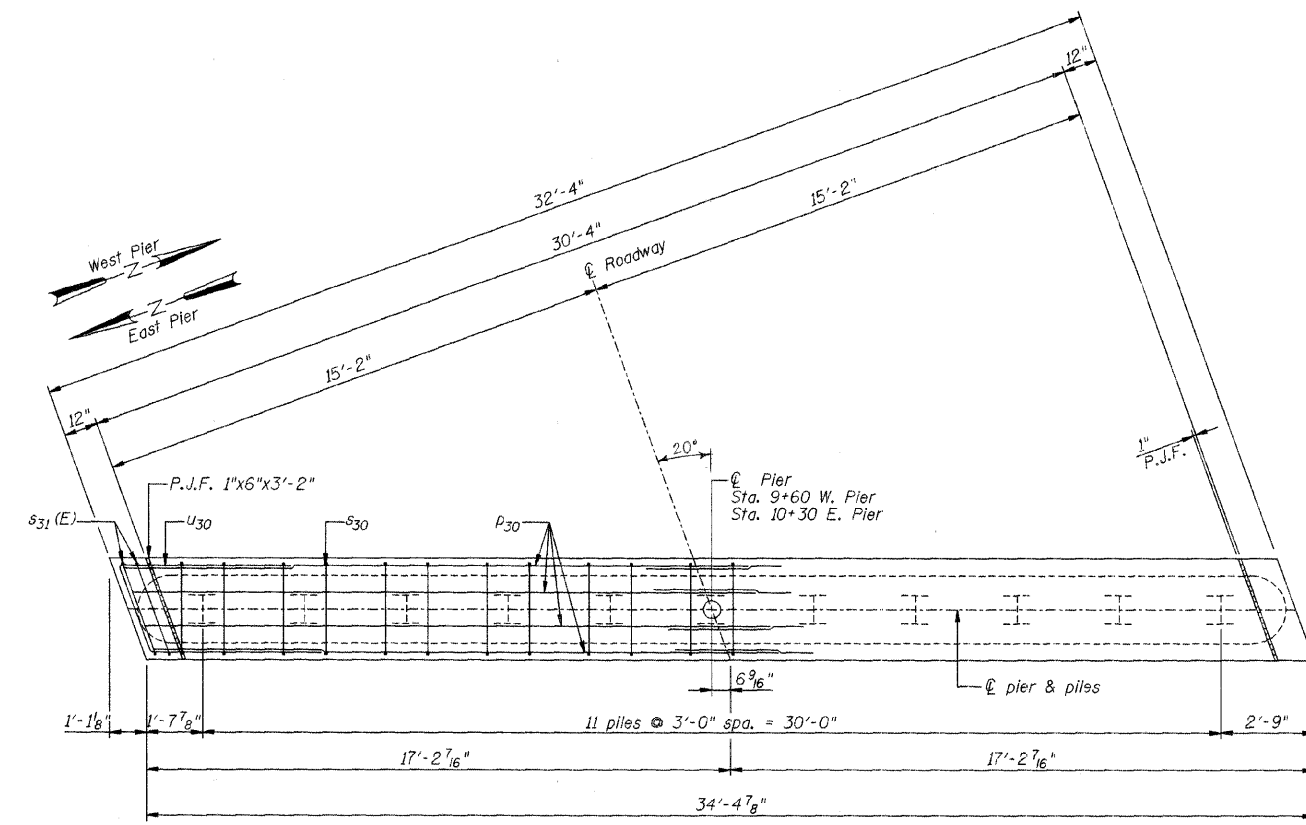


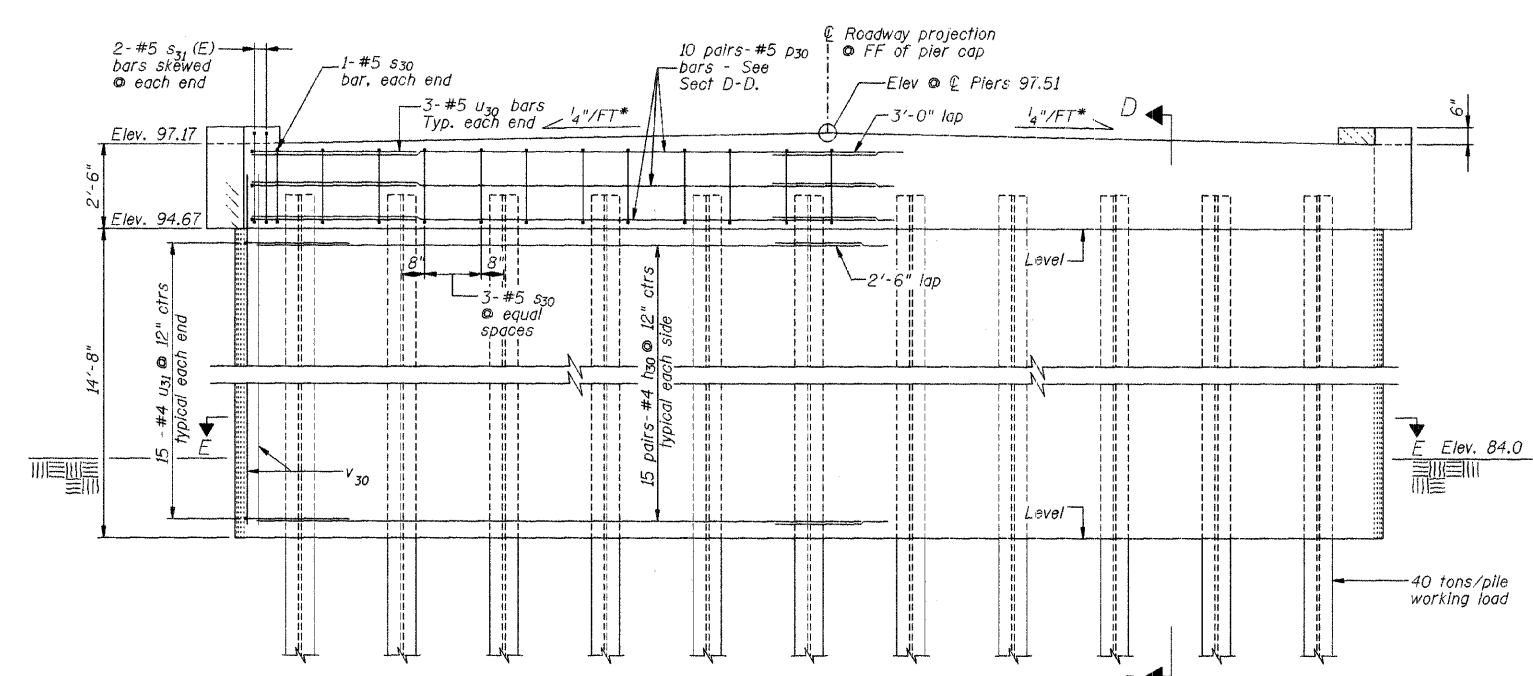
ROUTE NO.	SECTION	COUNTY	TOTAL SHEETS	SHEET NO.
FAS 496	*	Vermilion	18	10
FED. ROAD DIST. NO. 7		ILLINOIS	FED. AID PROJECT	

\*97-00141-00-BR

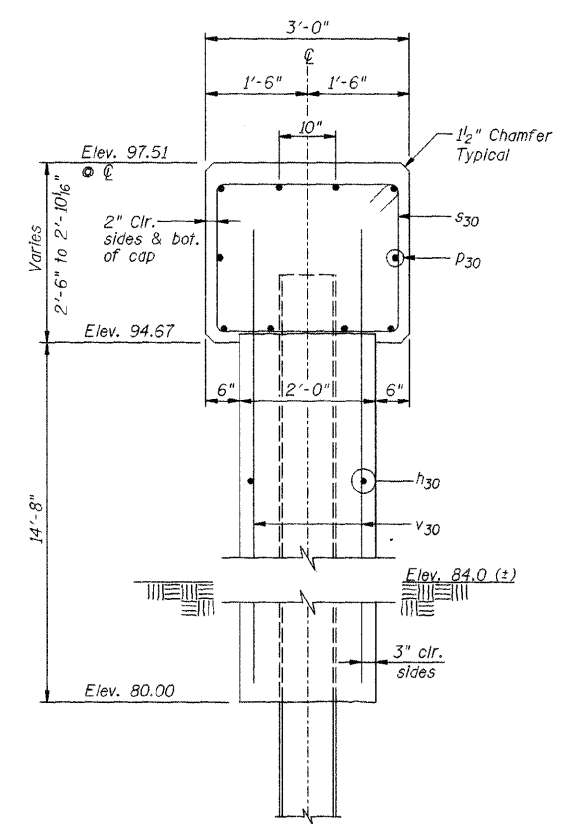


**PLAN**  
(Symmetrical about  $\text{\textcircled{C}}$  Pier)

NOTE: All edges shall have standard  $\frac{3}{4}$ " chamfer, except as noted.



**ELEVATION**  
Front Projection  
(Symmetrical about  $\text{\textcircled{C}}$  Roadway)  
\* Normal to Roadway



**SECTION D-D**  
(Perpendicular to  $\text{\textcircled{C}}$  of Pier)

DSGN	K.J. Hoffmann				
DR	K.J. Hoffmann				
CHK	J.R. Wolf				
APVD	J.A. Fraenhoffer	NO.	DATE	REVISION	BY

**FRAUENHÖFFER**  
Fraenhoffer and Associates, P.C. Consulting Engineers  
3002 Crossing Court Champaign, IL 61822 217-351-6268

<b>PIERS (SHEET 1 OF 2)</b>		SHEET	10
FAS 496 (C.H. 14) OVER MIDDLE BRANCH OF N. FORK		DWG NO.	97051oler.dgn
SECTION 97-00141-00-BR		DATE	APR 2009
VERMILION COUNTY		PROJ NO.	97051