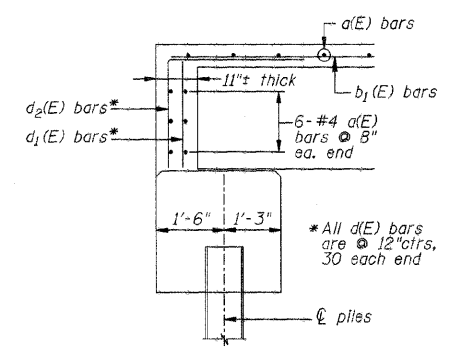
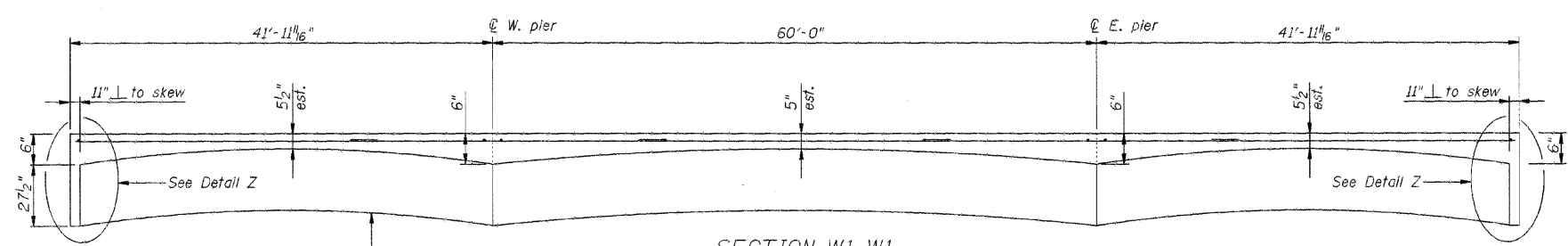


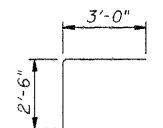
PLAN VIEW



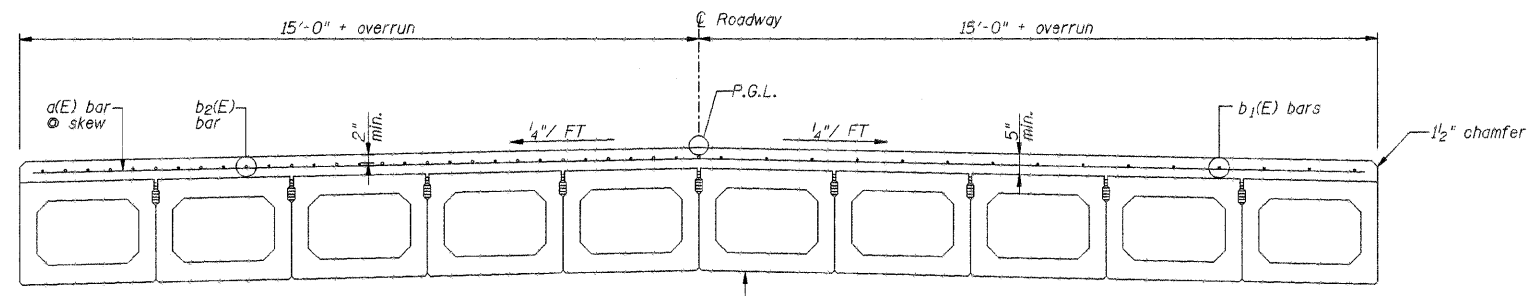
DETAIL Z
Cut perpendicular to skew.



SECTION W1-W1
(Exaggerated Vertical Scale)



BAR d₂(E)



SECTION W2-W2
Section through beams and wearing surface.

BILL OF MATERIAL				
Bar	No.	Size	Length	Shape
a (E)	156	# 4	31'-5"	—
b ₁ (E)	150	# 6	31'-0"	—
b ₂ (E)	58	# 6	10'-0"	—
d ₁ (E)	60	# 4	2'-6"	—
d ₂ (E)	60	# 4	5'-6"	┌
Concrete Superstructure			Cu. Yds.	80.7
Bridge Deck Grooving			Sq. Yds.	483
Protective Coat			Sq. Yds.	483
Reinforcement Bars Epoxy Coated			Lbs.	11,450

Notes : Reinforcement bars designated (E) shall be epoxy coated.
 Bars indicated thus "30 x 5 - #6 b etc..." indicates 30 lines of bars with 5 lengths per line.
 Concrete shall be Class BS.
 Prior to the placement of the concrete, the top surface of the beams shall be clean and free of foreign material.

DSGN	K.J. Hoffmann				
DR	K.J. Hoffmann				
CHK	J.R. Wolf				
APVD	J.A. Fraunhoffer	NO.	DATE	REVISION	BY

FRAUENHOFFER
 Fraunhoffer and Associates, P.C. Consulting Engineers
 3002 Crossing Court Champaign, Il. 61822 217-351-6268

CONCRETE WEARING SURFACE		SHEET 16
FAS 496 (C.H. 14) OVER MIDDLE BRANCH OF N. FORK		DWG NO. 97051-wrg.dgn
SEC. 97-00141-00-BR		DATE APR 2009
VERMILION COUNTY		PROJ NO. 97051