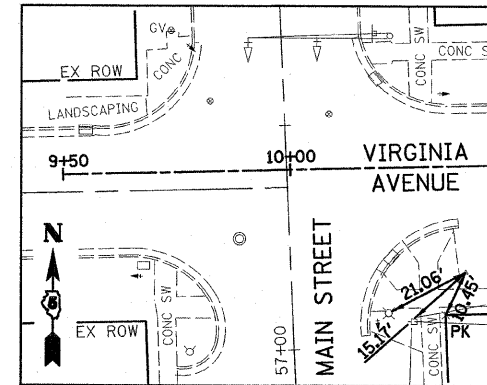


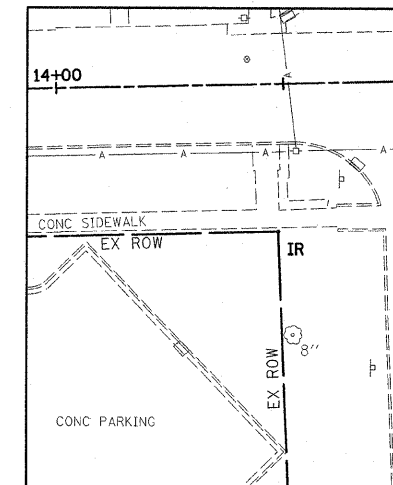
**GENERAL NOTES**

1. ANY REFERENCE TO A STANDARD IN THESE PLANS SHALL BE TAKEN TO MEAN THE LATEST EDITION OF THE CITED STANDARD.
2. ALL SAW CUTTING OF EXISTING PAVEMENT SHALL BE INCLUDED IN THE RESPECTIVE REMOVAL PAY ITEMS. A SAW CUT ALONG THE EDGES OF HOT-MIX ASPHALT SURFACE REMOVAL BUTT JOINT SHALL BE SAW CUT WITH SMOOTH STRAIGHT LINES INCLUDED IN THE HOT-MIX ASPHALT SURFACE REMOVAL BUTT JOINT UNIT COST.
3. THE EXISTING ROAD SIGNS THAT INTERFERE WITH THE CONSTRUCTION SHALL BE REMOVED BY THE TOWN OF NORMAL. THE CONTRACTOR SHALL GIVE THE TOWN 48 HOURS NOTICE (EXCLUSIVE OF WEEKENDS OR HOLIDAYS) BEFORE COMMENCING ACTIVITIES REQUIRING SIGN REMOVAL AND/OR RELOCATION. UNDER NO CIRCUMSTANCES SHALL THE CONTRACTOR REMOVE CITY SIGNS.
4. IT SHALL BE THE CONTRACTOR'S RESPONSIBILITY TO DETERMINE THE ACTUAL LOCATION OF ALL UNDERGROUND UTILITY FACILITIES. THE CONTRACTOR SHALL ALSO OBTAIN FROM THE RESPECTIVE UTILITY COMPANIES DETAILED INFORMATION RELATIVE TO THE LOCATION OF THEIR FACILITIES AND THE WORKING SCHEDULES OF THE UTILITY COMPANIES FOR THEIR MARKING OF THE EXACT LOCATIONS. THE CONTRACTOR SHALL COORDINATE CONSTRUCTION ACTIVITIES WITH UTILITY COMPANIES.
5. THE TOWN OF NORMAL SHALL PROVIDE ALL PERMANENT STREET SIGNAGE NOT SHOWN.
6. SEE THE PAVEMENT MARKING PLAN FOR PAVEMENT MARKING DETAILS.
7. THE CONTRACTOR SHALL BE RESPONSIBLE FOR PROTECTING UTILITY PROPERTY (ESPECIALLY THE 60" SANITARY SEWER) FROM CONSTRUCTION OPERATIONS AS OUTLINED IN ARTICLE 107.26 OF THE STANDARD SPECIFICATIONS. THE J.U.L.I.E. TELEPHONE NUMBER IS 1-800-892-0123. A MINIMUM OF 48 HOURS ADVANCE NOTICE IS REQUIRED. MEMBERS OF J.U.L.I.E. KNOWN TO BE WITHIN THE PROJECT AREA ARE:  

TOWN OF NORMAL	AMEREN I.P.
COMCAST CABLE COMPANY	NICOR
VERIZON	B.N.W.R.D.
8. A MINIMUM OF ONE OPEN LANE OF TRAFFIC MUST BE MAINTAINED ON MAIN STREET/ US RTE 51 BUSINESS AT ALL TIMES. MAIN STREET/ US RTE 51 BUSINESS MAY NOT BE CLOSED TO TRAFFIC OR DETOURED.
9. THE CONTRACTOR IS RESPONSIBLE FOR MAINTAINING DRAINAGE THROUGHOUT THE PROJECT. EXISTING INLETS/ MANHOLES TO BE REMOVED SHALL REMAIN IN PLACE AND ACTIVE UNTIL THE PROPOSED INLETS/ MANHOLES ARE CONSTRUCTED AND ACTIVATED TO PROVIDE SUITABLE DRAINAGE.



CONTROL TIE #1  
 "X" IN CONC  
 STA 10+38.13, 23.58' RT  
 N 10000.000  
 E 10000.000



CONTROL TIE #3  
 IRON ROD  
 STA 14+48.20, 33.03' RT  
 N 10000.358  
 E 10410.181

**STATE STANDARDS**

- |           |  |
|-----------|--|
| 000001-05 | STANDARD SYMBOLS ABBREVIATIONS AND PATTERNS                        |
| 280001-04 | TEMPORARY EROSION CONTROL SYSTEMS                                  |
| 420001-07 | PAVEMENT JOINTS  |
| 424001-05 | CURB RAMPS FOR SIDEWALKS   |
| 515001-03 | NAME PLATE FOR BRIDGES   |
| 602401-02 | MANHOLE TYPE A   |
| 602701-02 | MANHOLE STEPS  |
| 604001-03 | FRAME AND LIDS TYPE 1  |
| 606001-04 | CONCRETE CURB TYPE B AND COMBINATION CONCRETE CURB AND GUTTER      |
| 606401-01 | PAVED DITCH  |
| 664001-02 | CHAIN LINK FENCES  |
| 701001-02 | OFF ROAD OPERATIONS, 2L, 2W, MORE THAN 4.5 M (15') AWAY            |
| 701006-03 | OFF ROAD OPERATIONS, 2L, 2W, 15' TO 24" FROM PAVEMENT EDGE         |
| 701501-05 | URBAN LANE CLOSURE, 2L, 2W UNDIVIDED                               |
| 701601-06 | URBAN LANE CLOSURE, MULTILANE, 1W OR 2W WITH NONTRAVERSABLE MEDIAN |
| 701801-04 | LANE CLOSURE MULTILANE 1W OR 2W CROSSWALK OR SIDEWALK CLOSURE      |
| 701901-01 | TRAFFIC CONTROL DEVICES  |
| 720016-02 | MAST ARM MOUNTED STREET NAME SIGNS                                 |
| 780001-02 | TYPICAL PAVEMENT MARKINGS  |
| 805001-01 | ELECTRICAL SERVICE INSTALLATION DETAILS                            |
| 814001-02 | HANDHOLES  |
| 814006-02 | DOUBLE HANDHOLES   |
| 857001-01 | STANDARD PHASE DESIGNATION DIAGRAMS AND PHASE SEQUENCES            |
| 862001-01 | UNINTERRUPTABLE POWER SUPPLY (UPS)                                 |
| 873001-02 | TRAFFIC SIGNAL GROUNDING AND BONDING                               |
| 877001-04 | STEEL MAST ARM ASSEMBLY AND POLE 16' THROUGH 55'                   |
| 877011-04 | STEEL COMB. MAST ARM ASSEMBLY AND POLE 16' THROUGH 55'             |
| 878001-07 | CONCRETE FOUNDATION DETAILS  |
| 880006-01 | TRAFFIC SIGNAL MOUNTING DETAILS                                    |

**BENCHMARKS:**

1. "□" ON TOP OF EAST CONC. RAILING OF BRIDGE ON UNIVERSITY BETWEEN VIRGINIA AVE. & APPLE ST. ELEV. = 765.01 (BK. 2088-22)
2. TOP OF FIRE HYDRANT NORTHWEST CORNER OF VIRGINIA AVE. AND FRANKLIN ST. ELEV. = 772.80 (BK. 2088-22)

**UTILITY AGENCIES THAT RECEIVED PLANS**

	PRELIMINARY PLANS SENT	FINAL PLANS SENT
TOWN OF NORMAL ENGINEERING	JULY 1ST, 2009	JULY 22ND, 2009
TOWN OF NORMAL WATER DEPARTMENT	JULY 1ST, 2009	JULY 22ND, 2009
AMEREN ILLINOIS POWER	JULY 1ST, 2009	JULY 22ND, 2009
NICOR GAS	JULY 1ST, 2009	JULY 22ND, 2009
COMCAST	JULY 1ST, 2009	JULY 22ND, 2009
CORBELT ENERGY COMPANY	JULY 1ST, 2009	JULY 22ND, 2009
VERIZON	JULY 1ST, 2009	JULY 22ND, 2009
BNWRD	JULY 1ST, 2009	JULY 22ND, 2009

DESIGNED - JDA	REVISED -
DRAWN - DRR	REVISED -
CHECKED - PJM	REVISED -
DATE - 07/22/09	REVISED -

**TOWN OF NORMAL**

**GENERAL NOTES, CONTROL TIES AND BENCHMARKS**

SCALE: SHEET NO. 2 OF 52 SHEETS STA. TO STA.

**VIRGINIA AVENUE OVER SUGAR CREEK  
 SECTION 04-00226-00-BR  
 MCLEAN, COUNTY**

F.A.U.	SECTION	COUNTY	TOTAL SHEETS	SHEET NO.
6356	04-00226-00-BR	MCLEAN	52	2
S.N. 057-7834		CONTRACT NO. 91416		
FED. ROAD DIST. NO. ILLINOIS FED. AID PROJECT				