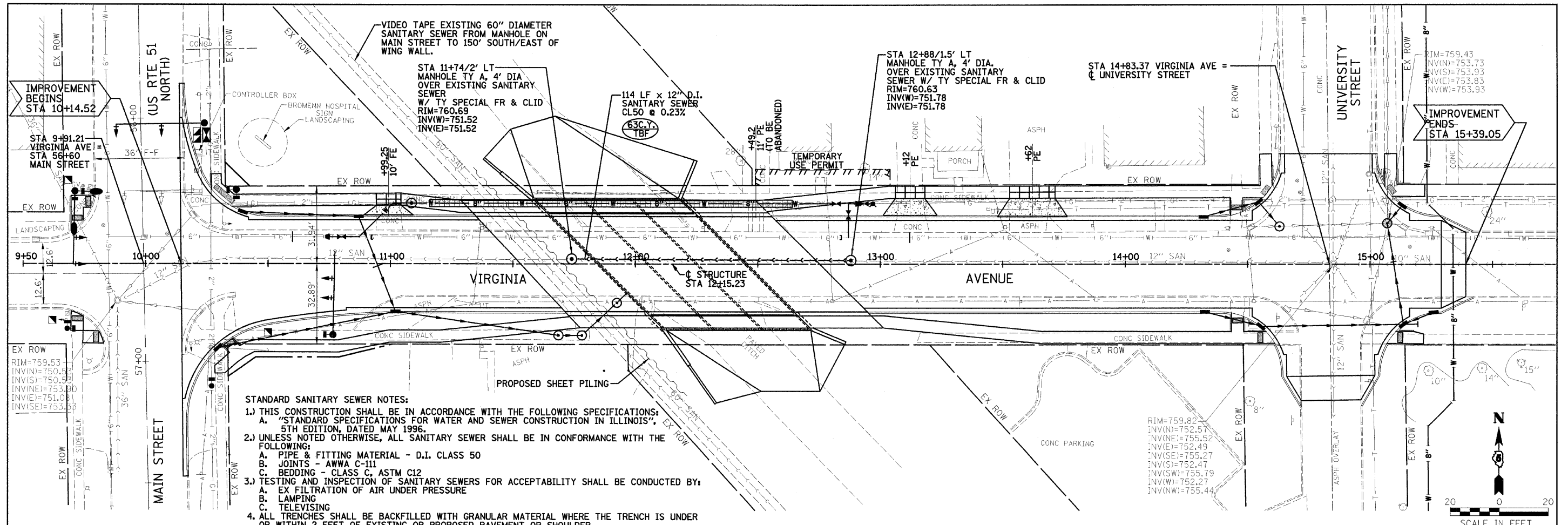


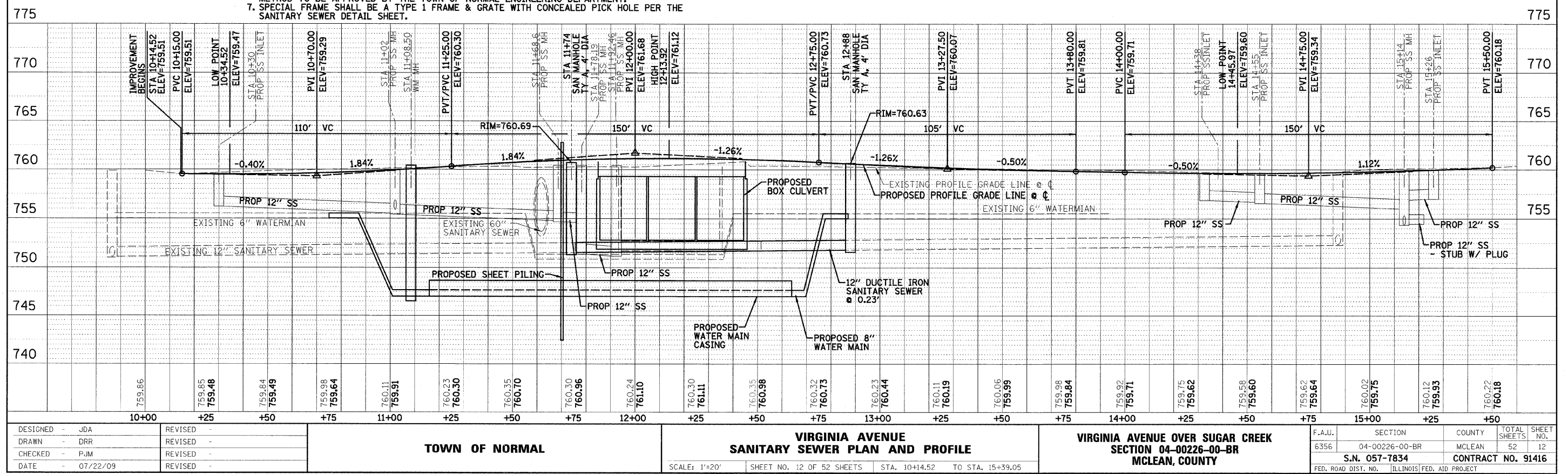
| | |
|-------------|------|
| PLAN | DATE |
| BY | |
| REVISIONS | |
| NO. DATE | |
| BY | |
| DESCRIPTION | |
| DATE | |

| | |
|-------------|------|
| PROFILE | DATE |
| BY | |
| REVISIONS | |
| NO. DATE | |
| BY | |
| DESCRIPTION | |
| DATE | |

FILE: DATE:



- STANDARD SANITARY SEWER NOTES:**
- THIS CONSTRUCTION SHALL BE IN ACCORDANCE WITH THE FOLLOWING SPECIFICATIONS:
 - "STANDARD SPECIFICATIONS FOR WATER AND SEWER CONSTRUCTION IN ILLINOIS", 5TH EDITION, DATED MAY 1996.
 - UNLESS NOTED OTHERWISE, ALL SANITARY SEWER SHALL BE IN CONFORMANCE WITH THE FOLLOWING:
 - PIPE & FITTING MATERIAL - D.I. CLASS 50
 - JOINTS - AWWA C-111
 - BEDDING - CLASS C, ASTM C12
 - TESTING AND INSPECTION OF SANITARY SEWERS FOR ACCEPTABILITY SHALL BE CONDUCTED BY:
 - EX FILTRATION OF AIR UNDER PRESSURE
 - LAMPING
 - TELEVISION
 - ALL TRENCHES SHALL BE BACKFILLED WITH GRANULAR MATERIAL WHERE THE TRENCH IS UNDER OR WITHIN 2 FEET OF EXISTING OR PROPOSED PAVEMENT OR SHOULDER.
 - ALL SANITARY MANHOLES SHALL BE 4 FEET IN DIAMETER.
 - CONTRACTOR TO MAINTAIN FLOW FROM EXISTING SANITARY SEWER AT ALL TIMES. DIVERSION METHOD TO BE APPROVED BY THE TOWN OF NORMAL ENGINEERING DEPARTMENT.
 - SPECIAL FRAME SHALL BE A TYPE 1 FRAME & GRATE WITH CONCEALED PICK HOLE PER THE SANITARY SEWER DETAIL SHEET.



| | | | | | | | | | | | | | | | | | |
|-----------------|-----------|-----------------------|--|--|--|--|--|--|--|--|--|--|--|--|--|--|--|
| DESIGNED - JDA | REVISED - | TOWN OF NORMAL | VIRGINIA AVENUE SANITARY SEWER PLAN AND PROFILE | | | | | | | | | | VIRGINIA AVENUE OVER SUGAR CREEK SECTION 04-00226-00-BR MCLEAN COUNTY | | | | |
| DRAWN - DRR | REVISED - | | SCALE: 1"=20' SHEET NO. 12 OF 52 SHEETS STA. 10+14.52 TO STA. 15+39.05 | | | | | | | | | | | | | | |
| CHECKED - PJM | REVISED - | | F.A.U. SECTION COUNTY TOTAL SHEETS SHEET NO. 6356 04-00226-00-BR MCLEAN 52 12 S.N. 057-7834 CONTRACT NO. 91416 | | | | | | | | | | | | | | |
| DATE - 07/22/09 | REVISED - | | FED. ROAD DIST. NO. ILLINOIS FED. AID PROJECT REVISED 07/08/09 DRR 24-6082 | | | | | | | | | | | | | | |