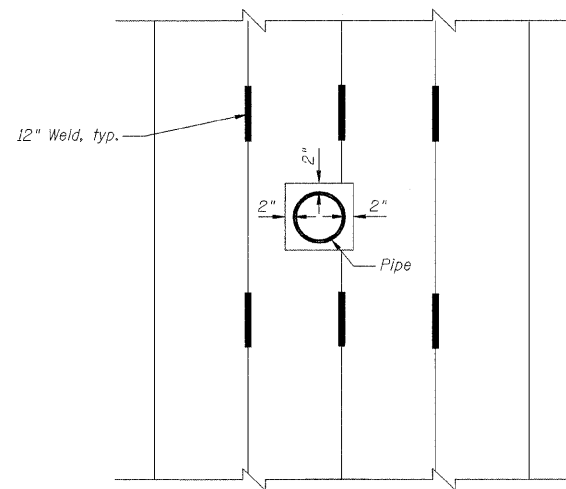


**TEMPORARY SHEET PILING ELEVATION**



**SHEET PILING DETAIL AROUND PIPES**

**TEMPORARY SHEET PILING DATA**

Top Elevation = 759.5'  
 Tip Elevation = 745.0' within limits of box culvert  
 Tip Elevation = 740.5' within limits of retaining wall  
 Min. Section Modulus = 7.3 in<sup>3</sup>/ft.  
 Area = 2860 ft<sup>2</sup>

**NOTES:**

- 1.) Contractor to locate utilities, especially the 60" sanitary sewer, before driving sheet piling.
- 2.) The unit price bid for Temporary Sheet Piling shall also include any "Block Outs" or cutting necessary for utilities.
- 3.) See Sheet C1 for temporary sheet piling locations.

DESIGNED - SDH	REVISED -
DRAWN - JWK	REVISED -
CHECKED - MSW	REVISED -
DATE - 07/22/2009	REVISED -

**TOWN OF NORMAL**

**TEMPORARY SHEET PILING DETAIL**

**VIRGINIA AVENUE OVER SUGAR CREEK  
 SECTION 04-00226-00-BR  
 MCLEAN COUNTY**

F.A.J.	SECTION	COUNTY	TOTAL SHEETS	SHEET NO.
6366	04-00226-00-BR	MCLEAN	52	24
S.N. 057-7834		CONTRACT NO. 91416		
FED. ROAD DIST. NO.		ILLINOIS FED. AID PROJECT		