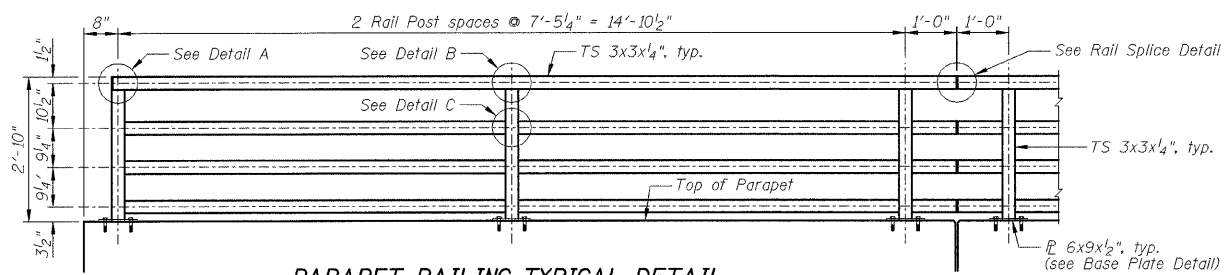
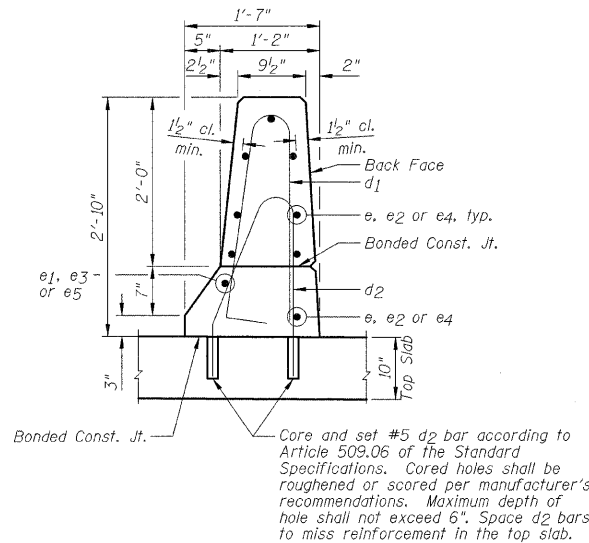


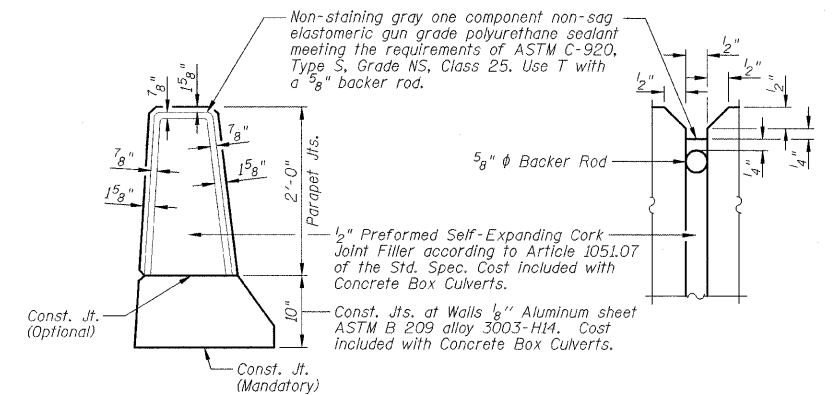
INSIDE ELEVATION VIEW



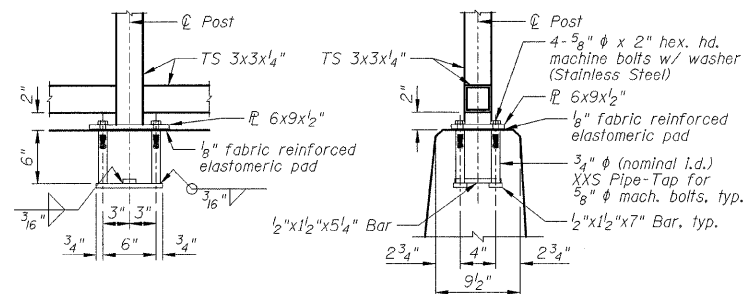
PARAPET RAILING TYPICAL DETAIL



SECTION THRU PARAPET

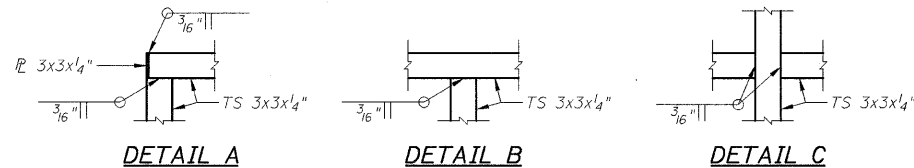


PARAPET JOINT DETAILS



ANCHOR BOLT DETAILS

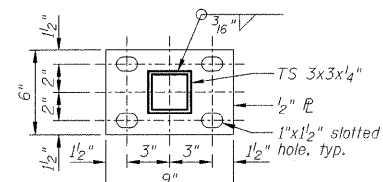
In lieu of the cast-in-place anchor device shown, the Contractor has the option of drilling and setting 5/8" diameter anchor rods according to Article 509.06 of the Standard Specifications. Embedment shall be according to the manufacturer's specifications.



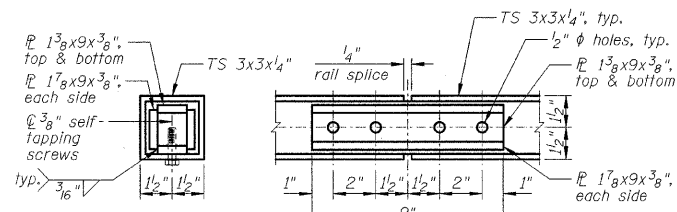
DETAIL A

DETAIL B

DETAIL C



BASE PLATE DETAIL



RAIL SPLICE DETAIL

NOTE:

All posts, railing, splices, anchor devices, and bent plates shall be painted using the Shop and Field Applied Paint System or the Shop Applied Point System. Color will be chosen by the Owner.

| | |
|-------------------|-----------|
| DESIGNED - SDH | REVISED - |
| DRAWN - JWK | REVISED - |
| CHECKED - MSW | REVISED - |
| DATE - 07/22/2009 | REVISED - |

TOWN OF NORMAL

PARAPET ELEVATION, SECTION AND DETAIL

**VIRGINIA AVENUE OVER SUGAR CREEK
SECTION 04-00226-00-BR
MCLEAN COUNTY**

| | | | | |
|---------------------|----------------|---------------------------|--------------|-----------|
| F.A.U. | SECTION | COUNTY | TOTAL SHEETS | SHEET NO. |
| 6366 | 04-00226-00-BR | MCLEAN | 52 | 31 |
| S.N. 057-7834 | | CONTRACT NO. 91416 | | |
| FED. ROAD DIST. NO. | | ILLINOIS FED. AID PROJECT | | |

SCALE: SHEET NO. C10 OF 23 SHEETS STA. TO STA.