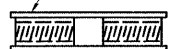


ROLLED THREAD DOWEL BAR



**** ONE PIECE**

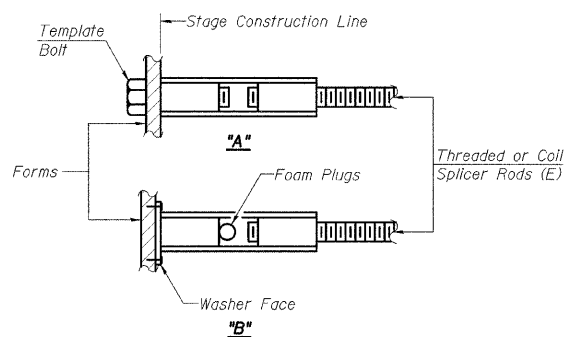
Wire Connector



WELDED SECTIONS

BAR SPLICER ASSEMBLY ALTERNATIVES

**Heavy Hex Nuts conforming to ASTM A 563, Grade C, D or DH may be used.



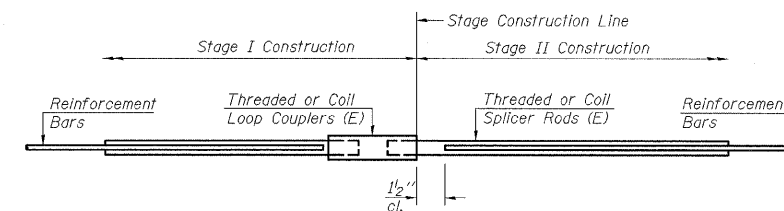
INSTALLATION AND SETTING METHODS

"A" : Set bar splicer assembly by means of a template bolt.
 "B" : Set bar splicer assembly by nailing to wood forms or cementing to steel forms.
 (E) : Indicates epoxy coating.

NOTES
 Bar splicer assemblies shall be of an approved type and shall develop in tension at least 125 percent of the yield strength of the lapped reinforcement bars.
 Splicer rods shall be of minimum 60 ksi yield strength, threaded or coiled full length.
 All reinforcement bars shall be lapped and tied to the splicer rods or dowel bars.
 Bar splicer assemblies shall be epoxy coated according to the requirements for reinforcement bars.
 Other systems of similar design may be submitted to the Engineer for approval. Approval shall be based on certified test results from an approved testing laboratory that the proposed bar splicer assembly satisfies the following requirements:

- ① Minimum Capacity = $1.25 \times f_y \times A_s$
 (Tension in kips)
 - ② Minimum *Pull-out Strength = $0.66 \times f_y \times A_s$
 (Tension in kips)
- Where f_y = Yield strength of lapped reinforcement bars in ksi.
 A_s = Tensile stress area of lapped reinforcement bars.
 * = 28 day concrete.

BAR SPLICER ASSEMBLIES			
Bar Size to be Spliced	Splicer Rod or Dowel Bar Length	Strength Requirements	
		Min. Capacity kips - tension	Min. Pull-Out Strength kips - tension
#4	1'-8"	14.7	7.9
#5	2'-2"	23.0	12.3
#6	2'-7"	33.1	17.4
#7	3'-5"	45.1	23.8
#8	4'-6"	58.9	31.3
#9	5'-9"	75.0	39.6
#10	7'-3"	95.0	50.3
#11	9'-0"	117.4	61.8



STANDARD

Bar Size	No. Assemblies Required	Location
#5	132	Top Slab

DESIGNED - SDH	REVISED -
DRAWN - JWK	REVISED -
CHECKED - MSW	REVISED -
DATE - 07/22/2009	REVISED -

TOWN OF NORMAL	
-----------------------	--

BAR SPLICER ASSEMBLY DETAILS	
SCALE:	SHEET NO. C22 OF 23 SHEETS STA. TO STA.

VIRGINIA AVENUE OVER SUGAR CREEK	
SECTION 04-00226-00-BR	
MCCLEAN COUNTY	

F.A.J.	SECTION	COUNTY	TOTAL SHEETS	SHEET NO.
6366	04-00226-00-BR	MCCLEAN	52	43
S.N. 057-7834		CONTRACT NO. 91416		
FED. ROAD DIST. NO.		ILLINOIS FED. AID PROJECT		