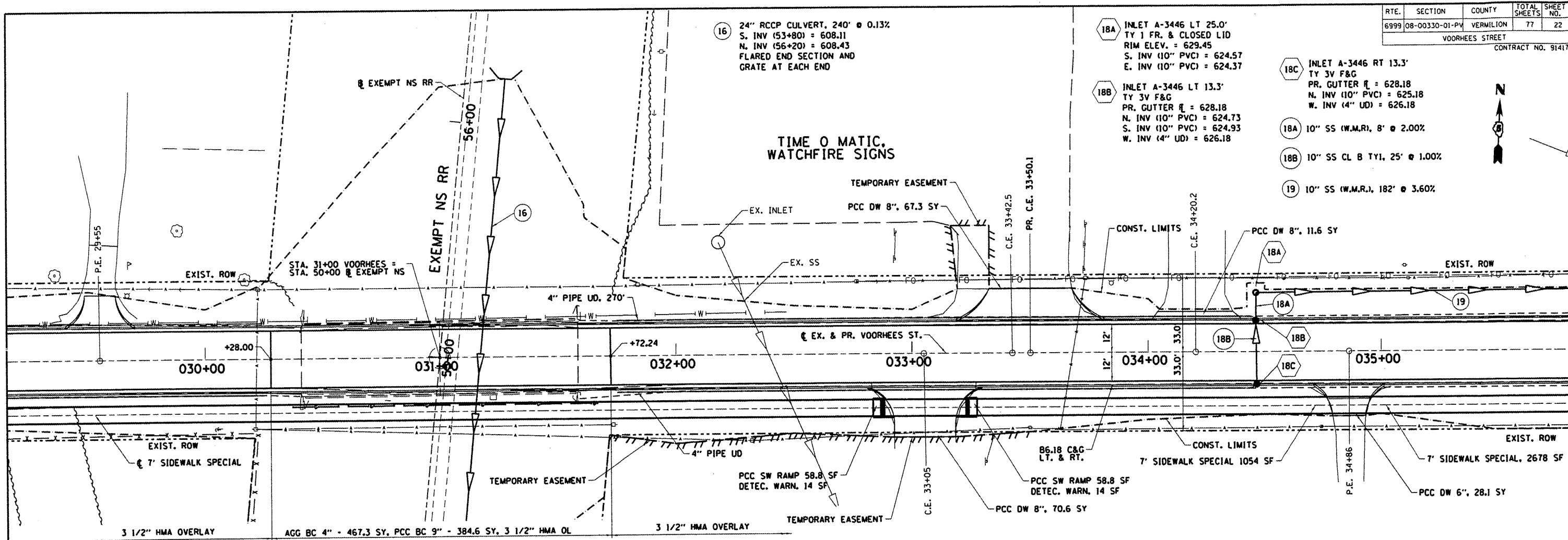


RTE.	SECTION	COUNTY	TOTAL SHEETS	SHEET NO.
6999	08-00330-01-PV	VERMILION	77	22

VOORHEES STREET  
CONTRACT NO. 91417



16 24" RCCP CULVERT, 240' @ 0.13%  
S. INV (53+80) = 608.11  
N. INV (56+20) = 608.43  
FLARED END SECTION AND  
GRATE AT EACH END

18A INLET A-3446 LT 25.0'  
TY 1 FR. & CLOSED LID  
RIM ELEV. = 629.45  
S. INV (10" PVC) = 624.57  
E. INV (10" PVC) = 624.37

18C INLET A-3446 RT 13.3'  
TY 3V F&G  
PR. GUTTER  $\ell$  = 628.18  
N. INV (10" PVC) = 625.18  
W. INV (4" UD) = 626.18

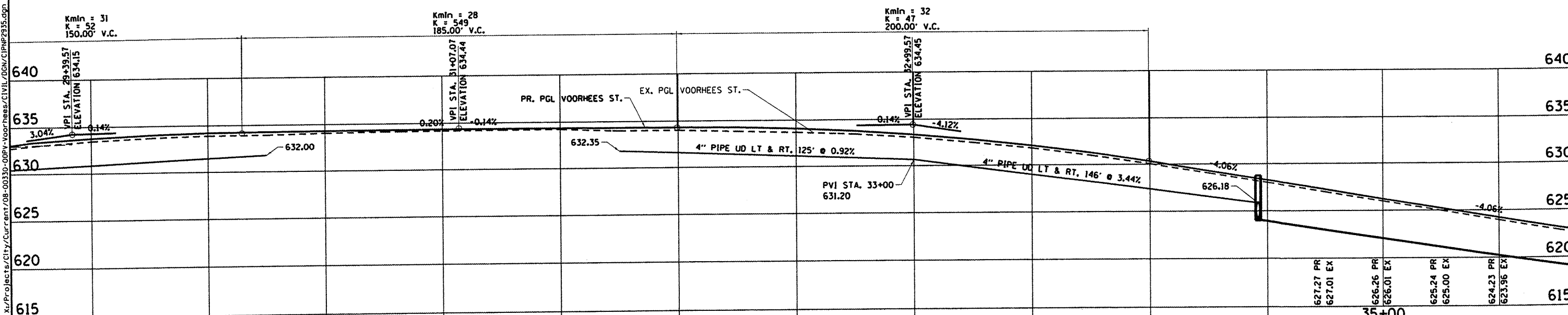
18A 10" SS (W.M.R.), 8' @ 2.00%

18B 10" SS CL B TY1, 25' @ 1.00%

19 10" SS (W.M.R.), 182' @ 3.60%

TIME O MATIC.  
WATCHFIRE SIGNS

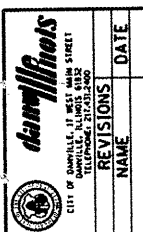
SPIRIT SHOP



REVISIONS	NAME	DATE
605	633.76 PR	
	633.44 EX	
	634.05 PR	
	633.72 EX	
	634.21 PR	
	633.90 EX	
	634.27 PR	
	633.93 EX	
	634.31 PR	
	634.08 EX	
	634.34 PR	
	634.17 EX	
	634.36 PR	
	634.19 EX	
	634.36 PR	
	634.21 EX	
	634.36 PR	
	634.24 EX	
	634.34 PR	
	634.02 EX	
	634.31 PR	
	634.02 EX	
	634.28 PR	
	633.86 EX	
	634.11 PR	
	633.71 EX	
	633.81 PR	
	633.47 EX	
	633.38 PR	
	633.09 EX	
	632.81 PR	
	632.48 EX	
	632.11 PR	
	631.82 EX	
	631.28 PR	
	630.98 EX	
	630.31 PR	
	630.05 EX	
	629.30 PR	
	629.06 EX	
	628.29 PR	
	628.03 EX	

DEPARTMENT OF ENGINEERING  
DANVILLE, IL. R. DAVID SCHNELLE, CITY ENGINEER  
VOORHEES ST IMPROVEMENT PHASE I  
PROPOSED PLAN & PROFILE  
STA. 29+00 TO STA. 35+00

SCALE: 1:20  
DATE: 7/24/2009  
DRAWN BY: SOC  
CHECKED BY: RDS



X:\Projects\City\Current\08-00330-00PV-Voorhees\CIVIL\DGN\CIPN2935.dgn