

CONTRACT NO. 91421

FAP RTE	SECTION	COUNTY	TOTAL SHEETS	SHEET NO.
**	*	PIATT	53	1
STA.		TO STA.		
FED. ROAD DIST. NO.		ILLINOIS FED. AID PROJECT		
*08-00115-01-RS		**FAS 535		

STATE OF ILLINOIS
DEPARTMENT OF TRANSPORTATION
DIVISION OF HIGHWAYS

PLANS FOR PROPOSED ROADWAY IMPROVEMENTS

INDEX OF SHEETS

SHEET NO.	DESCRIPTION
1.	COVER SHEET
2.	GENERAL NOTES AND LEGEND
3.	SUMMARY OF QUANTITIES
4.-5.	TYPICAL SECTIONS
6.-8.	SCHEDULES OF QUANTITIES
9.	TIES & BENCHMARKS
10.-17.	FAS 535 PLAN AND PROFILE
18.-21.	FAS 535 EROSION CONTROL AND DRAINAGE PLAN
22.-24.	MISCELLANEOUS DETAILS
25.	FIELD TILE DETAILS
26.	BOX CULVERT EXTENSION
27.-53.	FAS 535 CROSS SECTIONS

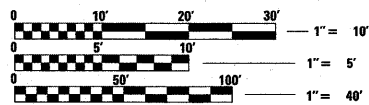
STANDARDS (BEING UTILIZED)

NUMBER	DESCRIPTION
000001-05	STANDARD SYMBOLS, ABBREVIATIONS AND PATTERNS
001001-02	AREAS OF REINFORCEMENT BARS
001006	DECIMAL OF AN INCH AND OF A FOOT
280001-04	TEMPORARY EROSION CONTROL SYSTEMS
542401-01	METAL END SECTION FOR PIPE CULVERTS
542406-01	METAL END SECTION FOR PIPE ARCHES
602301-02	INLET, TYPE A
602306-02	INLET, TYPE B
602601-02	PRECAST REINFORCED CONCRETE FLAT SLAB TOP
604036-02	GRATE, TYPE 8
606101-04	TYPE A GUTTER (INLET, OUTLET, AND ENTRANCE)
701001-02	OFF-ROAD OPERATIONS, 2L, 2W, MORE THAN 4.5m (15') AWAY
701006-03	OFF-ROAD OPERATIONS, 2L, 2W, 4.5m (15') TO 600mm (24") FROM PAVEMENT EDGE
701011-02	OFF-ROAD MOVING OPERATIONS, 2L, 2W, DAY ONLY
701021-03	LANE CLOSURE, 2L, 2W, DAY ONLY, FOR SPEEDS > 45 MPH
701301-03	LANE CLOSURE, 2L, 2W, SHORT TIME OPERATIONS
701306-02	LANE CLOSURE, 2L, 2W, SLOW MOVING OPERATIONS DAY ONLY, FOR SPEEDS > 45 MPH
701311-03	LANE CLOSURE, 2L, 2W, MOVING OPERATIONS - DAY ONLY
701422-02	LANE CLOSURE, MULTILANE, FOR SPEEDS > 45 MPH TO 55 MPH
701901-01	TRAFFIC CONTROL DEVICES
780001-02	TYPICAL PAVEMENT MARKINGS
781001-03	TYPICAL APPLICATIONS RAISED REFLECTIVE PAVEMENT MARKERS
BLR24-2	MAILBOX TURNOUT FOR LOCAL ROADS

SCALES

SHEET TYPES	SCALE
PLAN	1"=40'
PROFILE HORIZONTAL	1"=40'
PROFILE VERTICAL	1"=5'
CROSS SECTION HORIZONTAL	1"=10'
CROSS SECTION VERTICAL	1"=5'

ENGLISH RATIOS



FULL SIZE PLANS HAVE BEEN PREPARED USING STANDARD ENGINEERING SCALES. REDUCED SIZED PLANS WILL NOT CONFORM TO STANDARD SCALES. IN MAKING MEASUREMENTS ON REDUCED PLANS, THE ABOVE SCALES MAY BE USED.

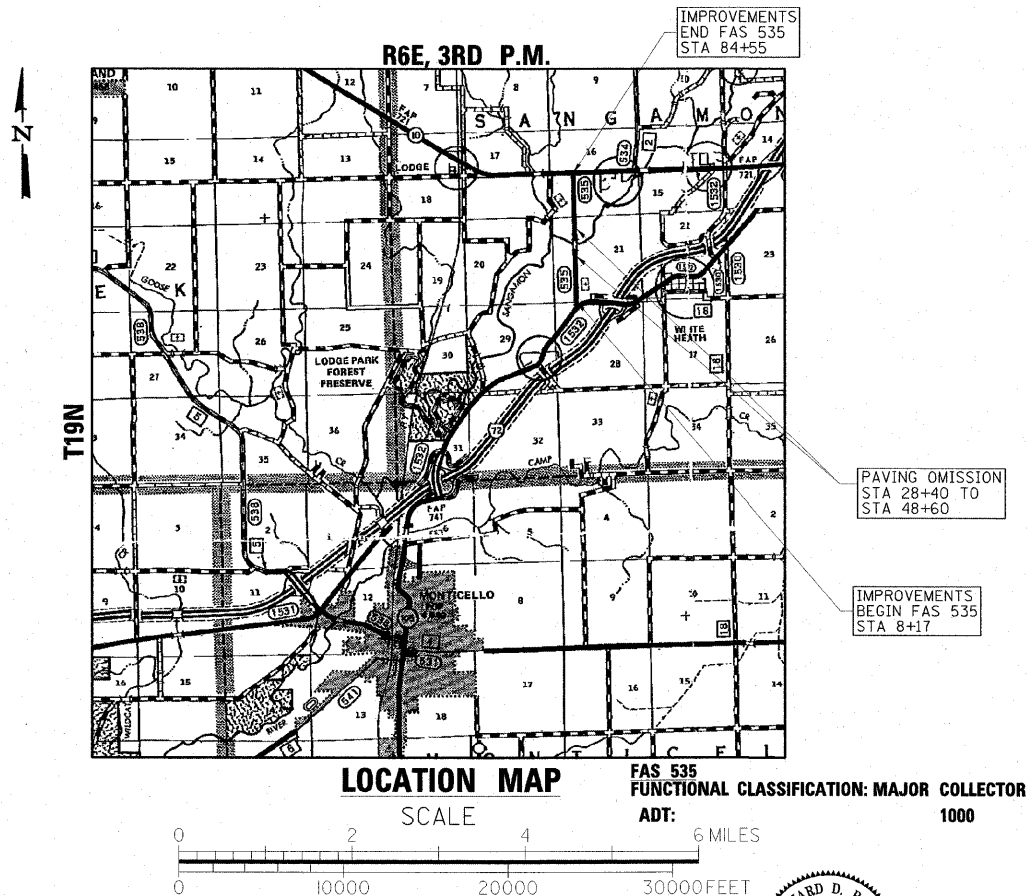
J.U.L.I.E.
JOINT UTILITY LOCATION INFORMATION FOR EXCAVATION
1-800-892-0123

PIATT COUNTY HIGHWAY DEPARTMENT
(217) 762-9481

CONTRACT NO. 91421



**FAS 535 (SHADY REST ROAD)
SECTION 08-00115-01-RS
RESURFACING
PIATT COUNTY
C-95-328-08
PROJECT NO. ARA-0535(102)**



GROSS LENGTH = 7638 FT. = 1.44 MI.
NET LENGTH = 5618 FT. = 1.06 MI.



Richard D. Payne
DATE: 07/13/09
ILLINOIS PROFESSIONAL LICENSE NO. 37421
(EXPIRATION DATE: 11-30-09)



LOCATION OF SECTION INDICATED THUS: [Black Box]

APPROVED *July 14* 2009
COUNTY ENGINEER

PASSED *8/5* 2009
DISTRICT FIVE ENGINEER OF LOCAL ROADS & STREETS

RELEASED FOR BID
BASED ON LIMITED REVIEW *8-5* 2009
DEPUTY DIRECTOR OF HIGHWAYS, REGION THREE ENGINEER

STATE OF ILLINOIS
DEPARTMENT OF TRANSPORTATION

**PRINTED BY THE AUTHORITY
OF THE STATE OF ILLINOIS**