

F.A.S. RTE.	SECTION	COUNTY	TOTAL SHEETS	SHEET NO.
543	09-00025-01-BR	DEWITT	17	1
		ILLINOIS	CONTRACT NO. 91423	

STATE OF ILLINOIS
DEPARTMENT OF TRANSPORTATION
DIVISION OF HIGHWAYS

PLANS FOR PROPOSED BRIDGE REHABILITATION

F.A.S. 543 - CH 10 (PARNELL ROAD)
DEWITT COUNTY
SECTION 09-00025-01-BR
PROJECT NO. ARA-0543(105)
JOB NO. C-95-344-09

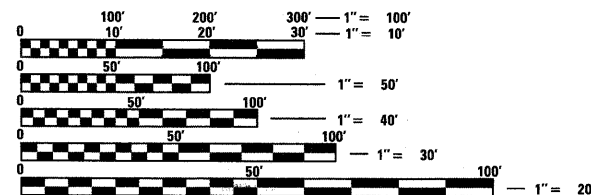


INDEX OF SHEETS

- 1 COVER SHEET
- 2 GENERAL NOTES AND SUMMARY OF QUANTITIES
- 3 EXISTING AND PROPOSED TYPICAL SECTIONS
- 4-5 DETAILS
- 6 PLAN AND PROFILE
- 7-17 BRIDGE PLANS

STANDARDS

- 000001-05 STANDARD SYMBOLS, ABBREVIATION & PATTERNS
- 280001-04 TEMPORARY EROSION CONTROL SYSTEMS
- 515001-03 NAME PLATE FOR BRIDGES
- 601001-03 SUB-SURFACE DRAINS
- 601101-01 CONCRETE HEADWALL FOR PIPE DRAIN
- 630001-08 STEEL PLATE BEAM GUARDRAIL
- 630301-05 SHOULDER WIDENING FOR TYPE 1 (SPECIAL) GUARDRAIL TERMINALS
- 631032-04 TRAFFIC BARRIER TERMINAL, TYPE 6A
- 635006-03 REFLECTOR AND TERMINAL MARKER PLACEMENT
- 701901-01 TRAFFIC CONTROL DEVICES
- 780001-02 TYPICAL PAVEMENT MARKINGS
- BLR 21-8 TYPICAL APPLICATION FOR TRAFFIC CONTROL DEVICES FOR CONSTRUCTION ON RURAL LOCAL HIGHWAYS



FULL SIZE PLANS HAVE BEEN PREPARED USING STANDARD ENGINEERING SCALES. REDUCED SIZED PLANS WILL NOT CONFORM TO STANDARD SCALES. IN MAKING MEASUREMENTS ON REDUCED PLANS, THE ABOVE SCALES MAY BE USED.

J.U.L.I.E.
JOINT UTILITY LOCATION INFORMATION FOR EXCAVATION
1-800-892-0123
OR 811

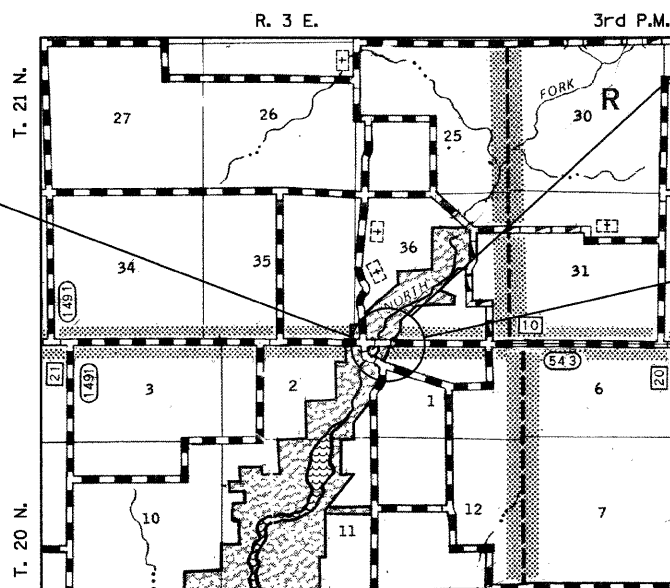
IMPROVEMENT BEGINS
STA. 477 + 06.00

UTILITY COMPANIES

VERIZON NORTH INC.
1312 E. EMPIRE STREET
BLOOMINGTON, IL 61701
PHONE: (309) 663-3156
CONTACT: MIKE HOPE

CORN BELT ELECTRIC CO-OP
1502 MORRISSEY DRIVE
BLOOMINGTON, IL 61761

MCCLEOD USA
PHONE: (800) 500-3453



FUNCTIONAL CLASSIFICATION = RURAL MAJOR COLLECTOR
2010 ADT = 510
DESIGN SPEED = 50 MPH

LOCATION MAP



GROSS LENGTH = 524 FT. = 0.099 MILE
NET LENGTH = 524 FT. = 0.099 MILE

STA. 479+54.45 SUPERSTRUCTURE REPLACEMENT
PRECAST PRESTRESSED CONCRETE DECK BEAM
BRIDGE, CONCRETE WEARING SURFACE. FOUR SPANS
AT 233'-11" BK.-TO-BK. ABUTMENTS.
30'-0" OUT-TO-OUT, 16° LT. FWD, SKEW
SN 020-3900

IMPROVEMENT ENDS
STA. 482 + 30.00



James A. Colbrook Jr.
8-19-09
Exp. 11-30-09

APPROVED August 19, 20 09

Craig Fitz
COUNTY ENGINEER

PASSED 8/26 20 09

Dan A. Sal
DISTRICT FIVE ENGINEER OF
LOCAL ROADS AND STREETS

Released For Bid Based on Limited Review 8/26 20 09

Joseph E. L...
DEPUTY DIRECTOR OF HIGHWAYS
REGION THREE ENGINEER

STATE OF ILLINOIS
DEPARTMENT OF TRANSPORTATION

**PRINTED BY THE AUTHORITY
OF THE STATE OF ILLINOIS**

WHKS & CO.
7018 KINGSMILL CT.,
SPRINGFIELD, IL
(217) 483-9457
ENGINEERING DESIGN FIRM #184001036

PROJECT ENGINEER: JAMES A. COLBROOK JR, P.E.
PROJECT MANAGER: CORY W. CHAMBERLAIN, P.E., S.E.

CONTRACT NO. 91423