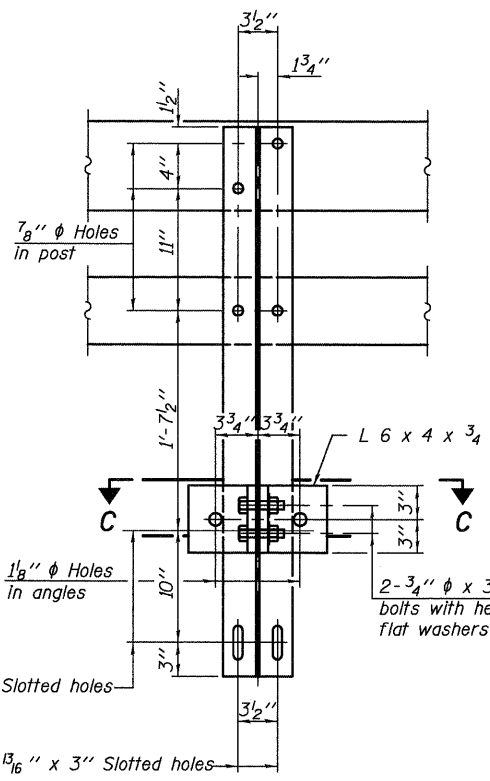
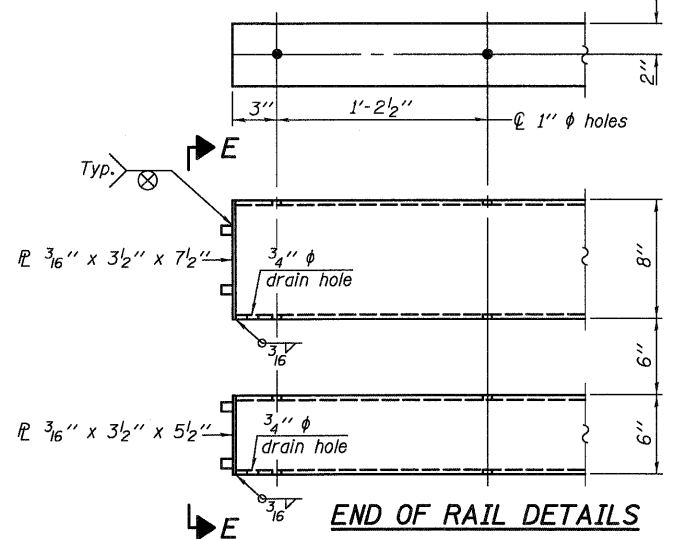
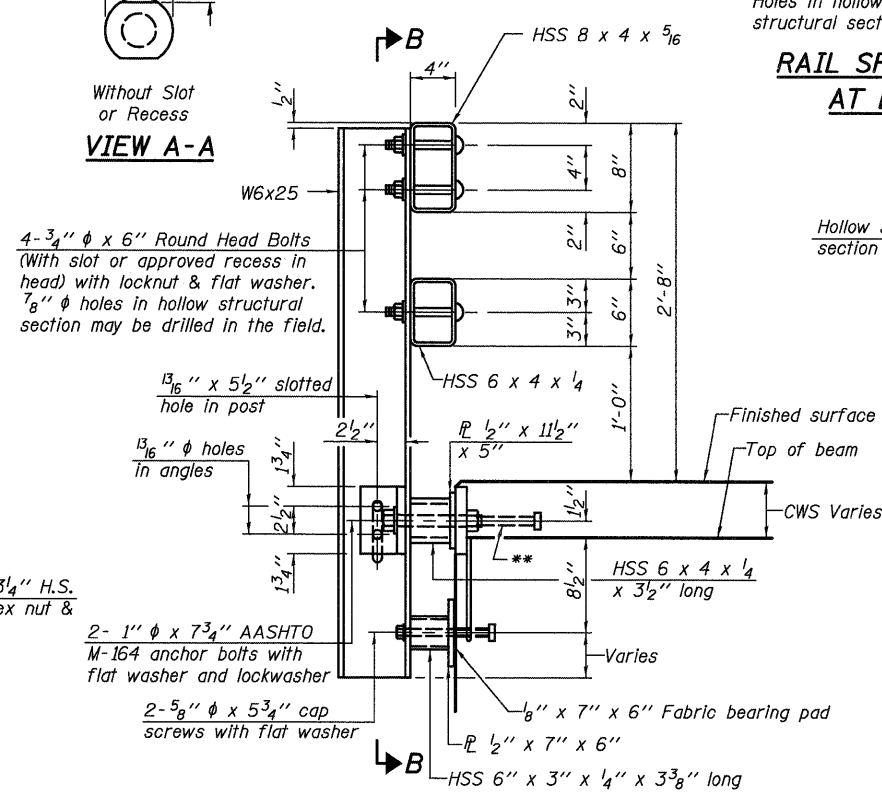


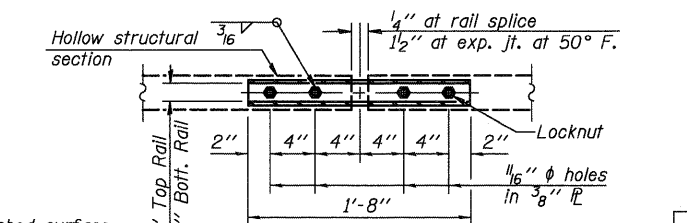
SECTION AT RAIL SPLICE



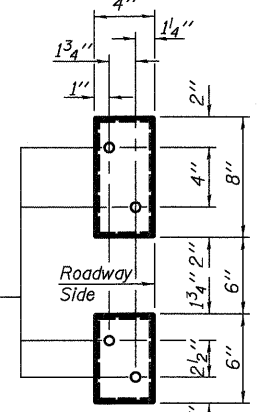
SECTION B-B



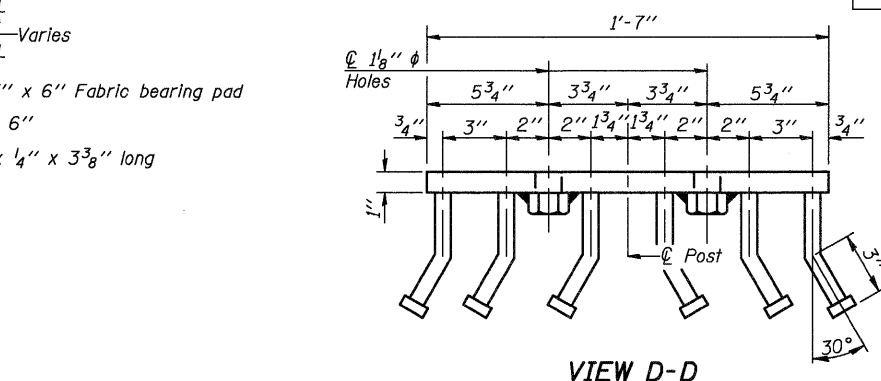
SECTION AT RAIL POST



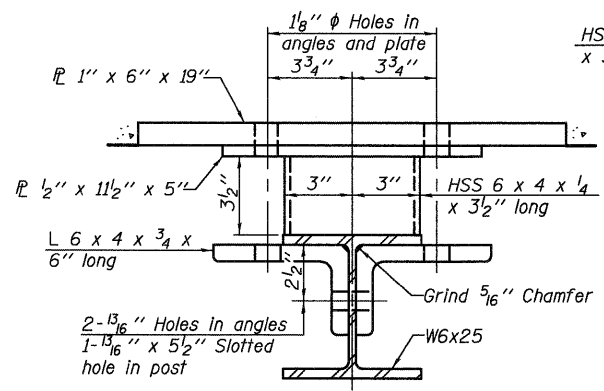
PLAN-BOTT. SPLICE P TYPICAL



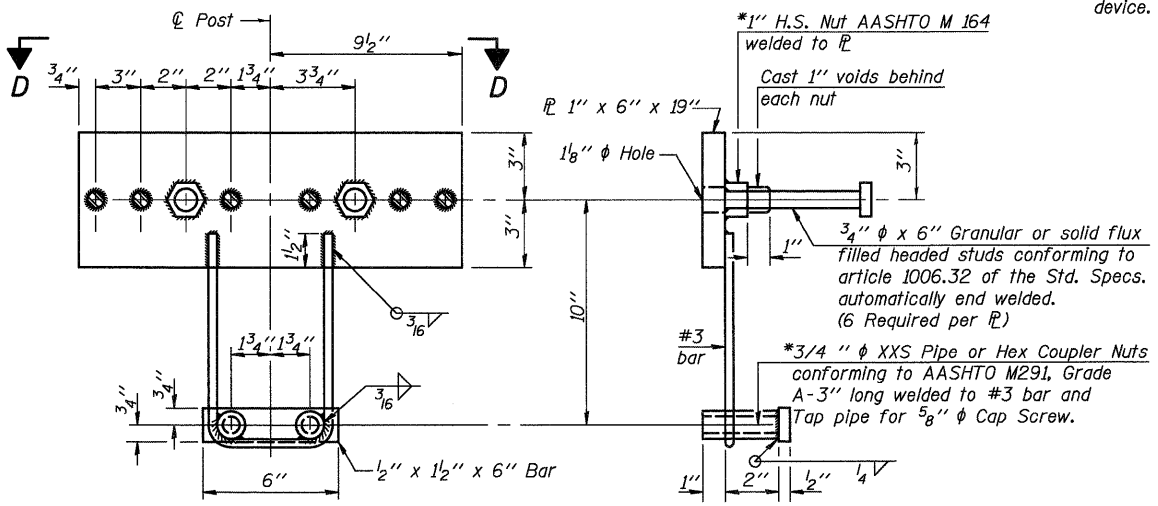
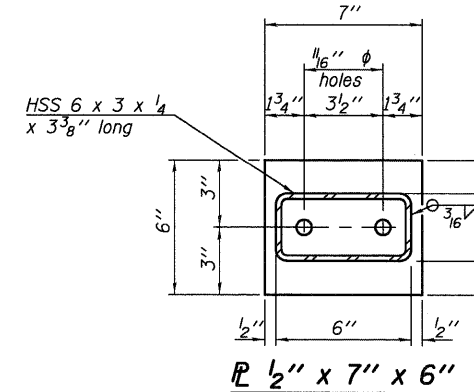
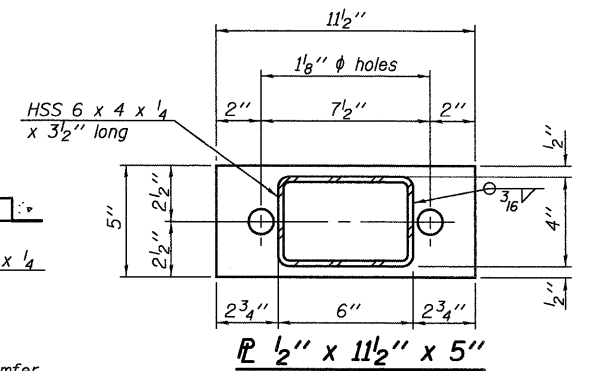
VIEW E-E



VIEW D-D



SECTION C-C



ANCHOR DEVICE

Notes:
 All field drilled holes shall be coated with an approved zinc rich paint before erection.
 For multi-span bridges, sufficient 1/4" x 6" x 1'-2" galvanized steel shims shall be provided to align rail between adjacent spans. Cost included with Steel Railing, Type SM.
 Steel rail elements shall be galvanized according to Article 509.05 of the Standard Specifications.
 ** The studs of the anchor devices shall be placed below the top reinforcement bars and the outermost longitudinal reinforcement bar shall be placed directly above the studs of the rail post anchor device.

BILL OF MATERIAL

Item	Unit	Quantity
Steel Railing, Type SM	Foot	468

*Threaded areas shall be plugged or blocked off during casting of beam. Galvanized after fabrication.

FILENAME: I:\Jobs\devitt county\7211 ch 10 over n fork salt creek\cadd\CADD Sheets\0203900-00000.dgn

R-34CWS 10-1-08 (6'-3" Maximum Post Spacing) (5" minimum to 7'8" maximum CWS thickness)

USER NAME = dheberling	DESIGNED - FLL	REVISED
PLOT SCALE = @1 1/16" = 1' IN.	DRAWN - DLH	REVISED
PLOT DATE = 8/18/2009	CHECKED - CWC	REVISED
	DATE -	REVISED

WHKS & CO.
 ENGINEERING
 7018 KINGSMILL CT.,
 SPRINGFIELD, IL
 (217) 483-9457
 DESIGN FIRM #184001036

STATE OF ILLINOIS
 DEPARTMENT OF TRANSPORTATION

STEEL RAILING, TYPE SM WITH CONC. WEARING SURFACE
 CH 10 OVER NORTH FORK SALT CREEK
 SCALE: SHEET NO. 7 OF 11 SHEETS

F.A.S. RTE. 543	SECTION 09-00025-01-BR	COUNTY DEWITT	TOTAL SHEETS 17	SHEET NO. 13
S.N. 020-3900		CONTRACT NO. 91423		
FED. ROAD DIST. NO.		ILLINOIS FED. AID PROJECT		