

F.A.S. RTE.	SECTION	COUNTY	TOTAL SHEETS	SHEET NO.
543	09-00025-01-BR	DEWITT	17	1
		ILLINOIS	CONTRACT NO. 91423	

STATE OF ILLINOIS
DEPARTMENT OF TRANSPORTATION
DIVISION OF HIGHWAYS

PLANS FOR PROPOSED BRIDGE REHABILITATION

F.A.S. 543 - CH 10 (PARNELL ROAD)
DEWITT COUNTY
SECTION 09-00025-01-BR
PROJECT NO. ARA-0543(105)
JOB NO. C-95-344-09

INDEX OF SHEETS

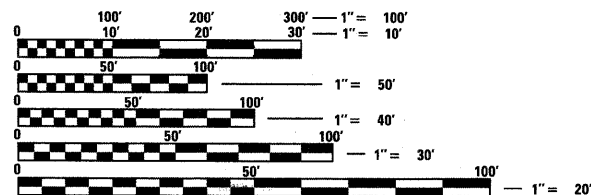
- 1 COVER SHEET
- 2 GENERAL NOTES AND SUMMARY OF QUANTITIES
- 3 EXISTING AND PROPOSED TYPICAL SECTIONS
- 4-5 DETAILS
- 6 PLAN AND PROFILE
- 7-17 BRIDGE PLANS

STANDARDS

- 000001-05 STANDARD SYMBOLS, ABBREVIATION & PATTERNS
- 280001-04 TEMPORARY EROSION CONTROL SYSTEMS
- 515001-03 NAME PLATE FOR BRIDGES
- 601001-03 SUB-SURFACE DRAINS
- 601101-01 CONCRETE HEADWALL FOR PIPE DRAIN
- 630001-08 STEEL PLATE BEAM GUARDRAIL
- 630301-05 SHOULDER WIDENING FOR TYPE 1 (SPECIAL) GUARDRAIL TERMINALS
- 631032-04 TRAFFIC BARRIER TERMINAL, TYPE 6A
- 635006-03 REFLECTOR AND TERMINAL MARKER PLACEMENT
- 701901-01 TRAFFIC CONTROL DEVICES
- 780001-02 TYPICAL PAVEMENT MARKINGS
- BLR 21-8 TYPICAL APPLICATION FOR TRAFFIC CONTROL DEVICES FOR CONSTRUCTION ON RURAL LOCAL HIGHWAYS



LOCATION OF SECTION INDICATED THUS: - [rectangle] -



FULL SIZE PLANS HAVE BEEN PREPARED USING STANDARD ENGINEERING SCALES. REDUCED SIZED PLANS WILL NOT CONFORM TO STANDARD SCALES. IN MAKING MEASUREMENTS ON REDUCED PLANS, THE ABOVE SCALES MAY BE USED.

J.U.L.I.E.
JOINT UTILITY LOCATION INFORMATION FOR EXCAVATION
1-800-892-0123
OR 811

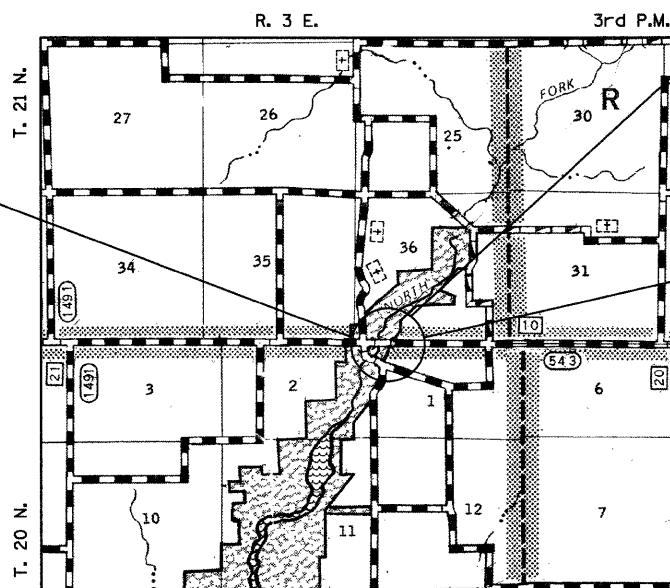
IMPROVEMENT BEGINS
STA. 477 + 06.00

UTILITY COMPANIES

VERIZON NORTH INC.
1312 E. EMPIRE STREET
BLOOMINGTON, IL 61701
PHONE: (309) 663-3156
CONTACT: MIKE HOPE

CORN BELT ELECTRIC CO-OP
1502 MORRISSEY DRIVE
BLOOMINGTON, IL 61761

MCCLEOD USA
PHONE: (800) 500-3453



STA. 479+54.45 SUPERSTRUCTURE REPLACEMENT
PRECAST PRESTRESSED CONCRETE DECK BEAM
BRIDGE, CONCRETE WEARING SURFACE. FOUR SPANS
AT 233'-11" BK.-TO-BK. ABUTMENTS.
30'-0" OUT-TO-OUT, 16° LT. FWD, SKEW
SN 020-3900

IMPROVEMENT ENDS
STA. 482 + 30.00

FUNCTIONAL CLASSIFICATION = RURAL MAJOR COLLECTOR
2010 ADT = 510
DESIGN SPEED = 50 MPH

LOCATION MAP



GROSS LENGTH = 524 FT. = 0.099 MILE
NET LENGTH = 524 FT. = 0.099 MILE



James A. Colbrook Jr.
8-19-09
Exp. 11-30-09

APPROVED _____ August 19, 20 09 _____
COUNTY ENGINEER

PASSED _____ 8/26 20 09 _____
DISTRICT FIVE ENGINEER OF
LOCAL ROADS AND STREETS

Released For Bid Based on Limited Review _____ 8/26 20 09 _____
DEPUTY DIRECTOR OF HIGHWAYS
REGION THREE ENGINEER

STATE OF ILLINOIS
DEPARTMENT OF TRANSPORTATION

WHKS & CO. ENGINEERING
7018 KINGSMILL CT.,
SPRINGFIELD, IL
(217) 483-9457
DESIGN FIRM #184001036

PROJECT ENGINEER: JAMES A. COLBROOK JR, P.E.
PROJECT MANAGER: CORY W. CHAMBERLAIN, P.E., S.E.

CONTRACT NO. 91423

**PRINTED BY THE AUTHORITY
OF THE STATE OF ILLINOIS**

SUMMARY OF QUANTITIES

CODE NUMBER	PAY ITEM	UNIT	TOTAL
20200100	EARTH EXCAVATION	CU YD	64
20400800	FURNISHED EXCAVATION	CU YD	382
25001000	SEEDING, CLASS 2 (SPECIAL)	ACRE	0.6
28000310	AGGREGATE DITCH CHECKS	EACH	4
28100210	STONE RIPRAP, CLASS A5 (SPECIAL)	TON	860
35101400	AGGREGATE BASE COURSE, TYPE B	TON	325
40600100	BITUMINOUS MATERIALS (PRIME COAT)	GALLON	224
40603080	HOT-MIX ASPHALT BINDER COURSE, IL-19.0, N50	TON	78
40603310	HOT-MIX ASPHALT SURFACE COURSE, MIX "C", N50	TON	58
42001300	PROTECTIVE COAT	SQ YD	790
44000100	PAVEMENT REMOVAL	SQ YD	676
48101200	AGGREGATE SHOULDERS, TYPE B	TON	182
50101500	REMOVAL OF EXISTING SUPERSTRUCTURES	EACH	1
50102400	CONCRETE REMOVAL	CU YD	8.9
50300225	CONCRETE STRUCTURES	CU YD	7.4
50300260	BRIDGE DECK GROOVING	SQ YD	722
50400405	PRECAST PRESTRESSED CONCRETE DECK BEAMS (21" DEPTH)	SQ FT	6,960
50800205	REINFORCEMENT BARS, EPOXY COATED	POUND	10,620
50901050	STEEL RAILING, TYPE SM	FOOT	468
51500100	NAME PLATES	EACH	1
52000110	PREFORMED JOINT STRIP SEAL	FOOT	63
58700300	CONCRETE SEALER	SQ FT	560
59000200	EPOXY CRACK INJECTION	FOOT	12
59300100	CONTROLLED LOW-STRENGTH MATERIAL	CU YD	16
60100060	CONCRETE HEADWALL FOR PIPE DRAINS	EACH	4
60107600	PIPE UNDERDRAINS 4"	FOOT	430
60108100	PIPE UNDERDRAINS 4" (SPECIAL)	FOOT	80
63100087	TRAFFIC BARRIER TERMINAL, TYPE 6A	EACH	4
63200310	GUARDRAIL REMOVAL	FOOT	182
63301210	REMOVE AND RE-ERECT STEEL PLATE BEAM GUARD RAIL, TYPE A	FOOT	75
67100100	MOBILIZATION	L SUM	1
70101830	TRAFFIC CONTROL AND PROTECTION, STANDARD BLR 21	L SUM	1
78001110	PAINT PAVEMENT MARKING - LINE 4"	FOOT	1,150
78201000	TERMINAL MARKER - DIRECT APPLIED	EACH	4
X0325303	STRUCTURAL REPAIR OF CONCRETE (DEPTH GREATER THAN 5 INCHES)	SQ FT	5.0
X0325305	STRUCTURAL REPAIR OF CONCRETE (DEPTH EQUAL TO OR LESS THAN 5 INCHES)	SQ FT	6.0
X5030305	CONCRETE WEARING SURFACE, 5"	SQ YD	773
X6330103	REMOVE AND RE-ERECT TRAFFIC BARRIER TERMINAL, TYPE 1 SPECIAL, TANGENT	EACH	4
Z0001900	ASBESTOS BEARING PAD REMOVAL	EACH	88

* SPECIAL PROVISION
 Δ SPECIALTY ITEMS

CONSTRUCTION TYPE CODE: X080-2A

EARTH WORK SCHEDULE

LOCATION	20200100 EARTH EXCAVATION	*EXCAVATION TO BE USED IN EMBANKMENT (ADJUSTED FOR SHRINKAGE) (COL 1 x 0.75) (CU. YD.)	*EMBANKMENT (FILL)	20400800 FURNISHED EXCAVATION
477+0600 TO 478+37.49	29	22	195	173
480+71.41 TO 482+30.00	35	26	235	209
TOTAL	64	48	430	382
EARTH EXCAVATION SHRINKAGE FACTOR = 25%				
ITEMS MARKED WITH AN ASTERISK (*) ARE FOR INFORMATIONAL PURPOSES ONLY				

GENERAL NOTES

- WHERE PERMANENT SURVEY MARKERS ARE ENCOUNTERED, THE ENGINEER SHALL BE NOTIFIED BEFORE SUCH MONUMENTS ARE DISTURBED. THE CONTRACTOR SHALL PROTECT AND PRESERVE ALL PROPERTY MARKERS AND MONUMENTS UNTIL THE OWNER AND AN AUTHORIZED SURVEYOR HAS WITNESSED OR OTHERWISE REFERENCED THE LOCATION.
- THE ENGINEER SHALL NOT GUARANTEE THE WORK OF ANY CONTRACTOR OR SUBCONTRACTOR, SHALL HAVE NO SUPERVISION OF THE PERSONS DOING THE WORK, SHALL HAVE NO CHARGE OF THE WORK, SHALL NOT BE RESPONSIBLE FOR SAFETY IN, ON, OR ABOUT THE JOB SITE OR HAVE ANY CONTROL OF THE SAFETY OR ADEQUACY OF ANY EQUIPMENT, BUILDING COMPONENT, SCAFFOLDING, SUPPORT, FORMS OR OTHER WORK AIDS.
- THE FOLLOWING RATES WERE USED IN CALCULATING QUANTITIES FOR THIS PROJECT:
 RIPRAP: 1.5 TONS/CU YD
 AGGREGATE SHOULDERS: 2.05 TONS/CU YD
 AGGREGATE BASE COURSE: 2.05 TONS/CU YD
 BITUMINOUS MATERIALS (PRIME COAT): 0.35 GAL/SY
- CONTRACTOR SHALL FOLLOW CONSTRUCTION REQUIREMENTS OF SECTION 611 WHEN EXISTING FIELD TILE IS ENCOUNTERED UNLESS DIRECTED OTHERWISE BY ENGINEER. THIS WORK SHALL NOT BE PAID FOR SEPARATELY BUT SHALL BE CONSIDERED AS INCLUDED IN THE CONTRACT UNIT PRICES FOR THE WORK ITEMS SPECIFIED.
- THE CONTRACTOR SHALL REPLACE ALL STREET SIGNS REMOVED DURING CONSTRUCTION AS NEAR AS POSSIBLE TO THEIR ORIGINAL LOCATION OR AS DETERMINED BY THE ENGINEER. THIS WORK SHALL NOT BE PAID FOR SEPARATELY BUT SHALL BE CONSIDERED AS INCLUDED IN THE CONTRACT UNIT PRICES FOR THE WORK ITEMS SPECIFIED.

SCHEDULES **

REMOVE AND RE-ERECT STEEL PLATE BEAM GUARD RAIL, TYPE A (63301210)

STA. 477+85.54	TO	STA. 477+98.04,	LT. =	12.5 FT	
STA. 477+76.94	TO	STA. 477+89.44,	RT. =	12.5 FT	
STA. 481+19.46	TO	STA. 481+44.46,	LT. =	25.0 FT	
STA. 481+10.86	TO	STA. 481+35.86,	RT. =	25.0 FT	
				TOTAL =	75.0 FT

REMOVE AND RE-ERECT TRAFFIC BARRIER TERMINAL, TYPE 1 SPECIAL, TANGENT (X6330103)

STA. 477+35.54	TO	STA. 477+85.54,	LT. =	1 EACH	
STA. 477+26.94	TO	STA. 477+76.94,	RT. =	1 EACH	
STA. 481+44.46	TO	STA. 481+94.46,	LT. =	1 EACH	
STA. 481+35.86	TO	STA. 481+85.86,	RT. =	1 EACH	
				TOTAL =	4 EACH

TRAFFIC BARRIER TERMINAL, TYPE 6A (63100087)

STA. 477+98.04	TO	STA. 478+44.62,	LT. =	1 EACH	
STA. 477+89.44	TO	STA. 478+36.02,	RT. =	1 EACH	
STA. 480+72.88	TO	STA. 481+19.46,	LT. =	1 EACH	
STA. 480+64.28	TO	STA. 481+10.86,	RT. =	1 EACH	
				TOTAL =	4 EACH

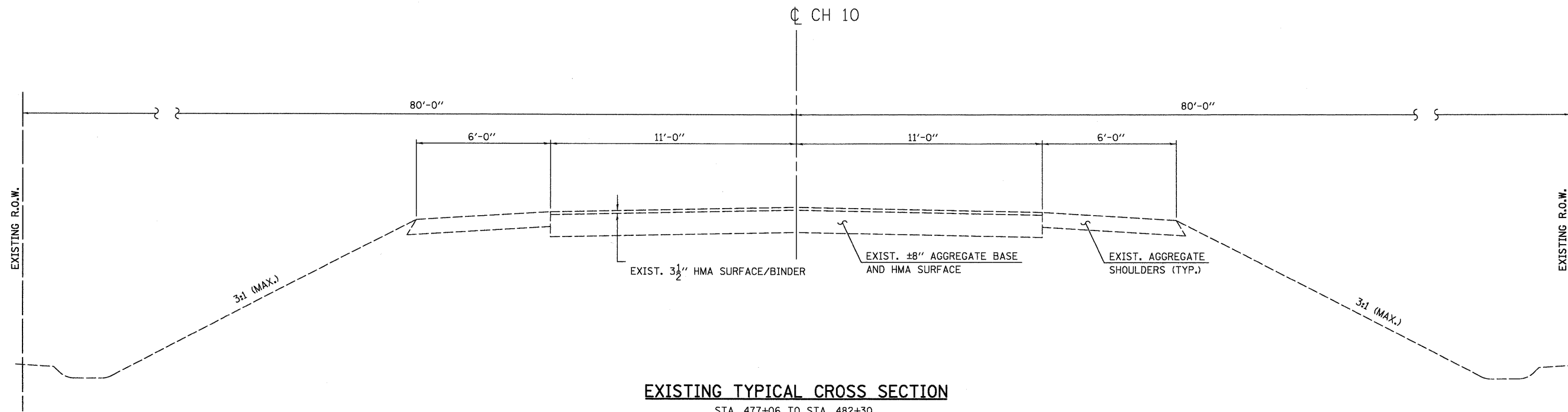
GUARDRAIL REMOVAL (63200310)

STA. 477+91.79	TO	STA. 478+41.79,	LT. =	50 FOOT	
STA. 477+91.19	TO	STA. 478+33.19,	RT. =	42 FOOT	
STA. 480+75.71	TO	STA. 481+16.71,	LT. =	41 FOOT	
STA. 480+67.11	TO	STA. 481+16.11,	RT. =	49 FOOT	
				TOTAL =	182 FOOT

** STATIONS AND REMOVAL QUANTITIES ARE APPROXIMATE.

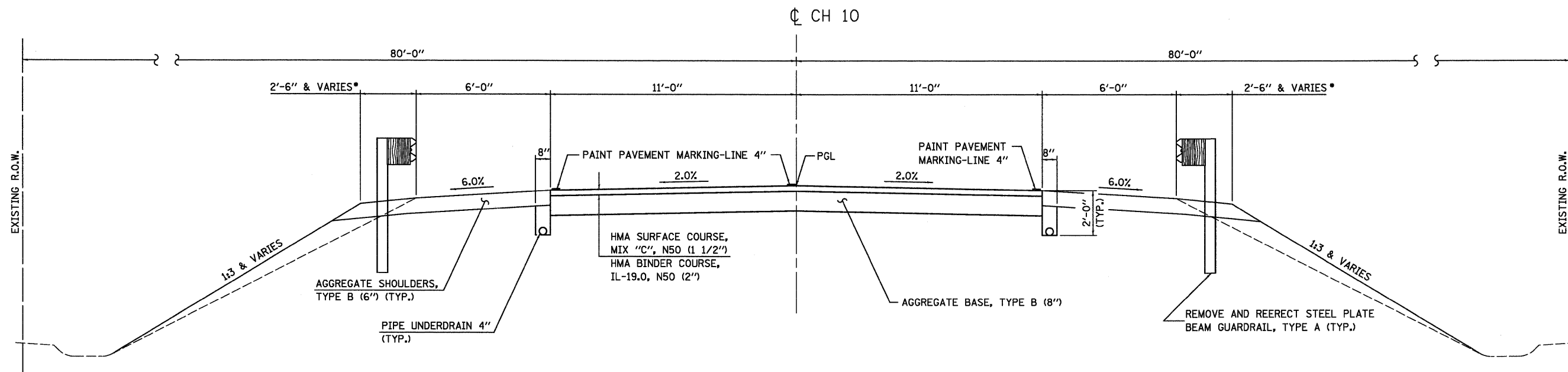
BITUMINOUS CONCRETE MIXTURE REQUIREMENTS

LOCATION	COUNTY HIGHWAY 10	
MIXTURE USE	BINDER	SURFACE
AC/PG	PG 64-22	PG 64-22
RAP % (MAX)	25	15
DESIGN AIR VOIDS	4.0% @ Ndes=50	
MIX COMP	IL-19.0	IL-9.5
FRICTION AG	NA	MIX C



EXISTING TYPICAL CROSS SECTION

STA. 477+06 TO STA. 482+30



PROPOSED TYPICAL CROSS SECTION

STA. 477+06 TO STA. 482+30

* SEE DETAIL ON SHEET 5 OF 17
AND STANDARD 630301 FOR SHOULDER
WIDENING AT GUARDRAILS.

USER NAME = dheberling
PLOT SCALE = 2.5000' / IN.
PLOT DATE = 8/18/2009

DESIGNED - JAC	REVISED -
DRAWN - DLH	REVISED -
CHECKED - CWC	REVISED -
DATE -	REVISED -

WHKS & CO.
ENGINEERING

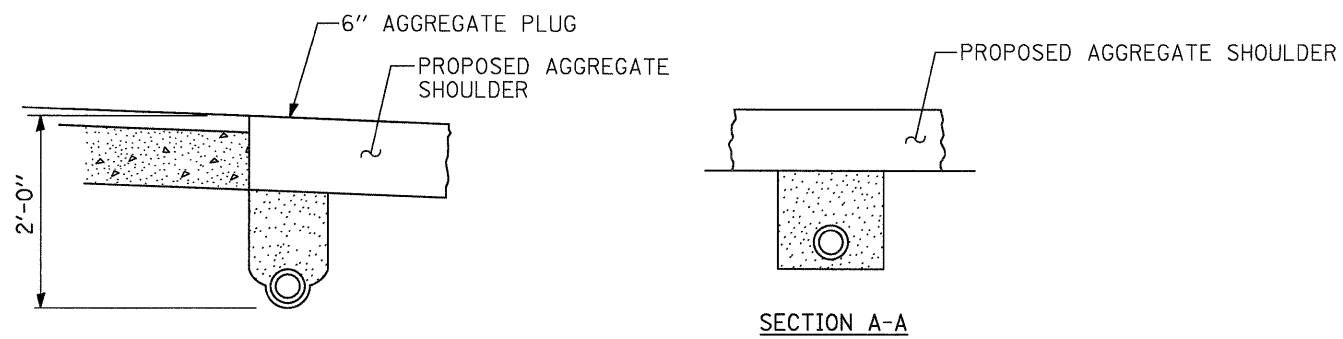
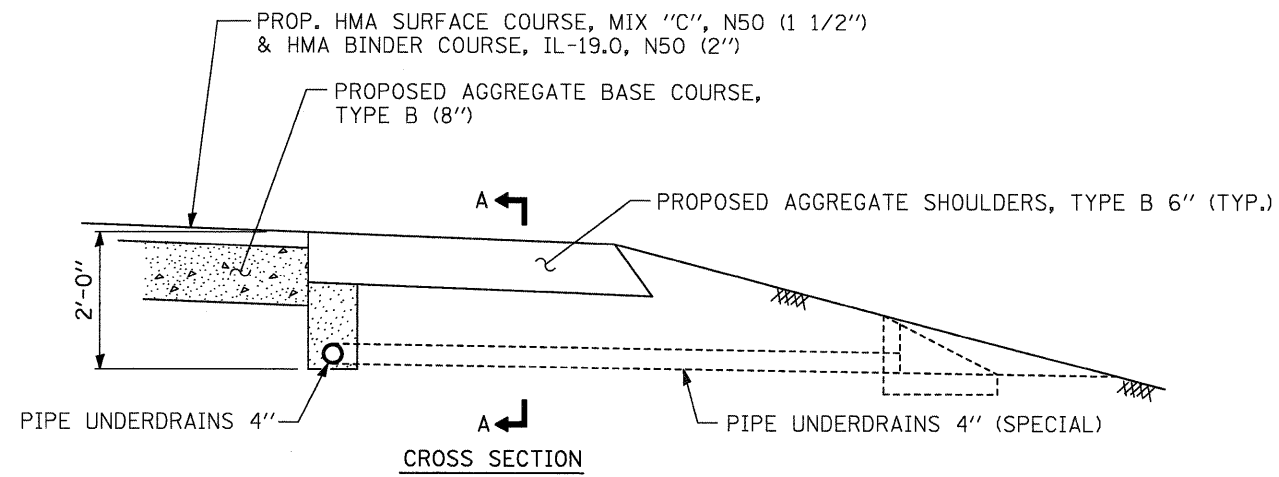
7018 KINGSMILL CT.,
SPRINGFIELD, IL
(217) 483-9457
DESIGN FIRM #184001036

STATE OF ILLINOIS
DEPARTMENT OF TRANSPORTATION

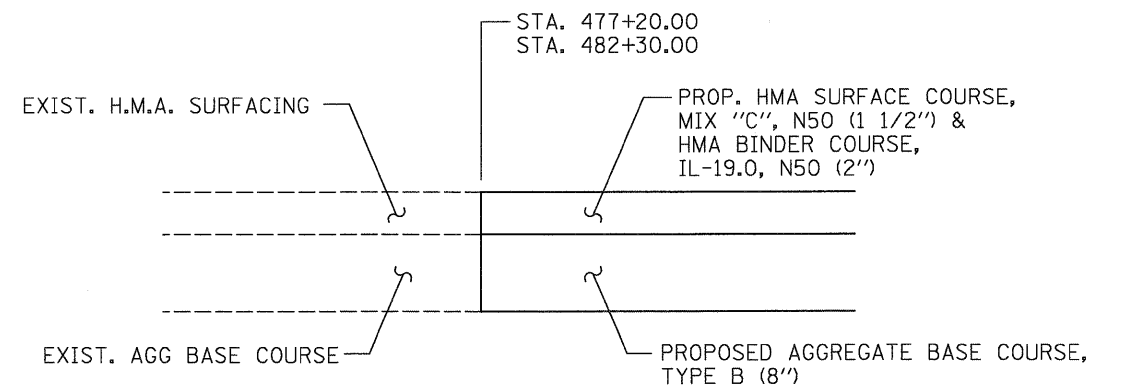
EXISTING AND PROPOSED TYPICAL SECTIONS
CH 10 OVER NORTH FORK SALT CREEK

SCALE: 1" = 2.5' SHEET NO. OF SHEETS STA. TO STA.

F.A.S. RTE.	SECTION	COUNTY	TOTAL SHEETS	SHEET NO.
543	09-00025-01-BR	DEWITT	17	3
CONTRACT NO. 91423				
ILLINOIS FED. AID PROJECT				



PIPE UNDERDRAINS DETAIL
NTS



BUTT JOINT DETAIL
NTS

NOTES: SEE HIGHWAY STANDARD 601001-03 SUB-SURFACE DRAINS FOR ADDITIONAL DETAILS.

USER NAME = dhaberling
PLOT SCALE = 0.0033' / IN.
PLOT DATE = 8/18/2009

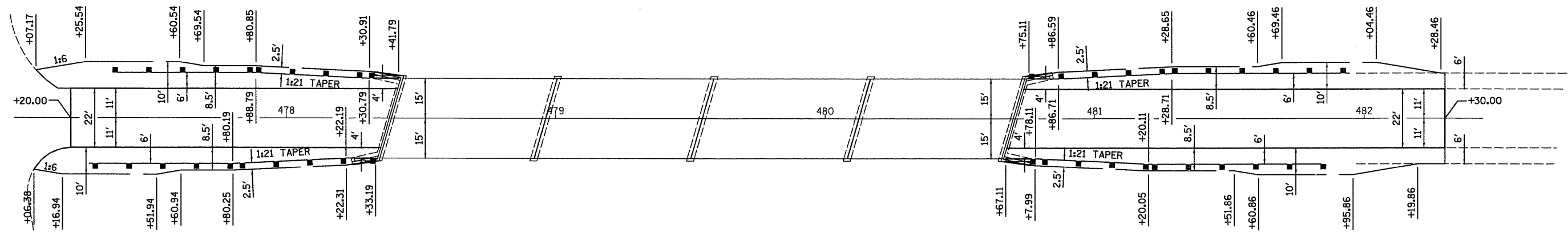
DESIGNED - JAC	REVISED -
DRAWN - DLH	REVISED -
CHECKED - CWC	REVISED -
DATE -	REVISED -

WHKS & CO.
ENGINEERING
7018 KINGSMILL CT.,
SPRINGFIELD, IL
(217) 483-9457
DESIGN FIRM #184001036

STATE OF ILLINOIS
DEPARTMENT OF TRANSPORTATION

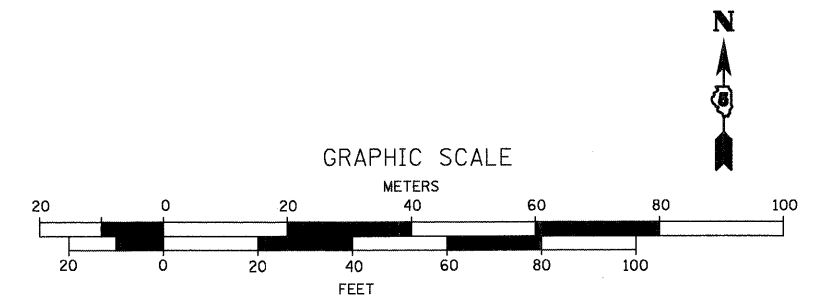
DETAILS			
CH 10 OVER NORTH FORK SALT CREEK			
SCALE: 1" = 1"	SHEET NO.	OF SHEETS	STA. TO STA.

F.A.S. RTE.	SECTION	COUNTY	TOTAL SHEETS	SHEET NO.
543	09-00025-01-BR	DEWITT	17	4
ILLINOIS FED. AID PROJECT			CONTRACT NO. 91423	



**AGGREGATE SHOULDER AND SHOULDER WIDENING
FOR ROADSIDE BARRIER INSTALLATION DETAIL**

NOTE:
STATIONS ARE APPROXIMATE.

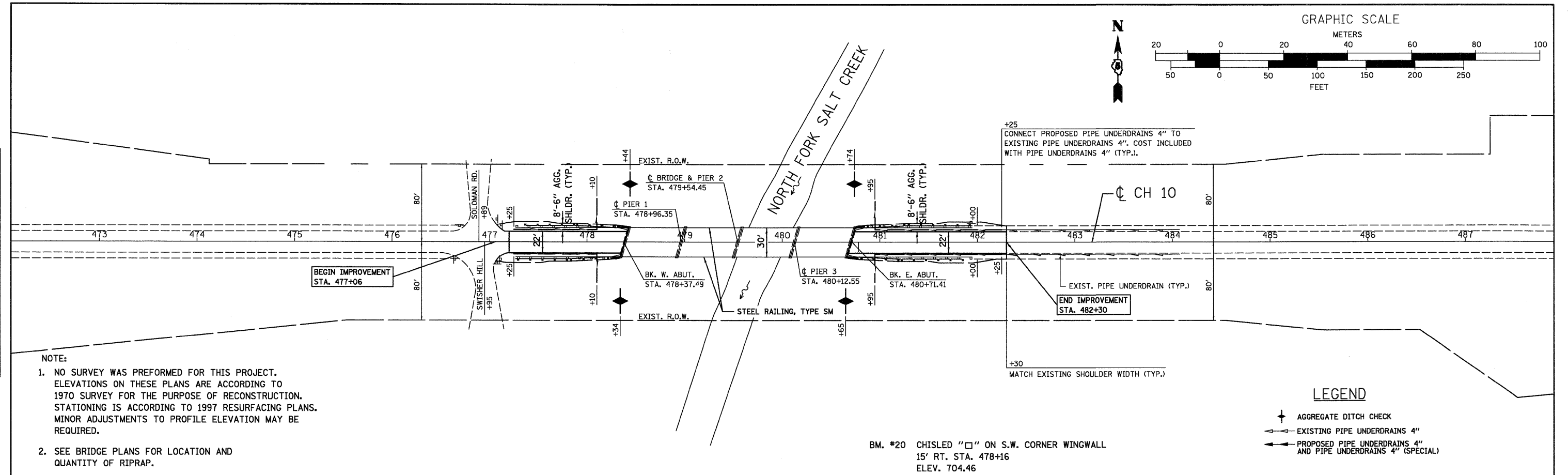
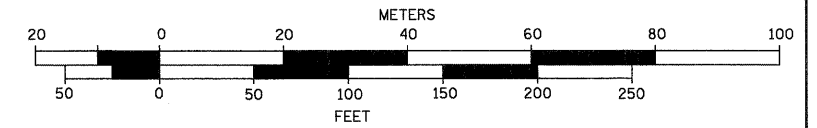


USER NAME = dheberling PLOT SCALE = 20.0002' / IN. PLOT DATE = 8/18/2009	DESIGNED - JAC DRAWN - DLH CHECKED - CWC DATE -	REVISED - REVISED - REVISED - REVISED -	7018 KINGSMILL CT., SPRINGFIELD, IL (217) 483-9457 DESIGN FIRM #184001036	STATE OF ILLINOIS DEPARTMENT OF TRANSPORTATION	DETAILS CH 10 OVER NORTH FORK SALT CREEK			F.A.S. RTE. 543	SECTION 09-00025-01-BR	COUNTY DEWITT	TOTAL SHEETS 17	SHEET NO. 5
	SCALE: 1" = 20' SHEET NO. OF SHEETS STA. 477+20 TO STA. 482+30					CONTRACT NO. 91423 ILLINOIS FED. AID PROJECT						

DATE	
BY	
REVIEWED	
PLANNED	
ALIGNMENT CHECKED	
NOTE BOOK NO.	
CADD FILE NAME	

DATE	
BY	
REVIEWED	
GRADES CHECKED	
NOTE BOOK NO.	
STRUCTURE NOTATIONS SHOWN	

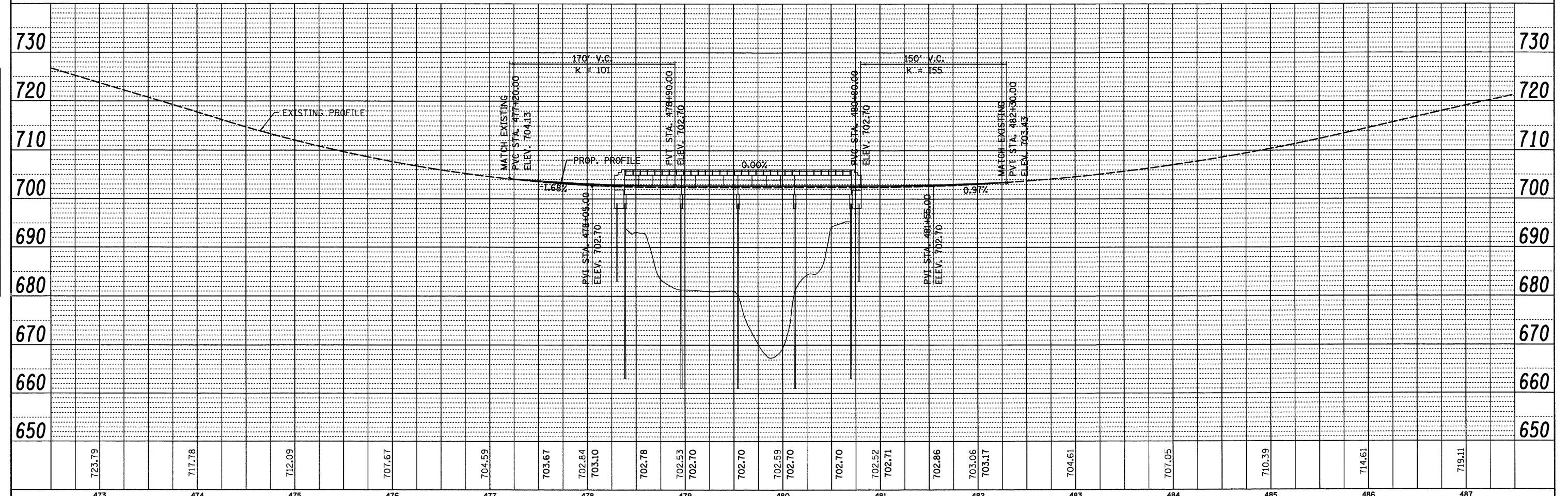
GRAPHIC SCALE



- NOTE:
- NO SURVEY WAS PERFORMED FOR THIS PROJECT. ELEVATIONS ON THESE PLANS ARE ACCORDING TO 1970 SURVEY FOR THE PURPOSE OF RECONSTRUCTION. STATIONING IS ACCORDING TO 1997 RESURFACING PLANS. MINOR ADJUSTMENTS TO PROFILE ELEVATION MAY BE REQUIRED.
 - SEE BRIDGE PLANS FOR LOCATION AND QUANTITY OF RIPRAP.

BM. #20 CHISLED "□" ON S.W. CORNER WINGWALL
15' RT. STA. 478+16
ELEV. 704.46

- LEGEND
- ↑ AGGREGATE DITCH CHECK
 - ← EXISTING PIPE UNDERDRAINS 4"
 - PROPOSED PIPE UNDERDRAINS 4" AND PIPE UNDERDRAINS 4" (SPECIAL)



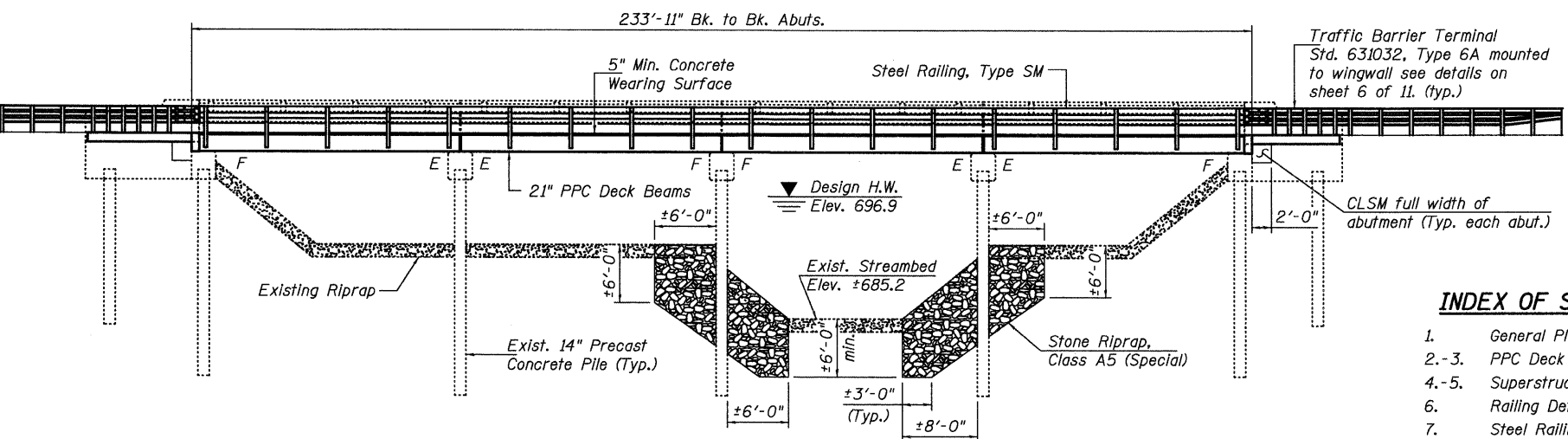
USER NAME = dhaber-ling	DESIGNED - JAC	REVISED -		7018 KINGSMILL CT., SPRINGFIELD, IL (217) 483-9457 DESIGN FIRM #184001036	STATE OF ILLINOIS DEPARTMENT OF TRANSPORTATION			PLAN AND PROFILE CH 10 OVER NORTH FORK SALT CREEK			F.A.S. RTE. 543	SECTION 09-00025-01-BR	COUNTY DEWITT	TOTAL SHEETS 17	SHEET NO. 6
PLOT SCALE = 50.0000' / IN.	DRAWN - DLH	REVISED -			SCALE: 1" = 50'			SHEET NO. OF SHEETS STA. 472+00 TO STA. 488+00			CONTRACT NO. 91423				
PLOT DATE = 8/18/2009	CHECKED - CWC	REVISED -			ILLINOIS FED. AID PROJECT										
	DATE -	REVISED -													

Benchmark: BM#20 - " " Chiseled on top of S.W. Wingwall at S.W. corner of S.N. 020-3900, Sta. 478+16, 15' Rt., Elev. 704.46.
 Existing Structure: Original Construction 1970 - 4 span PPC Deck Beam Bridge with bituminous wearing surface, concrete parapets, and Precast concrete pile bent piers and abutments. Contractor to remove and replace superstructure. Road to be closed during construction.

No Salvage

TOTAL BILL OF MATERIAL

ITEM	UNIT	SUPER	SUB	TOTAL
Stone Riprap, Class A5 (Special)	Ton		860	860
Protective Coat	Sq. Yd.	790		790
Removal of Existing Superstructures	Each	1		1
Concrete Removal	Cu. Yd.		8.9	8.9
Concrete Structures	Cu. Yd.		7.4	7.4
Bridge Deck Grooving	Sq. Yd.	722		722
Precast Prestressed Concrete Deck Beams (21" Depth)	Sq. Ft.	6,960		6,960
Reinforcement Bars, Epoxy Coated	Pound	9710	910	10,620
Steel Railing, Type SM	Foot	468		468
Name Plates	Each	1		1
Preformed Joint Strip Seal	Foot	63		63
Concrete Sealer	Sq. Ft.		560	560
Epoxy Crack Injection	Foot		12.0	12.0
Controlled Low-Strength Material	Cu. Yd.		16.0	16.0
Structural Repair of Concrete (Depth greater than 5")	Sq. Ft.		5.0	5.0
Structural Repair of Concrete (Depth equal to or less than 5")	Sq. Ft.		6.0	6.0
Concrete Wearing Surface, 5"	Sq. Yd.		773	773
Asbestos Bearing Pad Removal	Each		88	88



INDEX OF SHEETS

- General Plan & Elevation
- PPC Deck Beam Details
- Superstructure Details
- Railing Details
- Steel Railing, Type SM
- Abutments
- Pier Repairs

GENERAL NOTES

Reinforcement bars shall conform to the requirements of ASTM A 706 Gr 60. See Special Provisions.
 Reinforcement bars designated (E) shall be epoxy coated.
 Plan dimensions and details relative to existing plans are subject to nominal construction variations. The Contractor shall field verify existing dimensions and details affecting new construction and make necessary approved adjustments prior to construction or ordering of materials. Such variations shall not be cause for additional compensation for a change in scope of the work, however, the Contractor will be paid for the quantity actually furnished at the unit price bid for the work.
 Layout of slope protection system may be varied in the field to suit ground conditions as directed by the Engineer.
 Repair of the pier caps shall be completed prior to placement of the new beams. The Contractor is advised that the existing PPC Deck Beams are in a deteriorated condition with reduced load carrying capacity. It is the Contractor's responsibility to account for the condition of the beams when developing construction procedures for removal and replacement of the superstructure.
 If the Contractor's procedure for existing beam removal or placement of new beams involves placement of heavy equipment on the new or existing beams, a detailed procedure shall be submitted to the Engineer for approval. The procedure shall include calculations, sealed by an Illinois Licensed Structural Engineer, verifying the structural adequacy of the beams for the proposed loads.

NORTH FORK SALT CREEK
 REBUILT 20 BY
 DEWITT COUNTY
 SEC. 09-0025-01-BR
 F.A.S. RT. 543 STA. 479+54.45
 STR. NO. 020-3900 LOADING HL93

NAME PLATE

See Std. 515001
 Existing Name Plate shall be cleaned and relocated next to new Name Plate. Cost Included with Name Plates.

LOADING HL-93

No Future Wearing Surface Allowed

DESIGN SPECIFICATIONS

New Construction:
 2007 AASHTO LRFD Bridge
 Design Specifications with
 2008 Interims

DESIGN STRESSES

FIELD UNITS (Existing Construction)

$f'_c = 3,500$ psi
 $f_y = 40,000$ psi (reinforcement)

FIELD UNITS (New Construction)

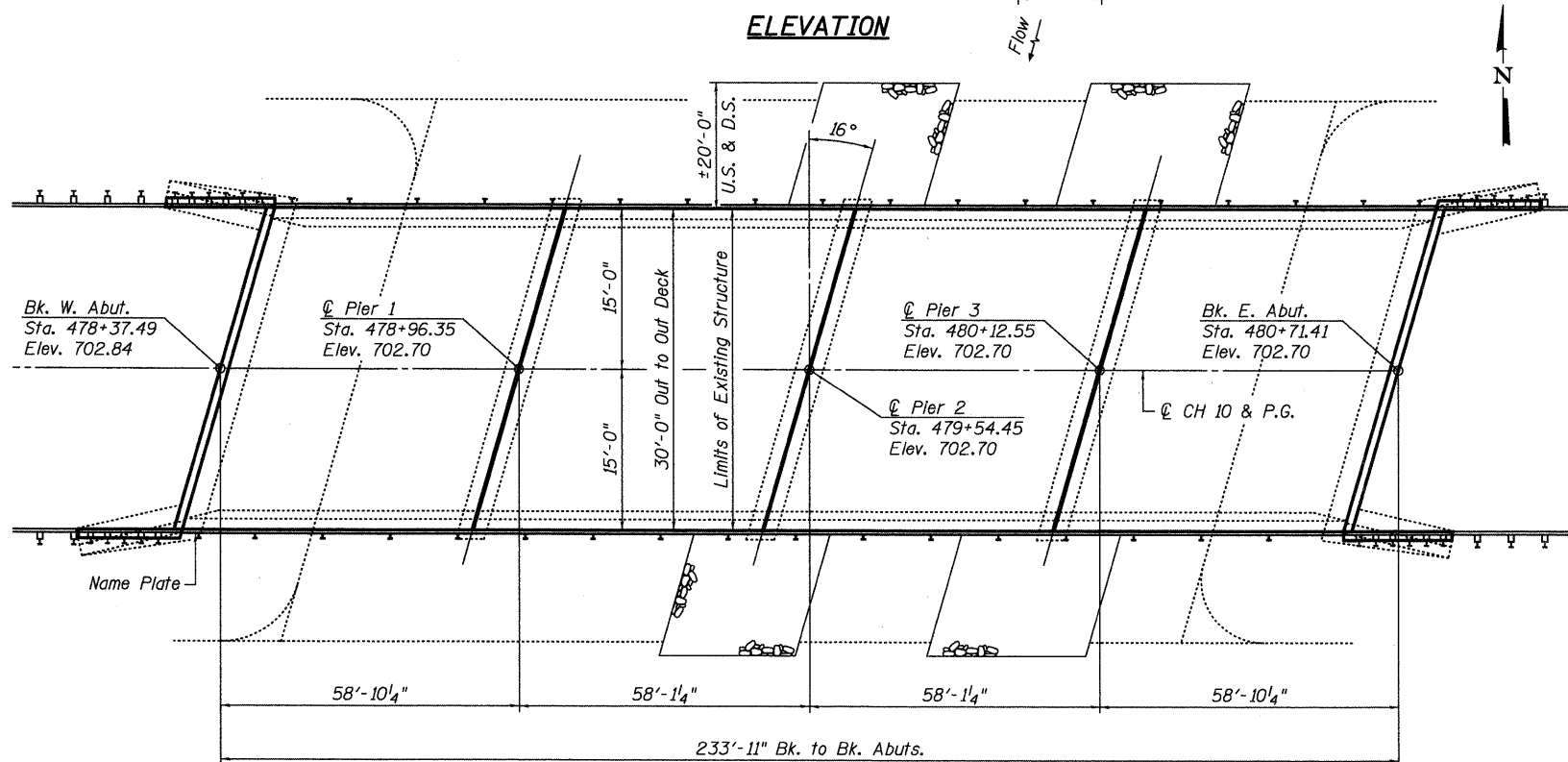
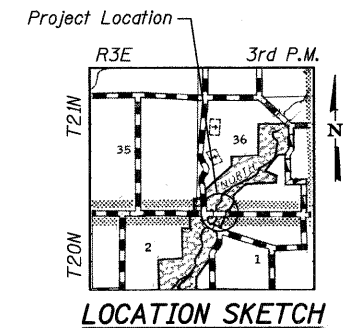
$f'_c = 3,500$ psi
 $f_y = 60,000$ psi (reinforcement)

PRECAST PRESTRESSED UNITS (New Construction)

$f'_c = 6,000$ psi
 $f'_{ci} = 5,000$ psi
 $f_{pu} = 270,000$ psi ($\frac{1}{2}$ " ϕ low lax. strands)
 $f_{pbt} = 201,960$ psi ($\frac{1}{2}$ " ϕ low lax strands)

SEISMIC DATA

Seismic Performance Category (SPC) = A
 Bedrock Acceleration Coefficient (A) = 0.046g
 Site Coefficient (S) = 1.0



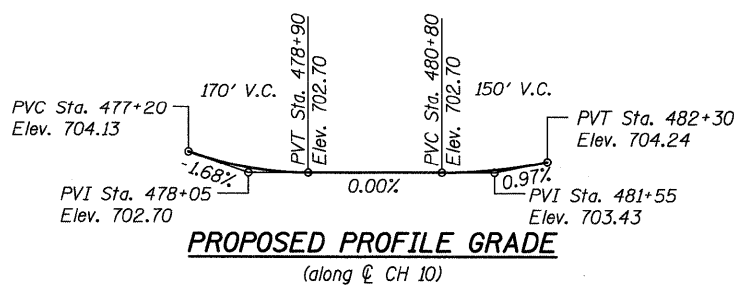
Conf. W. Chaudhry
 8-17-09
 Exp 11-30-10

PLAN

WATERWAY INFORMATION

Drainage Area = 112.42 sq. mi. Exist. Low Grade Elev. = 702.40 @ Sta. 479+54.45
 Prop. Low Grade Elev. = 702.40 @ Sta. 479+54.45

Flood	Freq. Yr.	Q C.F.S.	Opening Sq. Ft.		Head - Ft.		Headwater El.		
			Exist.	Prop.	H.W.E. Exist.	H.W.E. Prop.	Exist.	Prop.	
Design	20	7,830	1331	1331	696.90	0.50	0.50	697.40	697.40
Base	100	11,900	1421	1421	698.23	0.88	0.88	699.11	699.11
Max. Calc.	500	15,900	1848	1848	699.33	1.29	1.29	700.62	700.62



FILENAME: I:\jobs\dewitt county\7211 ch 10 over n fork salt creek\cadd\CADD Sheets\0203900-000000.dgn

USER NAME = dheber.ling	DESIGNED - FLL	REVISED
PLOT SCALE = 0.1 1/16" = 1' IN.	DRAWN - DLH	REVISED
PLOT DATE = 8/18/2009	CHECKED - CWC	REVISED
	DATE	REVISED

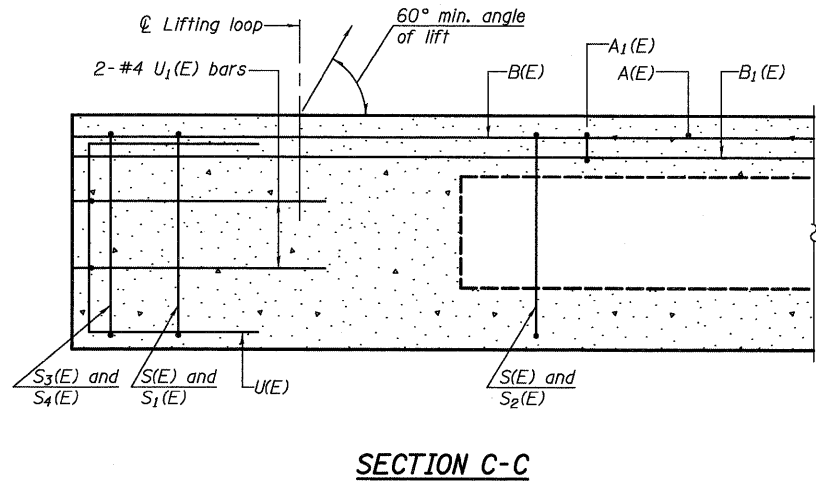
WHKS & CO.
 ENGINEERING
 7018 KINGSMILL CT.,
 SPRINGFIELD, IL
 (217) 483-9457
 DESIGN FIRM #184001036

STATE OF ILLINOIS
 DEPARTMENT OF TRANSPORTATION

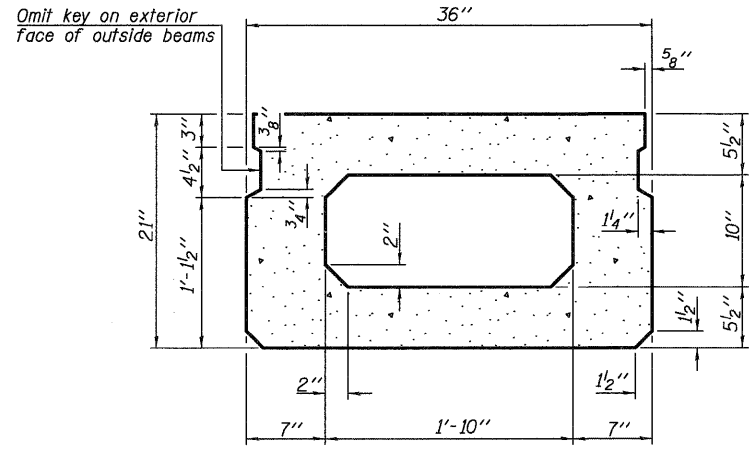
GENERAL PLAN AND ELEVATION
 CH 10 OVER NORTH FORK SALT CREEK
 SCALE: SHEET NO. 1 OF 11 SHEETS ϕ STA.

F.A.S. RTE. 543	SECTION 09-0025-01-BR	COUNTY DEWITT	TOTAL SHEETS 17	SHEET NO. 7
S.N. 020-3900		CONTRACT NO. 91423		
FED. ROAD DIST. NO.		ILLINOIS FED. AID PROJECT		

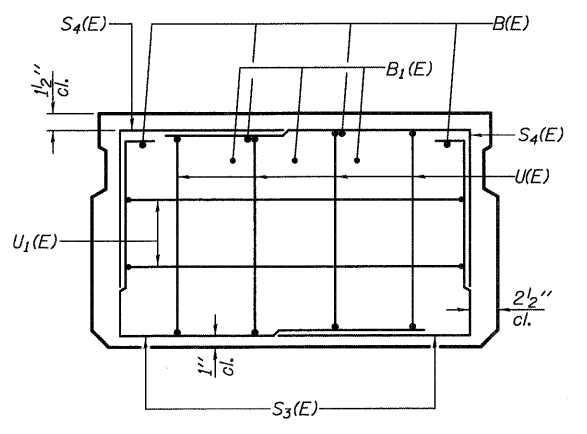
I:\jobs\de Witt county\7211 ch 10 over n fork salt creek\cadd\CADD Sheets\0203900-00000.dgn



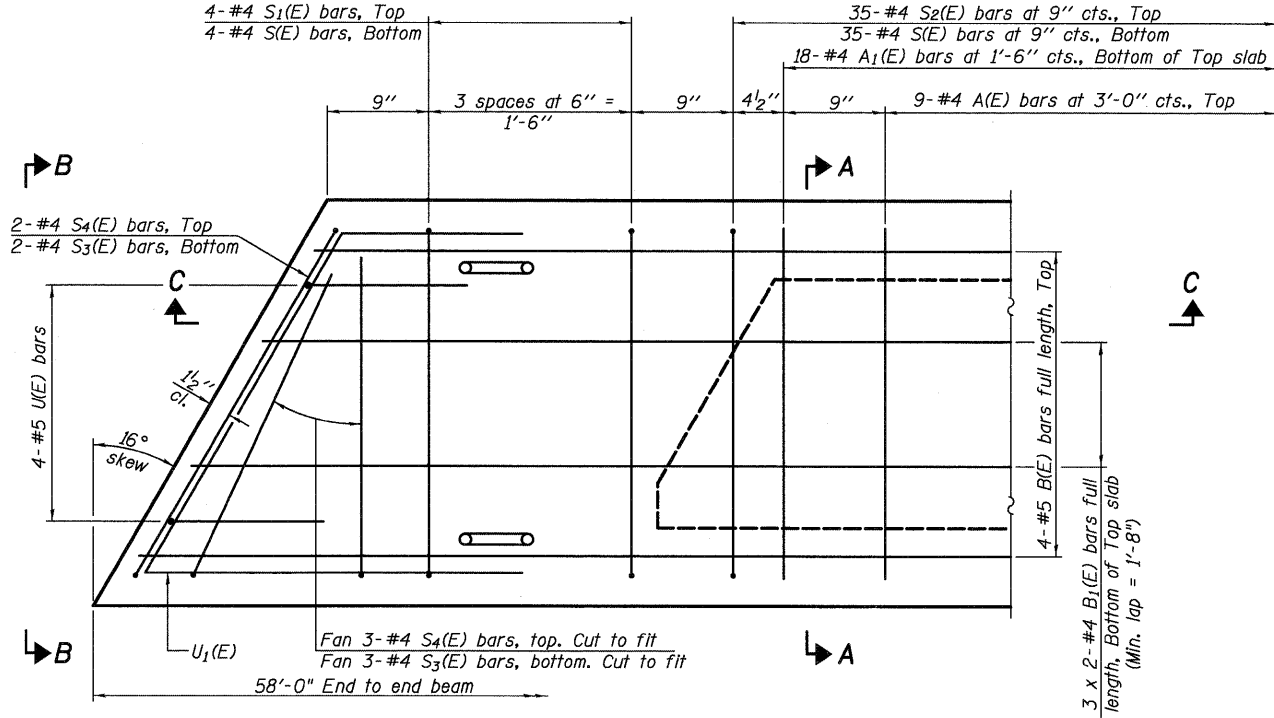
SECTION C-C



SECTION A-A
(Showing dimensions)

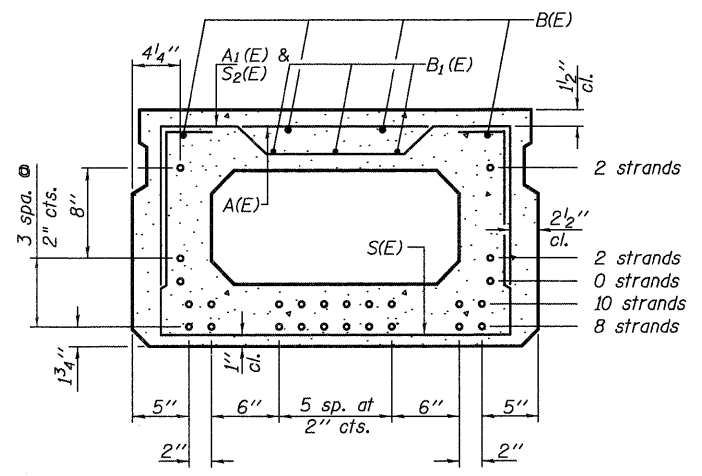


VIEW B-B



PLAN VIEW

Note: Spacing of S(E) and S2(E) bars may be adjusted up to 4" in the immediate area of the transverse tie diaphragms to miss the block outs for the transverse ties.



SECTION A-A

(Showing reinforcement and permissible strand locations)
Note: Place the number of strands specified in each row symmetrically about the centerline of beam in the permissible strand locations shown.

BAR LIST
ONE BEAM ONLY
(For information only)

Bar	No.	Size	Length	Shape
A(E)	18	#4	2'-7"	—
A1(E)	36	#4	2'-10"	—
B(E)	4	#5	57'-9"	—
B1(E)	6	#4	29'-9"	—
S(E)	78	#4	6'-5"	□
S1(E)	8	#4	4'-11"	□
S2(E)	70	#4	5'-2"	□
S3(E)	10	#4	4'-7"	□
S4(E)	10	#4	3'-10"	□
U(E)	8	#5	4'-0"	□
U1(E)	4	#4	5'-10"	□

D1 bars for exterior beams see sheet 4 of 11.

Notes:
See sheet 3 of 11 for additional details and Bill of Material.
Bars indicated thus 3 x 2-#4 etc. indicates 3 lines of bars with 2 lengths per line.

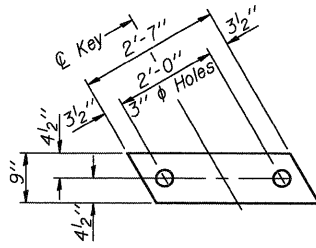
USER NAME = dheber.lmg	DESIGNED - FLL	REVISED
PLOT SCALE = @ 1/16" = 1' IN.	DRAWN - DLH	REVISED
PLOT DATE = 8/18/2009	CHECKED - CWC	REVISED
	DATE -	REVISED

WHKS & CO.
ENGINEERING
7018 KINGSMILL CT.,
SPRINGFIELD, IL
(217) 483-9457
DESIGN FIRM #184001036

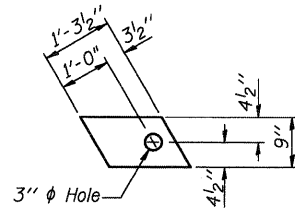
STATE OF ILLINOIS
DEPARTMENT OF TRANSPORTATION

21" X 36" PPC DECK BEAMS
CH 10 OVER NORTH FORK SALT CREEK
SCALE: SHEET NO. 2 OF 11 SHEETS STA.

F.A.S. RTE. 543	SECTION 09-00025-01-BR	COUNTY DEWITT	TOTAL SHEETS 17	SHEET NO. 8
S.N. 020-3900		CONTRACT NO. 91423		
FED. ROAD DIST. NO.		ILLINOIS FED. AID PROJECT		



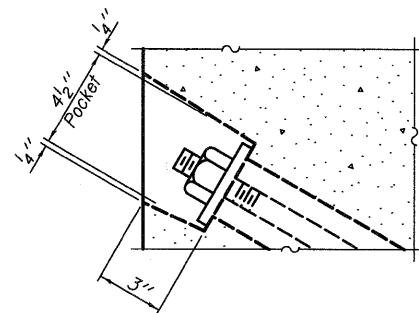
FABRIC BEARING PAD
(Interior)



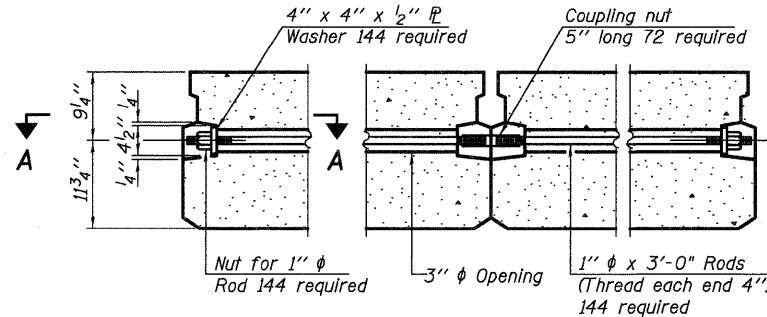
FABRIC BEARING PAD
(Exterior)

FIXED

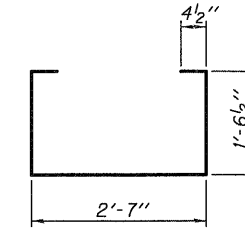
Note: Omit holes when using expansion bearings.



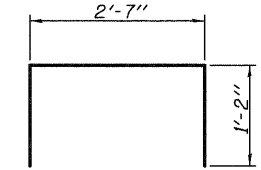
SECTION A-A



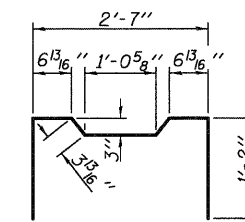
TYPICAL TRANSVERSE TIE ASSEMBLY



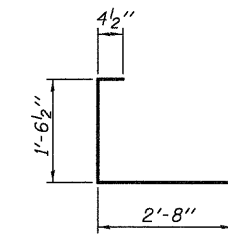
BAR S(E)



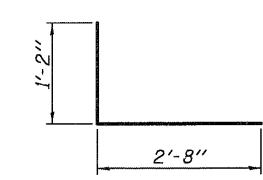
BAR S1(E)



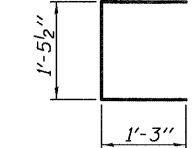
BAR S2(E)



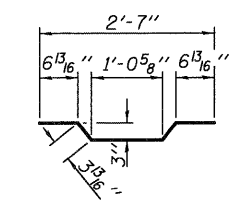
BAR S3(E)



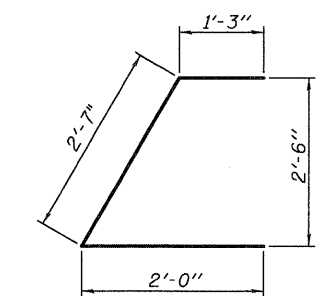
BAR S4(E)



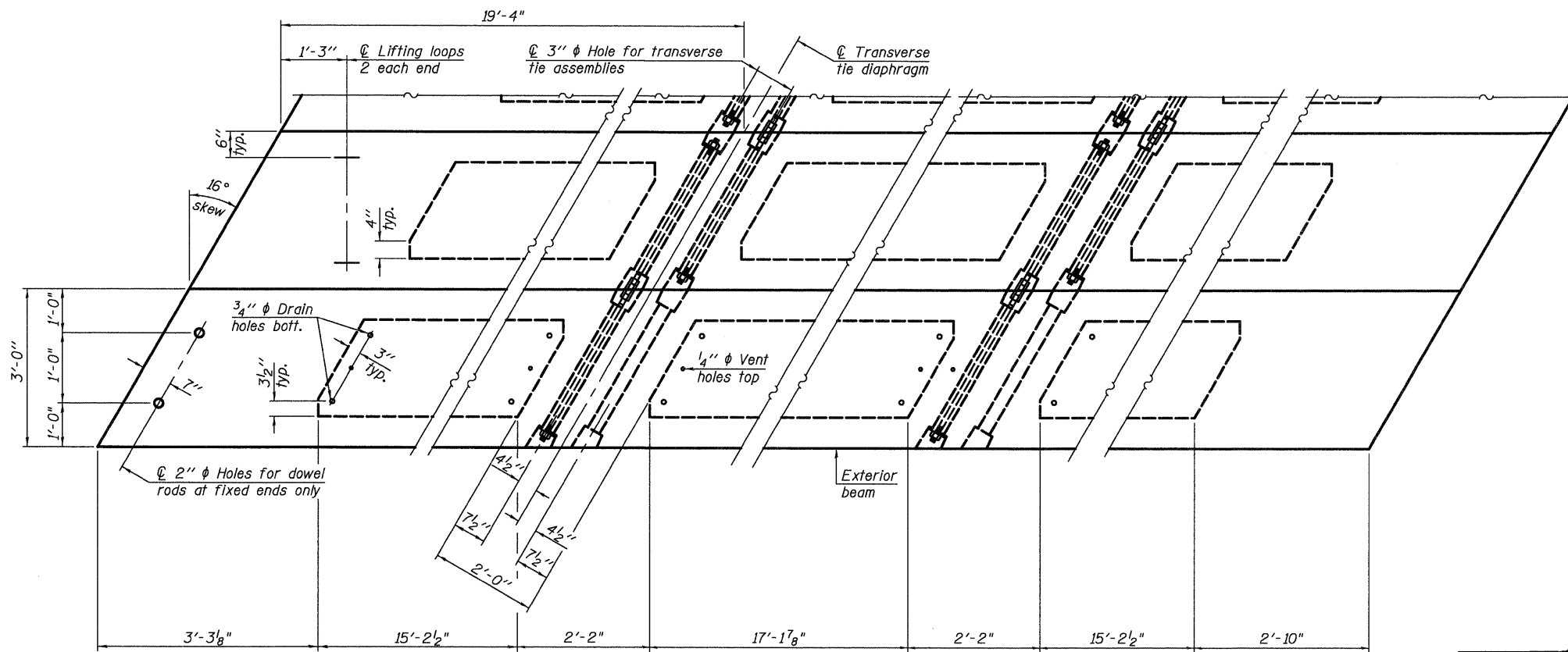
BAR U(E)



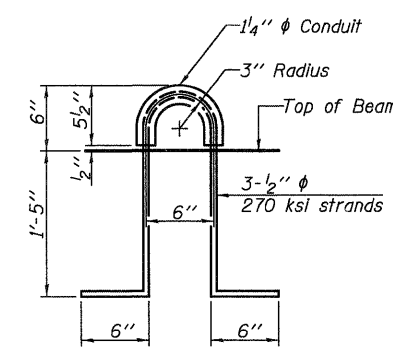
BAR A1(E)



BAR U1(E)



PLAN VIEW



LIFTING LOOP DETAIL

NOTES

- Prestressing steel shall be uncoated high strength, low relaxation 7-wire strand, Grade 270. The nominal diameter shall be 1/2" and the nominal cross-sectional area shall be 0.153 sq. in.
- The 1" rods in the transverse tie assembly shall be tightened to a snug fit and the threads set. Pockets on exterior faces of bridge shall be filled with grout after transverse tie assembly is in place.
- Reinforcement bars shall conform to ASTM A 706, Grade 60. (See Special Provisions).
- Two 5/8" fabric adjusting shims of the dimensions of the exterior bearing pad shall be provided for each bearing pad location.
- A minimum 2 1/2" diameter lifting pin shall be used to engage the lifting loops during handling.
- Corrosion Inhibitor, per Article 1020.05(b)(12) and 1021.06 of the Standard Specifications, shall be used in the concrete for precast prestressed concrete deck beams.
- Compressive strength of prestressed concrete, f'c, shall be 6000 psi.
- Compressive strength of prestressed concrete at release, f'ci, shall be 5000 psi.

Note:
Connect beams in pairs with the transverse tie configuration shown.

BILL OF MATERIAL

Precast Prestressed Conc. Deck Bms. (21" depth)	Sq. Ft.	6,960
---	---------	-------

I:\jobs\dwitt\count\7211.ch.10.over.n.fork.salt.creek\cadd\CADD_Sheets\0203900-00000.dgn

USER NAME = dhaberling	DESIGNED - FLL	REVISED
PLOT SCALE = @ 1/16" = 1' IN.	DRAWN - DLH	REVISED
PLOT DATE = 8/18/2009	CHECKED - CWC	REVISED
	DATE -	REVISED

WHKS & CO.
ENGINEERING

7018 KINGSMILL CT.,
SPRINGFIELD, IL
(217) 483-9457
DESIGN FIRM #184001036

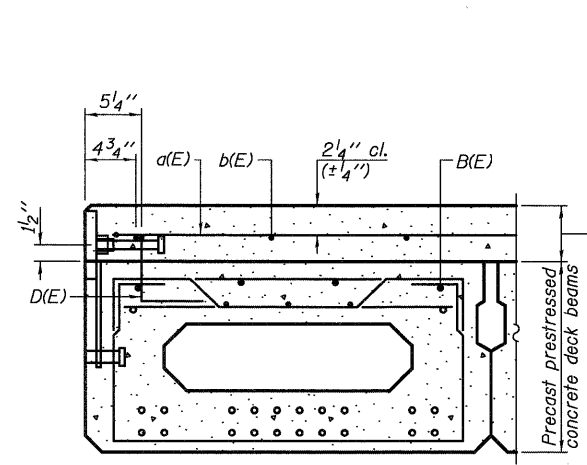
STATE OF ILLINOIS
DEPARTMENT OF TRANSPORTATION

21" X 36" PPC DECK BEAM DETAILS
CH 10 OVER NORTH FORK SALT CREEK

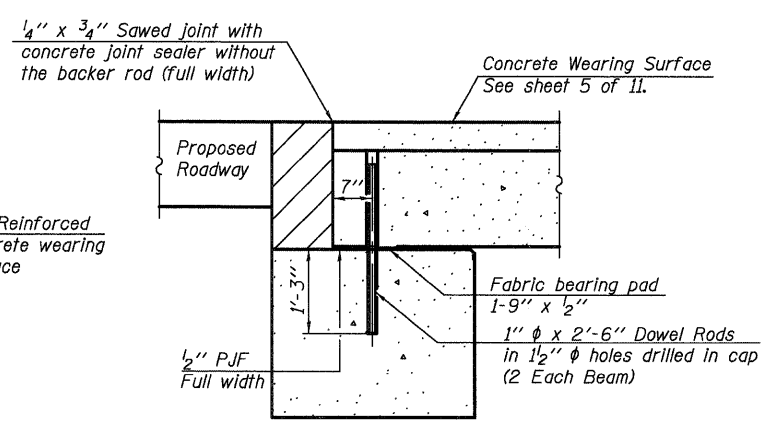
SCALE: SHEET NO. 3 OF 11 SHEETS STA.

F.A.S. RTE.	SECTION	COUNTY	TOTAL SHEETS	SHEET NO.
543	09-00025-01-BR	DEWITT	17	9
S.N. 020-3900		CONTRACT NO. 91423		
FED. ROAD DIST. NO.		ILLINOIS FED. AID PROJECT		

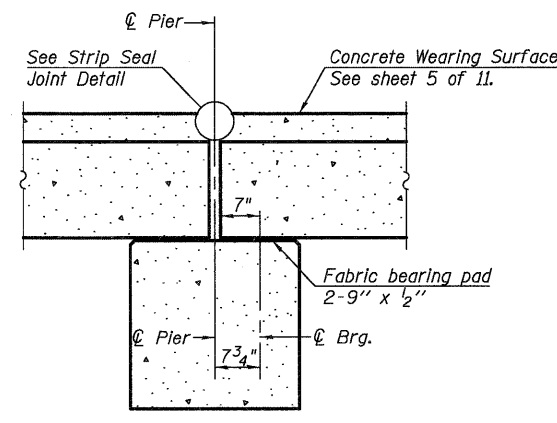
I:\jobs\devitt_county\7211 ch 10 over n fork salt creek\cadd\CADD Sheets\0203900-000000.dgn



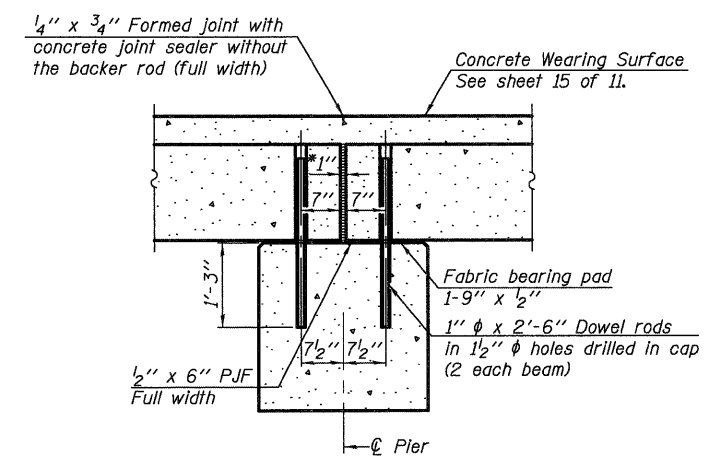
CROSS SECTION



SECTION THRU ABUTMENT



SECTION THRU PIERS 1 & 3

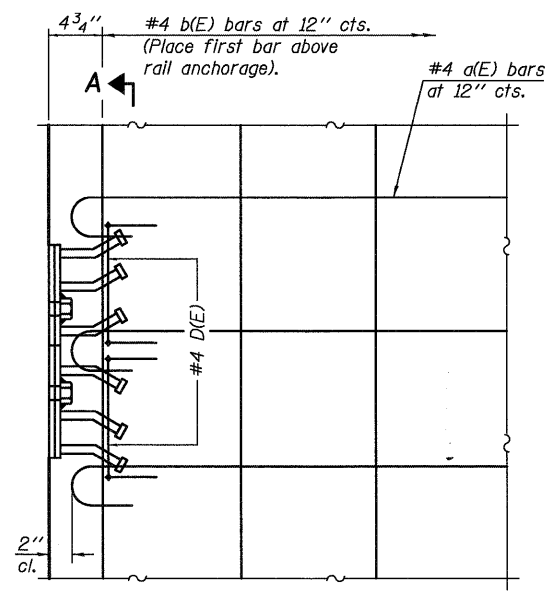


SECTION THRU PIER 2

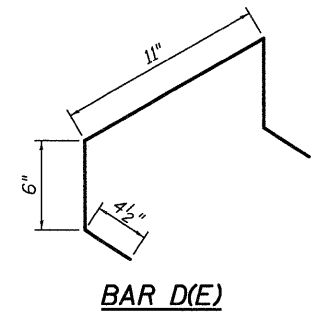
Concrete sealer shall be applied to all surfaces of Piers 1 and 3.

*1" Jt. shall be filled with non-shrink grout. 1" dimension may vary to accommodate tolerance in beam lengths.

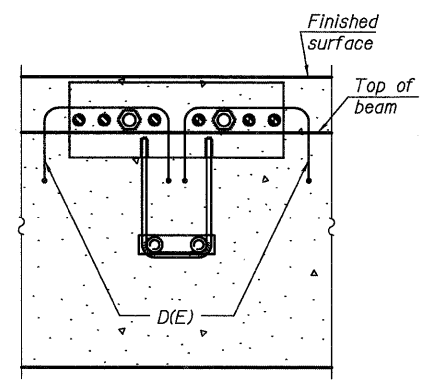
Notes:
 After beams have been erected, holes shall be drilled into substructure and anchor dowels placed. Dowel holes shall be filled with non-shrink grout to top of beam and allowed to cure min. 24 hrs. prior to grouting the shear keys.
 All horizontal dimensions are at right angles to beam ends. Hatched area to be poured after beams are in place. See sheet 3 of 11 for bearing pad details.



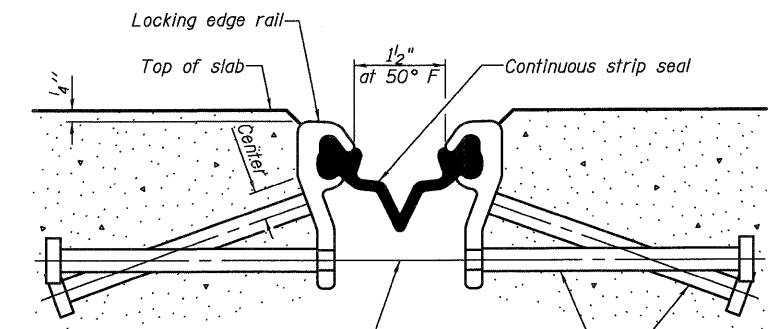
PLAN



BAR D(E)



SECTION A-A

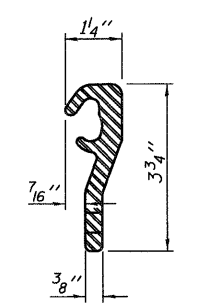


SECTION THRU STRIP SEAL JOINT FOR OVERLAY OVER DECK BEAMS

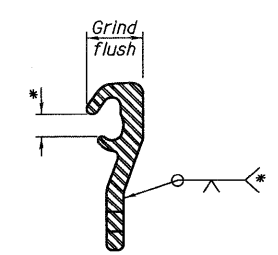
Place 1/2" dia x 6" granular or solid flux filled headed studs conforming to Article 1006.32 of the Std. Specs., automatically end welded at 1'-0" alt. cts.

Notes:
 The rail anchorage and bar D(E) shall be cast with the beam and the wearing surface shall be cast in the field. Cost of D(E) bar and rail anchorages are included with Precast Prestressed Concrete Deck Beams (21" Depth).
 Formwork necessary for the wearing surface may be secured utilizing the bottom rail anchorage inserts and/or additional inserts cast into the beam.
 Drilling into the beam will not be permitted.

Notes:
 The strip seal shall be made continuous and shall have a minimum thickness of 1/4". The configuration of the strip seal shall match the configuration of the Locking Edge Rails.
 The height and thickness of the Locking Edge Rails shown are minimum dimensions. The actual configuration of the Locking Edge Rails and matching strip seal may vary from manufacturer to manufacturer. Flanged edge rails will not be allowed.
 The inside of the Locking Edge Rail groove shall be free of weld residue. The manufacturer's recommended installation methods shall be followed.
 The joint opening and deck dimensions detailed on the superstructure are based on a rolled rail expansion joint. If the Contractor elects to use the welded rail expansion joint, the opening and deck dimensions shall be modified according to the dimensions detailed on this sheet. Required modifications shall be made at no additional cost to the State.
 All steel components shall be galvanized after fabrication according to Article 520.03 of the Standard Specifications.



LOCKING EDGE RAIL



LOCKING EDGE RAIL SPLICE

*Omit weld at seal opening.

USER NAME = dheber-lmg	DESIGNED - FLL	REVISED
PLOT SCALE = @ 1/16" = 1' IN.	DRAWN - DLH	REVISED
PLOT DATE = 8/18/2009	CHECKED - CWC	REVISED
	DATE -	REVISED

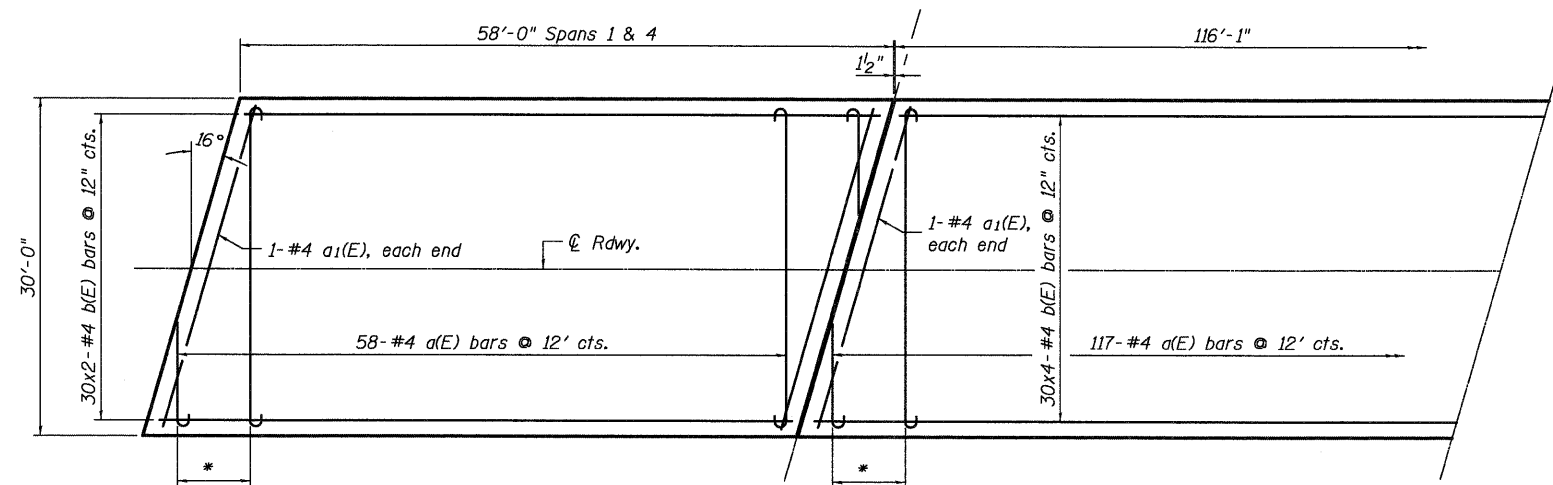
WHKS & CO.
 ENGINEERING
 7018 KINGSMILL CT.,
 SPRINGFIELD, IL
 (217) 483-9457
 DESIGN FIRM #184001036

STATE OF ILLINOIS
 DEPARTMENT OF TRANSPORTATION

SUPERSTRUCTURE DETAILS
CH 10 OVER NORTH FORK SALT CREEK
 SCALE: SHEET NO. 4 OF 11 SHEETS

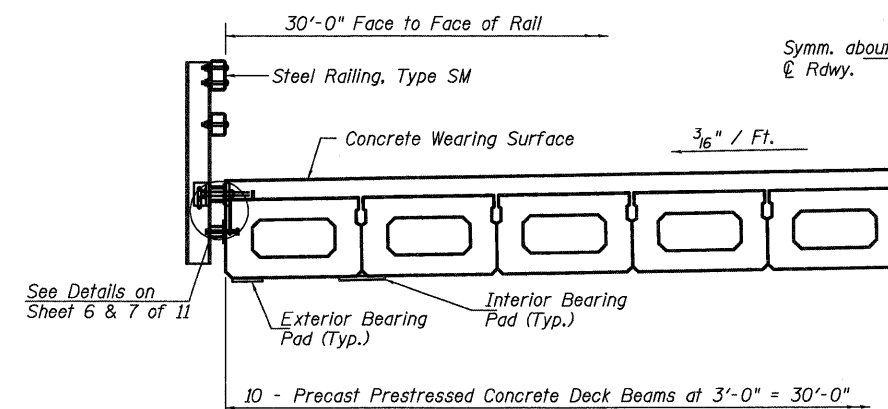
F.A.S. RTE. 543	SECTION 09-00025-01-BR	COUNTY DEWITT	TOTAL SHEETS 17	SHEET NO. 10
S.N. 020-3900		CONTRACT NO. 91423		
FED. ROAD DIST. NO.		ILLINOIS FED. AID PROJECT		

FILENAME: I:\jobs\dewitt county\7211 ch 10 over n fork salt creek\cadd\CADD Sheets\0203900-00000.dgn



PLAN - REINFORCED CONCRETE WEARING SURFACE

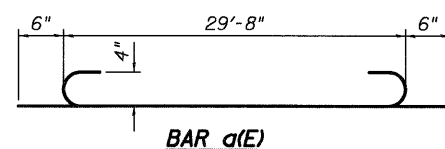
* Order bars full length, cut to fit skew, and use remainder at opposite end.



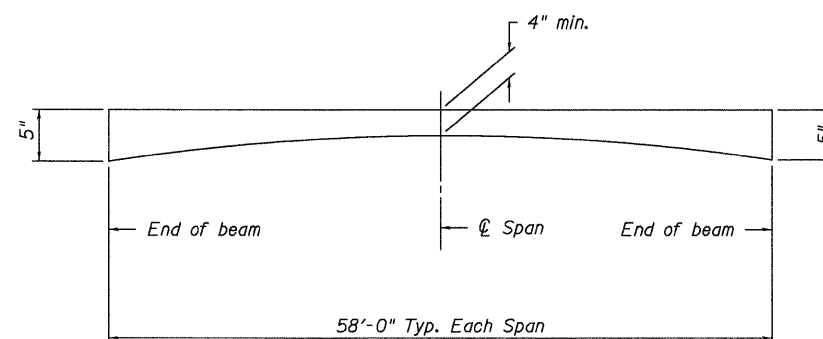
HALF-SECTION

MIN. BAR LAP

#4 bars = 1'-4"



BAR a(E)



APPROX. REINFORCED CONCRETE WEARING SURFACE PROFILE

BILL OF MATERIAL

Bar	No.	Size	Length	Shape
a(E)	233	#4	30'-8"	
a1(E)	6	#4	30'-9"	
b(E)	240	#4	30'-0"	
Reinforcement Bars, Epoxy Coated			Pound	9710
Concrete Wearing Surface, 5"			Sq. Yd.	773

USER NAME = dheber1ng	DESIGNED - FLL	REVISED
PLOT SCALE = @1 1/16" = 1' IN.	DRAWN - DLH	REVISED
PLOT DATE = 8/18/2009	CHECKED - CWC	REVISED
	DATE -	REVISED

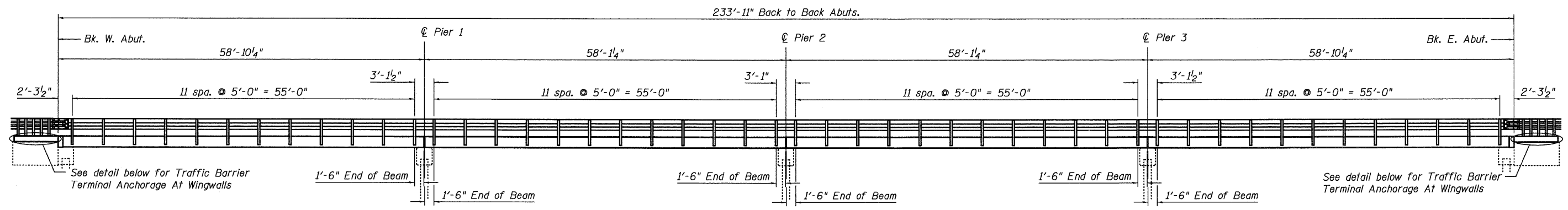
WHKS & CO.
ENGINEERING

7018 KINGSMILL CT.,
SPRINGFIELD, IL
(217) 483-9457
DESIGN FIRM #184001036

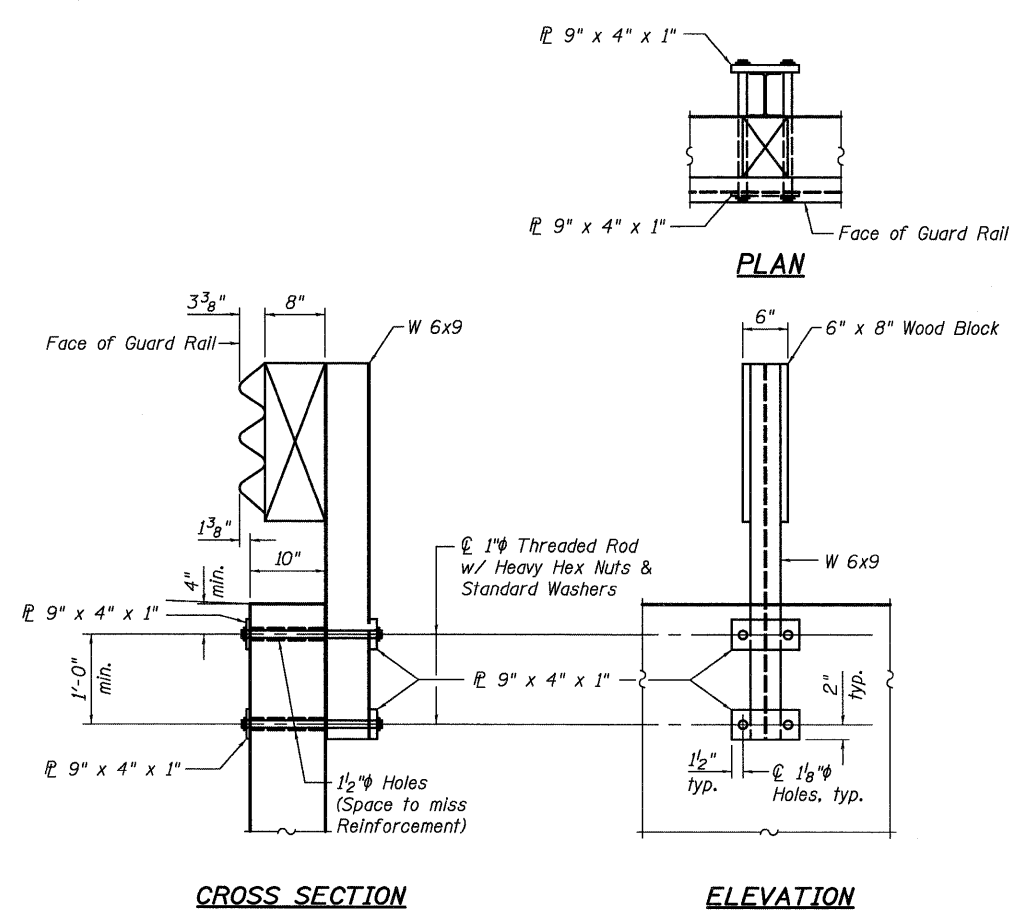
STATE OF ILLINOIS
DEPARTMENT OF TRANSPORTATION

SUPERSTRUCTURE DETAILS		
CH 10 OVER NORTH FORK SALT CREEK		
SCALE:	SHEET NO. 5 OF 11 SHEETS	C STA.

F.A.S. RTE.	SECTION	COUNTY	TOTAL SHEETS	SHEET NO.
543	09-00025-01-BR	DEWITT	17	11
S.N. 020-3900		CONTRACT NO. 91423		
FED. ROAD DIST. NO.		ILLINOIS FED. AID PROJECT		

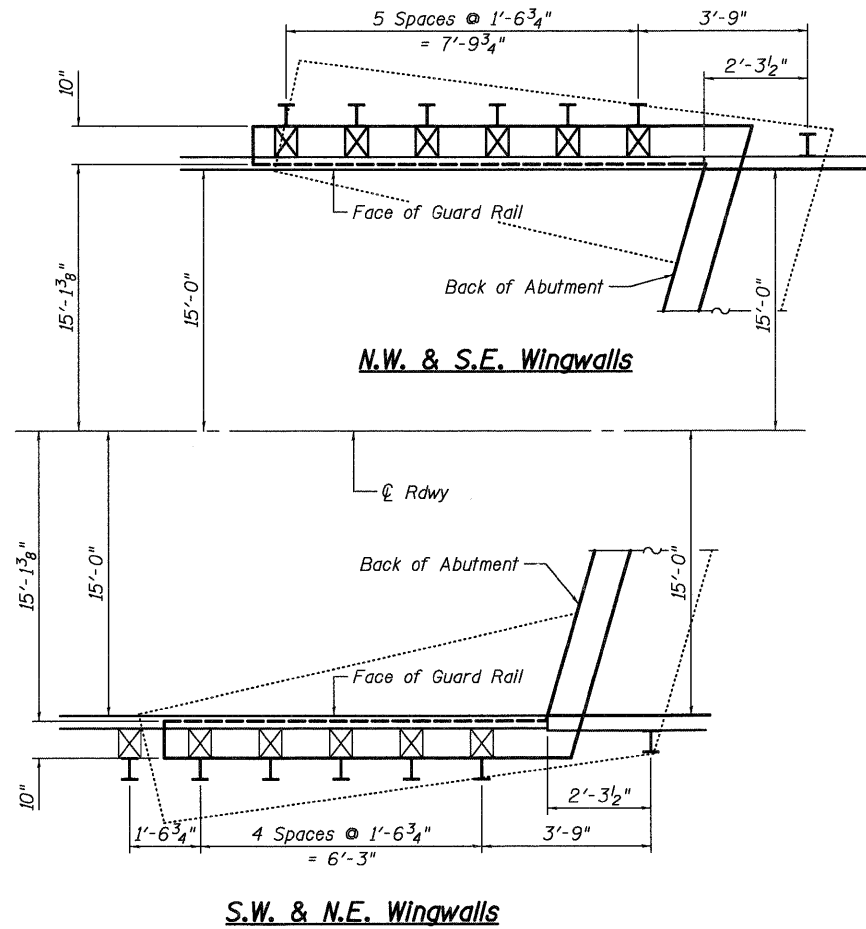


RAIL POST SPACING



CROSS SECTION

ELEVATION



N.W. & S.E. Wingwalls

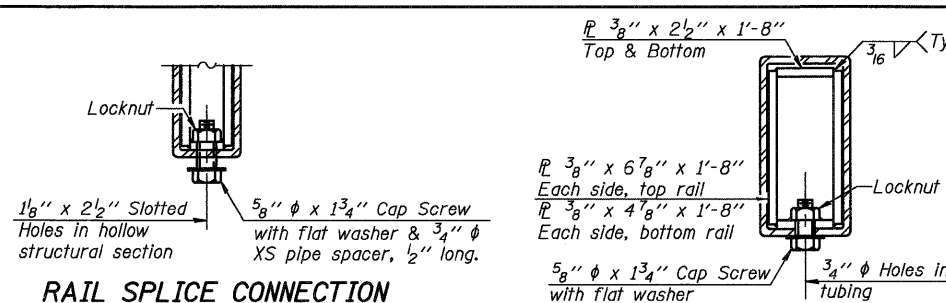
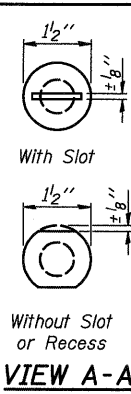
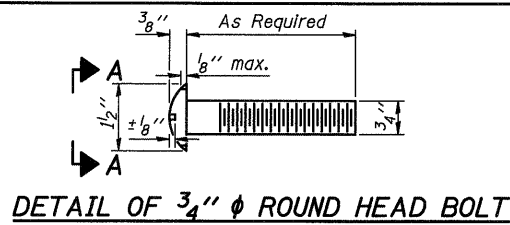
S.W. & N.E. Wingwalls

TRAFFIC BARRIER TERMINAL ANCHORAGE AT WINGWALLS

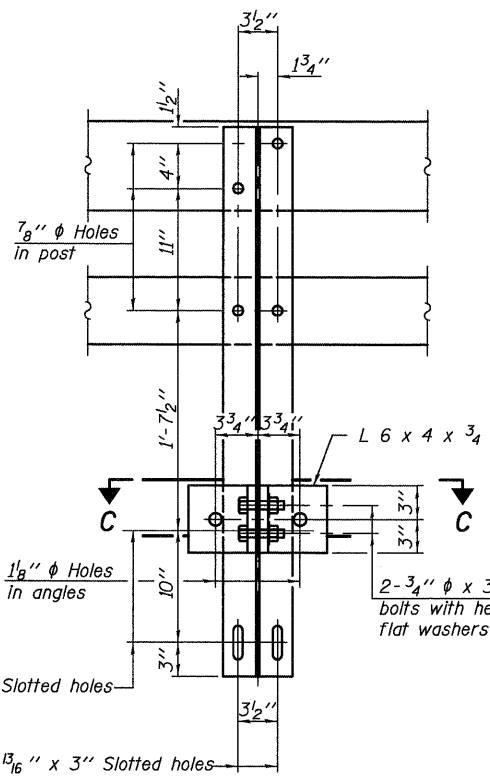
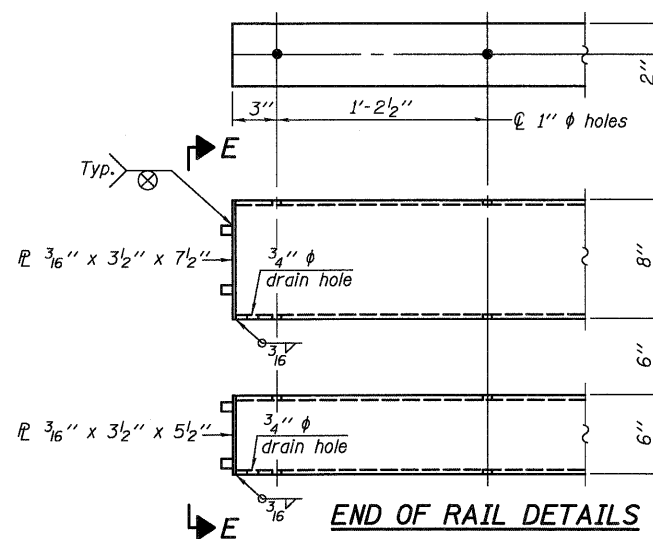
Note: Cost of mounting traffic barrier terminal to wingwalls is included with Traffic Barrier Terminal, Type 6A (See roadway plans and Highway Standards for additional details and quantity).
 The bolts, nuts, and plates connecting the traffic barrier terminal to the wingwalls shall be galvanized according to Article 1006.25 of the Standard Specifications. Cost included with Traffic Barrier Terminal, Type 6A

I:\Jobs\devitt county\7211 ch 10 over n fork salt creek.cadd\CADD Sheets\0203900-00000.dgn

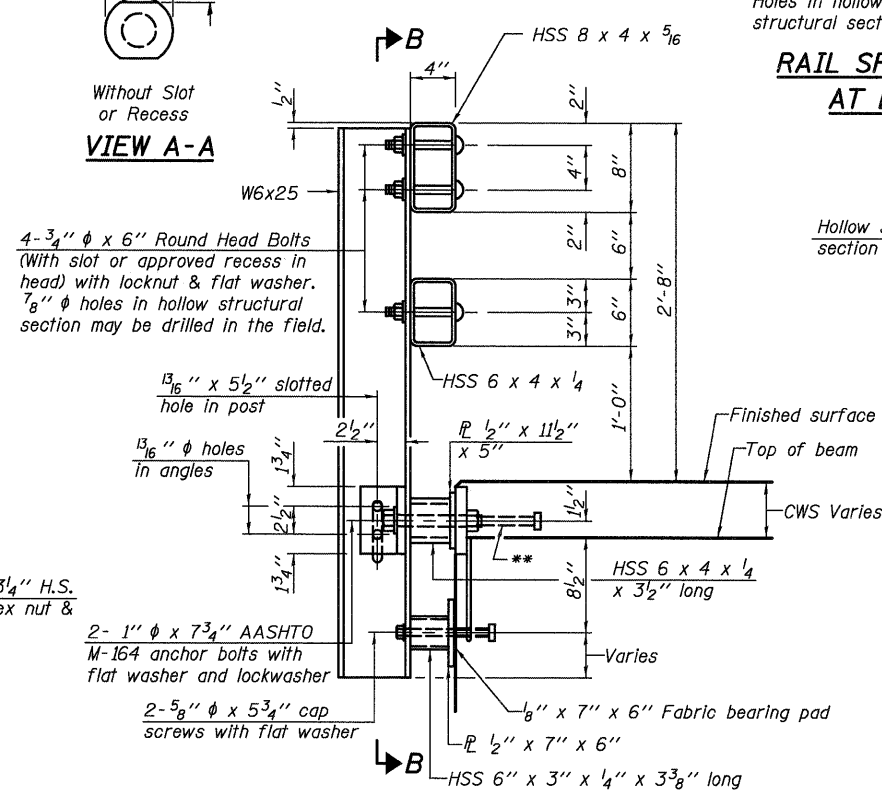
USER NAME = dheberling	DESIGNED - FLL	REVISED		7018 KINGSMILL CT., SPRINGFIELD, IL (217) 483-9457 DESIGN FIRM #184001036	STATE OF ILLINOIS		RAILING DETAILS		F.A.S. RTE.	SECTION	COUNTY	TOTAL SHEETS	SHEET NO.
PLOT SCALE = @ 1/16" = 1' IN.	DRAWN - DLH	REVISED			DEPARTMENT OF TRANSPORTATION		CH 10 OVER NORTH FORK SALT CREEK		543	09-00025-01-BR	DEWITT	17	12
PLOT DATE = 8/18/2009	CHECKED - CWC	REVISED							S.N. 020-3900		CONTRACT NO. 91423		
					SCALE:		SHEET NO. 6 OF 11 SHEETS		ILLINOIS FED. AID PROJECT				



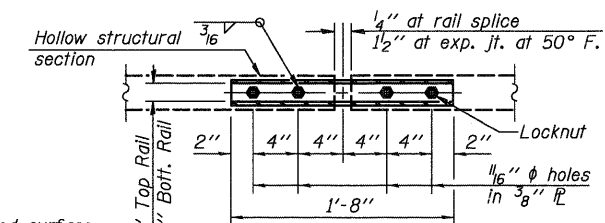
SECTION AT RAIL SPLICE



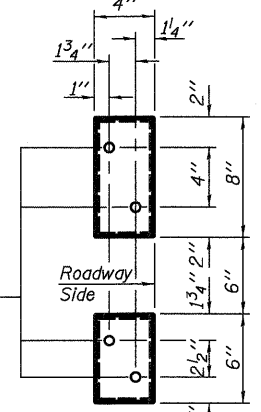
SECTION B-B



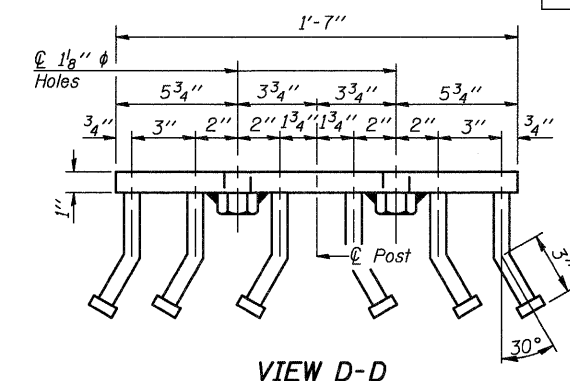
SECTION AT RAIL POST



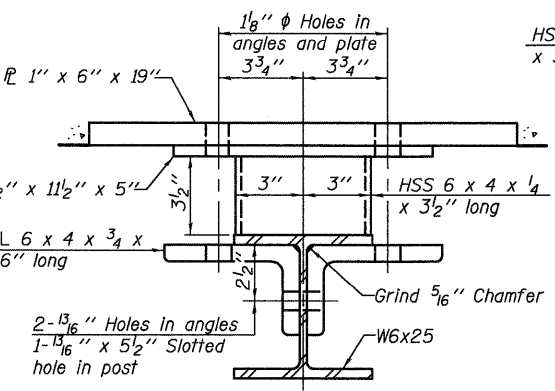
PLAN-BOTT. SPLICE P TYPICAL



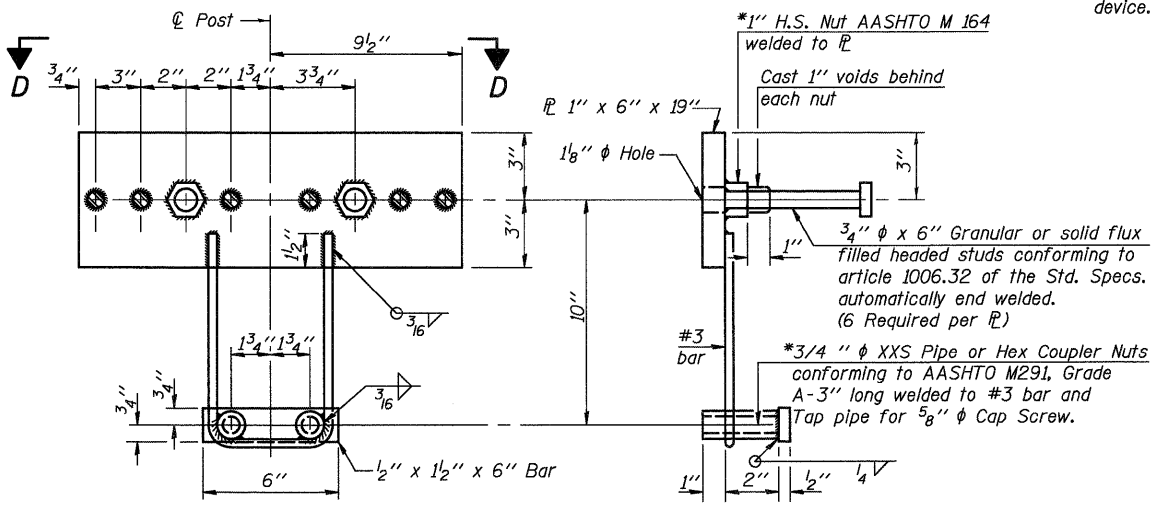
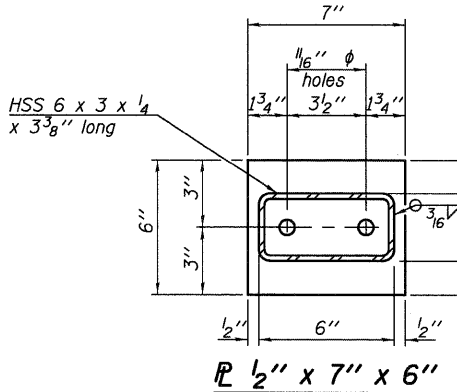
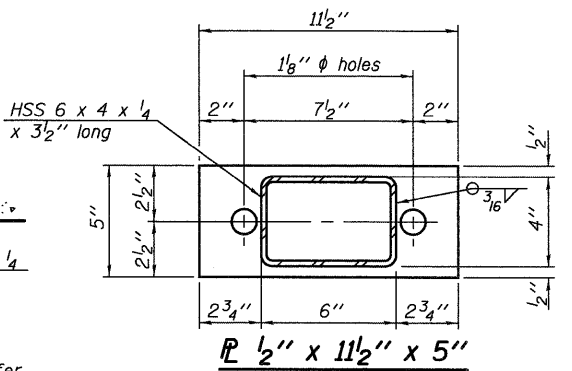
VIEW E-E



VIEW D-D



SECTION C-C



ANCHOR DEVICE

Notes:
 All field drilled holes shall be coated with an approved zinc rich paint before erection.
 For multi-span bridges, sufficient 1/4" x 6" x 1'-2" galvanized steel shims shall be provided to align rail between adjacent spans. Cost included with Steel Railing, Type SM.
 Steel rail elements shall be galvanized according to Article 509.05 of the Standard Specifications.
 ** The studs of the anchor devices shall be placed below the top reinforcement bars and the outermost longitudinal reinforcement bar shall be placed directly above the studs of the rail post anchor device.

BILL OF MATERIAL

Item	Unit	Quantity
Steel Railing, Type SM	Foot	468

FILENAME: I:\Jobs\devitt county\7211 ch 10 over n fork salt creek\cadd\CADD Sheets\0203900-00000.dgn

R-34CWS 10-1-08 (6'-3" Maximum Post Spacing) (5" minimum to 7'8" maximum CWS thickness)

USER NAME = dheberling	DESIGNED - FLL	REVISED
PLOT SCALE = @1 1/16" = 1' IN.	DRAWN - DLH	REVISED
PLOT DATE = 8/18/2009	CHECKED - CWC	REVISED
	DATE -	REVISED

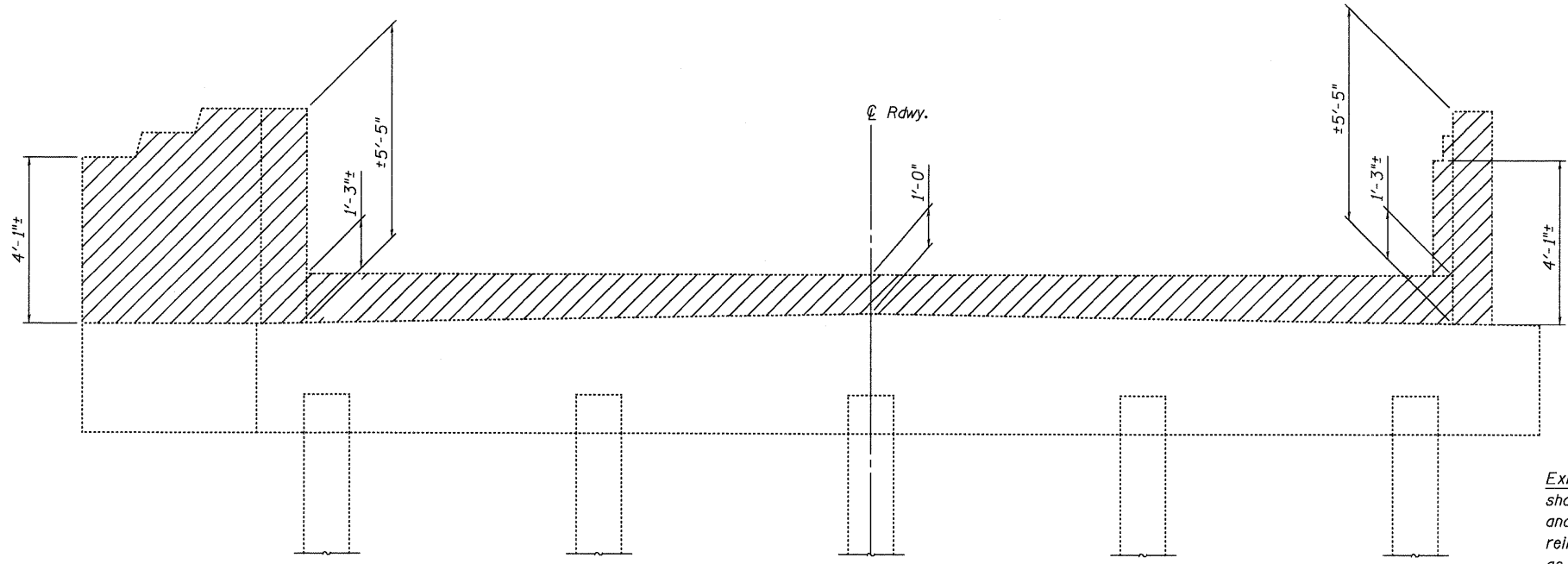
WHKS & CO.
 ENGINEERING
 7018 KINGSMILL CT.,
 SPRINGFIELD, IL
 (217) 483-9457
 DESIGN FIRM #184001036

STATE OF ILLINOIS
 DEPARTMENT OF TRANSPORTATION

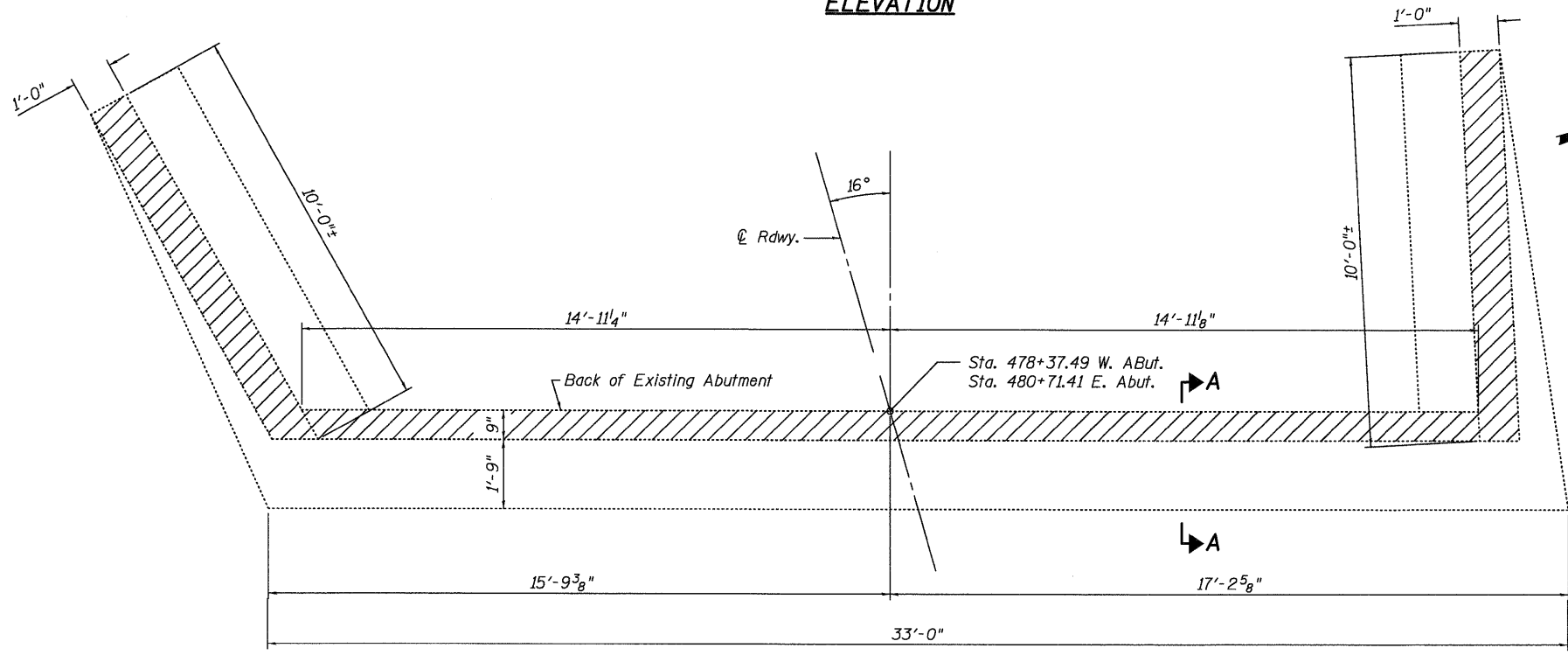
STEEL RAILING, TYPE SM WITH CONC. WEARING SURFACE
 CH 10 OVER NORTH FORK SALT CREEK
 SCALE: SHEET NO. 7 OF 11 SHEETS

F.A.S. RTE. 543	SECTION 09-00025-01-BR	COUNTY DEWITT	TOTAL SHEETS 17	SHEET NO. 13
S.N. 020-3900		CONTRACT NO. 91423		
FED. ROAD DIST. NO.		ILLINOIS FED. AID PROJECT		

FILENAME: I:\jobs\de Witt county\7211 ch 10 over n fork salt creek\cadd\CADD Sheets\0203900-00000.dgn



ELEVATION



PLAN

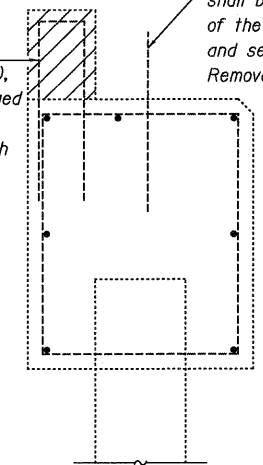
West Abutment Shown - East Abutment Similar

LEGEND

- Concrete Removal

Existing vertical reinforcing steel in backwall shall be cleaned, straightened, cut (if required), and incorporated into new construction. Damaged reinforcing steel shall be replaced or removed as directed by the Engineer. Cost included with Concrete Structures.

Existing Dowel Rods at the Abutments shall be burned off flush with the top of the existing concrete, ground smooth, and sealed with epoxy. Cost included with Removal of Existing Superstructures.



SECTION A-A

**BILL OF MATERIAL
TWO ABUTMENTS**

Item	Unit	Quantity
Concrete Removal	Cu. Yd.	8.9

Notes: Existing Vertical Wingwall Reinforcement shall be burned off flush with the top of the existing concrete, ground smooth, and sealed with epoxy. Cost included with Concrete Removal.
Cost for excavation and backfilling required for concrete removal is included with Concrete Removal.

USER NAME = dheberling	DESIGNED - FLL	REVISED
PLOT SCALE = 01 1/16" = 1' IN.	DRAWN - DLH	REVISED
PLOT DATE = 6/18/2009	CHECKED - CWC	REVISED
	DATE -	REVISED

WHKS & CO.
ENGINEERING
7018 KINGSMILL CT.,
SPRINGFIELD, IL
(217) 483-9457
DESIGN FIRM #184001036

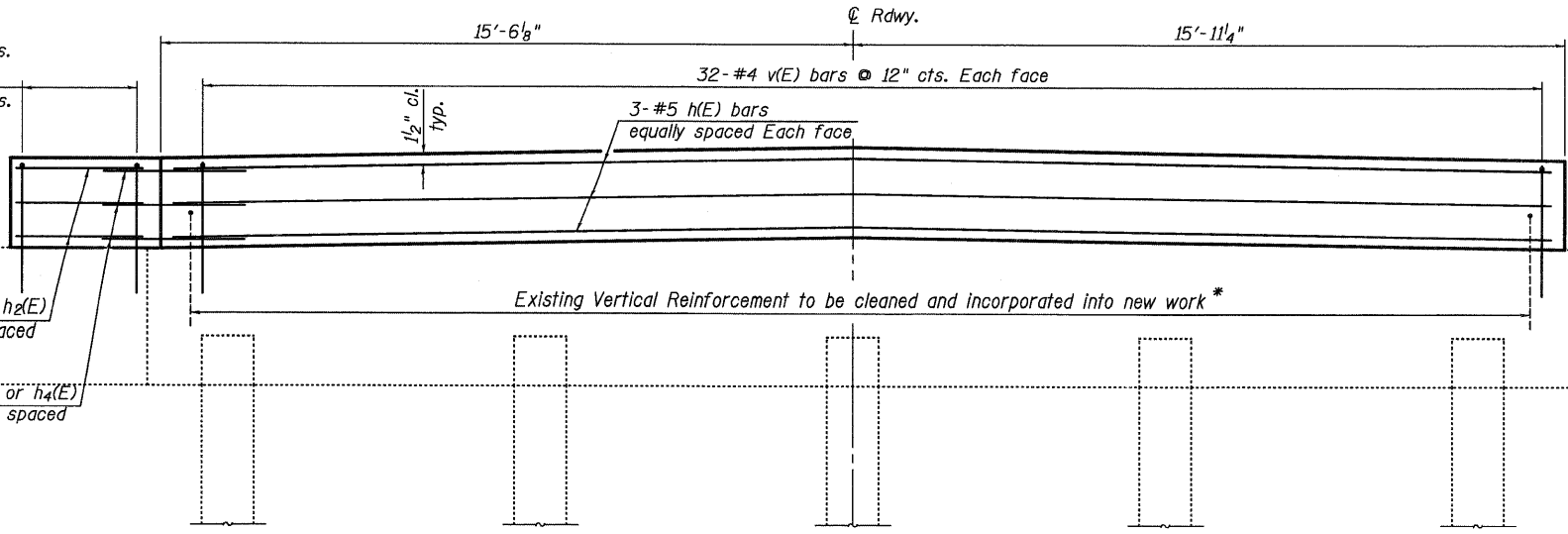
**STATE OF ILLINOIS
DEPARTMENT OF TRANSPORTATION**

CONCRETE REMOVAL AT ABUTMENTS	
CH 10 OVER NORTH FORK SALT CREEK	
SCALE:	STATION
SHEET NO. 8 OF 11 SHEETS	± STA.

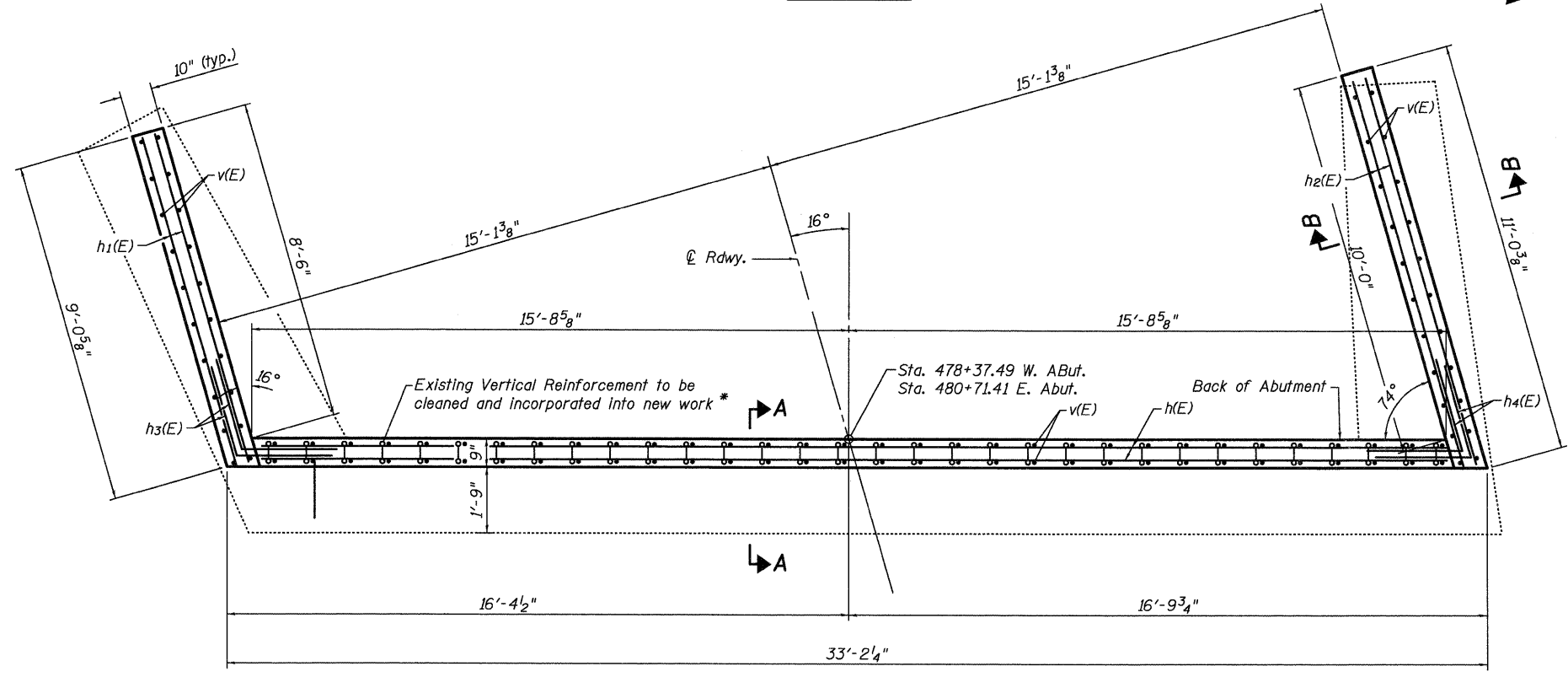
F.A.S. RTE.	SECTION	COUNTY	TOTAL SHEETS	SHEET NO.
543	09-00025-01-BR	DEWITT	17	14
S.N. 020-3900		CONTRACT NO. 91423		
FED. ROAD DIST. NO.		ILLINOIS FED. AID PROJECT		

FILENAME: I:\jobs\devitt county\7211 ch 10 over n fork salt creek\cadd\CADD Sheets\0203900-00000.dgn

20- #4 V(E) bars @ 12" cts.
(S.W & N.E. Wingwalls)
22- #4 V(E) bars @ 12" cts.
(N.W & S.E. Wingwalls)

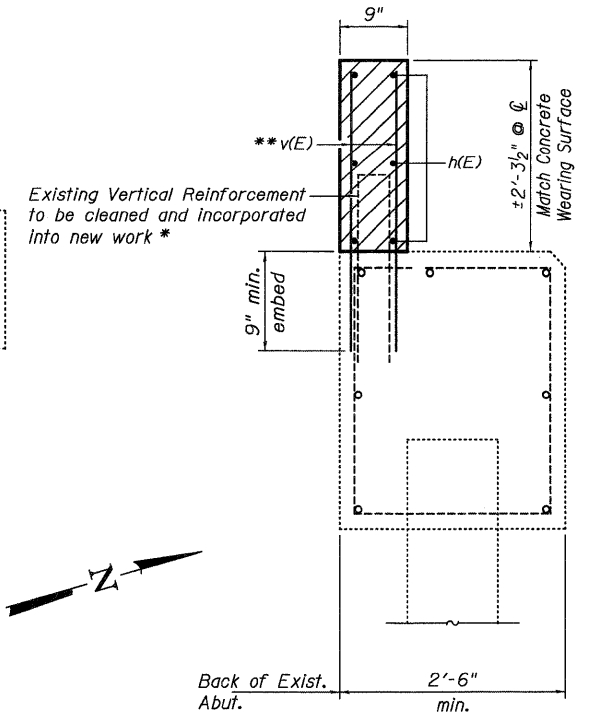


ELEVATION

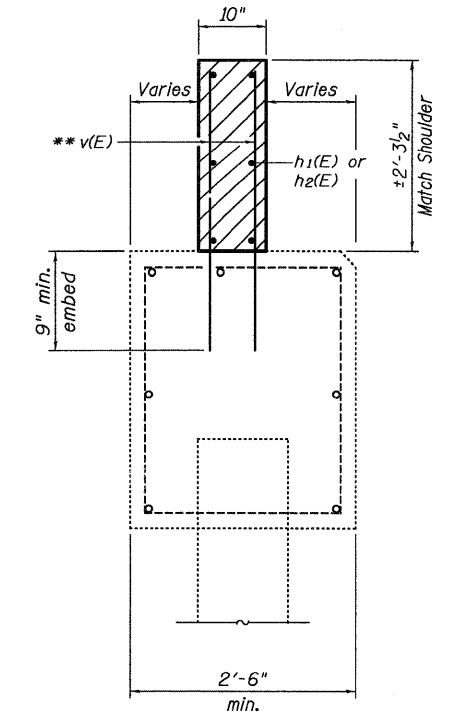


PLAN

West Abutment Shown - East Abutment Similar

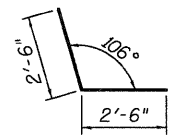


SECTION A-A

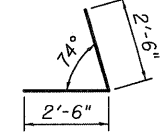


SECTION B-B

Note: Hatched areas to be poured after wearing surface is in place.
* Cost included with Concrete Structures.
** Drill and epoxy grout according to Section 584 of the Standard Specs. Cost Included with Concrete Structures.



BAR h3(E)



BAR h4(E)

**BILL OF MATERIAL
TWO ABUTMENTS**

Bar	No.	Size	Length	Shape
h(E)	12	#4	31'-1"	—
h1(E)	12	#4	8'-8"	—
h2(E)	12	#4	10'-8"	—
h3(E)	12	#4	5'-0"	L
h4(E)	12	#4	5'-0"	L
V(E)	212	#4	3'-0"	—
Reinforcement Bars, Epoxy Coated			Pound	910
Concrete Structures			Sq. Yd.	7.4

USER NAME = dheber.lng	DESIGNED - FLL	REVISED
PLOT SCALE = @ 1/16" = 1' IN.	DRAWN - DLH	REVISED
PLOT DATE = 8/18/2009	CHECKED - CWC	REVISED
	DATE -	REVISED

WHKS & CO.
ENGINEERING

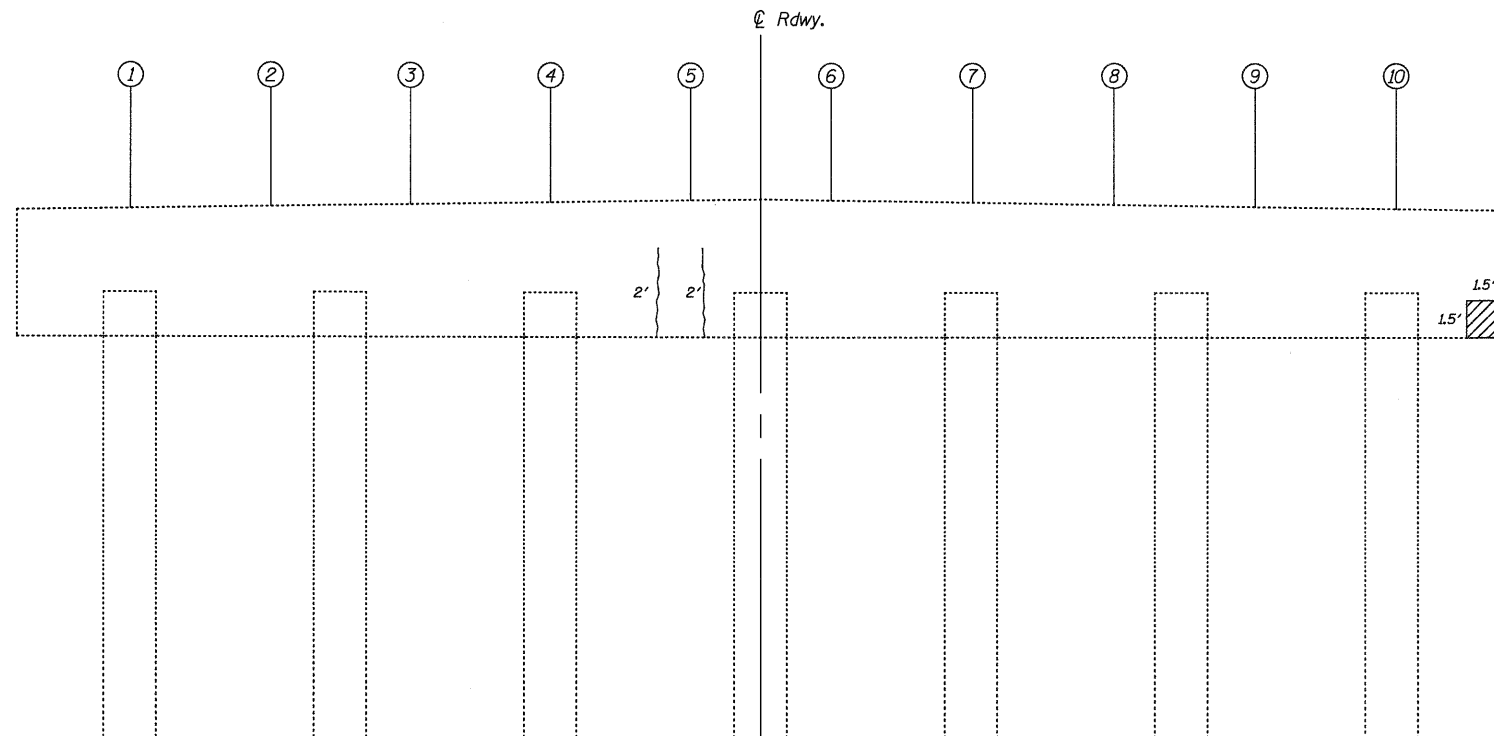
7018 KINGSMILL CT.,
SPRINGFIELD, IL
(217) 483-9457
DESIGN FIRM #184001036

**STATE OF ILLINOIS
DEPARTMENT OF TRANSPORTATION**

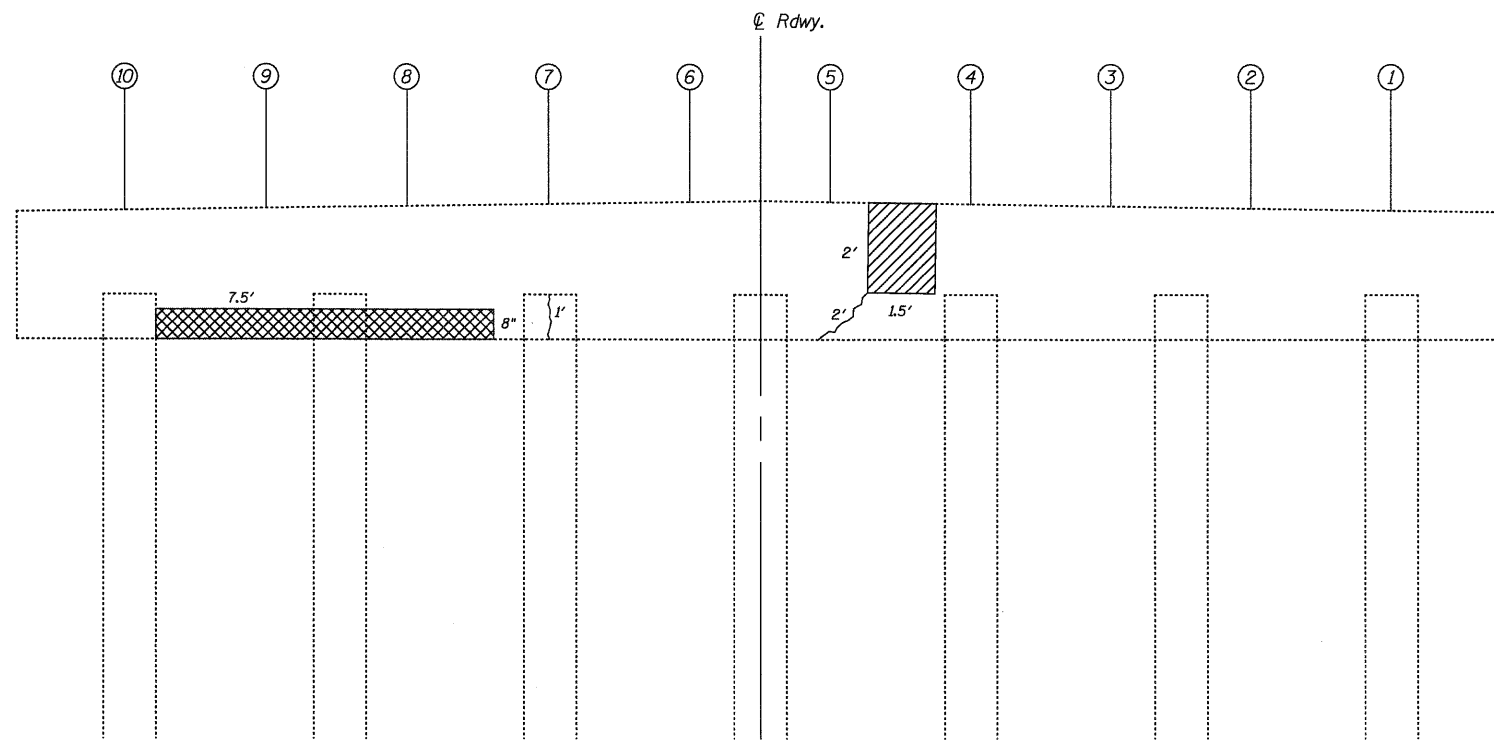
ABUTMENTS		
CH 10 OVER NORTH FORK SALT CREEK		
SCALE:	SHEET NO. 9 OF 11 SHEETS	STA.

F.A.S. RTE.	SECTION	COUNTY	TOTAL SHEETS	SHEET NO.
543	09-00025-01-BR	DEWITT	17	15
S.N. 020-3900		CONTRACT NO. 91423		
FED. ROAD DIST. NO.	ILLINOIS FED. AID PROJECT			

I:\jobs\devitt county\7211 ch 10 over n fork salt creek\cadd\CADD Sheets\0203900-00000.dgn



PIER 1 - WEST FACE
(Looking East)



PIER 1 - EAST FACE
(Looking West)

LEGEND

- Epoxy Crack Injection
- Structural Repair of Concrete (Depth greater than 5")
- Structural Repair of Concrete (Depth equal to or less than 5")

BILL OF MATERIAL

Item	Unit	Quantity
Epoxy Crack Injection	Foot	7.0
Structural Repair of Concrete (Depth greater than 5")	Sq. Ft.	5.0
Structural Repair of Concrete (Depth equal to or less than 5")	Sq. Ft.	5.5

USER NAME = dhaberling	DESIGNED - FLL	REVISED
	DRAWN - DLH	REVISED
PLOT SCALE = @ 1/16" = 1' / IN.	CHECKED - CWC	REVISED
PLOT DATE = 8/18/2009	DATE -	REVISED



7018 KINGSMILL CT.
SPRINGFIELD, IL
(217) 483-9457
DESIGN FIRM #184001036

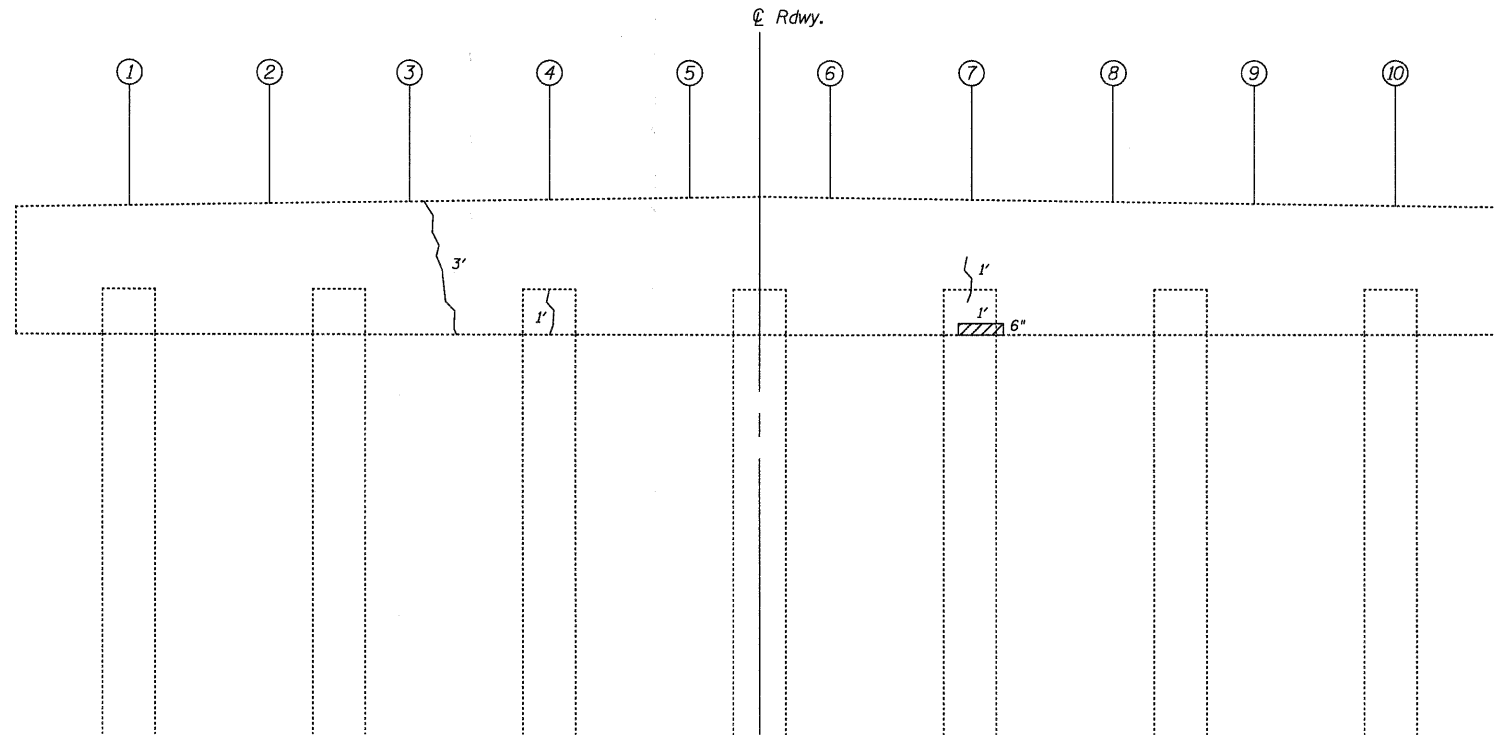
STATE OF ILLINOIS
DEPARTMENT OF TRANSPORTATION

PIER 1 REPAIRS

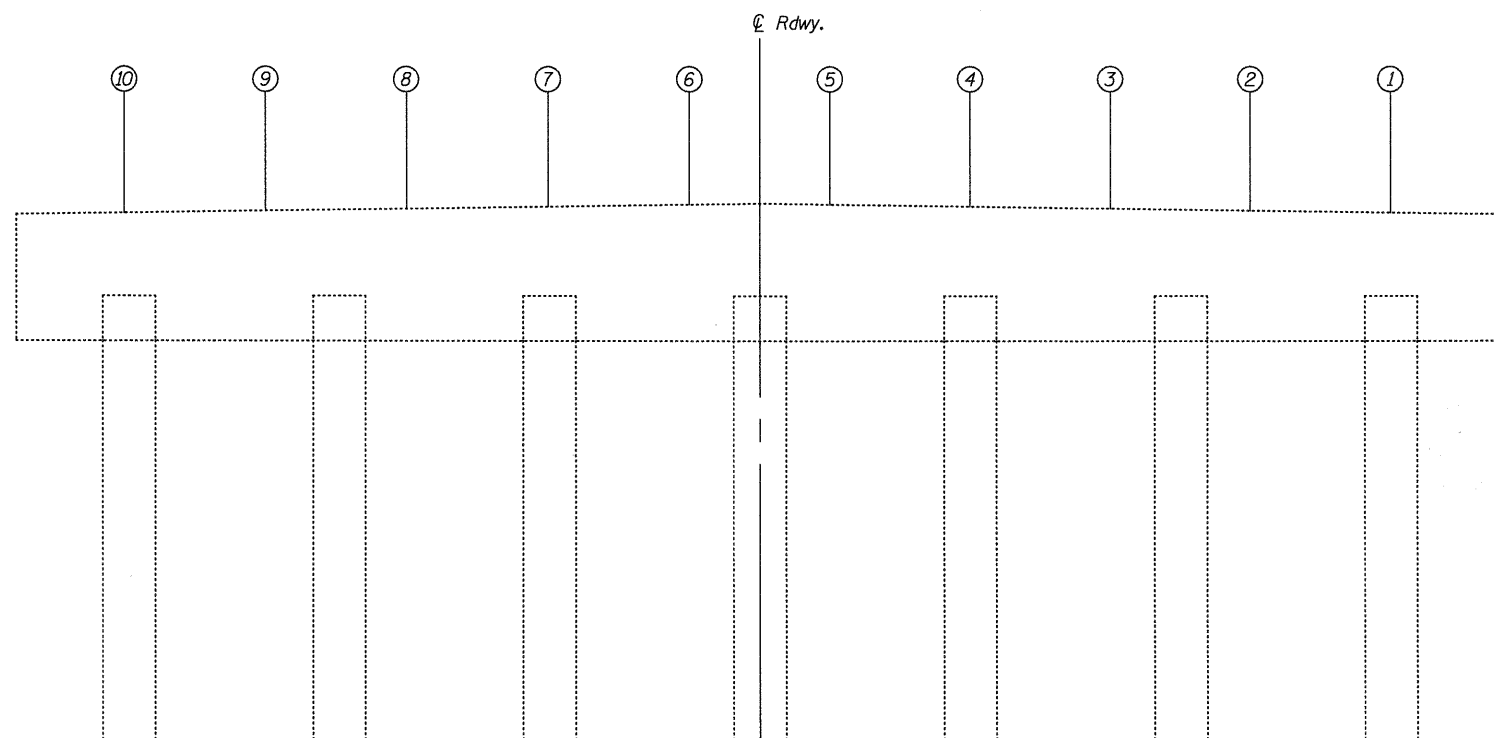
CH 10 OVER NORTH FORK SALT CREEK

SCALE: SHEET NO. 10 OF 11 SHEETS STA.

F.A.S. RTE.	SECTION	COUNTY	TOTAL SHEETS	SHEET NO.
543	09-00025-01-BR	DEWITT	17	16
S.N. 020-3900		CONTRACT NO. 91423		
FED. ROAD DIST. NO.		ILLINOIS FED. AID PROJECT		



PIER 2 - WEST FACE
(Looking East)



PIER 2 - EAST FACE
(Looking West)

LEGEND

- Epoxy Crack Injection
- Structural Repair of Concrete (Depth equal to or less than 5")

BILL OF MATERIAL

Item	Unit	Quantity
Epoxy Crack Injection	Foot	5.0
Structural Repair of Concrete (Depth equal to or less than 5")	Sq. Ft.	0.5

I:\jobs\dewitt county\7211 ch 10 over n fork salt creek\cadd\CADD Sheets\0203900-00000.dgn

USER NAME = dheber.lmg	DESIGNED - FLL	REVISED
PLOT SCALE = @1 1/16 " / IN.	DRAWN - DLH	REVISED
PLOT DATE = 8/18/2009	CHECKED - CWC	REVISED
	DATE -	REVISED

WHKS & CO.
ENGINEERING

7018 KINGSMILL CT.,
SPRINGFIELD, IL
(217) 483-9457
DESIGN FIRM #184001036

STATE OF ILLINOIS
DEPARTMENT OF TRANSPORTATION

PIER 2 REPAIRS
CH 10 OVER NORTH FORK SALT CREEK

SCALE: SHEET NO. 11 OF 11 SHEETS STA.

F.A.S. RTE.	SECTION	COUNTY	TOTAL SHEETS	SHEET NO.
543	09-00025-01-BR	DEWITT	17	17
S.N. 020-3900		CONTRACT NO. 91423		
FED. ROAD DIST. NO.		ILLINOIS FED. AID PROJECT		