

F.A.S. RTE.	SECTION	COUNTY	TOTAL SHEETS	SHEET NO.
721	08-00128-00-BR	MONTGOMERY	22	1
ILLINOIS CONTRACT NO. 03496				

- INDEX OF SHEETS**
- COVER SHEET
  - SUMMARY OF QUANTITIES
  - TYPICAL SECTIONS AND GENERAL NOTES
  - DETOUR PLAN
  - EROSION CONTROL PLAN
  - PLAN AND PROFILE
  - GENERAL PLAN AND ELEVATION
  - 8.-9. PPC DECK BEAM SUPERSTRUCTURE
  - 10.-11. 17"x36" PPC DECK BEAM
  12. 17"x36" PPC DECK BEAM DETAILS
  - STEEL RAILING, TYPE S-1
  - ABUTMENTS
  - PIERS
  - HP PILE DETAILS
  - 17.-18. SOIL BORINGS
  - 19.-22. CROSS SECTIONS

**HIGHWAY STANDARDS:** 000001-05  
 280001-04  
 515001-03  
 701901-01  
 BLR 21-8  
 BLR 22-6  
 BLR 23-3  
 BLR 26-1  
 BLR 27-1

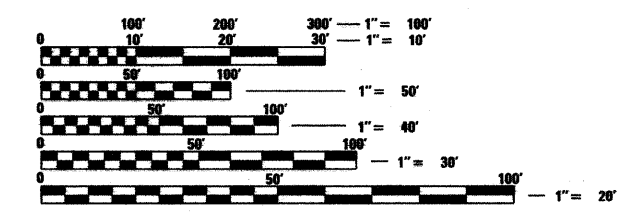
**DESIGN CLASSIFICATION**  
 Class: Major Collector  
 A.D.T.: 663 (2009), 843 (2029)  
 A.D.T.T.: ±5%  
 Design Speed: 40 mph

**UTILITY COMPANIES**

Telephone: Frontier Communications (402)250-1095  
 Consolidated Communications (800)500-9000

Gas & Electric: Ameren IP (618)236-6207

Water: Montgomery County Water Co. (618)252-8111



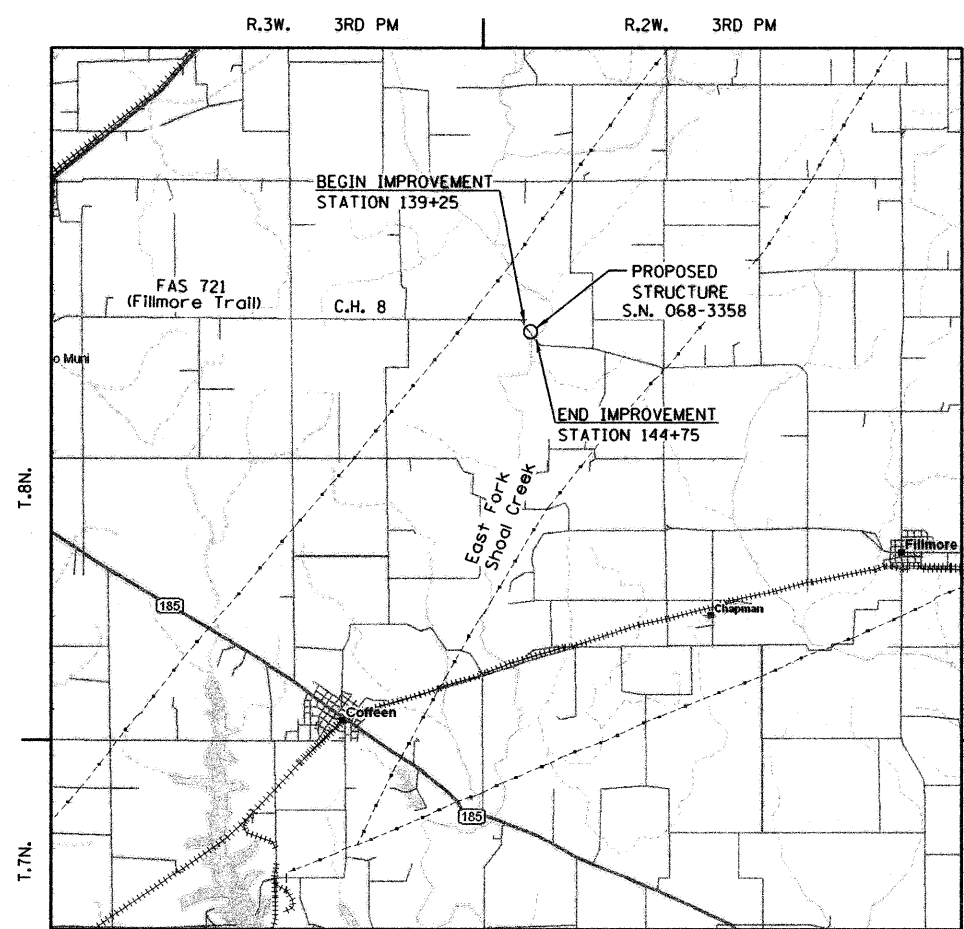
FULL SIZE PLANS HAVE BEEN PREPARED USING STANDARD ENGINEERING SCALES. REDUCED SIZED PLANS WILL NOT CONFORM TO STANDARD SCALES. IN MAKING MEASUREMENTS ON REDUCED PLANS, THE ABOVE SCALES MAY BE USED.

**J.U.L.I.E.**  
 JOINT UTILITY LOCATION INFORMATION FOR EXCAVATION  
 1-800-892-0123  
 OR 811

**PROJECT ENGINEER  
 PROJECT MANAGER**

**CONTRACT NO. 93496**

**STATE OF ILLINOIS**  
**AMERICAN RECOVERY AND REINVESTMENT PROGRAM**  
**PROPOSED BRIDGE PLANS**  
**C.H. 8 /F.A.S. 721 (FILLMORE TRAIL)**  
**SECTION 08-00128-00-BR**  
**PROJECT ARA-0721(219)**  
**MONTGOMERY COUNTY HIGHWAY DEPARTMENT**  
**MONTGOMERY COUNTY**  
**JOB NO. C-96-252-09**

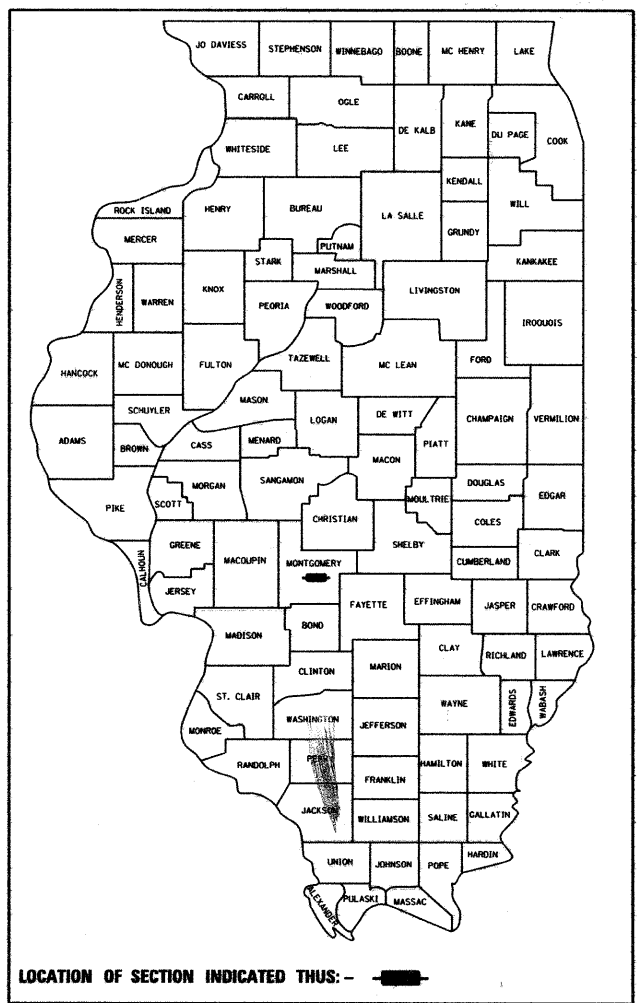


**LOCATION MAP**  
 GROSS LENGTH = 550.00 FT. = 0.104 MILE



**EXISTING STRUCTURE:**  
 THREE SPAN STEEL GIRDER BRIDGE WITH 7" CAST-IN-PLACE CONCRETE DECK SUPPORTED BY UNENCASED STEEL AND TIMBER PILES  
 22'-0" ROADWAY WIDTH  
 91'-0" LENGTH  
 0° SKEW  
 STRUCTURE NUMBER 068-3009

**PROPOSED STRUCTURE:**  
 THREE SPAN PPC DECK BEAM BRIDGE SUPPORTED BY INDIVIDUALLY ENCASED PILE BENT PIERS AND PILE BENT STUB ABUTMENTS  
 30'-0" OUT TO OUT DECK  
 113'-0" BK TO BK ABUTMENT  
 0° SKEW  
 STRUCTURE NUMBER 068-3358



**STATE OF ILLINOIS  
 DEPARTMENT OF TRANSPORTATION  
 DIVISION OF HIGHWAYS**

APPROVED 7-29 2009  
 COUNTY ENGINEER

PASSED 8-14 2009  
 DISTRICT 6 ENGINEER OF LOCAL ROADS AND STREETS  
Ron Dechambrun 8/14/09  
 DISTRICT 6 ENGINEER OF CONSTRUCTION

RELEASING FOR BID 8-14 2009  
 BASED ON LIMITED REVIEW Roger D. Driskell  
 DEPUTY DIRECTOR OF HIGHWAYS, REGION 4 ENGINEER



Tony M. McDonough 7-29-09  
 Signature Date

11/30/09  
 Expires

**PRINTED BY THE AUTHORITY  
 OF THE STATE OF ILLINOIS**