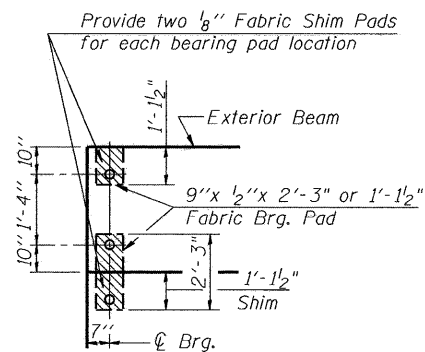
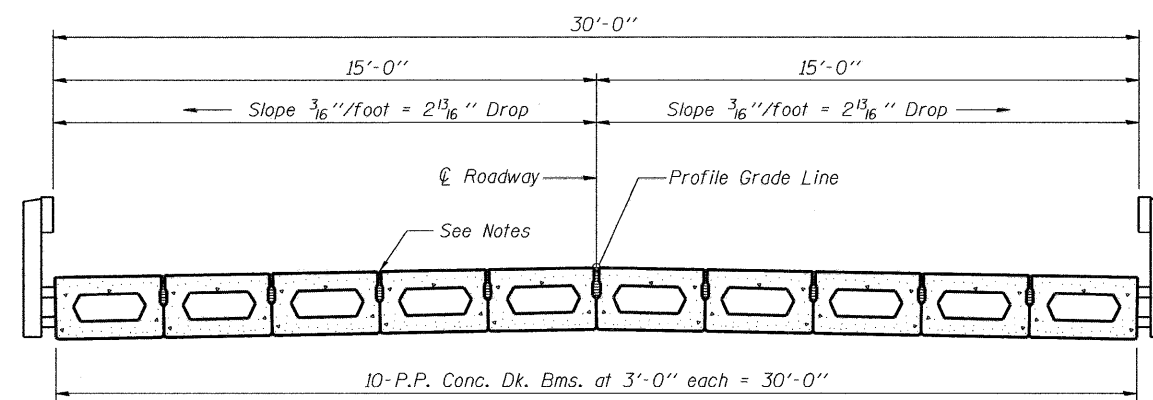


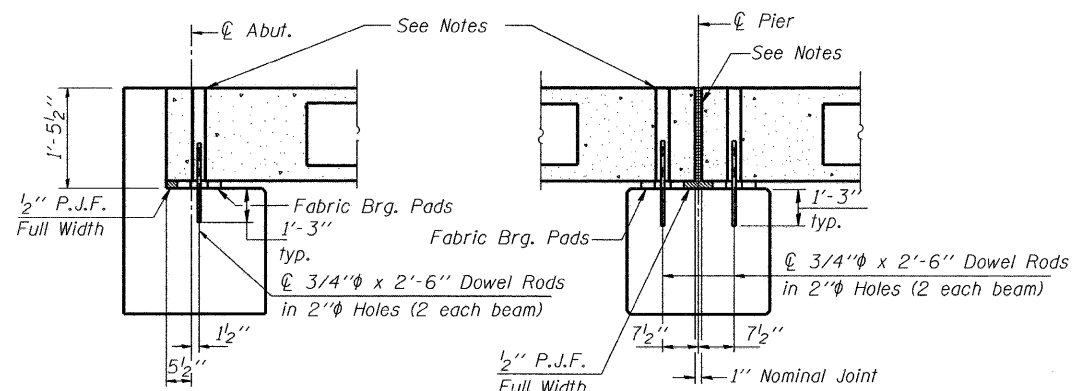
STATE OF ILLINOIS
DEPARTMENT OF TRANSPORTATION



1/2" FABRIC BRG. PAD DETAILS



CROSS SECTION



SECTION AT ABUTS.
(Along ϕ Beams)

SECTION AT PIERS
(Along ϕ Beams)

Notes:
After beams have been erected, holes shall be drilled into substructure and anchor dowels placed. Dowel holes shall be filled with non-shrink grout to top of beam and allowed to cure min. 24 hrs. prior to grouting the shear keys.
Nominal 1" joint at ϕ Pier shall be filled with non-shrink grout.
Longitudinal keys shall be grouted.
See sheet 6 of 12 for P.P.C. Deck Beam Bill of Material and sheet 7 of 12 for Steel Railing, Type S1 Bill of Material.

PPC DECK BEAM SUPERSTRUCTURE
STRUCTURE NO. 068-3358

DESIGNED	CMF
CHECKED	TMM
DRAWN	RNH
CHECKED	TMM

<p>McDonough-Whitlow, P.C. Consulting Engineers & Land Surveyors 138 East Wood Street Hillsboro, IL 62049 Phone: 217.532.9233 Fax: 217.532.6300 PROFESSIONAL DESIGN No. 184-002754</p>	<p>SHEET NO. 3 12 SHEETS</p>	F.A.S. RTE.	SECTION	COUNTY	TOTAL SHEETS	SHEET NO.
		721	08-00128-00 BR	MONTGOMERY	22	9
		CONTRACT NO. 93496				
FED. ROAD DIST. NO. _ ILLINOIS FED. AID PROJECT						