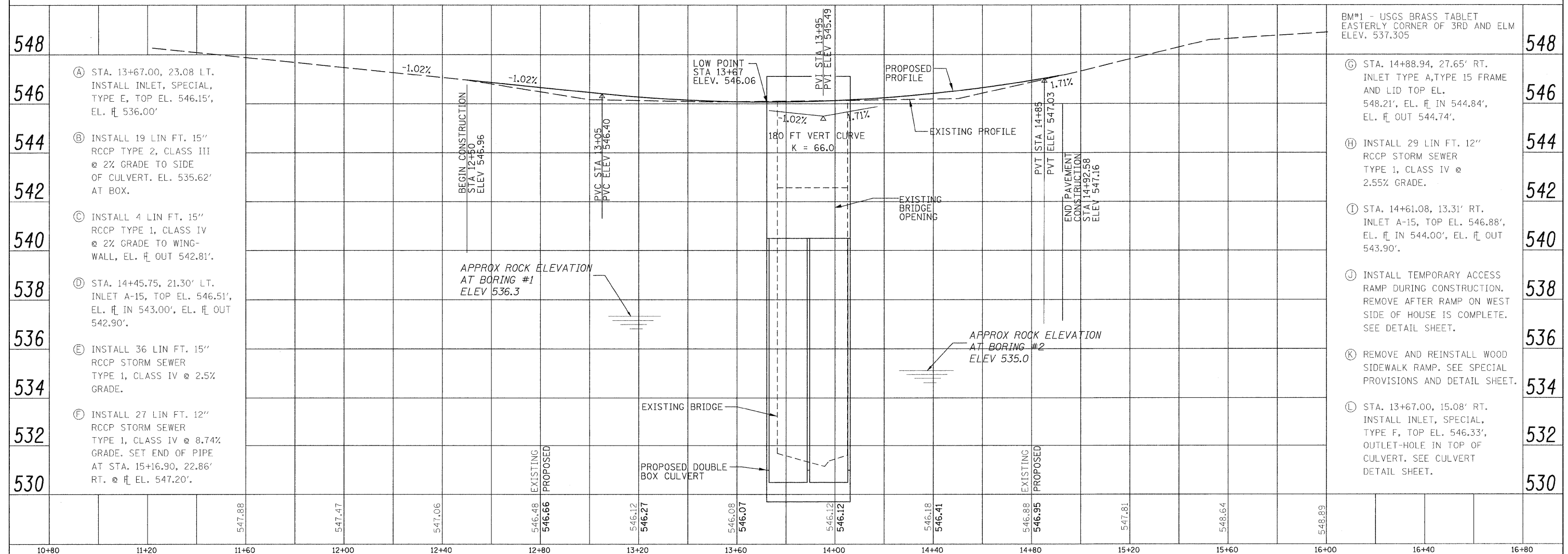
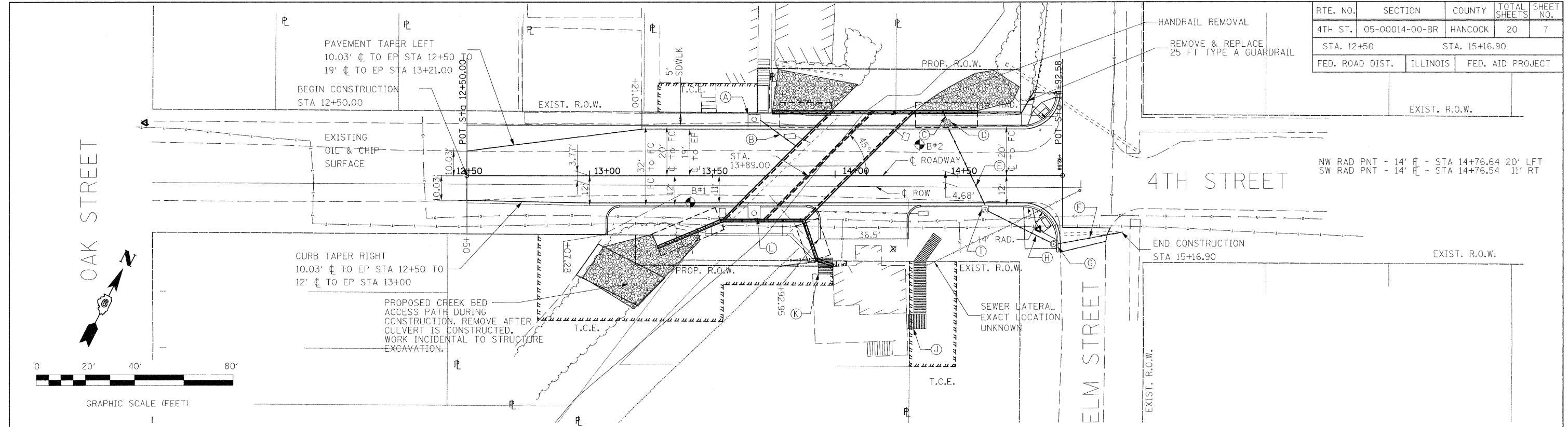


RTE. NO.	SECTION	COUNTY	TOTAL SHEETS	SHEET NO.
4TH ST.	05-00014-00-BR	HANCOCK	20	7
STA. 12+50		STA. 15+16.90		
FED. ROAD DIST.	ILLINOIS	FED. AID PROJECT		



- (A) STA. 13+67.00, 23.08 LT. INSTALL INLET, SPECIAL, TYPE E, TOP EL. 546.15', EL. \mp 536.00'
- (B) INSTALL 19 LIN FT. 15" RCCP TYPE 2, CLASS III @ 2% GRADE TO SIDE OF CULVERT. EL. 535.62' AT BOX.
- (C) INSTALL 4 LIN FT. 15" RCCP TYPE 1, CLASS IV @ 2% GRADE TO WING-WALL, EL. \mp OUT 542.81'.
- (D) STA. 14+45.75, 21.30' LT. INLET A-15, TOP EL. 546.51', EL. \mp IN 543.00', EL. \mp OUT 542.90'.
- (E) INSTALL 36 LIN FT. 15" RCCP STORM SEWER TYPE 1, CLASS IV @ 2.5% GRADE.
- (F) INSTALL 27 LIN FT. 12" RCCP STORM SEWER TYPE 1, CLASS IV @ 8.74% GRADE. SET END OF PIPE AT STA. 15+16.90, 22.86' RT. @ \mp EL. 547.20'.
- (G) STA. 14+88.94, 27.65' RT. INLET TYPE A, TYPE 15 FRAME AND LID TOP EL. 548.21', EL. \mp IN 544.84', EL. \mp OUT 544.74'.
- (H) INSTALL 29 LIN FT. 12" RCCP STORM SEWER TYPE 1, CLASS IV @ 2.55% GRADE.
- (I) STA. 14+61.08, 13.31' RT. INLET A-15, TOP EL. 546.88', EL. \mp IN 544.00', EL. \mp OUT 543.90'.
- (J) INSTALL TEMPORARY ACCESS RAMP DURING CONSTRUCTION. REMOVE AFTER RAMP ON WEST SIDE OF HOUSE IS COMPLETE. SEE DETAIL SHEET.
- (K) REMOVE AND REINSTALL WOOD SIDEWALK RAMP. SEE SPECIAL PROVISIONS AND DETAIL SHEET.
- (L) STA. 13+67.00, 15.08' RT. INSTALL INLET, SPECIAL, TYPE F, TOP EL. 546.33', OUTLET-HOLE IN TOP OF CULVERT. SEE CULVERT DETAIL SHEET.

DESIGNED -	REVISED -
DRAWN -	REVISED -
CHECKED -	REVISED -
DATE -	REVISED -

**STATE OF ILLINOIS
DEPARTMENT OF TRANSPORTATION**

**PLAN AND PROFILE
DALLAS CITY CULVERT**

RTE.	SECTION	COUNTY	TOTAL SHEETS	SHEET NO.
4TH	05-00014-00-BR	HANCOCK	20	7
SN 034-6028		CONTRACT NO. 93497		
FED. ROAD DIST. NO.	ILLINOIS FED. AID PROJECT			