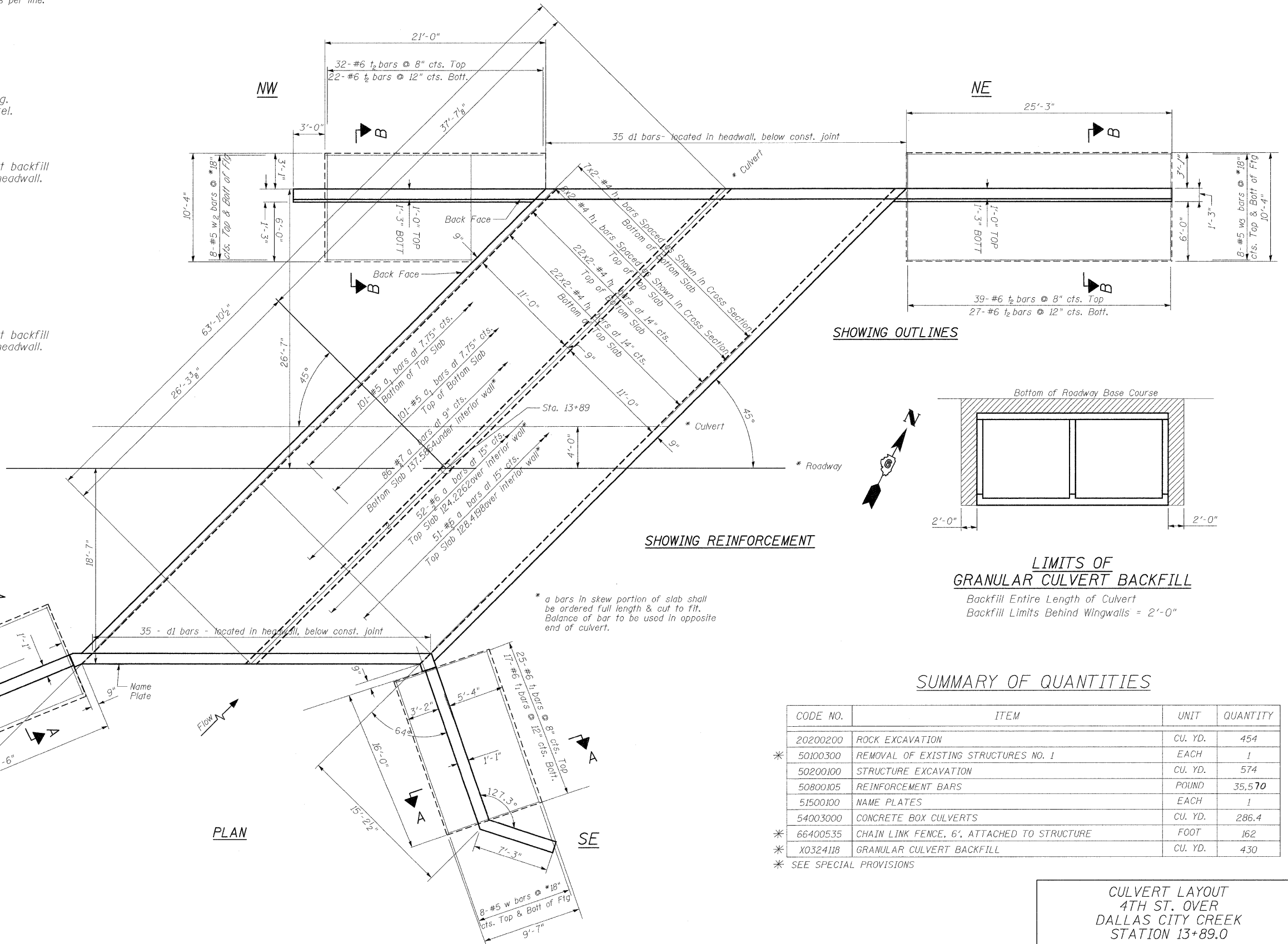
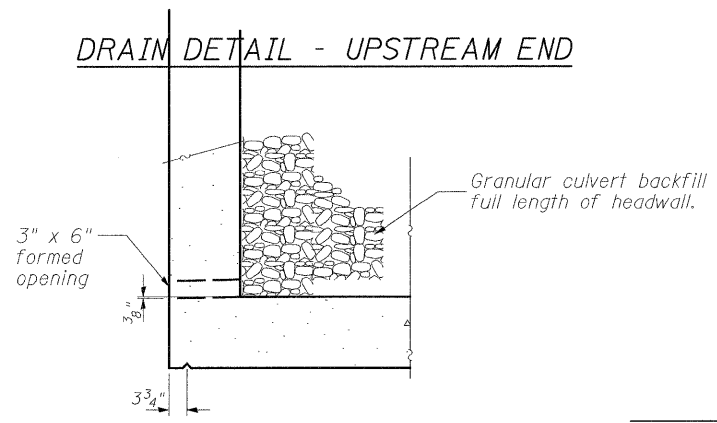
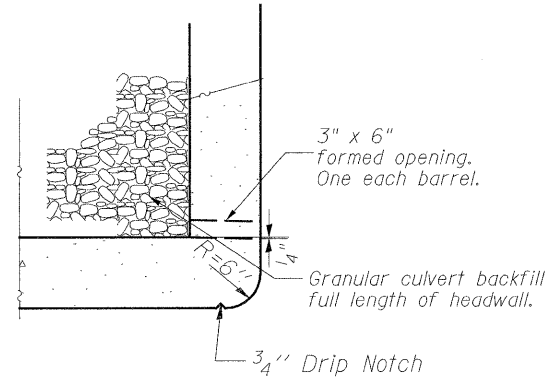


RTE. NO.	SECTION	COUNTY	TOTAL SHEETS	SHEET NO.
4TH ST.	05-00014-00-BR	HANCOCK	20	13
STA. 13+89.0				
FED. ROAD DIST.	ILLINOIS	FED. AID PROJECT		

- NOTES**
- A distance of half the length of the wingwall but not less than six feet of the barrel shall be poured monolithically with the wingwalls.
 - Reinforcement Bars shall conform to the requirements of ASTM A 706, Grade 60.
 - All construction joints shall be bonded.
 - Minimum lap lengths:
 #4 bar: 1'-4"
 #5 bar: 1'-8"
 - Bars indicated thus 12 x 4-#5 indicates 12 lines of bars with 4 lengths per line.



DESIGNED -	JLS	REVISED -	
DRAWN -	JLS	REVISED -	
CHECKED -	CSB	REVISED -	
DATE -	JUN 2008	REVISED -	

STATE OF ILLINOIS
 DEPARTMENT OF TRANSPORTATION

CULVERT LAYOUT
 DALLAS CITY CULVERT

SHEET 2 OF 5

CULVERT LAYOUT 4TH ST. OVER DALLAS CITY CREEK STATION 13+89.0				
RTE.	SECTION	COUNTY	TOTAL SHEETS	SHEET NO.
4th	05-00014-00-BR	HANCOCK	20	13
SN 034-6028			CONTRACT NO. 3497	
FED. ROAD DIST. NO.	ILLINOIS	FED. AID PROJECT		