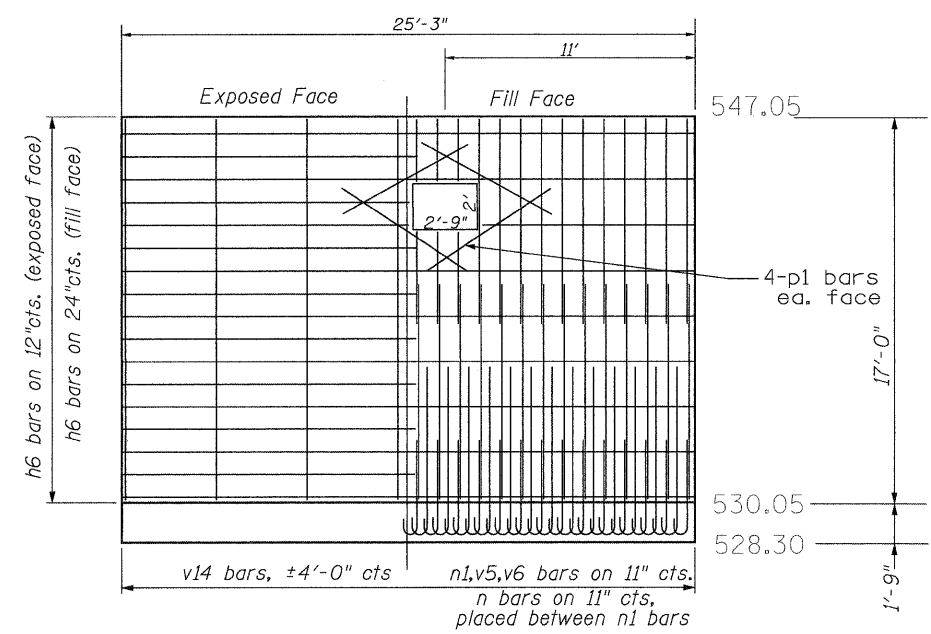
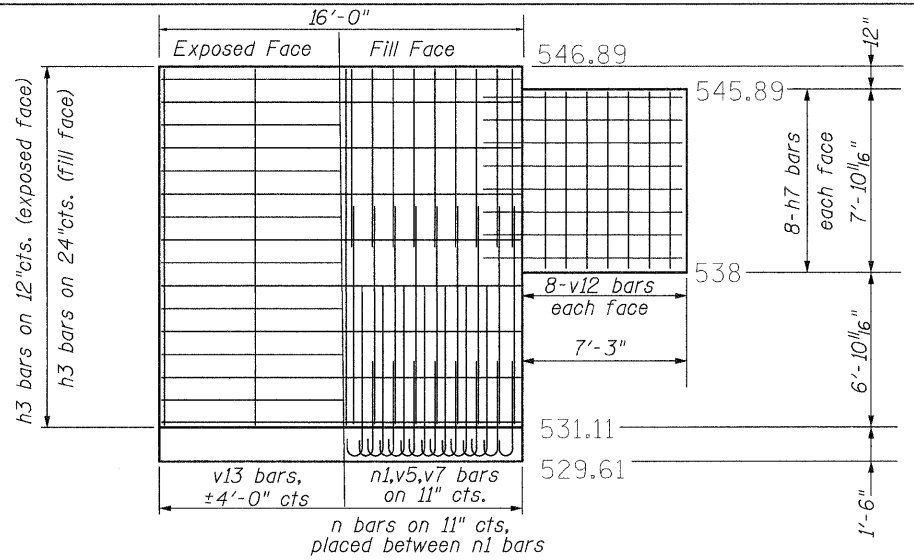


RTE. NO.	SECTION	COUNTY	TOTAL SHEETS	SHEET NO.
4TH ST.	05-00014-00-BR	HANCOCK	20	15
STA. 13+89.0				
FED. ROAD DIST.	ILLINOIS	FED. AID PROJECT		



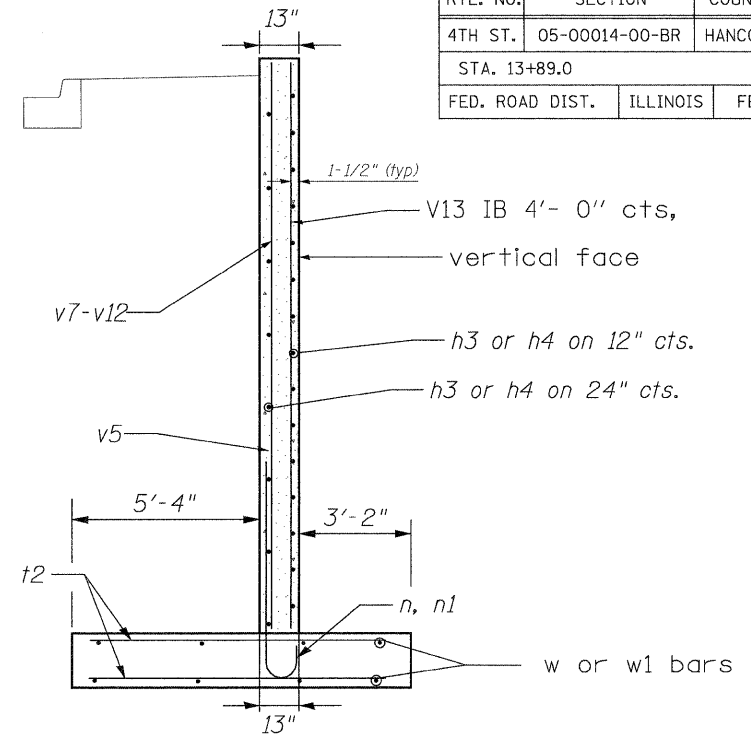
HALF ELEVATION
LOOKING SOUTH
NE WINGWALL

n	: 28 (#8) (8'-6'')	t ₁	: 66 (#6) (10'-1'')
n ₁	: 29 (#7) (5'-2'')	p ₁	: 8 (#6) (6'-6'')
v ₅	: 29 (#6) (9'-6'')	w ₃	: 16 (#5) (24'-11'')
v ₆	: 29 (#4) (9'-0'')	h ₆	: 28 (#4) (24'-11'')
v ₁₄	: 8 (#4) (16'-8'')		

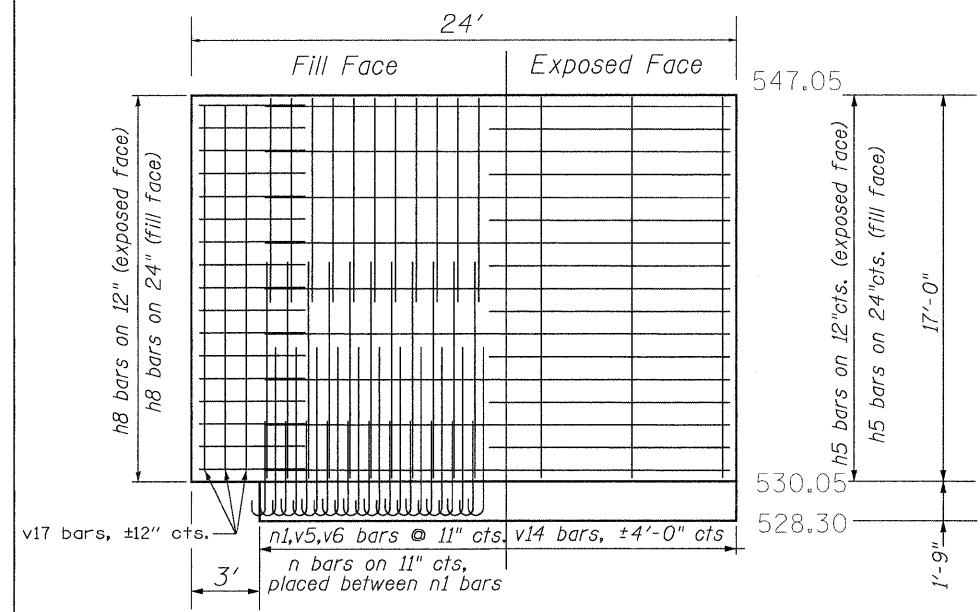


HALF ELEVATION
SE WINGWALL

n	: 18 (#8) (8'-6'')	v ₁₃	: 5 (#4) (15'-4'')
n ₁	: 19 (#7) (5'-2'')	t ₂	: 42 (#6) (9'-4'')
v ₅	: 19 (#6) (9'-6'')	w	: 16 (#4) (15'-8'')
v ₇	: 19 (#4) (7'-9'')	h ₃	: 26 (#4) (15'-8'')
v ₁₂	: 16 (#4) (8'-0'')	h ₇	: 16 (#5) (9'-0'')

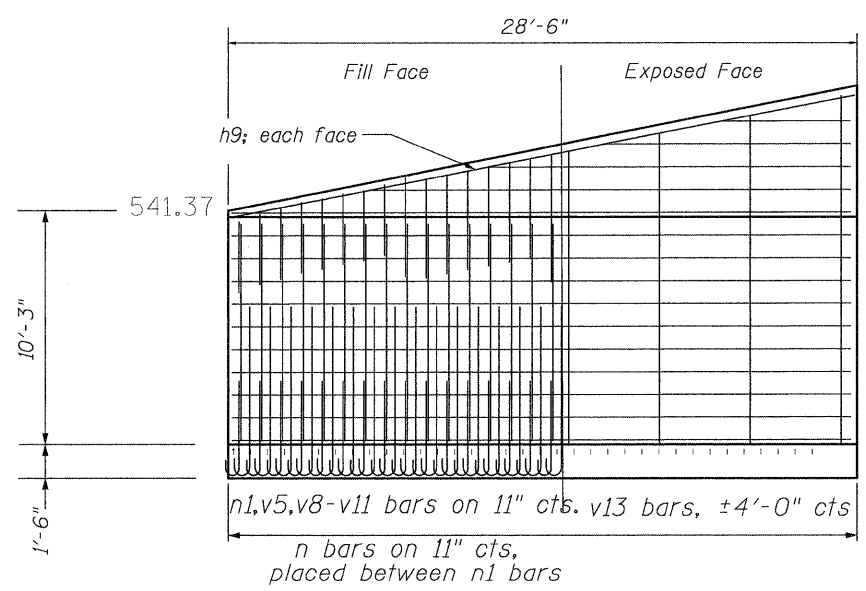


SECTION - SOUTH WINGS



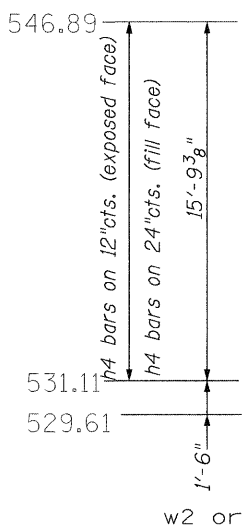
HALF ELEVATION
NW WINGWALL

n	: 23 (#8) (8'-6'')	v ₁₄	: 7 (#4) (16'-8'')
n ₁	: 24 (#7) (5'-2'')	t ₁	: 54 (#6) (10'-1'')
v ₅	: 24 (#6) (9'-6'')	w ₂	: 16 (#5) (20'-9'')
v ₆	: 24 (#4) (9'-0'')	h ₅	: 27 (#4) (20'-9'')
v ₁₇	: 6 (#6) (16'-6'')	h ₈	: 27 (#5) (5'-0'')



HALF ELEVATION
SW WINGWALL

n	: 31 (#8) (8'-6'')	v ₁₁	: 8 (#4) (7'-0'')
n ₁	: 32 (#7) (5'-2'')	v ₁₃	: 9 (#4) (15'-4'')
v ₅	: 32 (#6) (9'-6'')	t ₂	: 65 (#6) (9'-4'')
v ₈	: 8 (#4) (3'-1'')	w ₁	: 16 (#5) (27'-5'')
v ₉	: 8 (#4) (4'-4'')	h ₄	: 21 (#4) (27'-5'')
v ₁₀	: 8 (#4) (5'-7'')	h ₉	: 2 (#4) (28'-0'')



SECTION - NORTH WINGS

*h4 bars in sloped portion of wing shall be ordered full length and cut to fit. Balance of bar to be used on opposite face of wing.

WINGWALL DETAILS
4TH ST. OVER
DALLAS CITY CREEK
STATION 13+89.0

DESIGNED	- JLS	REVISED	-
DRAWN	- JLS	REVISED	-
CHECKED	- CSB	REVISED	-
DATE	- JUN 2008	REVISED	-

STATE OF ILLINOIS
DEPARTMENT OF TRANSPORTATION

WINGWALL DETAILS
DALLAS CITY CULVERT

RTE.	SECTION	COUNTY	TOTAL SHEETS	SHEET NO.
4TH	05-00014-00-BR	HANCOCK	20	15
SN 034-6028 CONTRACT NO 93497				
FED. ROAD DIST. NO.	ILLINOIS	FED. AID PROJECT		