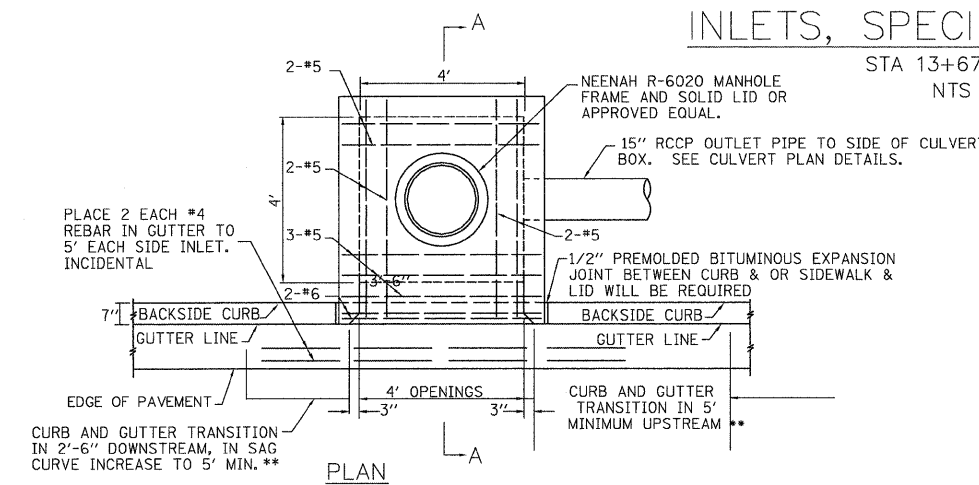
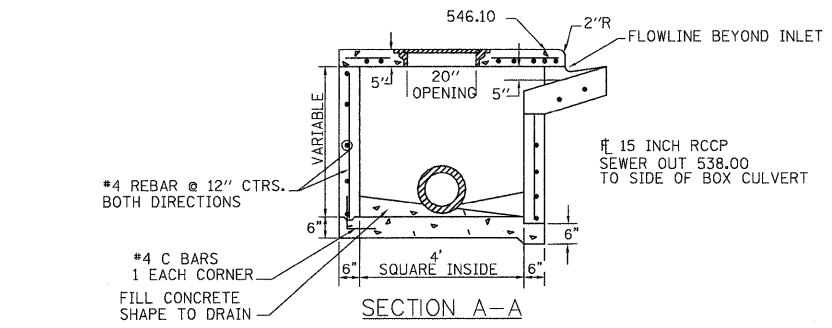


INLETS, SPECIAL, TYPE E

STA 13+67.0 LT
NTS



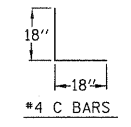
PLAN



SECTION A-A

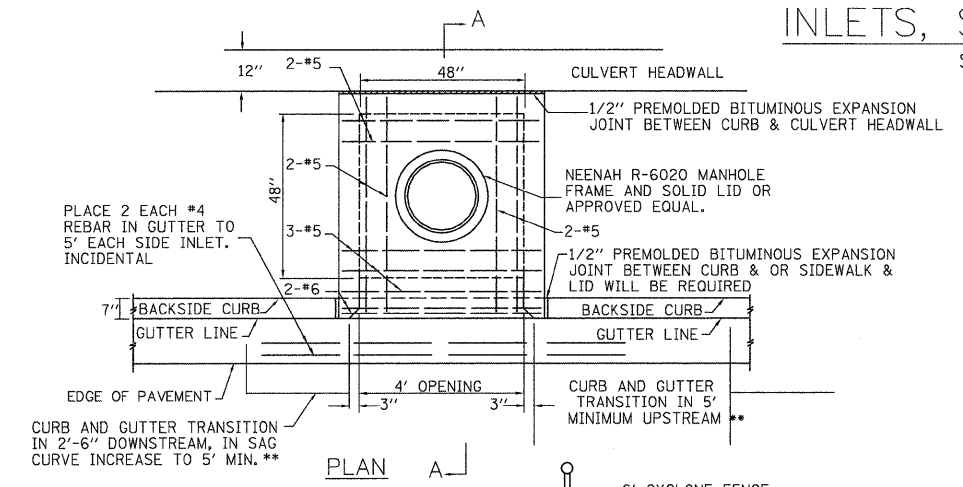
NOTES

1. THE CONTRACT UNIT PRICE FOR INLETS, SPECIAL, TYPE E SHALL INCLUDE THE COST OF THE FRAME AND LID AS SHOWN, THE REINFORCED CONCRETE COVER, EXCAVATION AND FURNISHING AND COMPACTING THE SPECIFIED BACKFILL MATERIAL. ADDITIONALLY IT WILL BE NECESSARY TO MEET ALL OTHER REQUIREMENTS OF SECTION 602 OF THE STANDARD SPECIFICATIONS.
2. FRONT EDGE OF TOP SLAB SHALL CONFORM WITH THE RADIUS OF ADJACENT CURB WHERE INLET IS LOCATED WITHIN CURB RETURNS AT INTERSECTIONS.
3. #4 REBARS SHALL BE PLACED HORIZONTALLY & VERTICALLY AT 12" CENTERS IN WALLS ALL AROUND, WITH 18" X 18" C BARS AT CORNERS.
4. IN LIEU OF C BARS, CONTRACTOR MAY DRILL HOLES 6" DEEP IN BOTTOM SLAB TO HOLD VERTICAL #4 REBARS IN THE WALLS.
5. COST OF REINFORCING BARS INCIDENTAL.
6. WHEN INLET TOP IS NOT CAST IN PLACE, TOP SHALL BE PLACED IN A FULL BED OF MORTAR.
7. CLASS SI CONCRETE SHALL BE USED THROUGHOUT.

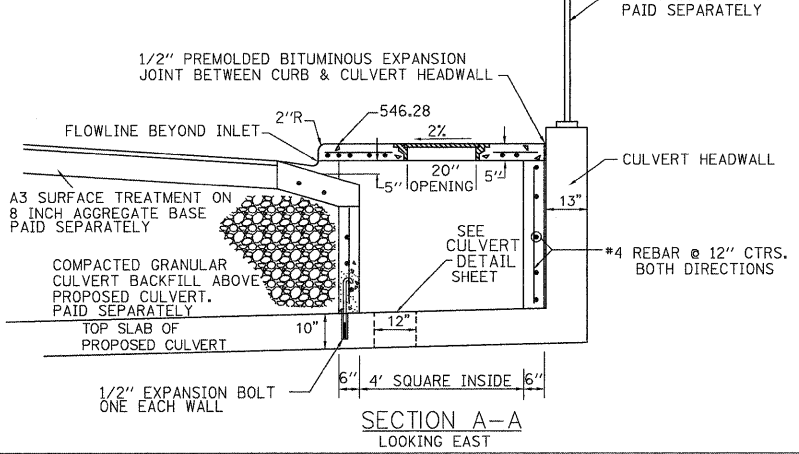


INLETS, SPECIAL, TYPE F

STA 13+67.0 RT
NTS



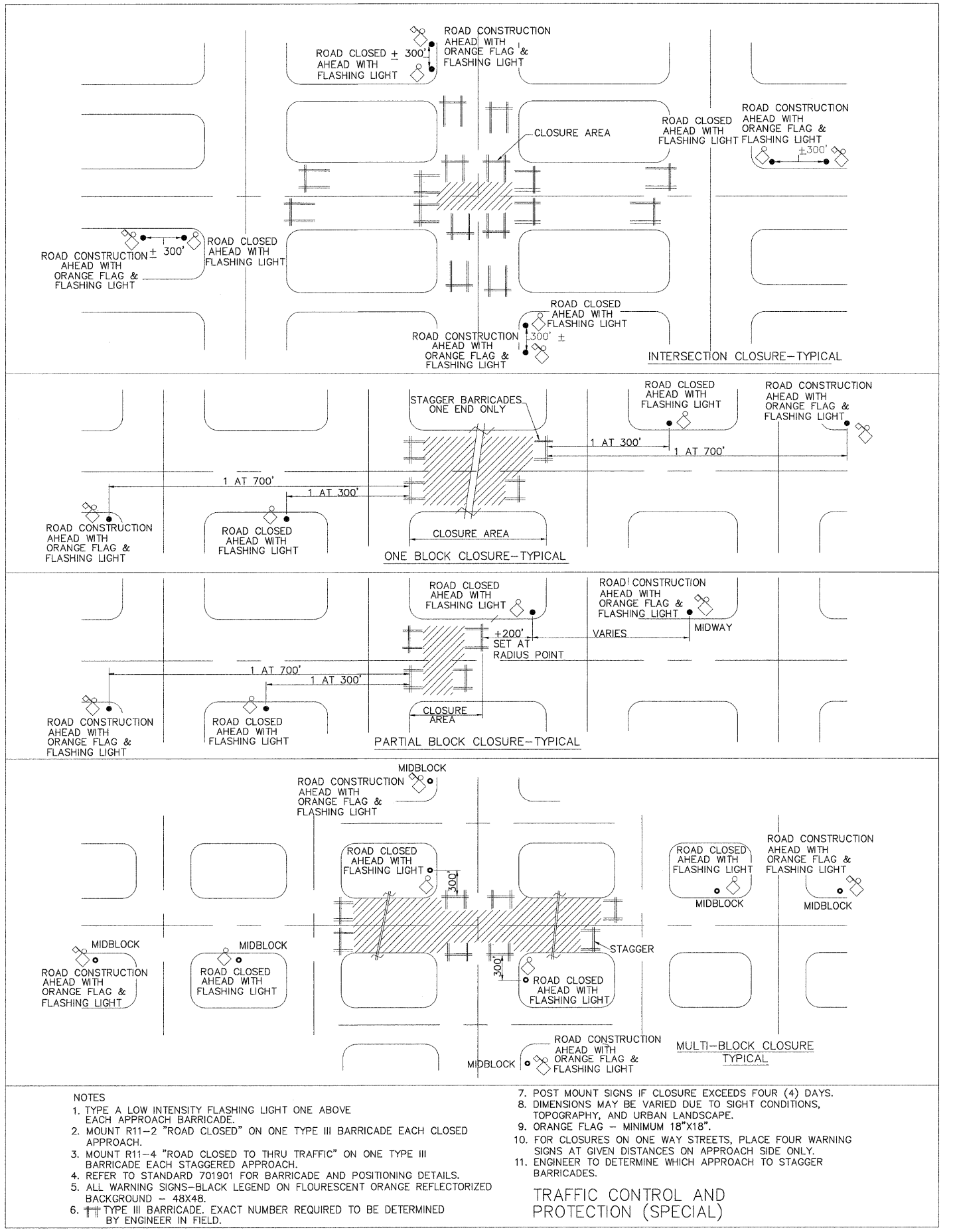
PLAN



SECTION A-A
LOOKING EAST

NOTES

1. THE CONTRACT UNIT PRICE FOR INLETS, SPECIAL, TYPE F SHALL INCLUDE THE COST OF THE FRAME AND LID AS SHOWN, THE REINFORCED CONCRETE COVER, EXCAVATION AND FURNISHING AND COMPACTING THE SPECIFIED BACKFILL MATERIAL. ADDITIONALLY IT WILL BE NECESSARY TO MEET ALL OTHER REQUIREMENTS OF SECTION 602 OF THE STANDARD SPECIFICATIONS.
2. FRONT EDGE OF TOP SLAB SHALL CONFORM WITH THE RADIUS OF ADJACENT CURB WHERE INLET IS LOCATED WITHIN CURB RETURNS AT INTERSECTIONS.
3. COST OF REINFORCING BARS INCIDENTAL.
4. WHEN INLET TOP IS NOT CAST IN PLACE, TOP SHALL BE PLACED IN A FULL BED OF MORTAR.
5. CLASS SI CONCRETE SHALL BE USED THROUGHOUT.



NOTES

1. TYPE A LOW INTENSITY FLASHING LIGHT ONE ABOVE EACH APPROACH BARRICADE.
2. MOUNT R11-2 "ROAD CLOSED" ON ONE TYPE III BARRICADE EACH CLOSED APPROACH.
3. MOUNT R11-4 "ROAD CLOSED TO THRU TRAFFIC" ON ONE TYPE III BARRICADE EACH STAGGERED APPROACH.
4. REFER TO STANDARD 701901 FOR BARRICADE AND POSITIONING DETAILS.
5. ALL WARNING SIGNS - BLACK LEGEND ON FLOURESCENT ORANGE REFLECTORIZED BACKGROUND - 48X48.
6. TYPE III BARRICADE. EXACT NUMBER REQUIRED TO BE DETERMINED BY ENGINEER IN FIELD.

7. POST MOUNT SIGNS IF CLOSURE EXCEEDS FOUR (4) DAYS.
8. DIMENSIONS MAY BE VARIED DUE TO SIGHT CONDITIONS, TOPOGRAPHY, AND URBAN LANDSCAPE.
9. ORANGE FLAG - MINIMUM 18"X18".
10. FOR CLOSURES ON ONE WAY STREETS, PLACE FOUR WARNING SIGNS AT GIVEN DISTANCES ON APPROACH SIDE ONLY.
11. ENGINEER TO DETERMINE WHICH APPROACH TO STAGGER BARRICADES.

TRAFFIC CONTROL AND PROTECTION (SPECIAL)

| | |
|------------|-----------|
| DESIGNED - | REVISED - |
| DRAWN - | REVISED - |
| CHECKED - | REVISED - |
| DATE - | REVISED - |

**STATE OF ILLINOIS
DEPARTMENT OF TRANSPORTATION**

**DETAIL SHEET 1
DALLAS CITY CULVERT**

| | | | | |
|---------------------------|----------------|---------|--------------|-----------|
| RTE. | SECTION | COUNTY | TOTAL SHEETS | SHEET NO. |
| 4TH | 05-00014-00-BR | HANCOCK | 20 | 17 |
| CONTRACT NO. 93497 | | | | |
| ILLINOIS FED. AID PROJECT | | | | |