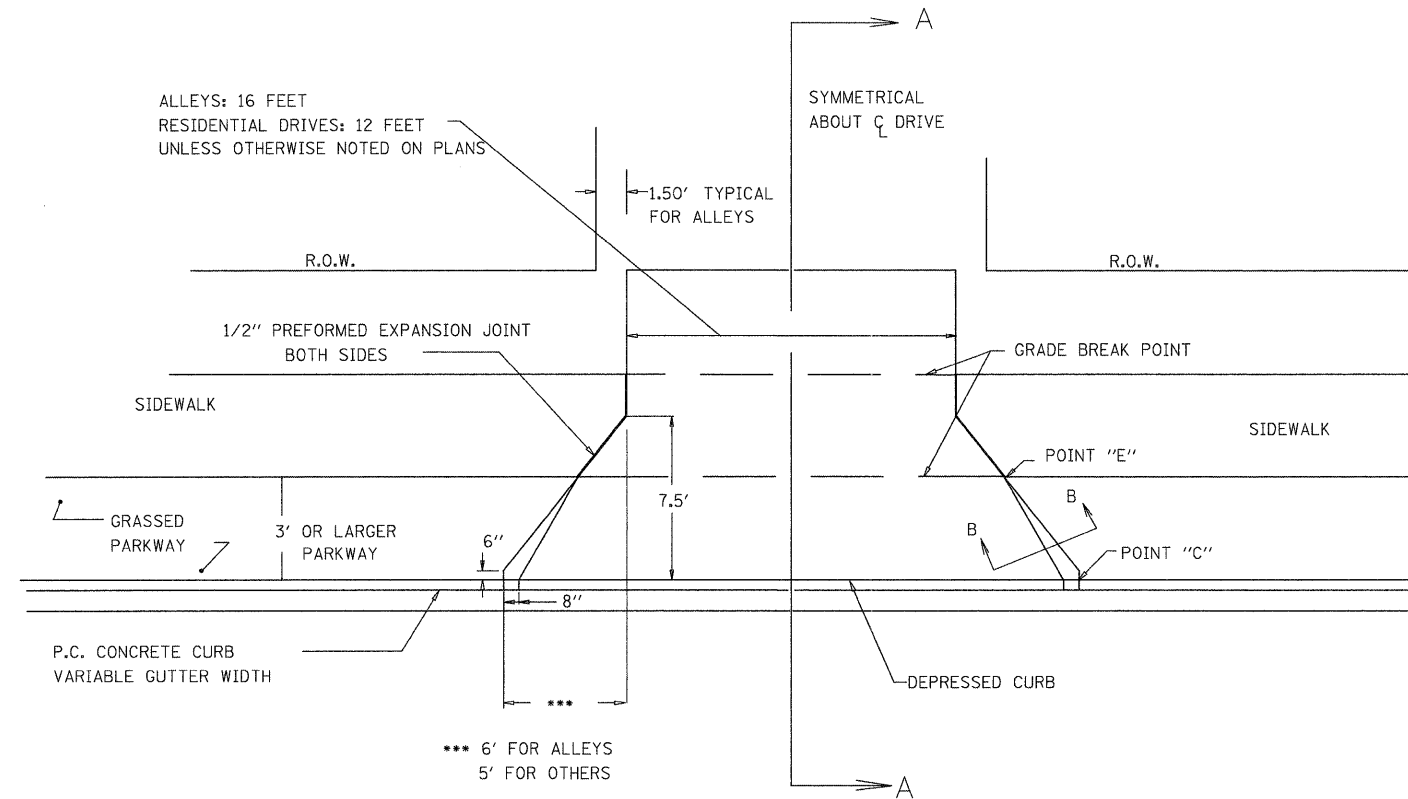
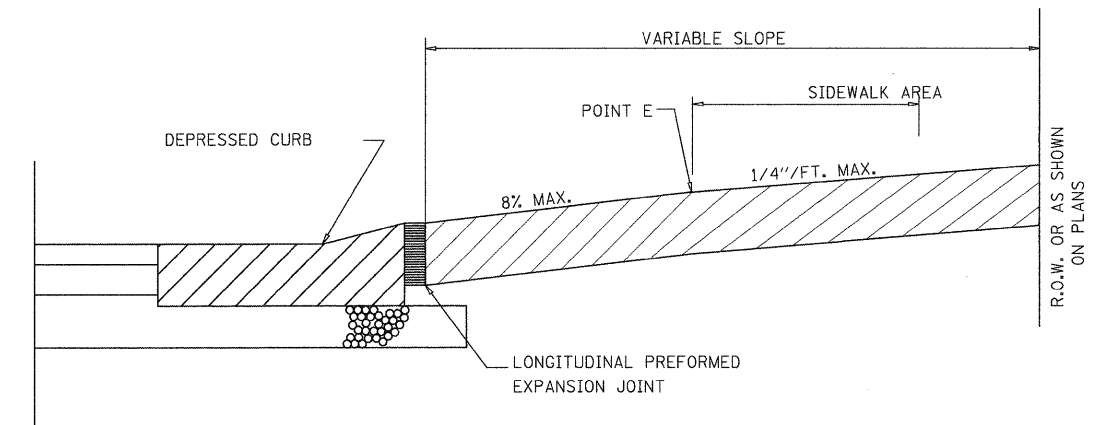


# ALLEY AND DRIVEWAY STANDARD

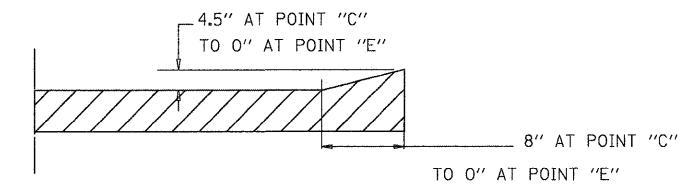
NOT TO SCALE



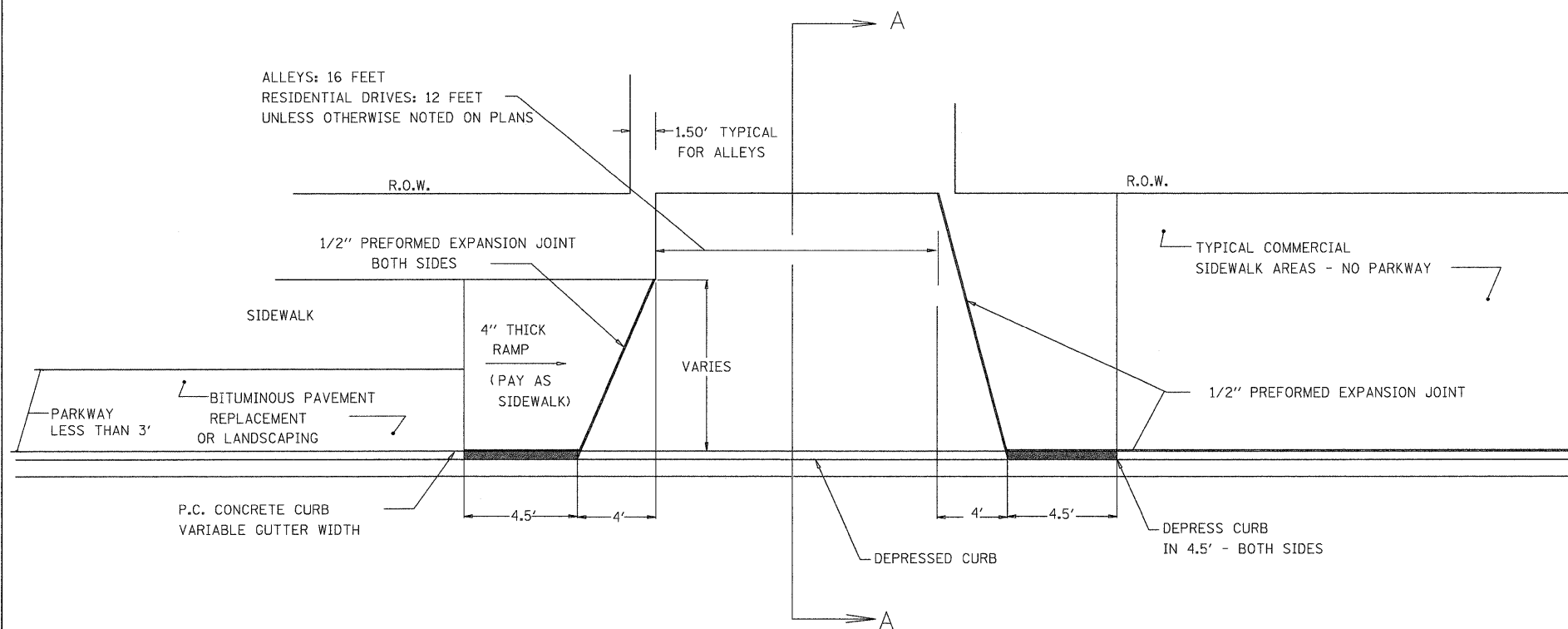
TYPICAL ENTRANCE - 3' PARKWAY OR GREATER



SECTION A-A



SECTION B-B



TYPICAL ENTRANCE - LESS THAN 3' PARKWAY

NOTES

1. CLASS PV CONCRETE SHALL BE USED THROUGH-OUT.
2. THE INSTALLATION OF 1/2" PREFORMED EXPANSION JOINTS WHERE REQUIRED SHALL BE INCLUDED IN THE UNIT PRICE BID FOR P.C.C. DRIVEWAY PAVEMENT.
3. THE UNIT PRICE BID FOR THIS ITEM SHALL INCLUDE THE FURNISHING OF ALL LABOR AND MATERIALS NECESSARY TO CONSTRUCT THE P.C.C. DRIVEWAY PAVEMENT.
4. DRIVEWAY MAY REQUIRE A SLOPE CHANGE AT DETERMINED DISTANCES BEHIND CURB FOR SIDEWALK OR DRAINAGE CORRECTIONS DUE TO EXCESSIVE OR INADEQUATE SLOPE OF STRAIGHT LINE GRADE.
5. COST OF CONSTRUCTING A SLOPE CHANGE IF NECESSARY AND ALL JOINTING SHALL BE INCIDENTAL TO THE COST PER SQUARE YARD OF P.C.C. DRIVEWAY PAVEMENT.
6. REFER TO CROSS SECTIONS FOR DRIVE AND SIDEWALK CROSS SLOPES.
7. REFER TO PLAN AND PROFILE SHEETS FOR DRIVEWAY WIDTHS OR MATCH EXISTING.
8. SAW OR SCRATCH JOINTS IN EACH ENTRANCE SO THAT NO SECTION REMAINS LARGER THAN 12 FEET IN ANY DIMENSION.

DESIGNED -	REVISED -
DRAWN -	REVISED -
CHECKED -	REVISED -
DATE -	REVISED -

STATE OF ILLINOIS  
DEPARTMENT OF TRANSPORTATION

DETAIL SHEET 3  
DALLAS CITY CULVERT

RTE.	SECTION	COUNTY	TOTAL SHEETS	SHEET NO.
4TH	05-00014-00-BR	HANCOCK	20	19
			CONTRACT NO. 93497	
ILLINOIS FED. AID PROJECT				