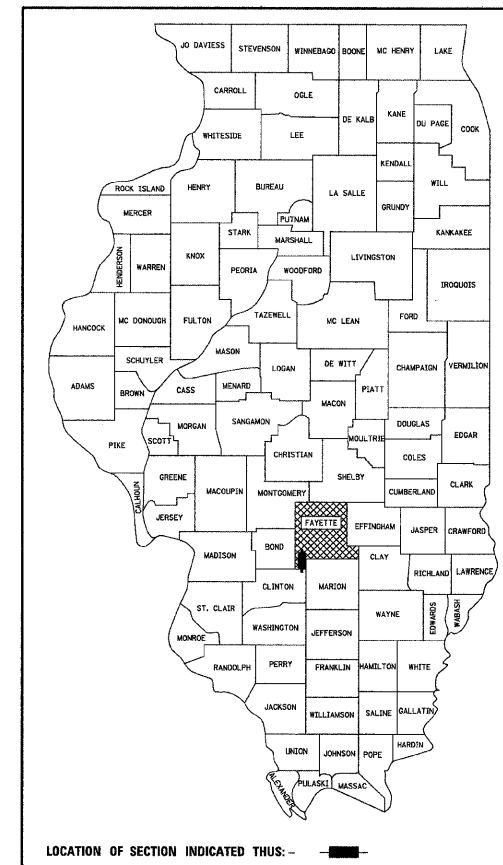


STATE OF ILLINOIS
DEPARTMENT OF TRANSPORTATION

PLANS FOR PROPOSED
HIGHWAY BRIDGE PROGRAM

ROUTE	SECTION	COUNTY	TOTAL SHEETS	SHEET NO.
TR 140	07-11120-00-BR	FAYETTE	10	1
ILLINOIS				



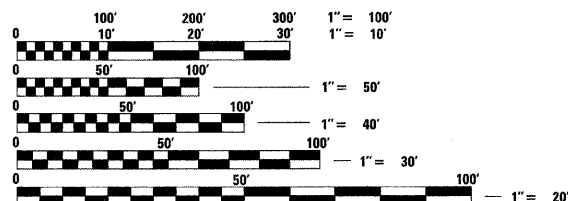
- INDEX OF SHEETS**
- COVER SHEET
 - SUMMARY OF QUANTITIES AND TYPICAL SECTIONS
 - PLAN AND PROFILE OF ROADWAY
 - GENERAL PLAN AND ELEVATION
 - 5.-6. PRECAST PRESTRESSED CONCRETE DECK BEAM DETAILS
 - STEEL RAILING, TYPE S1 DETAILS
 8. ABUTMENT DETAILS
 - 9.-10. CROSS SECTIONS OF ROADWAY

TR 140
BEAR CREEK
SECTION 07-11120-00-BR
PROJECT NO. BROS-051(086)
POPE ROAD DISTRICT
FAYETTE COUNTY
JOB NO. C-97-069-09

HIGHWAY STANDARDS (SEE SPECIFICATIONS)
000001-05 STANDARD SYMBOLS, ABBREVIATIONS AND PATTERNS
280001-04 TEMPORARY EROSION CONTROL SYSTEMS
515001-03 NAME PLATE FOR BRIDGES
701901-01 TRAFFIC CONTROL DEVICES
BLR 21-8 TYPICAL APPLICATION OF TRAFFIC CONTROL DEVICES FOR CONSTRUCTION ON RURAL LOCAL HIGHWAYS

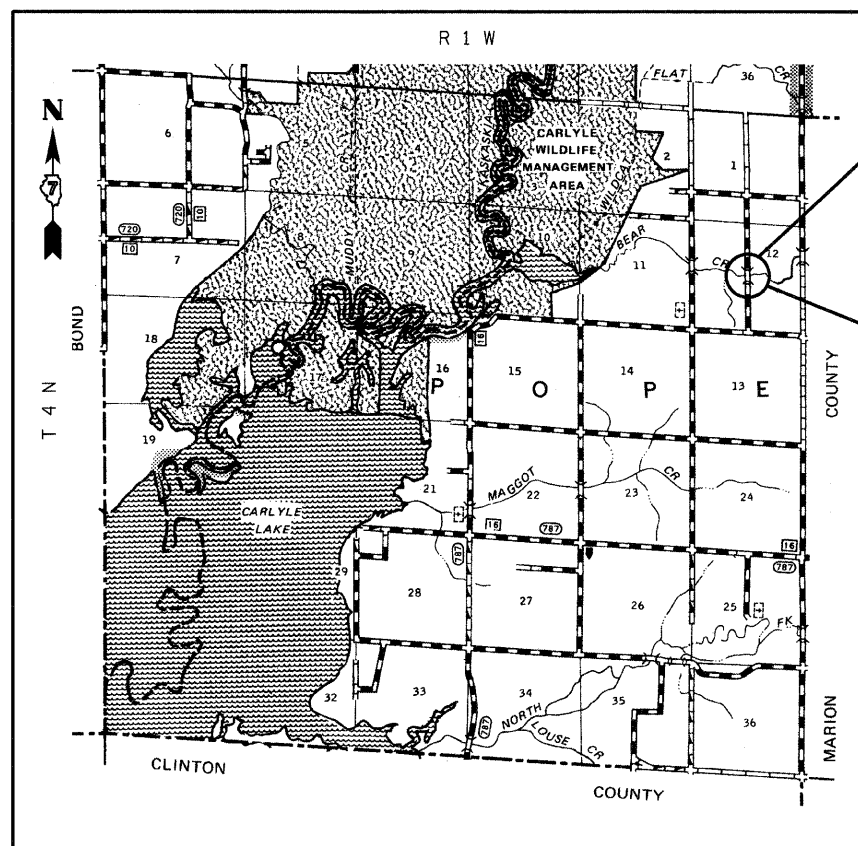
SOIL BORINGS (SEE SPECIFICATIONS)

DESIGN CLASSIFICATION: RURAL LOCAL ROAD
ADT₂₀₀₈ : 75
ADT₂₀₂₈ : 100
DESIGN SPEED - 30 MPH



FULL SIZE PLANS HAVE BEEN PREPARED USING STANDARD ENGINEERING SCALES, REDUCED SIZED PLANS WILL NOT CONFORM TO STANDARD SCALES, IN MAKING MEASUREMENTS ON REDUCED PLANS, THE ABOVE SCALES MAY BE USED.

J.U.L.I.E.
JOINT UTILITY LOCATING INFORMATION FOR EXCAVATORS
1-800-892-0123 Website: <http://www.illinois1call.com>



SECTION BEGINS STA. 8+50.00
SECTION 07-11120-00-BR
INCLUDES THE CONSTRUCTION OF A SINGLE SPAN PRECAST PRESTRESSED CONCRETE DECK BEAM BRIDGE CARRYING TR 140 OVER BEAR CREEK, 64'-4" BK. TO BK. ABUTMENTS X 24' WIDE. NO SKEW.
EXISTING STRUCTURE NO. 026-3271
PROPOSED STRUCTURE NO. 026-3444
SECTION ENDS STA. 12+70.53

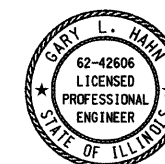
LOCATION: NEAR THE SE CORNER, NW 1/4, SECTION 12, T4N, R1W, 3RD P.M.
NET LENGTH OF PROJECT: 420.53 FT = 0.080 MI

FAYETTE COUNTY
HIGHWAY DEPARTMENT

APPROVED 8-12, 2009
[Signature]
FAYETTE COUNTY, COUNTY ENGINEER

PASSED 8-20, 2009
[Signature]
DISTRICT SEVEN ENGINEER OF LOCAL ROADS & STREETS

RELEASING FOR BID
BASED ON LIMITED
REVIEW 8-20, 2009
[Signature]
DEPUTY DIRECTOR OF HIGHWAYS, REGION FOUR ENGINEER



[Signature] 08/12/09
GARY L. HAHN
CENTRALIA, ILLINOIS
ILLINOIS LICENSED PROFESSIONAL
ENGINEER NO. 62-42606
EXPIRES NOV. 30, 2009