

* SECTION	COUNTY	TOTAL SHEETS	SHEET NO.
** 08-00048-00-BT	SHELBY	27	1

* PHASE 4
 ** GENERAL DACEY TRAIL

STATE OF ILLINOIS DEPARTMENT OF TRANSPORTATION PLANS FOR PROPOSED FHWA - TCSP

INDEX OF SHEETS

SEE SHEET 2 OF 27 SHEETS

LIST OF STANDARDS

SEE SHEET 2 OF 27 SHEETS

CITY OF SHELBYVILLE SHELBY COUNTY

SECTION 08-00048-00-BT

GENERAL DACEY TRAIL PHASE 4

PROJECT NO. TCSP-IL08 (021)

JOB NO. C 97-089-09



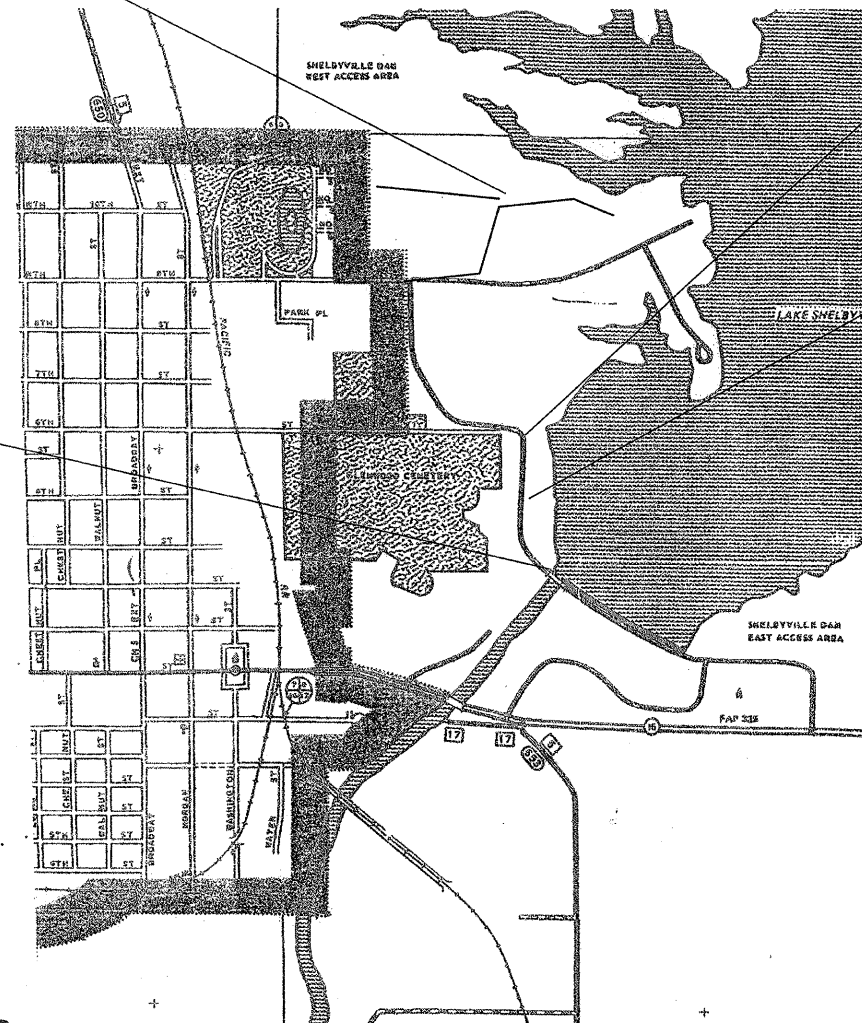
START PROJECT

STA 400 + 00



END PROECT

STA 442 + 75



START OMISSION

STA 433 + 00

END OMISSION

STA 435 + 50

PROJECT LENGTH

4025 FT. = 0.762 MILES

**PLANS PREPARED BY:
 SHELBY ENGINEERING
 1010 E. NORTHLAND DR.
 SHELBYVILLE ILLINOIS 62565**

**J.U.L.I.E.
 JOINT UTILITY LOCATION INFORMATION FOR EXCAVATION
 1-800-892-0123**

CONTRACT NUMBER 95582

PLANS PREPARED BY:

S. Alan Spesard 8-07-09
S. ALAN SPESARD DATE
LICENSED PROFESSIONAL ENGINEER OF IL
NUMBER 062-052965
EXPIRATION DATE 11-30-2009



CITY OF SHELBYVILLE

APPROVED August 7th 20 09

Ray Duff
 MAYOR, CITY OF SHELBYVILLE IL

PASSED 8/27 20 09

Marcus East
 DISTRICT SEVEN ENGINEER OF
 LOCAL ROAD AND STREETS

APPROVED 8/27 20 09

Roger Dushell
 DEPUTY DIRECTOR OF HIGHWAYS
 REGION FOUR ENGINEER

RELEASING FOR
 BID BASED ON
 LIMITED REVIEW

STATE OF ILLINOIS
 DEPARTMENT OF TRANSPORTATION

SUMMARY OF QUANTITIES

PAY ITEM CODE	DESCRIPTION	QUANTITY	UNIT
20100500	TREE REMOVAL, ACRES	0.40	ACRE
20200100	EARTH EXCAVATION	996	CU YD
20400800	FURNISHED EXCAVATION	2084	CU YD
* 25000200	SEEDING, CLASS 2	1.0	ACRE
* 25000310	SEEDING, CLASS 4	0.3	ACRE
* 25000400	NITROGEN FERTILIZER NUTRIENT	90	POUND
* 25000500	PHOSPHORUS FERTILIZER NUTRIENT	90	POUND
* 25000600	POTASSIUM FERTILIZER NUTRIENT	90	POUND
* 25100115	MULCH, METHOD 2	1.0	ACRE
* 25100120	MULCH, METHOD 2	1.0	TON
* 28000250	TEMPORARY EROSION CONTROL SEEDING	500	POUND
28000300	TEMPORARY DITCH CHECKS	10	EACH
28000400	PERIMETER EROSION BARRIER	300	FOOT
28000500	INLET AND PIPE PROTECTION	7	EACH
35100100	AGGREGATE BASE COURSE, TYPE A	1360	TON
35101400	AGGREGATE BASE COURSE, TYPE B	731	TON
40300100	BITUMINOUS MATERIALS (PRIME COAT)	2278	GALLON
40300300	BITUMINOUS MATERIALS (COVER AND SEAL COATS)	4434	GALLON
40300600	SEAL COAT AGGREGATE	178	TON
42400200	PORTLAND CEMENT CONCRETE SIDEWALK 5 INCH	272	SQ FT
42400800	DETECTABLE WARNINGS	40	SQ FT
44000600	SIDEWALK REMOVAL	1988	SQ FT
542D0213	PIPE CULVERTS, CLASS D, TYPE 1 8"	64	FOOT
542D0215	PIPE CULVERTS, CLASS D, TYPE 1 10"	80	FOOT
542D0220	PIPE CULVERTS, CLASS D, TYPE 1 15"	32	FOOT
542D1069	PIPE CULVERTS, CLASS D, TYPE 2 24"	38	FOOT
542D1087	PIPE CULVERTS, CLASS D, TYPE 2 42"	36	FOOT
54215577	METAL END SECTIONS 42"	2	EACH
66400105	CHAIN LINK FENCE, 4'	195	FOOT
66400805	CHAIN LINK GATES, 4'X5' SINGLE	1	EACH
67100100	MOBILIZATION	1.0	L SUM
72000100	SIGN PANEL- TYPE 1	36	SQ FT
* 78001110	PAINT PAVEMENT MARKING - LINE 4"	500	FOOT
* 78001130	PAINT PAVEMENT MARKING - LINE 6"	52	FOOT
* 78001180	PAINT PAVEMENT MARKING - LINE 24"	13	FOOT
* 78001300	PAINT PAVEMENT MARKINGS- LETTERS AND SYMBOLS, APPLIED	9.2	SQ FT
* A2001016	TREE, ACER RUBRUM (RED MAPLE), 2" CALIPER, BALLED AND BURLAPPED	7	EACH
X0350800	BOLLARDS	2	EACH
XX001011	BICYCLE RACKS	2	EACH
* XX008010	FITNESS EQUIPMENT COMPLETE	1	L.SUM
XX0301430	PRECAST CONCRETE PARKING BLOCK	17	EACH
XX006785	TIMBER BICYCLE RAILING	460	FOOT
XX008011	TIMBER RUB RAIL	400	FOOT
XX008012	WOODEN SIGN POST 4"X4"X10"	11	EACH
XX008013	WOODEN SIGN POST 4"X4"X12"	2	EACH

UTILITIES

POWER & GAS: Ameren CIPS
 711 SOUTH 9TH STREET
 MATTOON ILLINOIS 61938

TELEPHONE: CONSOILDATED TELEPHONE COMPANY
 121 SOUTH 17TH STREET
 MATTOON ILLINOIS 61938

WATER & SEWER: CITY OF SHELBYVILLE ILLINOIS
 131 SOUTH MORGAN STREET
 SHELBYVILLE ILLINOIS 62565

INDEX OF PAGES

1. COVER SHEET
2. INDEX OF PAGES AND HIGHWAY STANDARDS,SUMMARY OF QUANTITIES AND UTILITIES
3. GENERAL NOTES & RATES OF APPLICATIONS
4. TYPICAL CROSS SECTIONS
5. TIMBER RAIL DETAILS
6. SIGN LOCATION PAGE
7. PARKING LOT DETAILS
8. SCHEDULES
9. PLAN SHEET
10. CURVE DETAILS & BENCHMARKS
- 11-13 PROFILE SHEETS
- 14-27 CROSS SECTION SHEETS

HIGHWAY STANDARDS	
STANDARD NUMBER	STANDARD NAME
000001-05	STANDARD SYMBOLS, ABBREVIATIONS AND PATTERNS
280001-04	TEMPORARY EROSION CONTROL SYSTEMS
424001-05	CURB RAMPS FOR SIDEWALK
542401-01	METAL END SECTION FOR PIPE CULVERT
664001-02	CHAIN LINK FENCE
701801-04	LANE CLOSURE + CROSSWALK AN SIDEWALK CLOUSRES
701901-01	TRAFFIC CONTROL DEVICES
780001-02	TYPICAL PAVEMENT MARKINGS
BLR - 21-8	TRAFFIC CONTROL DEVICES ON RURAL LOCAL HIGHWAYS

* SPECIALTY ITEMS

CITY OF SHELBYVILLE ILLINOIS
 GENERAL DACEY TRAIL
 PHASE 4

GENERAL NOTES

CONTRACT NO. 95582			
RTE.	SECTION	COUNTY	TOTAL SHEETS
**	08-00048-00-BT	SHELBY	27
			SHEET NO. 3
** GENERAL DACEY TRAIL			

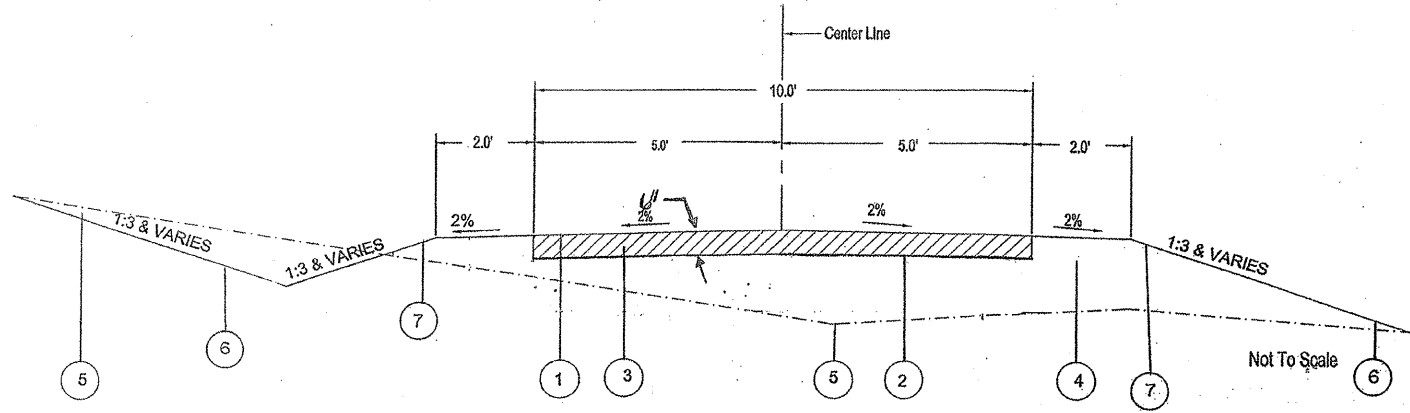
1. WHERE SECTION, OR SUB-SECTION MARKERS, ARE ENCOUNTERED, THE ENGINEER SHALL BE NOTIFIED BEFORE SUCH MONUMENTS ARE REMOVED. THE CONTRACTOR SHALL PROTECT AND CAREFULLY PRESERVE ALL PROPERTY MARKERS AND MONUMENTS UNTIL THE DEPARTMENT AND AUTHORIZED AGENT OR LAND SURVEYOR HAS WITNESSED OR OTHERWISE REFERENCED THEIR LOCATION.
2. NO U.S. ARMY CORPS OF ENGINEERS MONUMENTS OR MARKERS SHALL BE REMOVED.
3. STATIONING FOR THIS PROJECT HAS BEEN TRANSFERRED FROM THE AERIAL SURVEYS AND MAPPING. THEREFORE STATIONS REFERRED TO ARE ONLY APPROXIMATE AND SHOULD NOT BE USED AS EXACT DISTANCES. FIELD VERIFY LOCATIONS BEFORE COMMENCING CONSTRUCTION. THESE REFERENCE POINTS ARE INCLUDED TO ENABLE RE-CREATION OF FIELD SURVEYS FOR SPECIFIC SEGMENTS OF THE TRAIL.
4. ALL ELEVATIONS SHOWN ON THE PLANS ARE BASED ON AN U.S.G.S. DATUM.
5. ALL STATION AND OFFSET REFERENCE ARE TO THE TRAIL CENTERLINE.
6. IN ADDITION TO FIELD SURVEYS AND AERIAL SURVEYS, PLAN DIMENSIONS AND DETAILS RELATIVE TO EXISTING FACILITIES HAVE BEEN TAKEN FROM EXISTING MAPPING AND ARE SUBJECT TO CONSTRUCTION VARIATIONS. IT SHALL BE THE CONTRACTOR'S RESPONSIBILITY TO VERIFY SUCH DIMENSIONS AND DETAILS IN THE FIELD. SUCH VARIATIONS SHALL NOT BE CAUSE FOR ADDITIONAL COMPENSATION DUE TO A CHANGE IN THE SCOPE OF WORK. HOWEVER, THE CONTRACTOR WILL BE PAID FOR THE QUANTITY ACTUALLY FURNISHED AT THE UNIT PRICE BID FOR THE SAID ITEMS OF WORK.
7. THE CONTRACTOR SHALL BE RESPONSIBLE FOR PROTECTING UTILITY PROPERTY FROM CONSTRUCTION OPERATIONS AS OUTLINED IN ARTICLE 107.31 OF THE STANDARD SPECIFICATION.
8. THE CONTRACTOR SHALL TAKE REASONABLE PRECAUTIONS TO PROTECT PUBLIC AND PRIVATE PROPERTY. IF AT ANY TIME THE CONTRACTOR DAMAGES OR DESTROYS PUBLIC OR PRIVATE PROPERTY, THE CONTRACTOR SHALL, AT HIS OWN EXPENSE, RESTORE SUCH PROPERTY TO A CONDITION EQUAL TO THAT EXISTING BEFORE SUCH DAMAGE.
9. ACCESS TO ALL ENTRANCES SHALL BE MAINTAINED AT ALL TIMES.
10. TREES WHICH INTERFERE WITH CONSTRUCTION SHALL BE REMOVED ONLY AT THE DIRECTION OF THE ENGINEER.
11. THE CONTRACTOR SHALL EXERCISE CARE IN WORKING NEAR TREES, SHRUBS, AND BUSHES WHICH ARE NOT TO BE REMOVED SO AS NOT TO CAUSE ANY INJURY TO ROOTS, TRUNKS, AND BRANCHES.
12. ALL TREES AND STUMPS INDICATED ON THE PLANS AND DIRECTED BY THE ENGINEER FOR REMOVAL SHALL BE REMOVED AND DISPOSED OF BY THE CONTRACTOR OFF OF THE PROJECT SITE
13. NO PAYMENT FOR OVERHAUL WILL BE ALLOWED FOR EARTH MOVED FROM ANY SOURCE.
14. GRADING SHALL BE DONE BY HAND AROUND LIGHT POLES, GUARDRAIL, GUARDRAIL POST, UTILITY POLES, SIGN POST, SHRUBS, TREES, OR OTHER NATURAL OR MAN-MADE OBJECTS WHERE SHALLOW FILLS OR CUTS ARE ADJACENT TO THE ITEMS. IT IS THE INTENT THAT THE LIMITS OF CONSTRUCTION BE SUCH TO PRESERVE IN THE ORIGINAL STATE AS MUCH AREA OF TEMPORARY EASEMENTS AS POSSIBLE. THE DECISIONS AS TO ITEMS TO REMAIN IN PLACE SHALL BE DIRECTED BY THE ENGINEER. THIS WORK WILL NOT BE PAID FOR SEPARATELY, AND NO ADDITIONAL COMPENSATION WILL BE ALLOWED.
15. THE CONTRACTOR SHALL USE CARE IN GRADING OR EXCAVATING NEAR ANY AND ALL EXISTING ITEMS WHICH ARE NOT TO BE REMOVED. ANY DAMAGE DONE TO THESE EXISTING ITEMS BY THE CONTRACTOR'S OPERATIONS SHALL BE REPAIRED FOR BY HIM AT HIS OWN EXPENSE.

16. IF SO DIRECTED BY THE ENGINEER, DITCHES ADJACENT TO EMBANKMENTS SHALL BE CONSTRUCTED PRIOR TO STARTING THE CONSTRUCTION OF THE EMBANKMENT FILL.
17. SEEDING SHALL BE DONE ON ALL AREAS THAT ARE DISTURBED BY CONSTRUCTION OPERATIONS AS DIRECTED BY THE ENGINEER. SEEDING SHALL BE PAID FOR ONLY WITHIN THE PROPOSED RIGHT-OF-WAY OR EASEMENT LIMITS. ALL AREAS DISTURBED BY THE CONTRACTOR OUTSIDE THE PROPOSED CONSTRUCTION LIMITS SHALL BE SEEDED, AS DIRECTED BY THE ENGINEER, AT THE CONTRACTOR'S EXPENSE.
18. COURSE AGGREGATES GRADATION CA-10 MAY BE USED WHENEVER COURSE AGGREGATE CA-6 IS SPECIFIED IN THE STANDARD SPECIFICATION.
19. BEFORE ORDERING ANY MATERIALS OR DOING ANY WORK, THE CONTRACTOR AND/OR SUBCONTRACTORS SHALL VERIFY DIMENSIONS AND ELEVATIONS AT THE SITE AND BE RESPONSIBLE FOR THE CORRECTNESS OF SAME RELATING TO EXISTING UTILITIES, STORM SEWERS, WATER MAINS, FIELD TILES, ROADWAYS, CURB AND GUTTER, ETC. IF ANY DEVIATIONS ARE NOTED, THEY SHALL BE REPORTED TO THE PROJECTS RESIDENT ENGINEER PRIOR TO PROCEEDING WITH THE WORK.
20. CONTRACTOR SHALL NOTIFY THE CITY OF SHELBYVILLE, UNITED STATES ARMY COPRS OF ENGINEERS AND THE RESIDENT ENGINEER 48 HOURS IN ADVANCE OF CONSTRUCTION WORK.
21. THE CONTRACTOR SHALL BE RESPONSIBLE FOR REMOVING ALL MUD, DIRT AND DEBRIS DEPOSITED ON THE ROADWAYS FROM VEHICLES EXITING OR ENTERING THE SITE.
22. BEFORE ORDERING ANY PIPE CULVERTS, THE CONTRACTOR SHALL CONSULT THE ENGINEER FOR THE EXACT LENGTHS.
23. IF ANY CORPS OF ENGINEER MARKERS ARE FOUND OR ENCOUNTERED THE ENGINEER SHALL BE NOTIFIED. NO CORPS OF ENGINEER MONUMENTS OR MARKERS SHALL BE REMOVED.
24. THE U.S. ARMY CORPS OF ENGINEERS HAS INSTRUMENTS SUCH AS SURVEY POINTS, ETC THAT MUST STAY PROTECTED AT ALL TIMES. THESE ITEMS ARE CRUCIAL FOR THE MONITORING OF THE DAM. THE U.S. ARMY CORP HAS HISTORIC DATA TIED TO THESE POINTS AND IF THE POINTS ARE DISTURBED OR DESTROYED IT CAN NOT BE RESTORED. THE CONTRACTOR MUST FE THESE POINTS "SAFE" AT ALL TIMES. THESE POINTS WILL BE MARKED BY THE CORP OF ENGINEERS AND THE ENGINEER PRIOR TO THE START OF CONSTRUCTION.

RATES OF APPLICATION

NITROGEN FERTILIZER NUTRIENTS	90 LBS/ACRE
PHOSPHORUS FERTILIZER NUTRIENTS	90 LBS/ACRE
POTASSIUM FERTILIZER NUTREINTS	90 LBS/ACRE
MULCH METHOD 2	2.0 TONS/ACRE
BITUMINOUS MATERIALS (PRIME COAT)	0.35 GAL/SQ YD
BITUMINOUS MATERIALS (SEAL COAT)	0.30 GAL/SQ YD
SEAL COAT AGGREGATE	25 LBS/SQ YD
AGGREGATE BASE COURSE TYPE A	2.1 TONS/CU YD

CITY OF SHELBYVILLE ILLINOIS
 GENERAL DACEY TRAIL
 PHASE 4

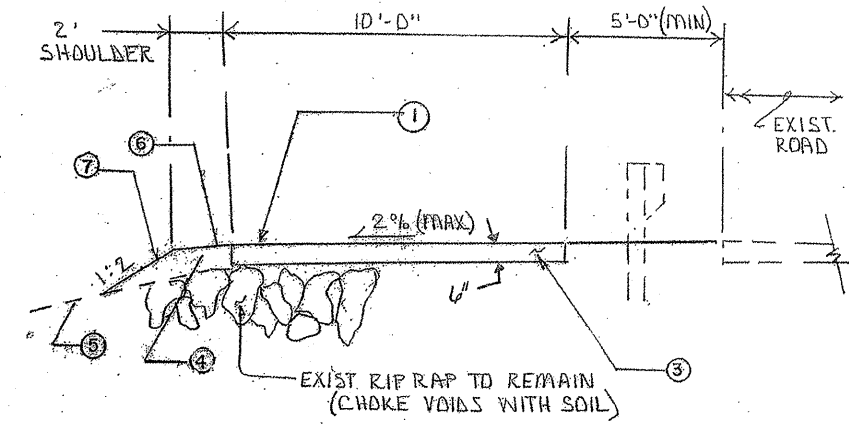


TYPICAL CUT SECTION

TYPICAL FILL SECTION

TYPICAL PROPOSED CROSS SECTION

STA 50+00 TO STA 55+00
 STA 400+00 TO STA 420+00
 STA 441+00 TO STA 442+75



TYPICAL PROPOSED CROSS SECTION

STA 420+00 TO STA 433+00
 STA 435+50 TO STA 441+00

BITUMINOUS SEAL COAT A-2 SCHEDULE

STA TO STA	BITUMINOUS MATERIALS PRIME	BITUMINOUS MATERIALS COVER & SEAL CT.	SEAL COAT AGGREGATE
400+00 TO 420+00	838 GAL	1676 GAL	70 TON
420+00 TO 433+00	505 GAL	975 GAL	37 TON
435+00 TO 442+75	401 GAL	752 GAL	29 TON
50+00 TO 55+00	273 GAL	513 GAL	20 TON
1+00 TO 1+98	38 GAL	72 GAL	3 TON
PARKING LOT 425+50	223 GAL	446 GAL	19 TON
TOTALS	2278 GAL	4434 GAL	178 TON

TREE REMOVAL, ACRES SCHEDULE

STA TO STA	QUANTITY
403+00 TO 409+00	0.3 ACRES
419+00 TO 421+00	0.1 ACRES
TOTALS	0.4 ACRES

EARTHWORK SUMMARY

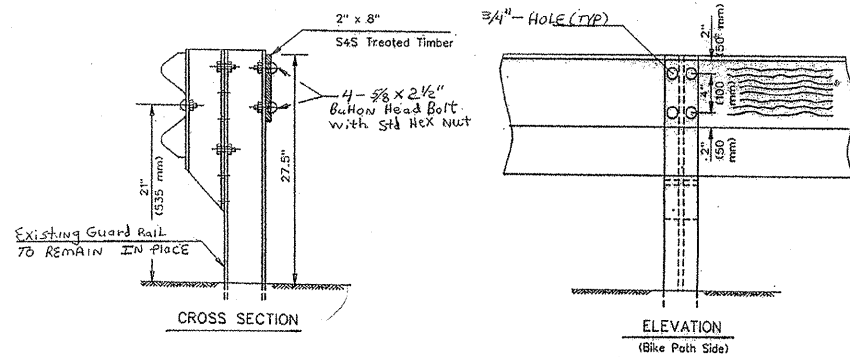
STA TO STA	EARTH EXCAVATION	FURNISHED EXCAVATION
400+00 TO 420+00	885 CU.YD.	447 CU.YD.
420+00 TO 433+00	18 CU.YD.	725 CU.YD.
436+00 TO 442+75	65 CU.YD.	156 CU.YD.
50+00 TO 55+00	9 CU.YD.	750 CU.YD.
1+00 TO 1+98	19 CU.YD.	6 CU.YD.
TOTALS	996 CU.YD.	2084 CU.YD.

LEGEND

1. BITUMINOUS SURFACE COAT (A-2); BITUMINOUS MATERIALS (PRIME COAT; MC 30); 2 LAYERS OF BITUMINOUS SEAL COAT (A-2) (HFE-150 AND CA-16 CRUSHED STONE)
2. EXISTING SUBGRADE
3. AGGREGATE BASE COURSE 6"
4. EARTH EXCAVATION & FURNISHED BORROW
5. EXISTING GROUND PROFILE
6. PROPOSED GROUND PROFILE
7. SEEDING CLASS 2 WITH MULCH METHOD 2 (**)

(**) STA. 50 + 00 TO STA. 62 + 00 SHALL BE SEEDED WITH A PRAIRIE MIX SEED. SEE THE CROSS SECTIONS AND SPECIAL PROVISIONS

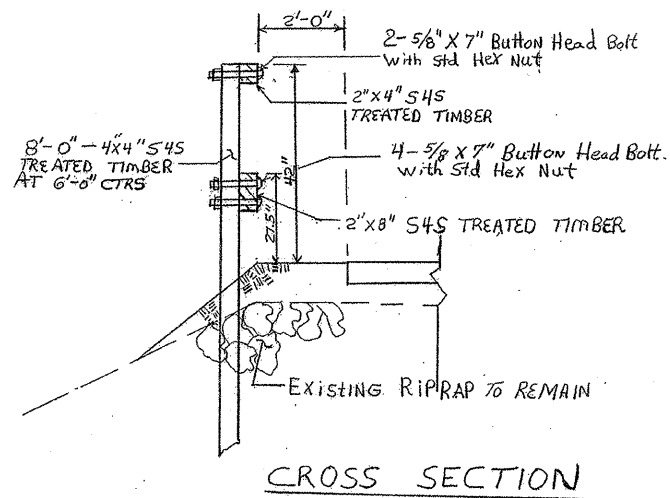
CITY OF SHELBYVILLE ILLINOIS
 GENERAL DACEY TRAIL
 PHASE 4



TIMBER RUB RAIL

TIMBER RUB RAIL

STA TO STA	O/S	LENGTH
436+00 TO 440+00	LEFT	400 FEET
	TOTAL	400 FEET

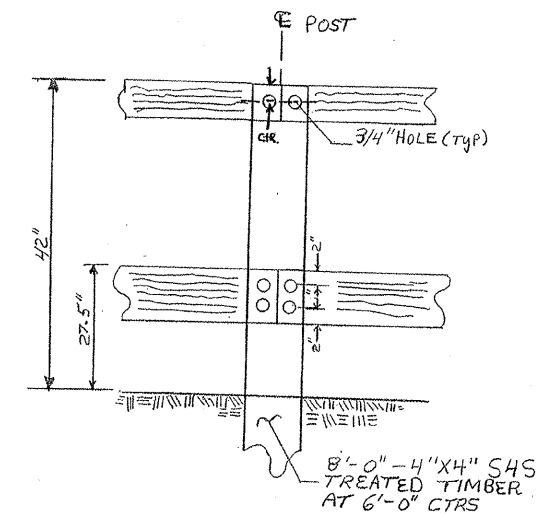


CROSS SECTION

TIMBER BICYCLE RAIL

TIMBER BICYCLE RAIL

STA TO STA	O/S	LENGTH
419+00 TO 420+00	LT.	100 FEET
419+00 TO 420+00	RT.	100 FEET
405+20 TO 406+50	LT.	130 FEET
405+20 TO 406+50	RT.	130 FEET
	TOTAL	460 FEET



ELEVATION
(BIKE PATH SIDE)

NOTES

Bolts, cap screws, and nuts shall conform to the requirement of ASTM designation A-307 except for the high strength bolts, nuts and washers noted which shall conform to AASHTO M-232.

All bolts, nuts, cap screws, washers and lock washers shall be galvanized in accordance with AASHTO M-232.

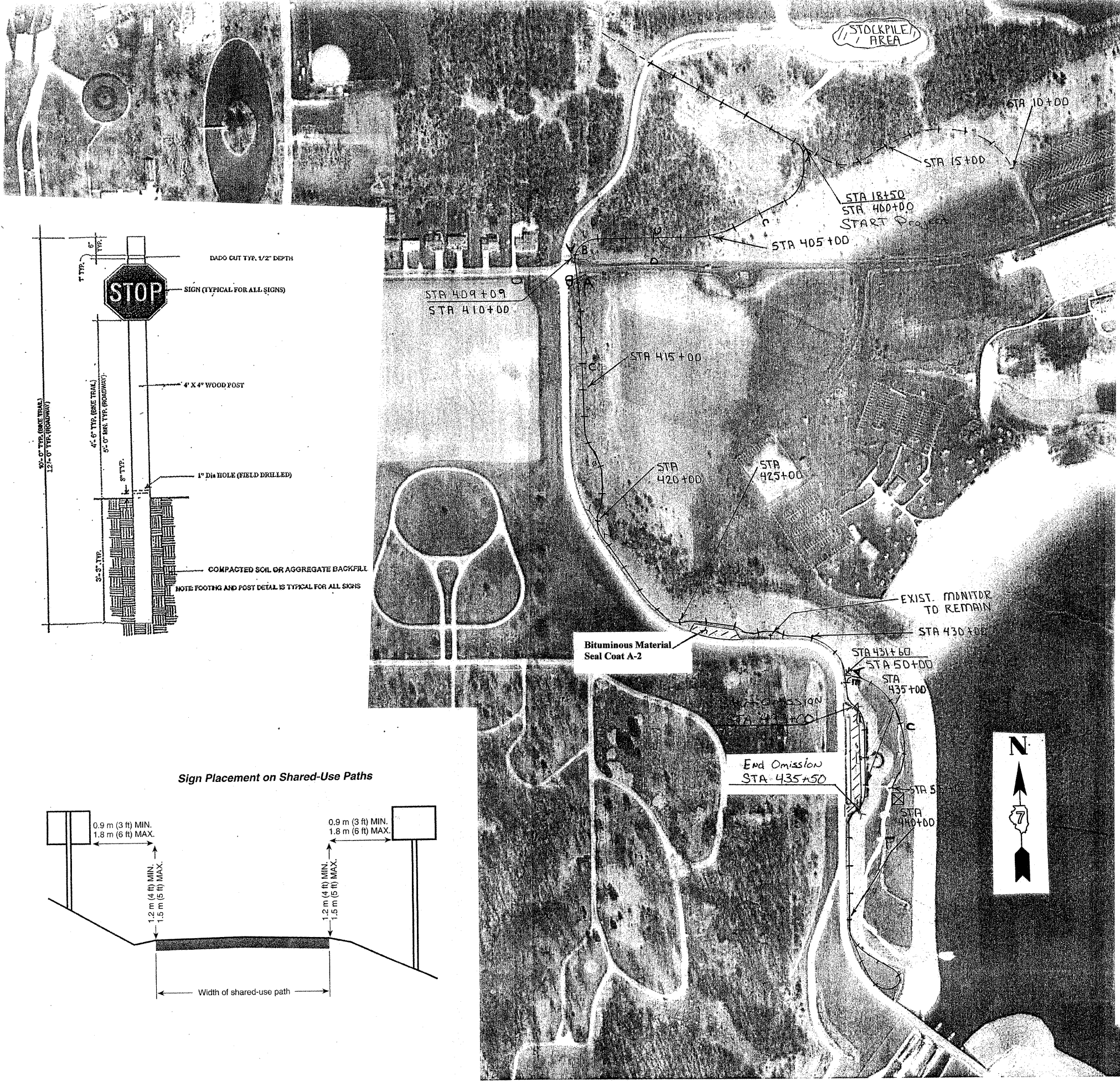
All holes in wooden post and rails shall be field drilled by the contractor. The cost of drilling shall be included in the unit price for wooden rub railing and wooden bicycle rail.

All field drilled holes in the metal post shall be coated with approved zinc rich paint before the erection of the wooden rails.

All wood material for the rub rail and bicycle railing shall conform to the applicable parts of section 1007 of the standard specification for road and bridge construction.

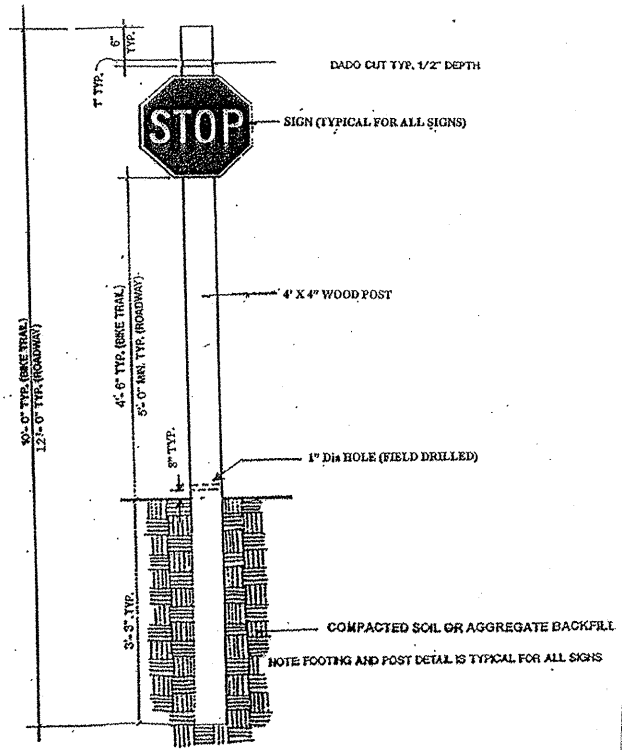
All wood shall have preservative treatment in accordance with article 1007.12 of the standard specifications for road and bridge construction.

CITY OF SHELBYVILLE ILLINOIS
 GENERAL DACEY TRAIL
 PHASE 4

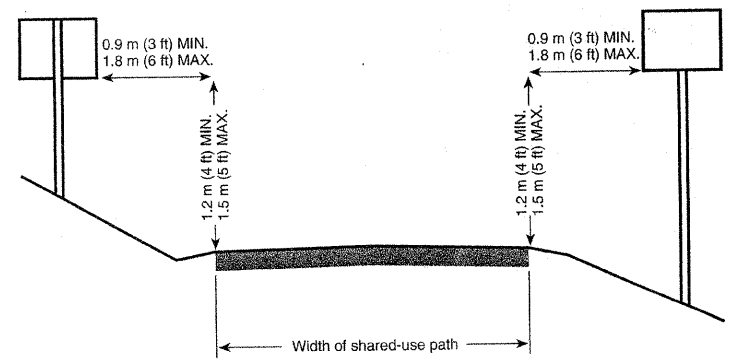


SIGN SCHEDULE

STA.	O/S	SIGN	QUANTITY (SQ. FT.)	4"X4" POST LENGTH	LETTER	SIZE
400+05	LEFT	R 1-1	2.25 SQ. FT.	10 FOOT	A	18"X18"
403+10	LEFT	W 3-1	2.25 SQ. FT.	10 FOOT	C	18"X18"
407+01	RIGHT	R 1-1	2.25 SQ. FT.	10 FOOT	A	18"X18"
410+01	RIGHT	W 3-1	2.25 SQ. FT.	10 FOOT	C	18"X18"
410+01	LEFT	R 5-3	4.00 SQ. FT.	10 FOOT	B	24"X24"
411+10	LEFT	R 1-1	2.25 SQ. FT.	10 FOOT	A	18"X18"
411+10	RIGHT	R 5-3	4.00 SQ. FT.	10 FOOT	B	24"X24"
414+10	LEFT	W 3-1	2.25 SQ. FT.	10 FOOT	C	18"X18"
50+10	LEFT	R 1-1	2.25 SQ. FT.	10 FOOT	A	18"X18"
50+10	RIGHT	W 7-5	2.25 SQ. FT.	10 FOOT	E	18"X18"
53+10	LEFT	W 3-1	2.25 SQ. FT.	10 FOOT	C	18"X18"
ACCESS RD.	NORTH	W 11-1	4.00 SQ. FT.	12 FOOT	D	24"X24"
N 9 TH ST.	SOUTH	W 11-1	4.00 SQ. FT.	12 FOOT	D	24"X24"
		TOTAL	36.3 SQ. FT.			



Sign Placement on Shared-Use Paths



SIGN LEGEND

SIGN NAME	M.U.T.C.D. CODE
STOP	R 1-1
NO MOTOR VEHICLES	R 5-3
STOP AHEAD	W 3-1
BICYCLE WARNING	W 11-1
HILL	W 7-5

SIGN LOCATION PAGE

SCALE: N/A DATE: 04-04-09 APPROVED BY: SBC DRAWN BY: CLP REVISION: KRP
GENERAL DACEY TRAIL #4 DRAWING NUMBER: 06-51-01

PAINT PAVEMENT LINE 4"

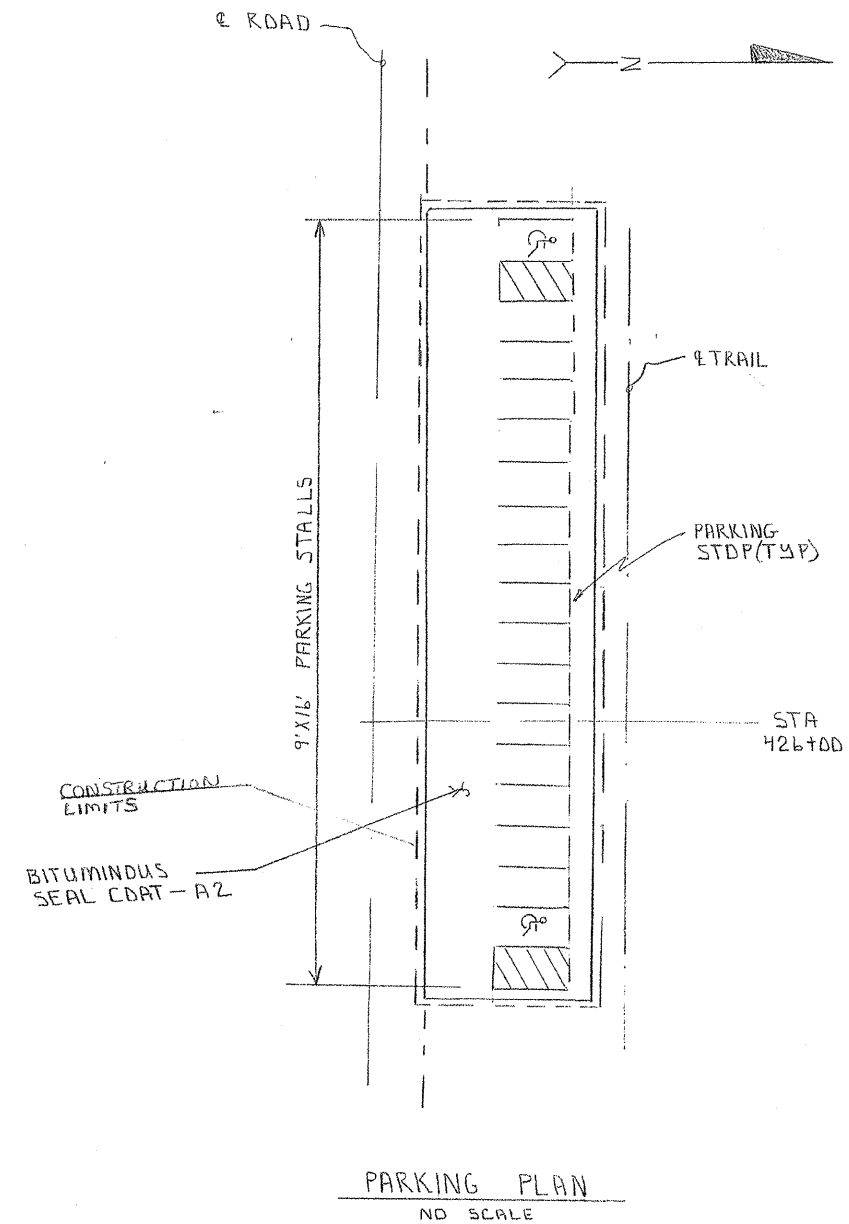
LOCATION	TYPE	COLOR	QUANTITY
PARKING LOT 426+00+/-	SPACE LINES	YELLOW	320 FOOT
PARKING LOT 426+00+/-	DIAGONALS	YELLOW	180 FOOT
	TOTAL		500 FOOT

PAINT PAVEMENT LETTERS AND SYMBOLS, APPLIED

LOCATION	TYPE	COLOR	QUANTITY
PARKING LOT 426+00+/-	HANDICAPPED SYMBOL	YELLOW	9.2 SQ. FT.
	TOTAL		9.2 SQ. FT.

PRECAST CONCRETE PARKING BLOCK

STA TO STA	LOCATION	QUANTITY
425 +15 TO 426+87	END OF PARKING SPACE	17 EACH
	TOTAL	17 EACH



08-00048-00-BT		SCALE: N/A	APPROVED BY:	DRAWN BY: SAS
DATE: 6-30-09				REVISED: CHP
Parking Lot		DRAWING NUMBER: 048-01-PL		

RTE.	SECTION	COUNTY	TOTAL SHEETS	SHEET NO.
**	08-00048-00-BT	SHELBY	27	8

** GENERAL DACEY TRAIL

BOLLARDS

STA	O/S	QUANTITY
410+39	C.L.	1.0 EACH
410+67	C.L.	1.0 EACH
	TOTAL	2.0 EACH

PAINT PAVEMENT LINE 6"

STA TO STA	OFFSET	COLOR	QUANTITY
410 + 40 TO 410+66	11' LEFT	WHITE	26 FOOT
410 + 40 TO 410+66	11' RIGHT	WHITE	26 FOOT
		TOTAL	52 FOOT

PAINT PAVEMENT LINE 24"

STA TO STA	OFFSET	COLOR	QUANTITY
410+40 TO 410+53	14' LEFT	WHITE	13 FOOT
		TOTAL	13 FOOT

SIDEWALK REMOVAL SCHEDULE

LOCATIONS	WIDTH	QUANTITY
STA 52+80 TO STA 55+00	4.0	888 SQ. FT.
STA 440+00 TO STA 442+75	4.0	1100 SQ. FT.
	TOTAL	1988 SQ. FT.

**PORTLAND CEMENT CONCRETE
SIDEWALK 5" SCHEDULE**

STA TO STA	WIDTH	SQ FT
STA 410+40 TO 410+38	10	20
STA 410+36 TO 410+26	10	100
STA 410+66 TO 410+68	10	20
STA 410+70 TO 410+80	10	100
STA 55+10 TO 55+14	8	32
	TOTAL	272

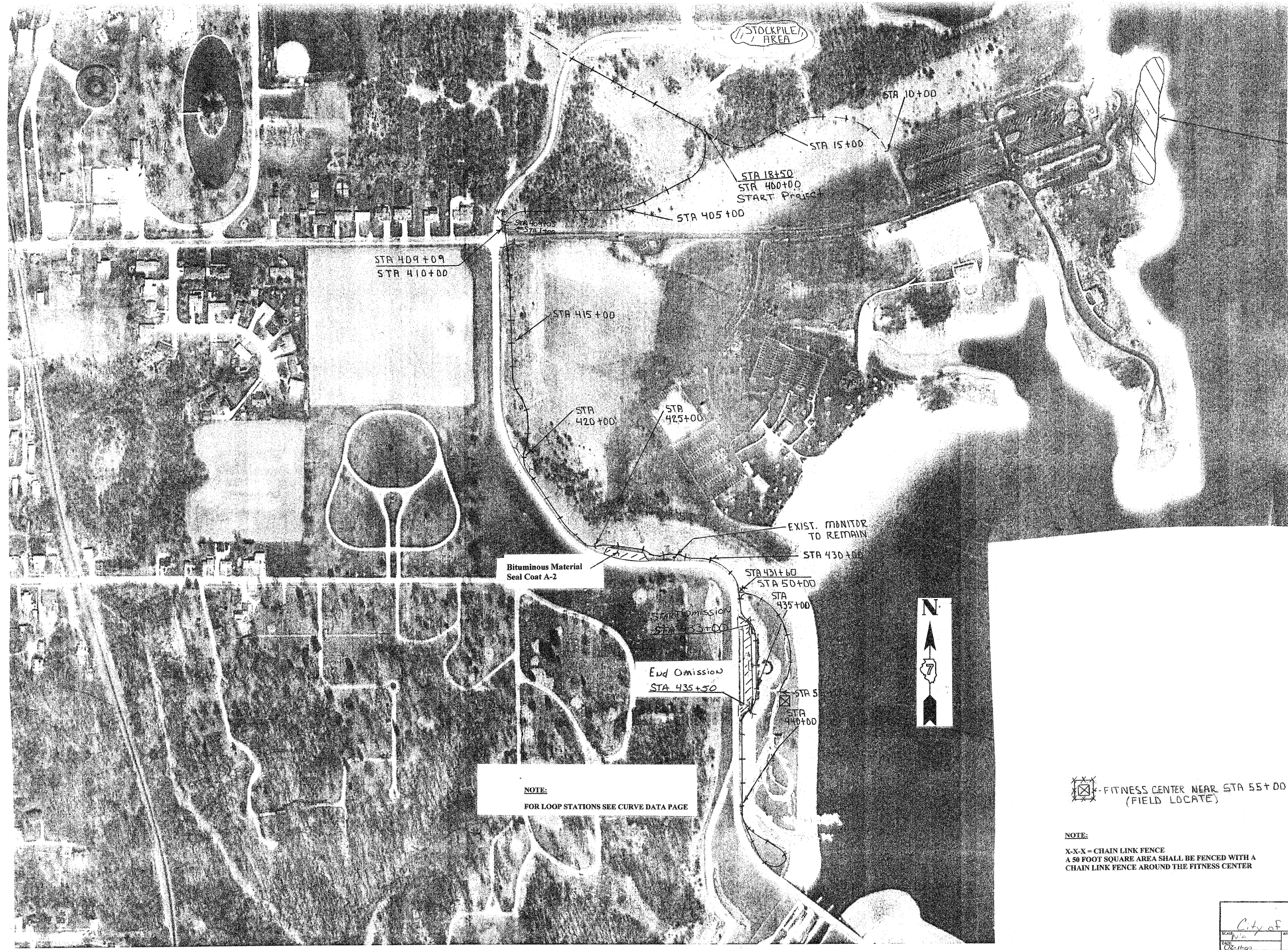
PIPE CULVERT SCHEDULE

SIZE	TYPE	LOCATION	LENGTH	METAL END SECTIONS
8"	1	433+00	32 FOOT	0
8"	1	435+20	32 FOOT	0
10"	1	1+98	32 FOOT	0
10"	1	401+00	24 FOOT	0
10"	1	410+28	24 FOOT	0
15"	1	410+95	32 FOOT	0
24"	2	419+61	38 FOOT	0
42"	2	405+80	36 FOOT	2

DETECTABLE WARNINGS

STA TO STA	WIDTH	SQ. FT.
410+38 TO 410+36	10	20
410+68 TO 410+70	10	20
	TOTAL	40 SQ. FT.

CITY OF SHELBYVILLE ILLINOIS
GENERAL DACEY TRAIL
PHASE 4



BORROW AREA

Bituminous Material Seal Coat A-2

EXIST. MONITOR TO REMAIN

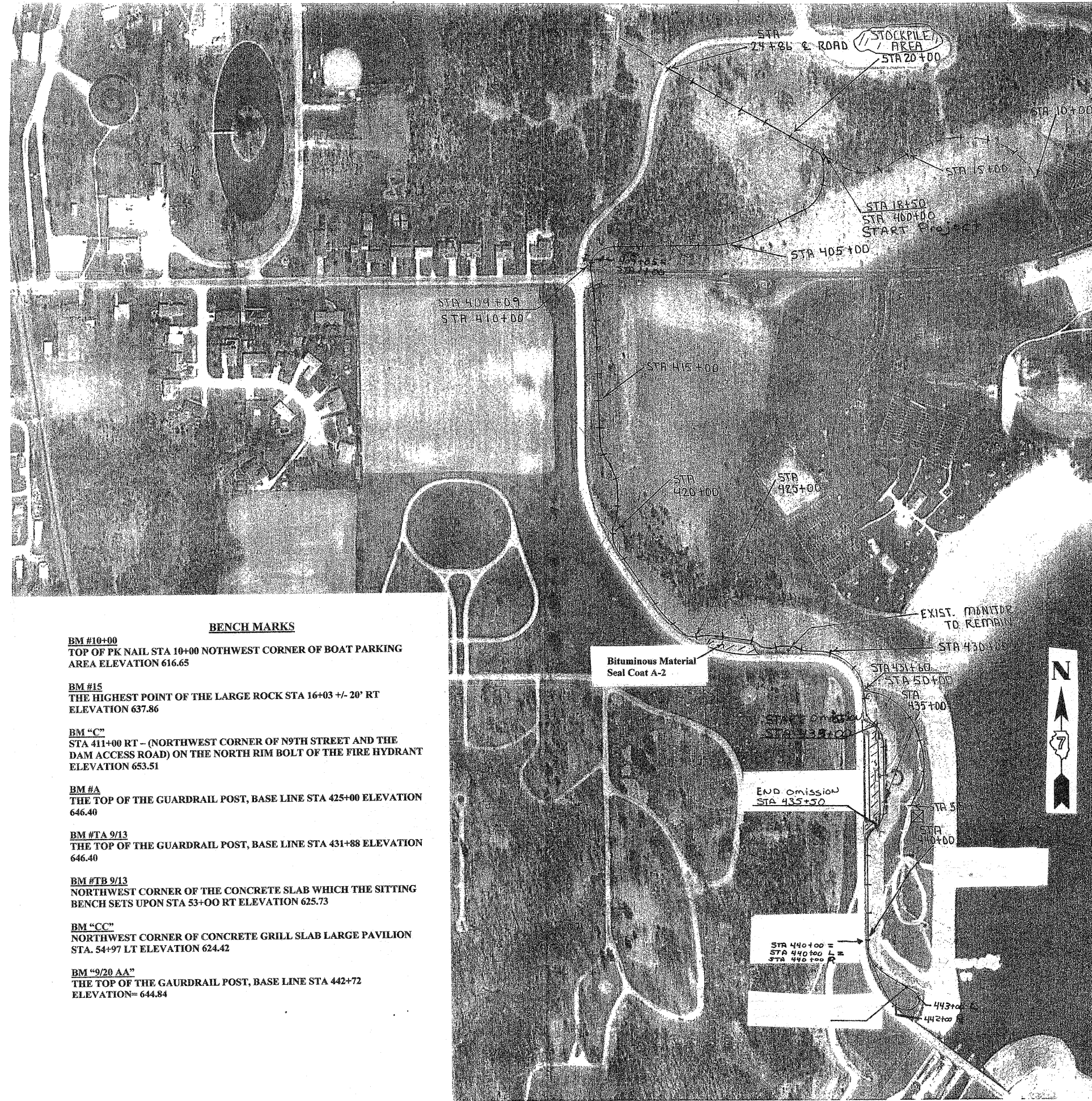
End Omission STA 435+50

NOTE:
FOR LOOP STATIONS SEE CURVE DATA PAGE

⊠ - FITNESS CENTER NEAR STA 55+00 (FIELD LOCATE)

NOTE:
X-X-X = CHAIN LINK FENCE
A 50 FOOT SQUARE AREA SHALL BE FENCED WITH A CHAIN LINK FENCE AROUND THE FITNESS CENTER

City of Shelbyville		DESIGN BY SRS	DRAWN BY CAP
DATE 02-11-02	APPROVED BY SRS	REVISION CAP	DRAWING NUMBER
General Dacey Trail 4			
Plan View			



BENCH MARKS

- BM #10+00**
TOP OF PK NAIL STA 10+00 NORTHWEST CORNER OF BOAT PARKING AREA ELEVATION 616.65
- BM #15**
THE HIGHEST POINT OF THE LARGE ROCK STA 16+03 +/- 20' RT ELEVATION 637.86
- BM "C"**
STA 411+00 RT - (NORTHWEST CORNER OF N9TH STREET AND THE DAM ACCESS ROAD) ON THE NORTH RIM BOLT OF THE FIRE HYDRANT ELEVATION 653.51
- BM #A**
THE TOP OF THE GUARDRAIL POST, BASE LINE STA 425+00 ELEVATION 646.40
- BM #TA 9/13**
THE TOP OF THE GUARDRAIL POST, BASE LINE STA 431+88 ELEVATION 646.40
- BM #TB 9/13**
NORTHWEST CORNER OF THE CONCRETE SLAB WHICH THE SITTING BENCH SETS UPON STA 53+00 RT ELEVATION 625.73
- BM "CC"**
NORTHWEST CORNER OF CONCRETE GRILL SLAB LARGE PAVILION STA. 54+97 LT ELEVATION 624.42
- BM "9/20 AA"**
THE TOP OF THE GAURDRAIL POST, BASE LINE STA 442+72 ELEVATION= 644.84

Curve #1
 P.I. STA. = 18+50
 Δ = 55-00-00
 D = 49-42-37
 R = 115.26
 T = 60.00
 L = 110.64
 E = 14.68
 P.C. STA. = 17+90.00
 P.T. STA. = 19+00.64

Curve #2
 P.I. STA. = 400+75
 Δ = 64-30-00
 D = 40-10-04
 R = 142.64
 T = 90.00
 L = 160.58
 E = 26.02
 P.C. STA. = 399+85.00
 P.T. STA. = 401+45.58

Curve #3
 P.I. STA. = 404+61
 Δ = 26-30-00
 D = 11-15-39
 R = 115.26
 T = 60.00
 L = 110.64
 E = 14.68
 P.C. STA. 403+41.00
 P.T. STA. 405+76.33

Curve #4
 P.I. STA. = 408+80
 Δ = 89-30-00
 D = 51-38-04
 R = 110.96
 T = 110.00
 L = 173.33
 E = 45.28
 P.C. STA. 407+70.00
 P.T. STA. 409.43.33

Curve #5
 P.I. STA. = 416+82
 Δ = 44-30-00
 D = 42-37-08
 R = 134.44
 T = 55.00
 L = 104.41
 E = 10.82
 P.C. STA. = 416+27.00
 P.T. STA. = 417+31.41

Curve #6
 P.I. STA. = 417+95
 Δ = 44-00-00
 D = 38-34-54
 R = 148.51
 T = 60.00
 L = 114.04
 E = 11.66
 P.C. STA. = 417+35.00
 P.T. STA. = 418+49.04

Curve #7
 P.I. STA. = 419+20
 Δ = 26-30-00
 D = 44-58-16
 R = 127.41
 T = 30.00
 L = 58.93
 E = 3.48
 P.C. STA. = 418+90.00
 P.T. STA. = 419+48.93

Curve #8
 P.I. STA. = 420+45
 Δ = 69-00-00
 D = 43-45-14
 R = 130.95
 T = 90.00
 L = 157.70
 E = 27.95
 P.C. STA. = 419+55.00
 P.T. STA. = 421+12.70

Curve #9
 P.I. STA. = 424+60
 Δ = 51-00-00
 D = 34-09-39
 R = 167.72
 T = 80.00
 L = 149.29
 E = 18.10
 P.C. STA. = 423.80.00
 P.T. STA. = 425.29.29

Curve #10
 P.I. STA. = 426+90
 Δ = 34-15-00
 D = 44-08-05
 R = 129.82
 L = 77.60
 E = 6.03
 P.C. STA. = 426+50.00
 P.T. STA. = 427+27.60

Curve #11
 P.I. STA. = 427+70
 Δ = 50-45-00
 D = 54-21-03
 R = 105.42
 T = 50.00
 L = 93.37
 E = 11.26
 P.C. STA. = 427+30.00
 P.T. STA. = 428+23.37

Curve #12
 P.I. STA. = 428+85
 Δ = 33-30-00
 D = 28-44-24
 T = 60.00
 L = 116.56
 E = 8.83
 P.C. STA. = 428+25.00
 P.T. STA. = 429+41.56

Curve #13
 P.I. STA. = 431+10 "BK"
 Δ = 84-30-00
 D = 32-31-39
 R = 176.15
 T = 160.00
 L = 259.78
 E = 61.82
 P.C. STA. = 429+50.00
 P.T. STA. = 432+09.78

Curve #14
 P.I. STA. = 431+51.00 "AH"
 Δ = 49-30-30
 D = 48-02-03
 R = 119.28
 T = 55.00
 L = 103.07
 E = 12.07
 P.C. STA. = 430+96.00
 P.T. STA. = 431+99.07

Curve #15
 P.I. STA. = 432+54.07 "AH"
 Δ = 53-00-00
 D = 51-56-22
 R = 110.31
 T = 55.00
 L = 102.04
 E = 12.95
 P.C. STA. = 431+99.07
 P.T. STA. = 433+01.11

Curve #17
 P.I. STA. = 436+73.05
 Δ = 49-30-00
 D = 44-01-22
 R = 130.15
 T = 60.00
 L = 112.16
 E = 13.16
 P.C. STA. = 436+13.05
 P.T. STA. = 437+25.49

Curve #18A
 P.I. STA. = 440+85.00 "LT"
 Δ = 46-45-00
 D = 26-04-04
 R = 219.80
 T = 95.00
 L = 179.34
 E = 19.65
 P.C. STA. = 439+90.00
 P.T. STA. = 441+69.34

Curve #18B
 P.I. STA. = 440+45.00 "RT"
 Δ = 20-30-00
 D = 10-21-39
 R = 553.01
 T = 100.00
 L = 197.86
 E = 8.97
 P.C. STA. = 439+45.00
 P.T. STA. = 441+42.86

Curve #19
 P.I. STA. = 443+20.00 "LT"
 Δ = 89-15-00
 D = 59-31-37
 R = 96.25
 T = 95.00
 L = 149.93
 E = 38.99
 P.C. STA. = 442+25.00
 P.T. STA. = 443+74.93

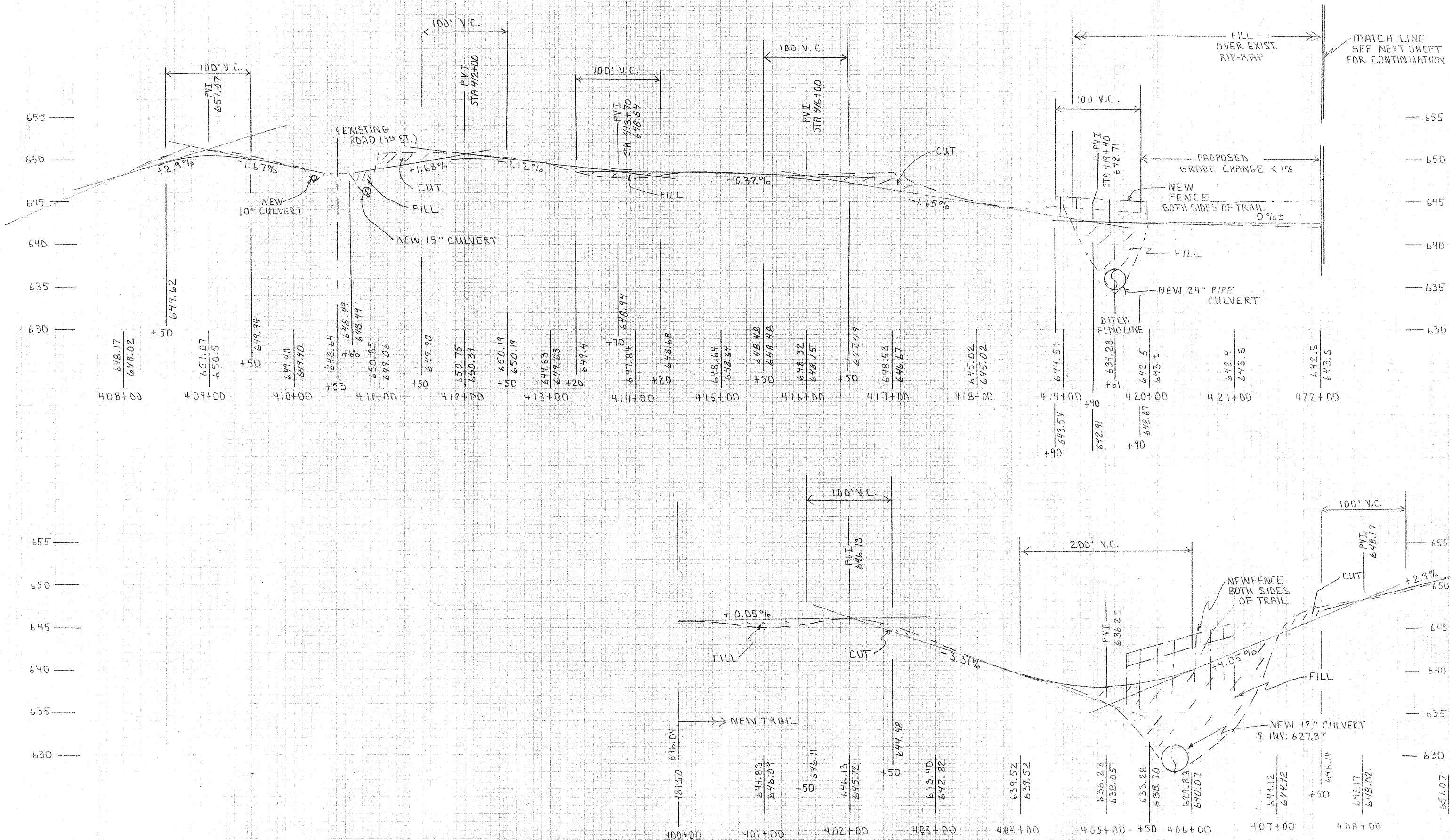
Curve #20
 P.I. STA. = 442+45.00 "RT"
 Δ = 77-30-00
 D = 51-05-39
 R = 112.14
 T = 90.00
 L = 151.68
 E = 31.65
 P.C. STA. = 441+55.00
 P.T. STA. = 443+06.68

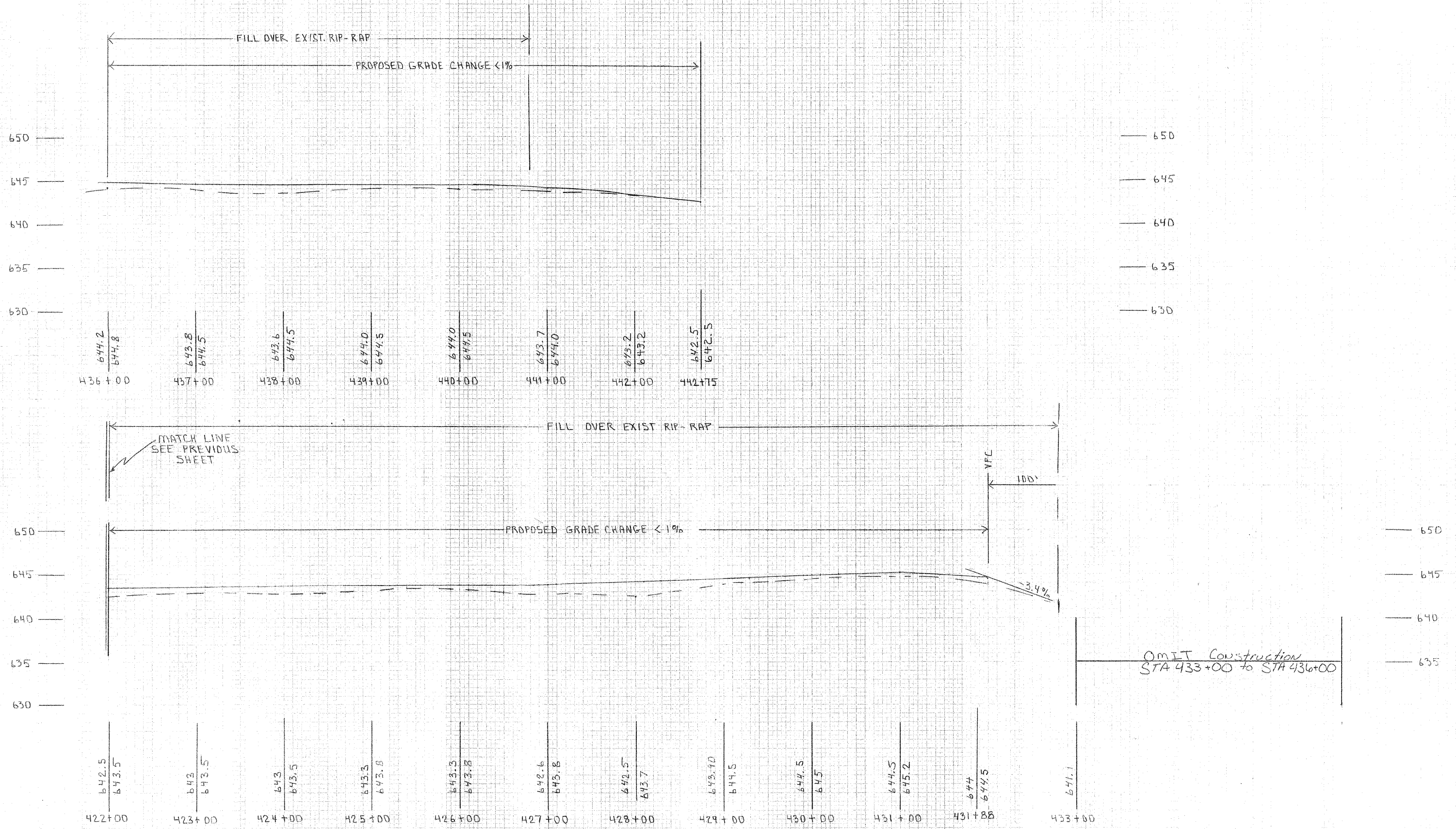
Curve #A (Lower Level)
 P.I. STA. = 53+15.00
 Δ = 92-15-00
 D = 18-55-04
 R = 302.87
 T = 315.00
 L = 487.64
 E = 134.12
 P.C. STA. = 50+00.00
 P.T. STA. = 54+87.64

Curve #B (lower level)
 P.I. STA. = 56+50.00
 Δ = 35-15-00
 D = 33-05-46
 R = 173.12
 T = 55.00
 L = 106.51
 E = 8.53
 P.C. STA. = 55+95.00
 P.T. STA. = 57+01.51

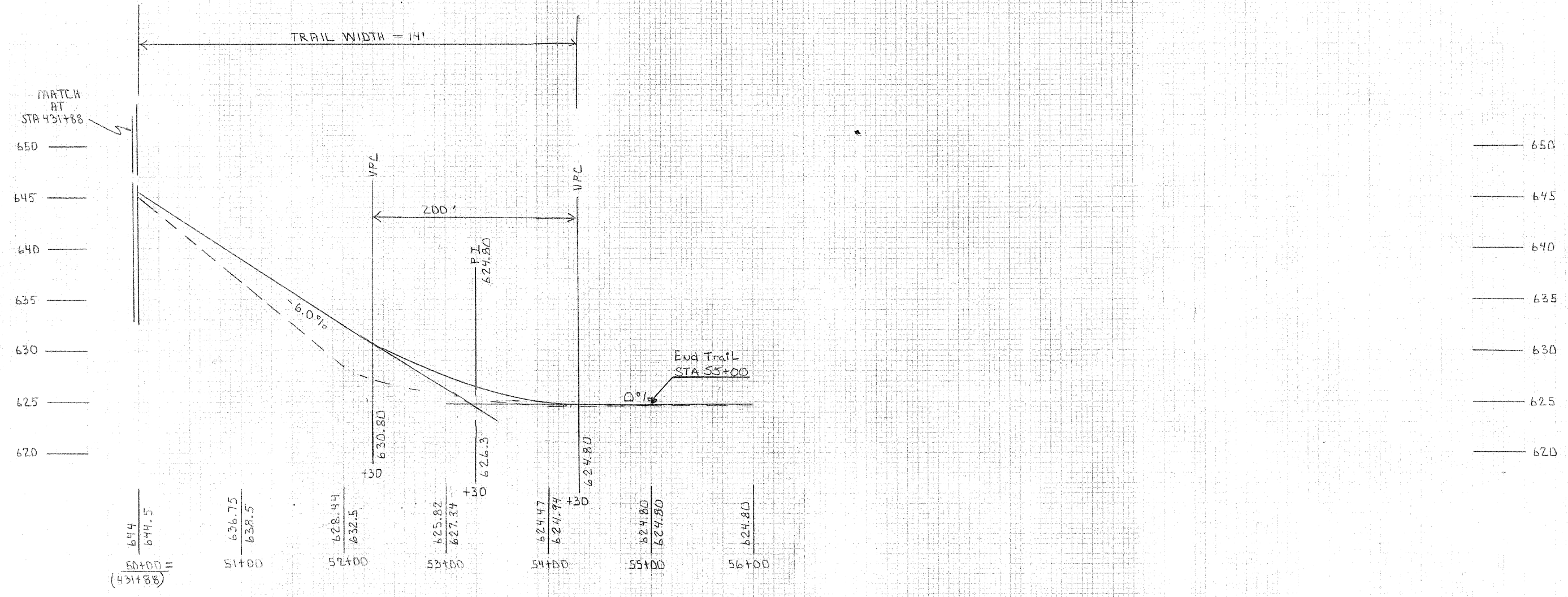
Curve #C (Lower Level)
 P.I. STA. = 57+51.51
 Δ = 56-45-00
 D = 61-53-41
 R = 92.57
 T = 50.00
 L = 91.69
 E = 12.64
 P.C. STA. = 57+01.51
 P.T. STA. = 57+93.20

CITY OF SHELBYVILLE		
SCALE: N/A	APPROVED BY: SAS	DRAWN BY: SAS
DATE: 02-11-09		CHP
CURVE DATA		DRAWING NUMBER



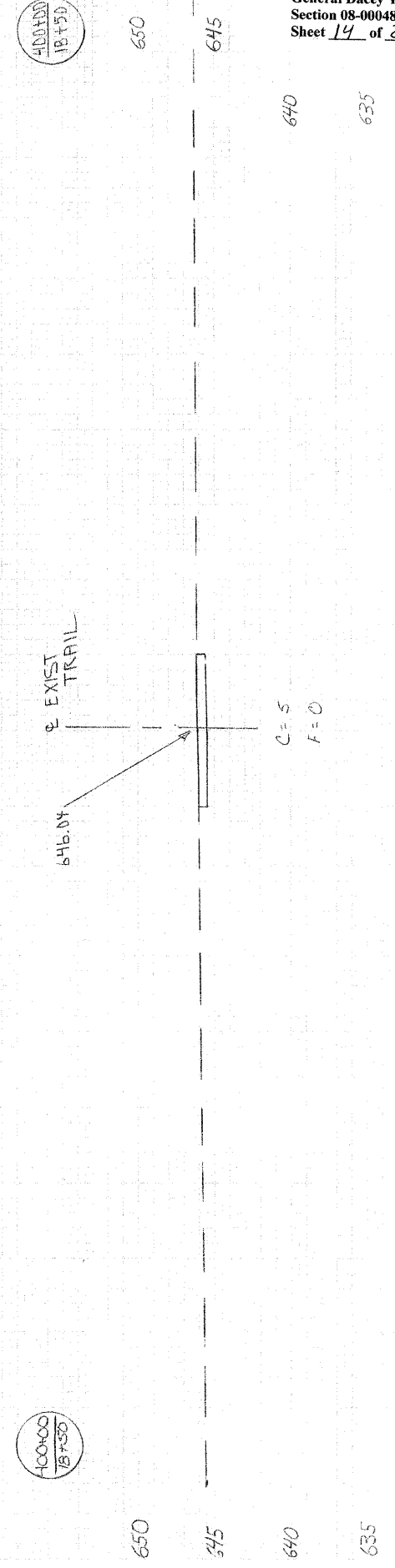
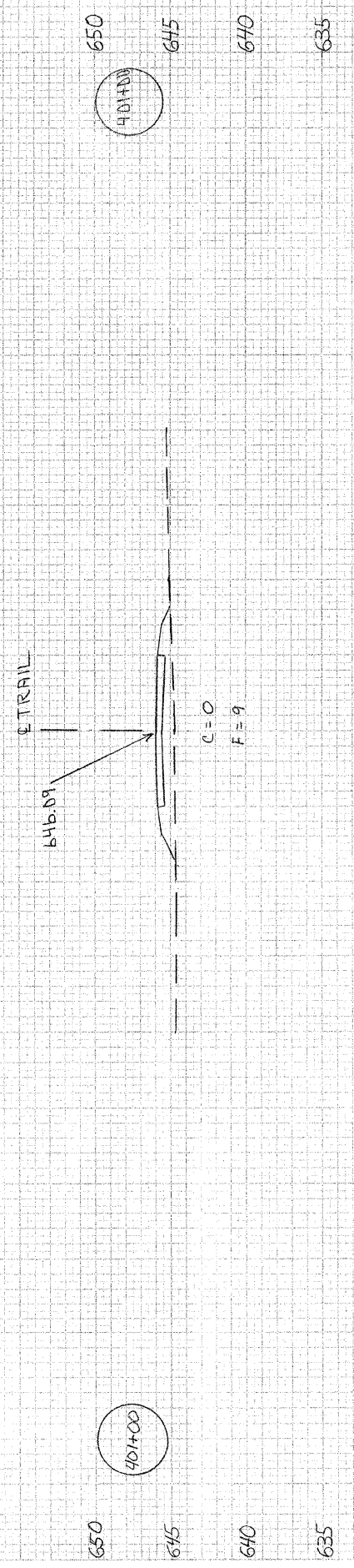
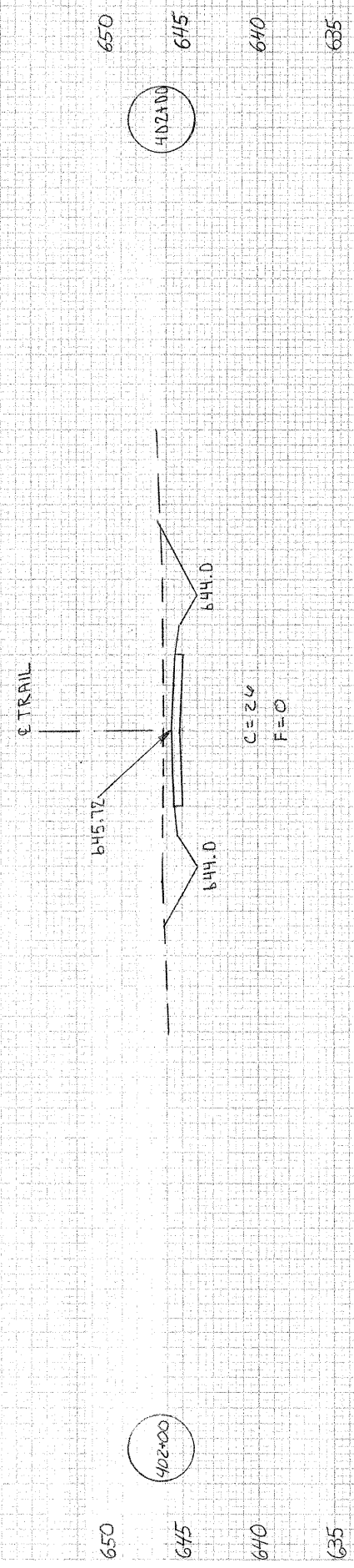


OMIT Construction
 STA 433+00 to STA 436+00

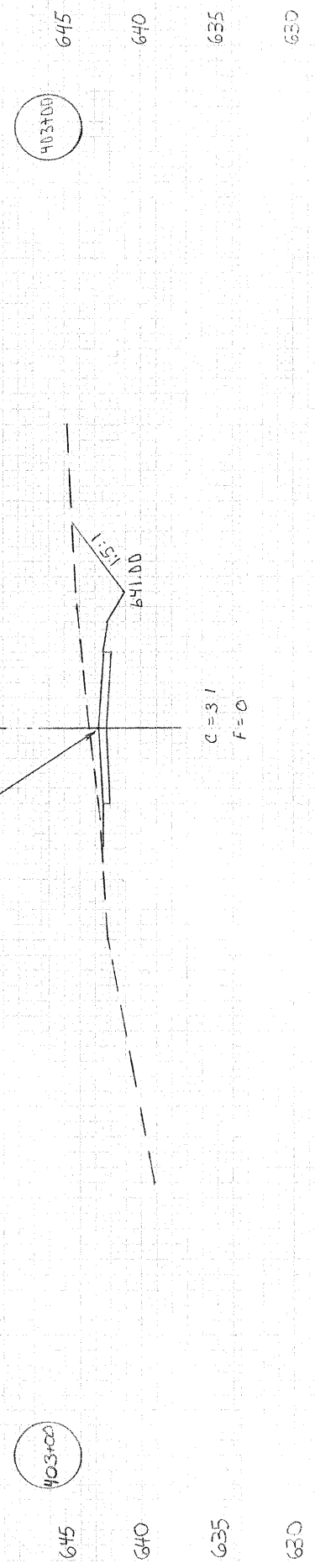
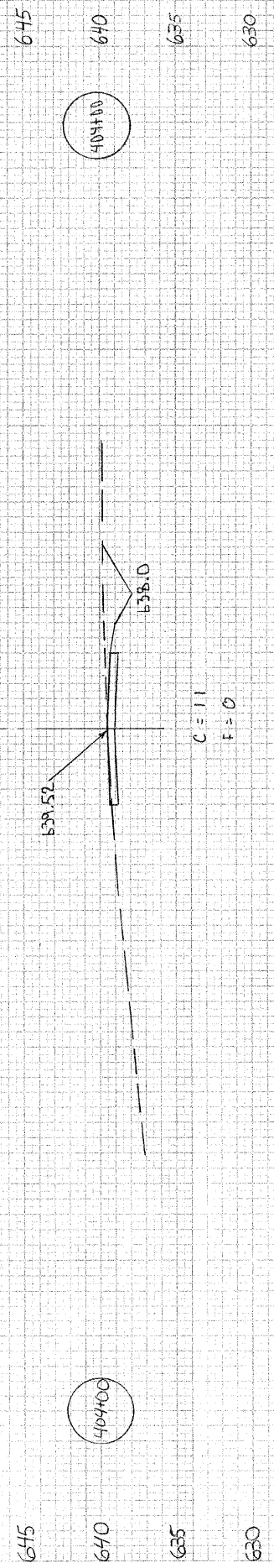
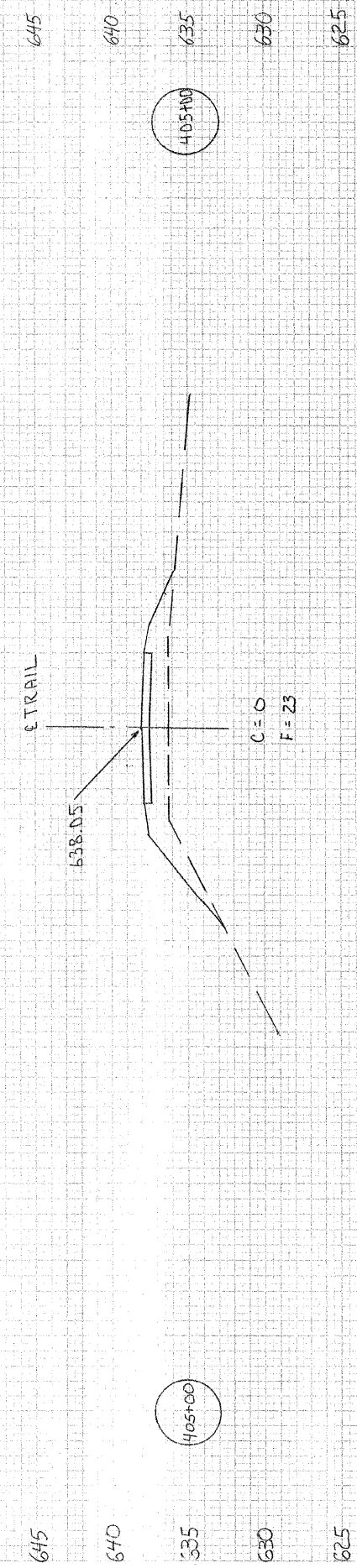
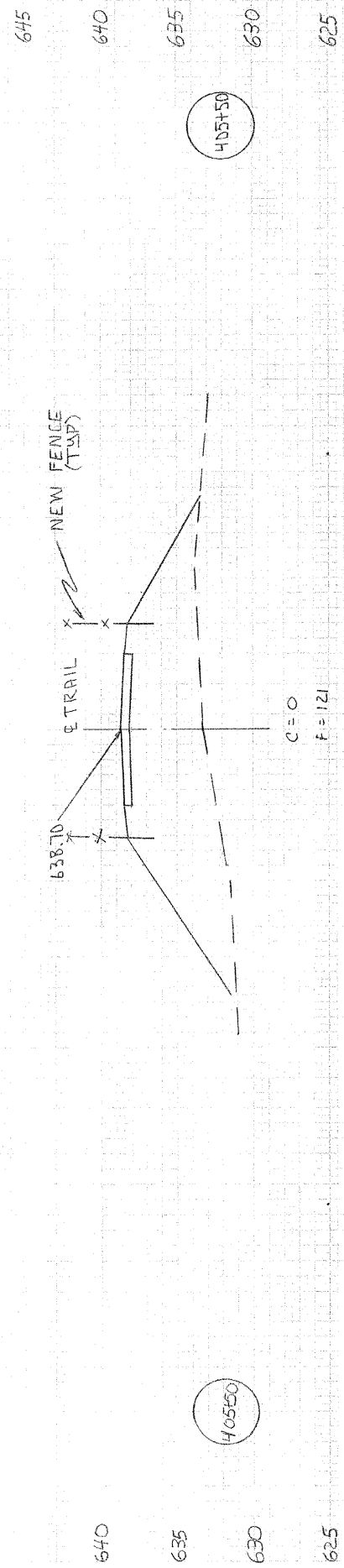


50 45 40 35 30 25 20 15 10 5 4 5 10 15 20 25 30 35 40

50 45 40 35 30 25 20 15 10 5 4 5 10 15 20 25 30 35 40

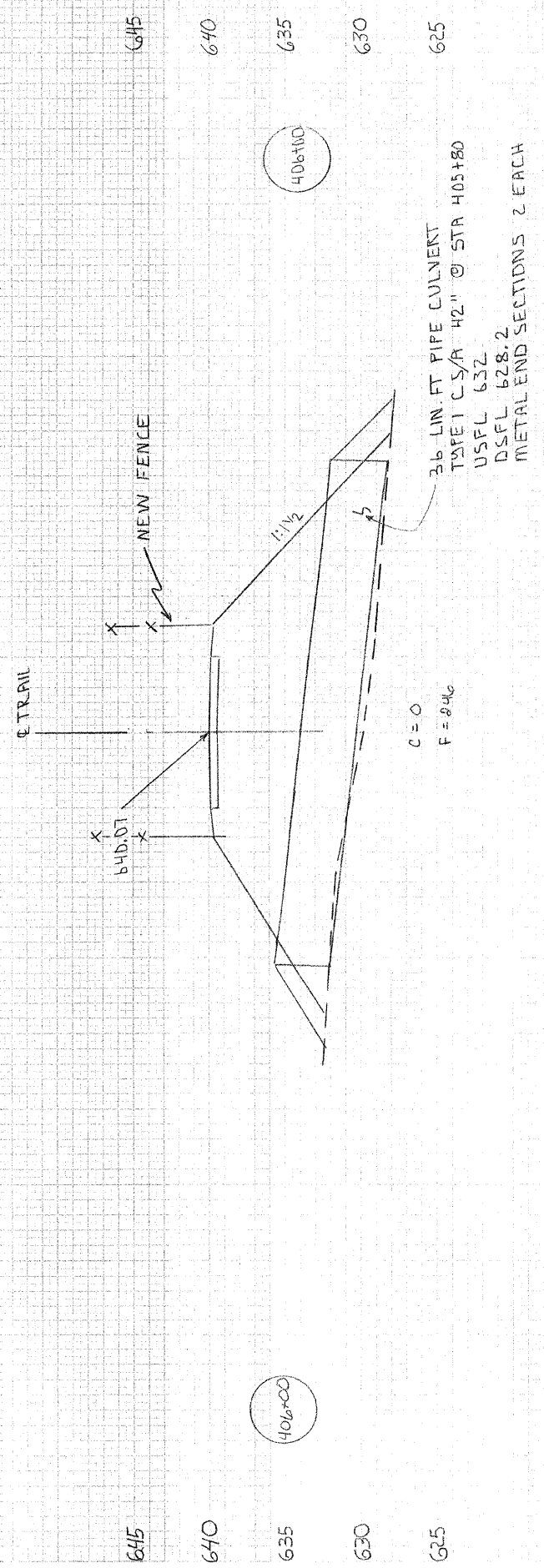
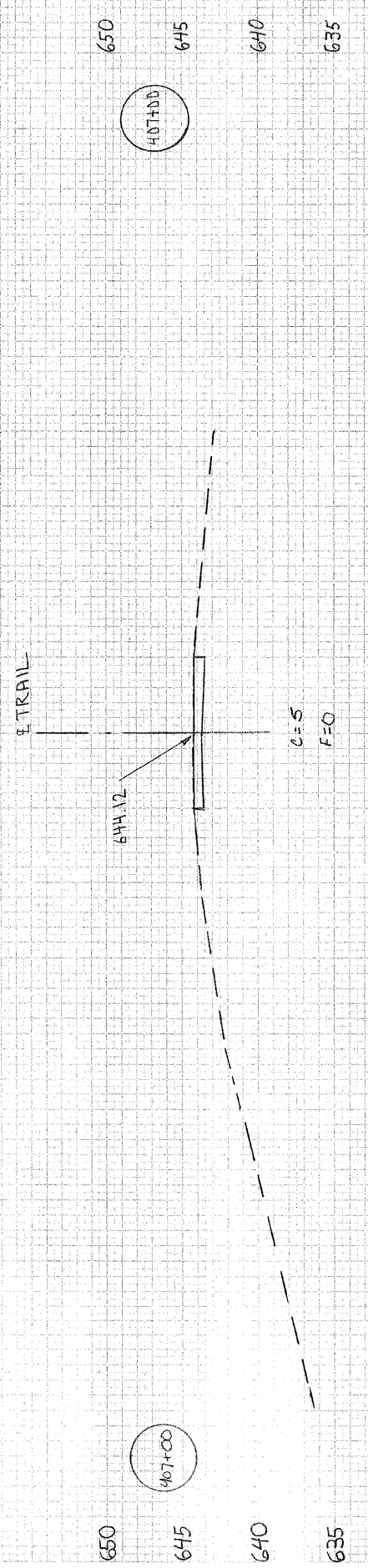
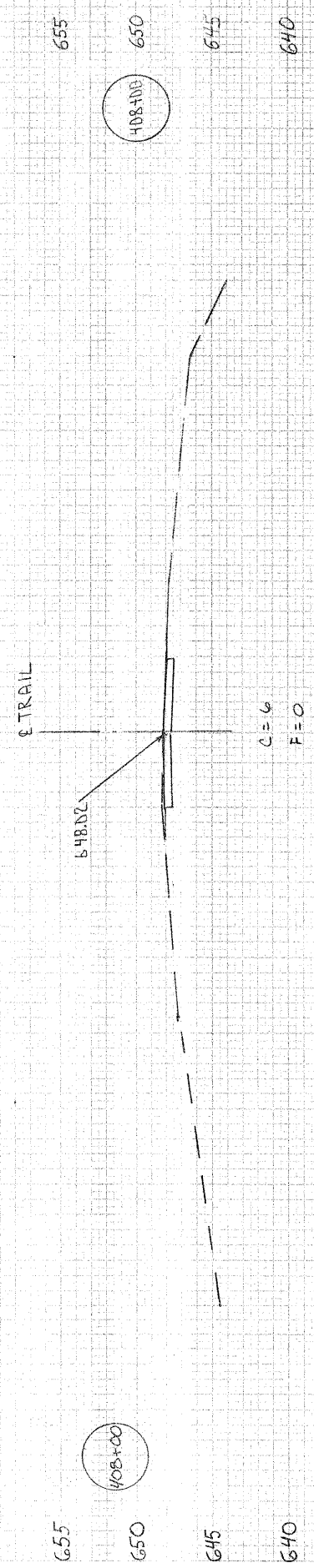
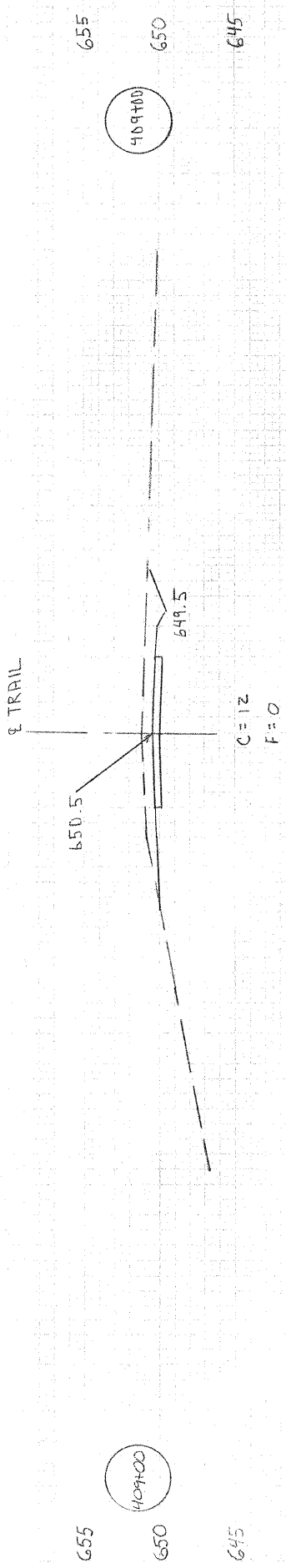


50 45 40 35 30 25 20 15 10 5 0 5 10 15 20 25 30 35 40 45



50 45 40 35 30 25 20 15 10 5 0 5 10 15 20 25 30 35 40

50 45 40 35 30 25 20 15 10 5 0 5 10 15 20 25 30 35 40 45



50 45 40 35 30 25 20 15 10 5 0 5 10 15 20 25 30 35 40

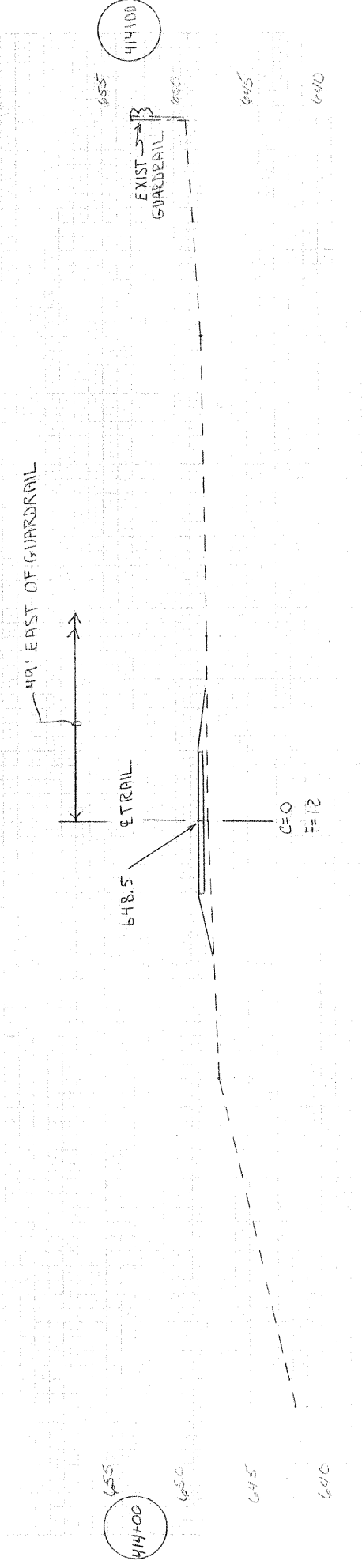
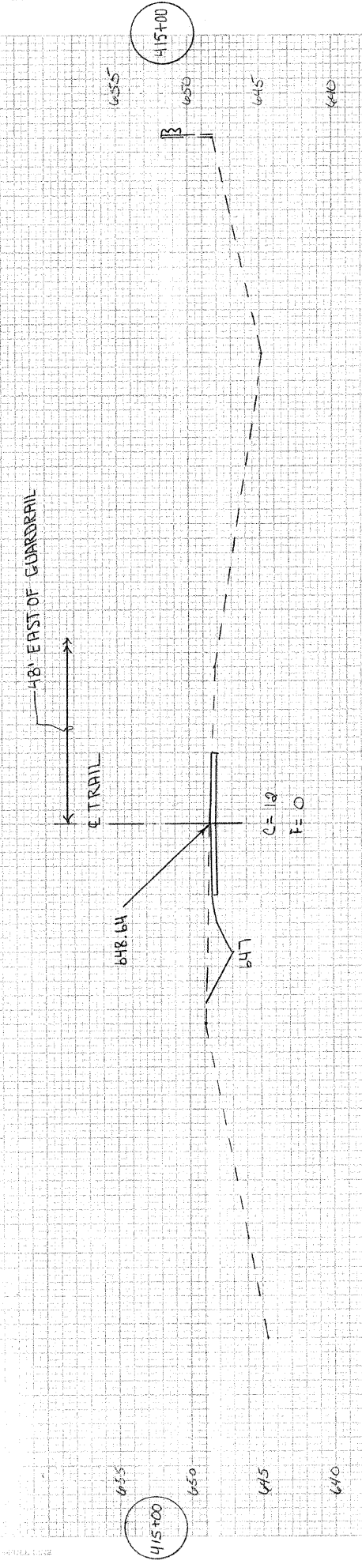
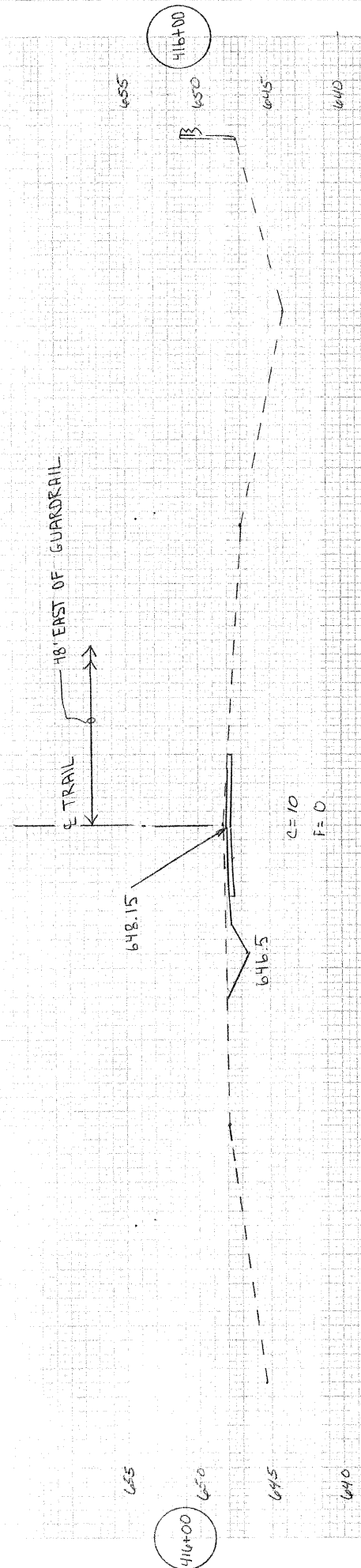
45 40 35 30 25 20 15 10 5 0 5 10 15 20 25 30 35 40 45 50

45 40 35 30 25 20 15 10 5 0 5 10 15 20 25 30 35 40 45 50



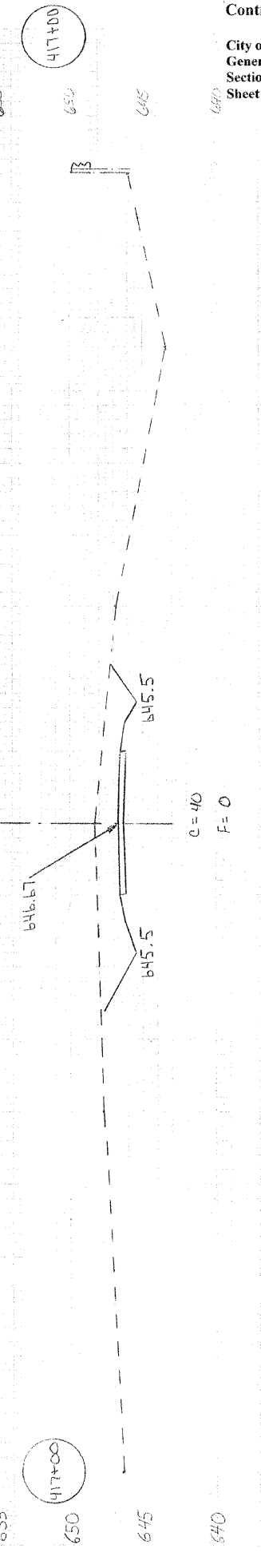
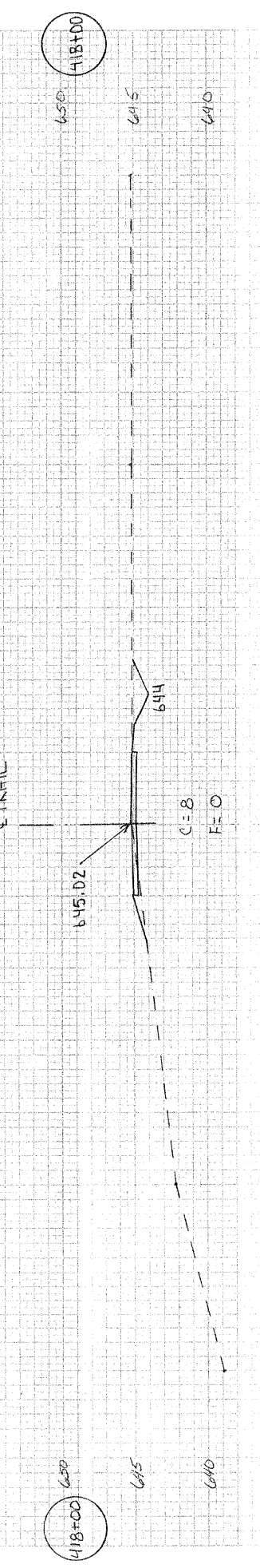
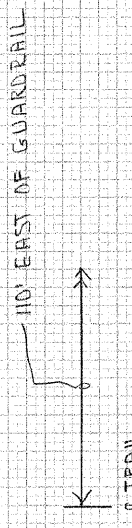
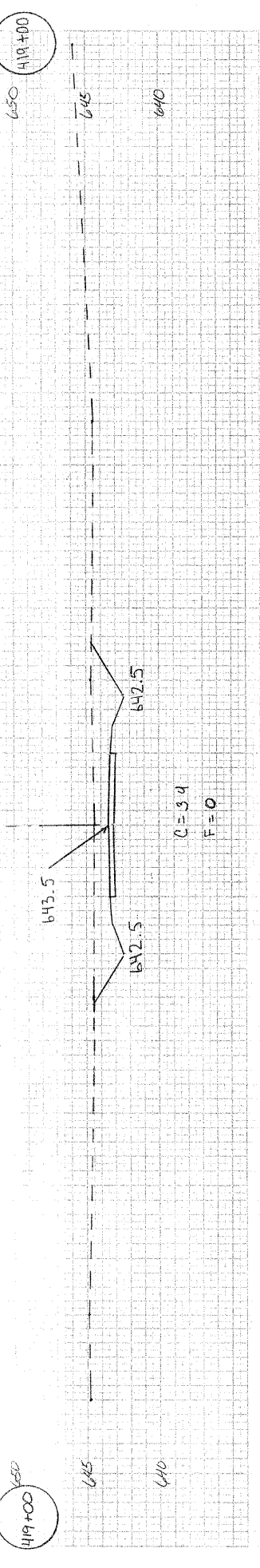
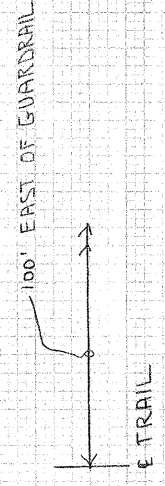
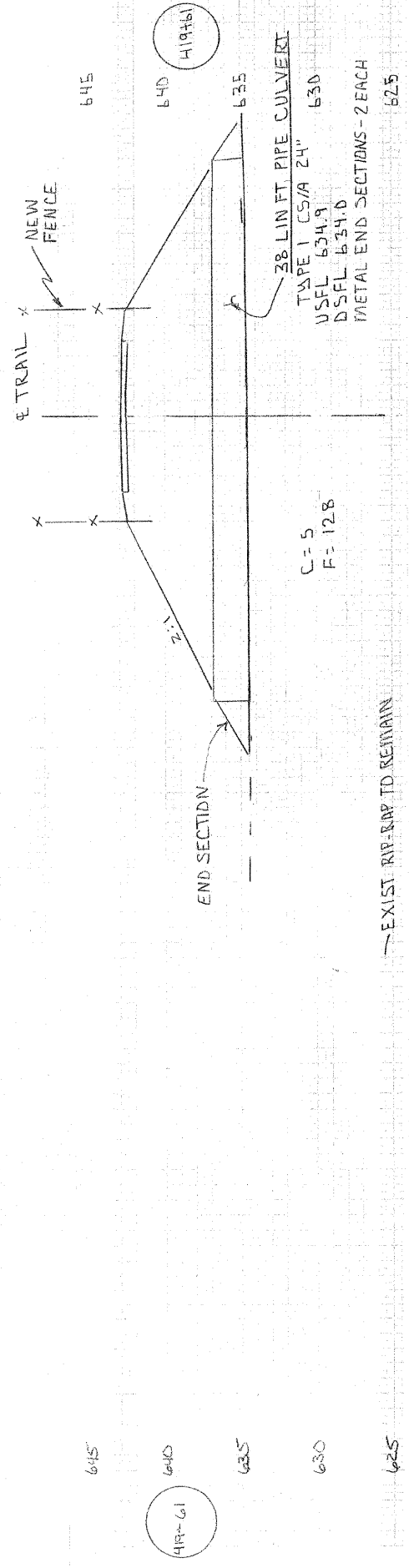
645

45 40 35 30 25 20 15 10 5 0 5 10 15 20 25 30 35 40 45 50



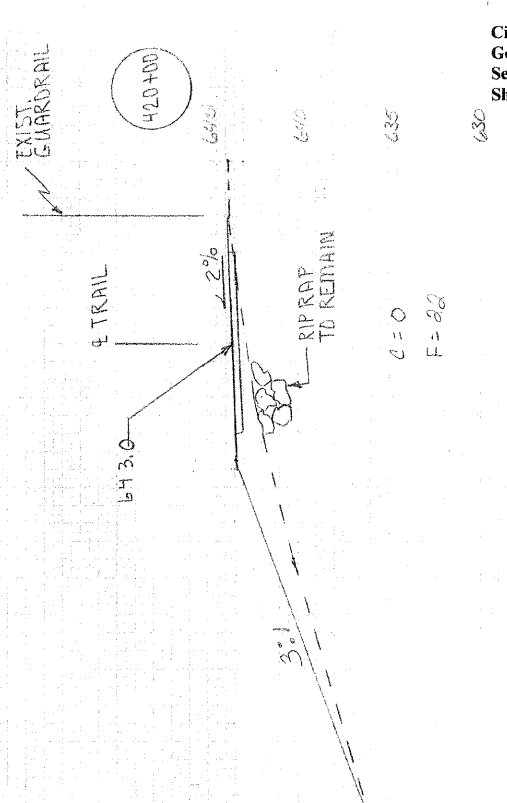
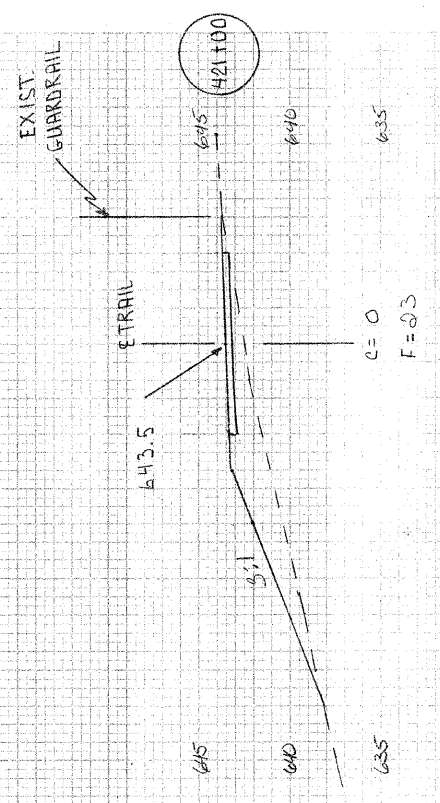
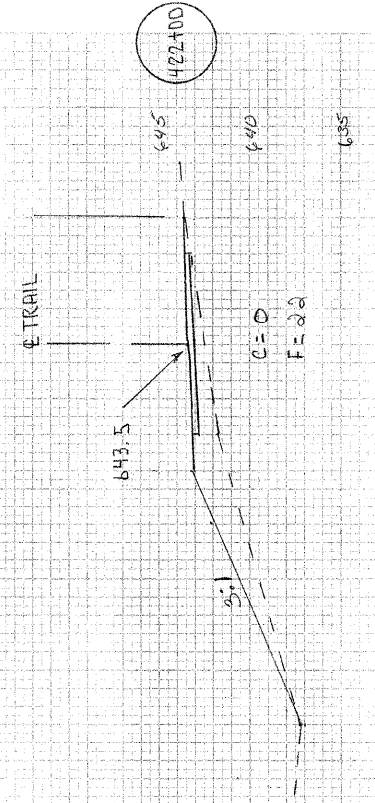
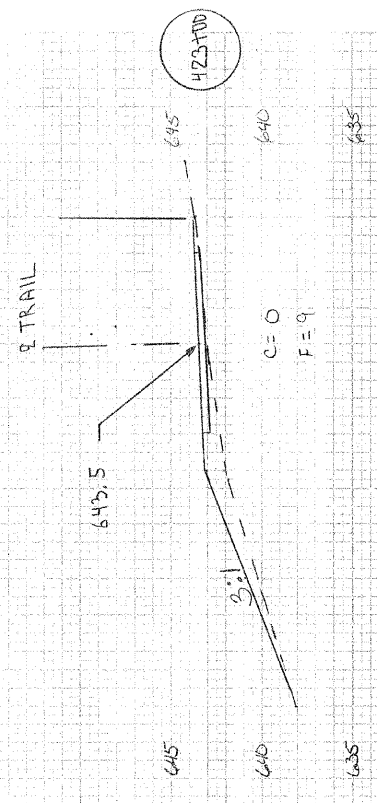
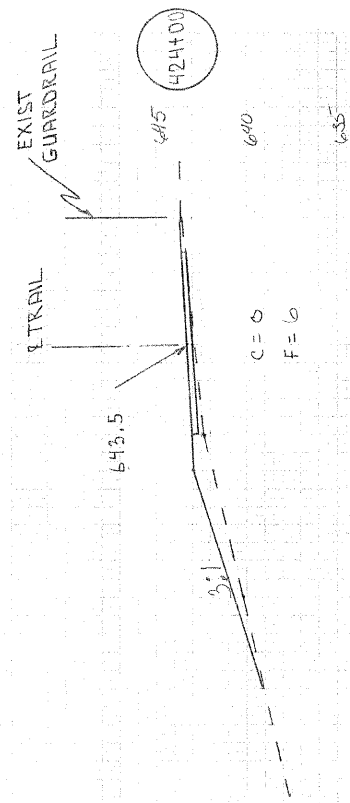
45 40 35 30 25 20 15 10 5 0 5 10 15 20 25 30 35 40 45 50

45 40 35 30 25 20 15 10 5 2 5 10 15 20 25 30 35 40 45 50



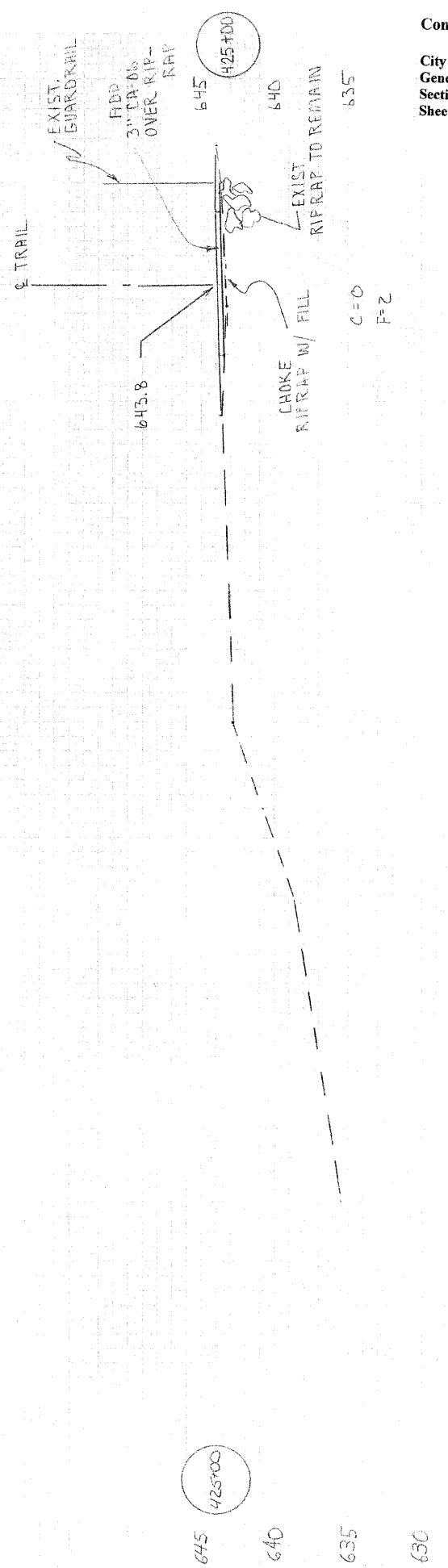
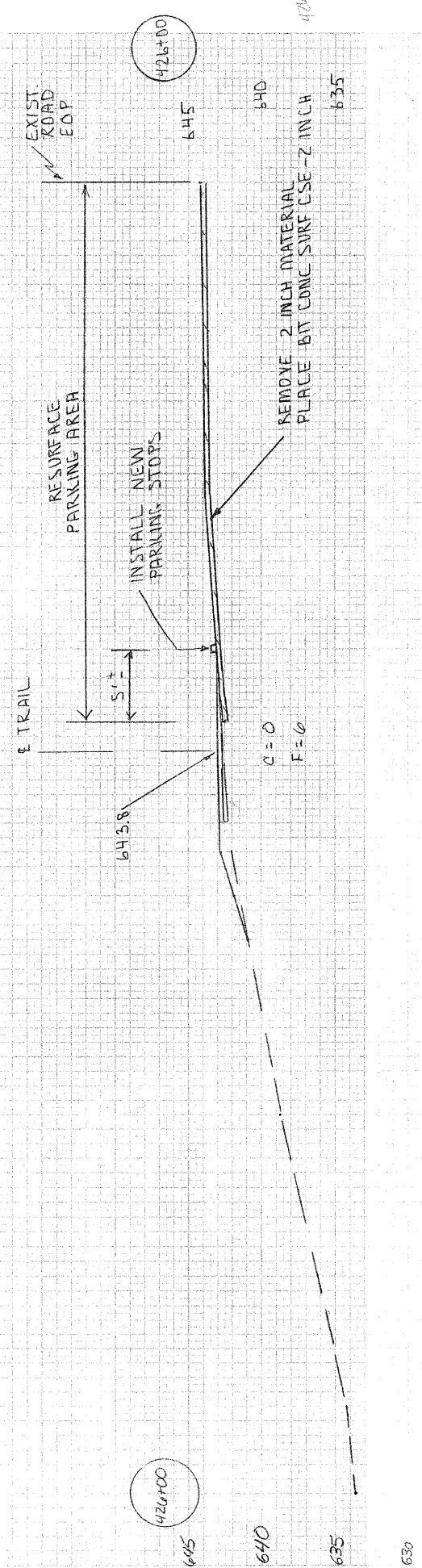
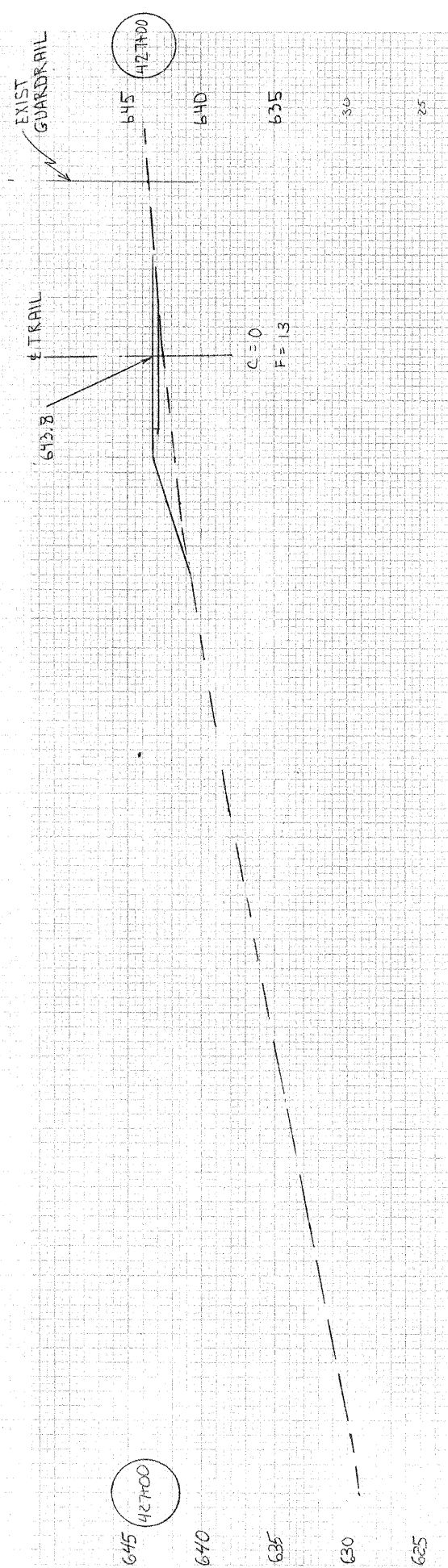
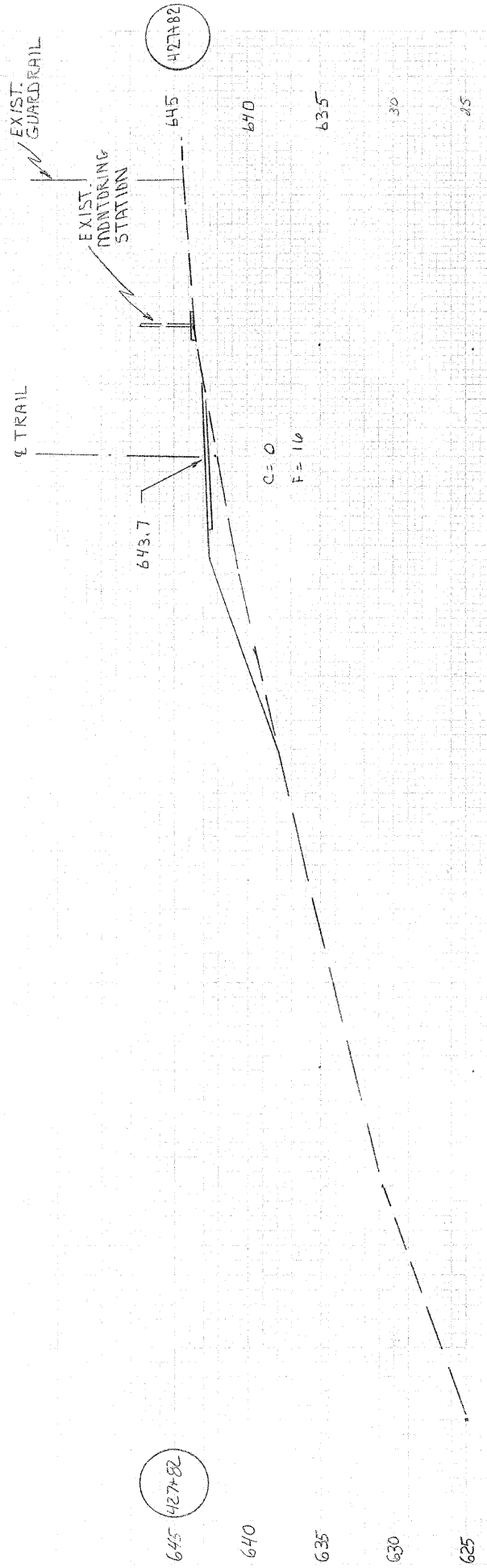
Prop. CIV UTILITIES

90 85 80 75 70 65 60 55 50 45 40 35 30 25 20 15 10 5 0



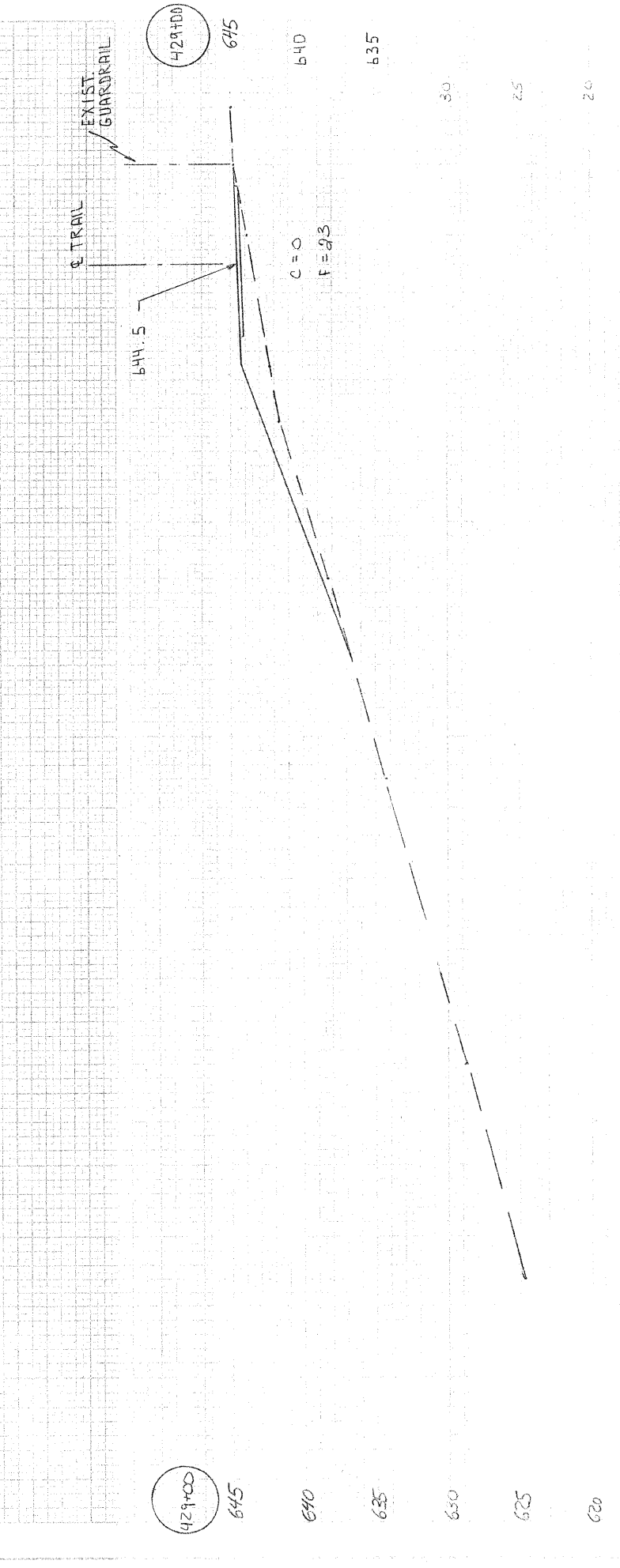
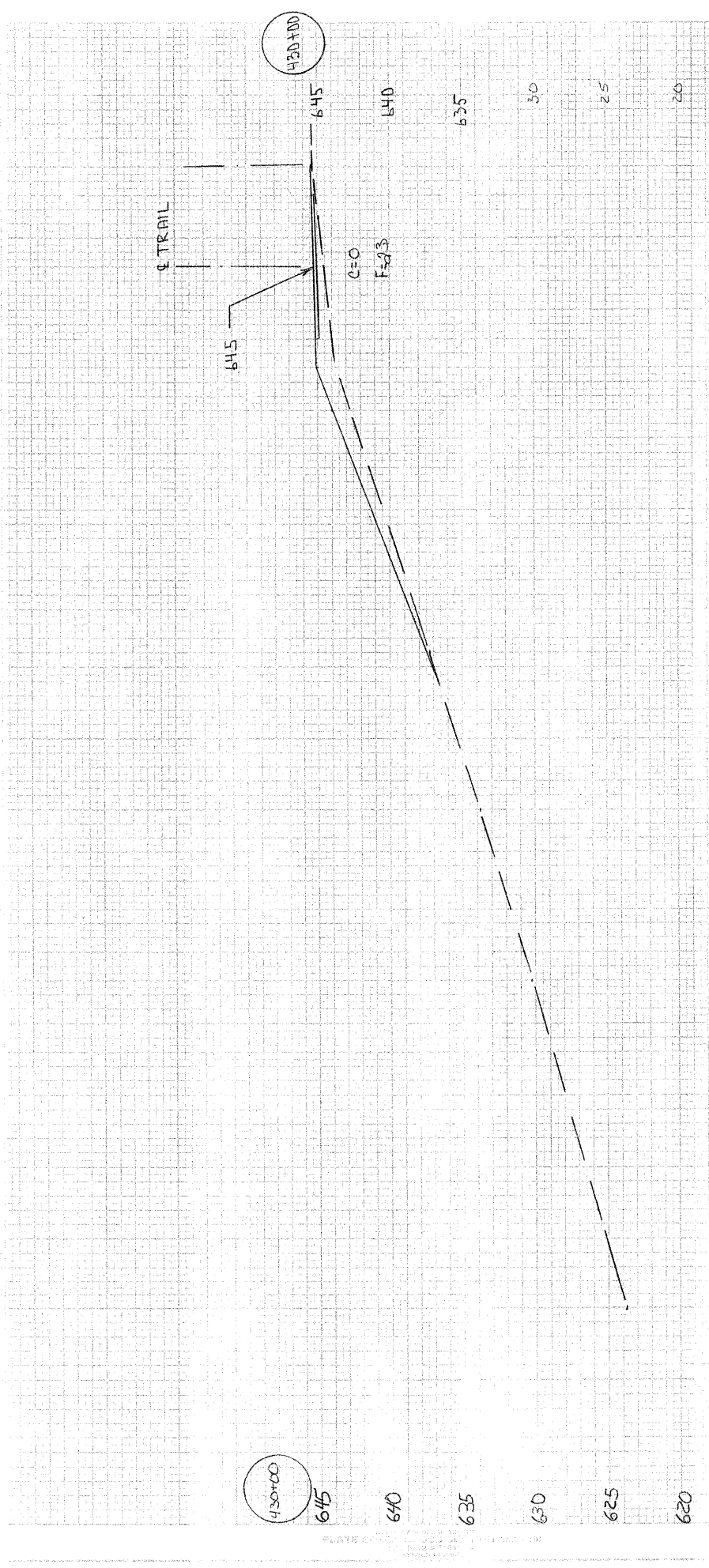
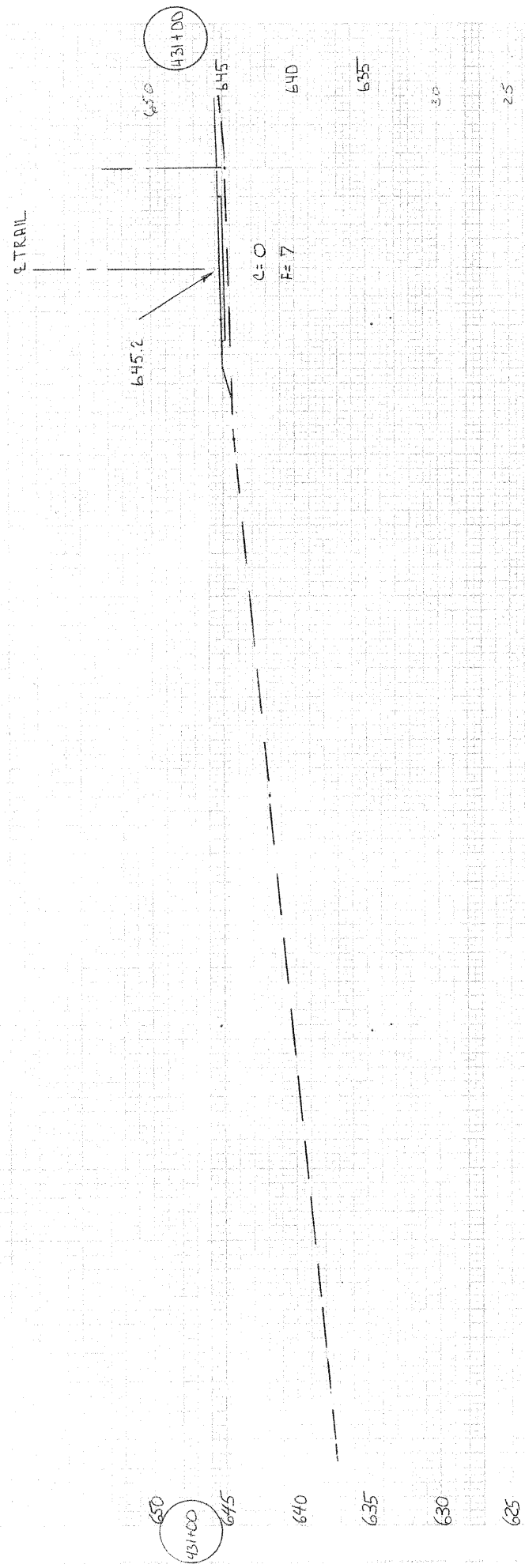
90 85 80 75 70 65 60 55 50 45 40 35 30 25 20 15 10 5 0

70 75 80 85 90 5 10 15 20 25 30 35 40 45 50 55 60 65 70 75 80 85 90



70 75 80 85 90 5 10 15 20 25 30 35 40 45 50 55 60 65 70 75 80 85 90

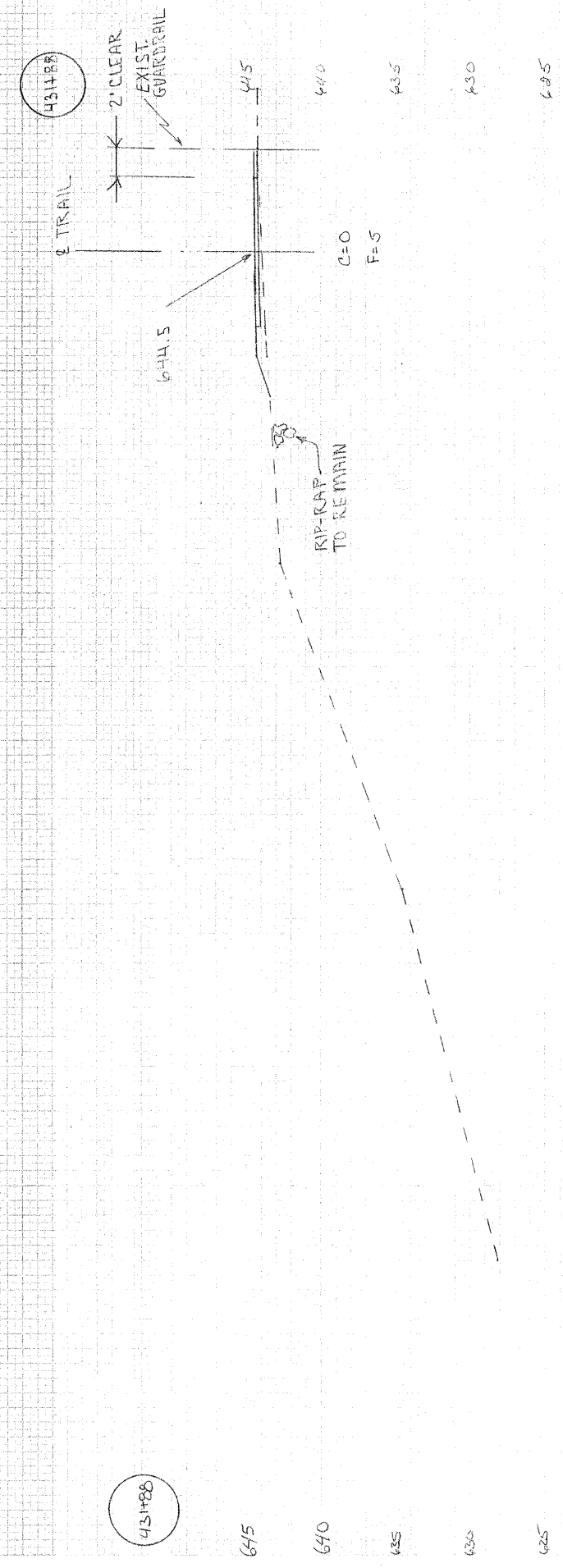
90 85 80 75 70 65 60 55 50 45 40 35 30 25 20 15 10 5 0 R



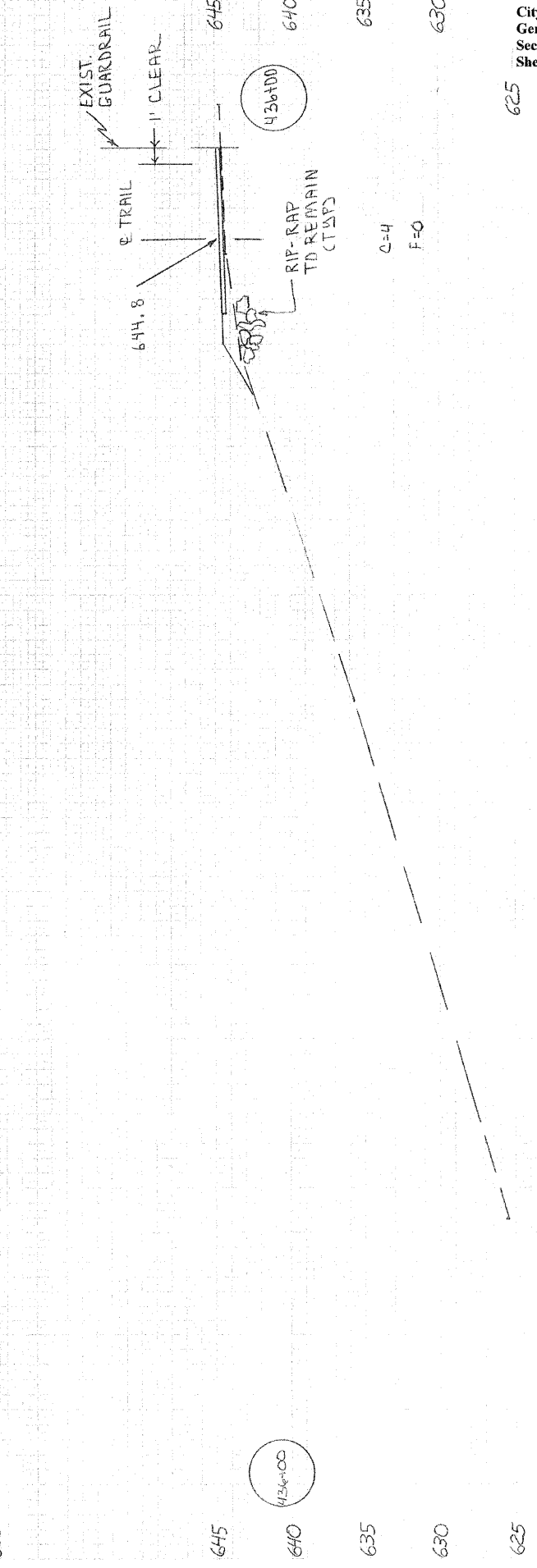
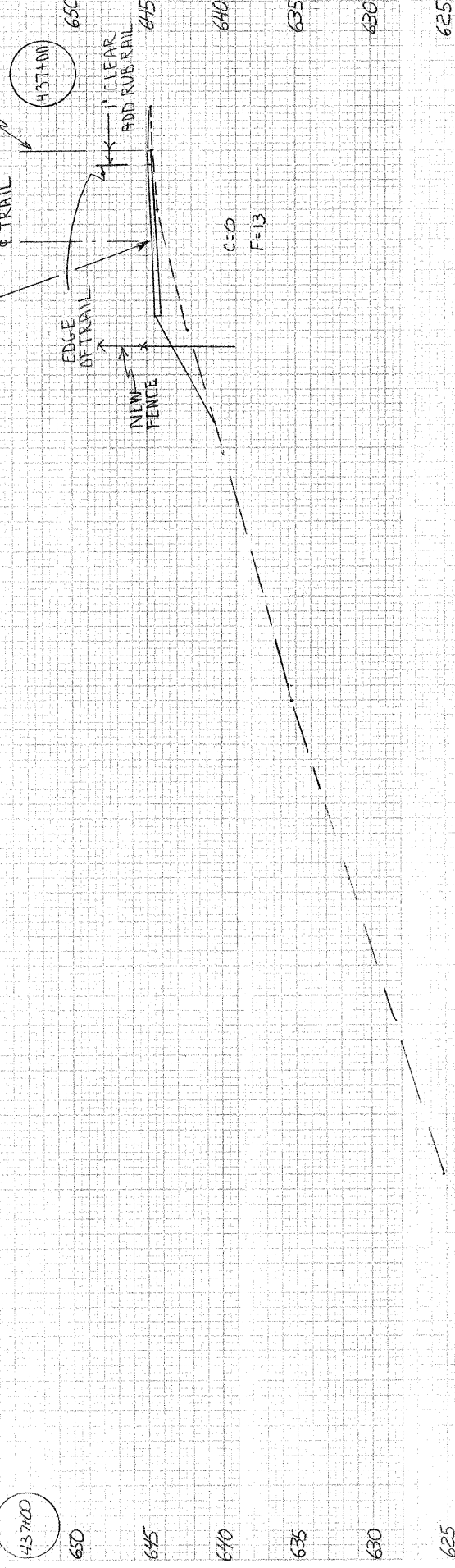
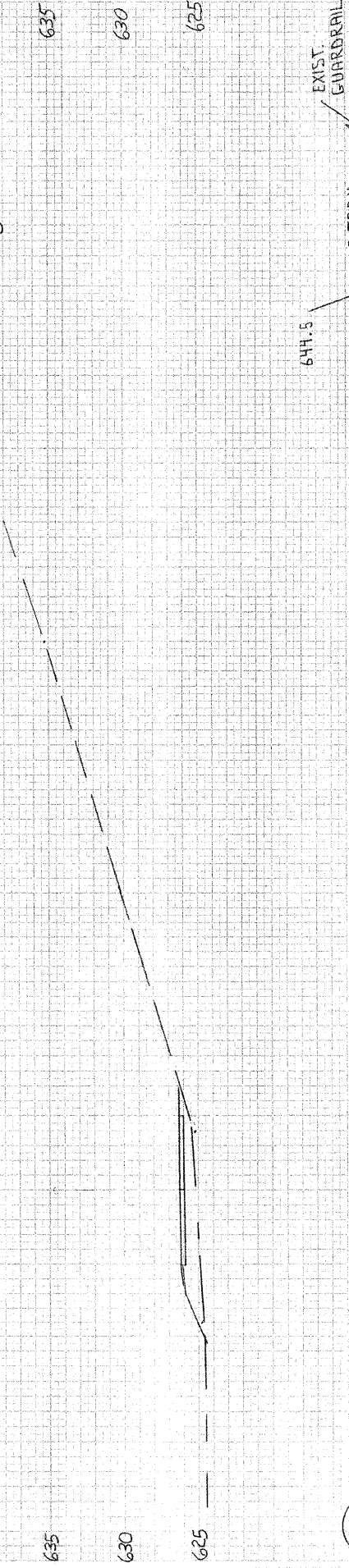
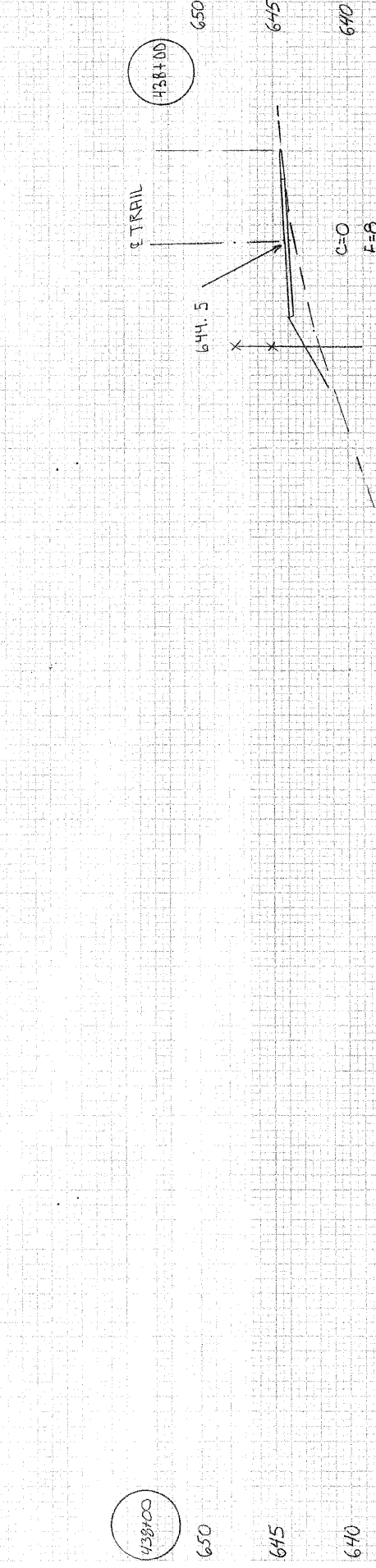
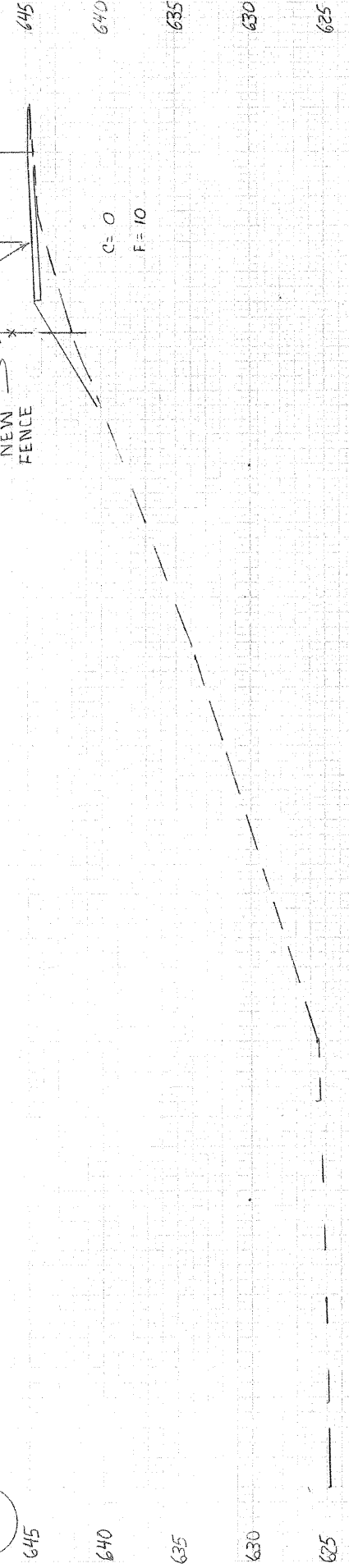
90 85 80 75 70 65 60 55 50 45 40 35 30 25 20 15 10 5 0 L

90 85 80 75 70 65 60 55 50 45 40 35 30 25 20 15 10 5 0

0 5 10 15 20 25 30 35 40 45 50 55 60 65 70 75 80 85 90



70 85 80 75 70 65 60 55 50 45 40 35 30 25 20 15 10 5 R

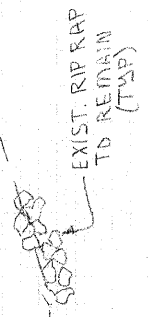
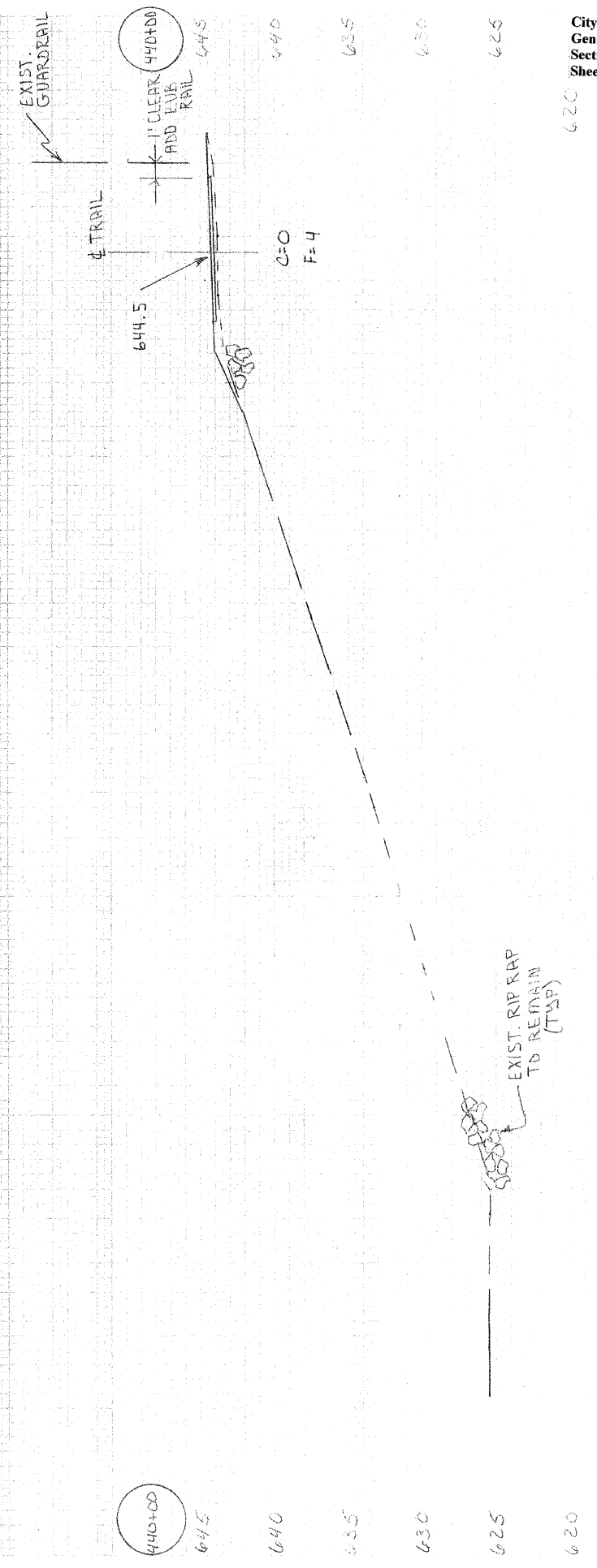
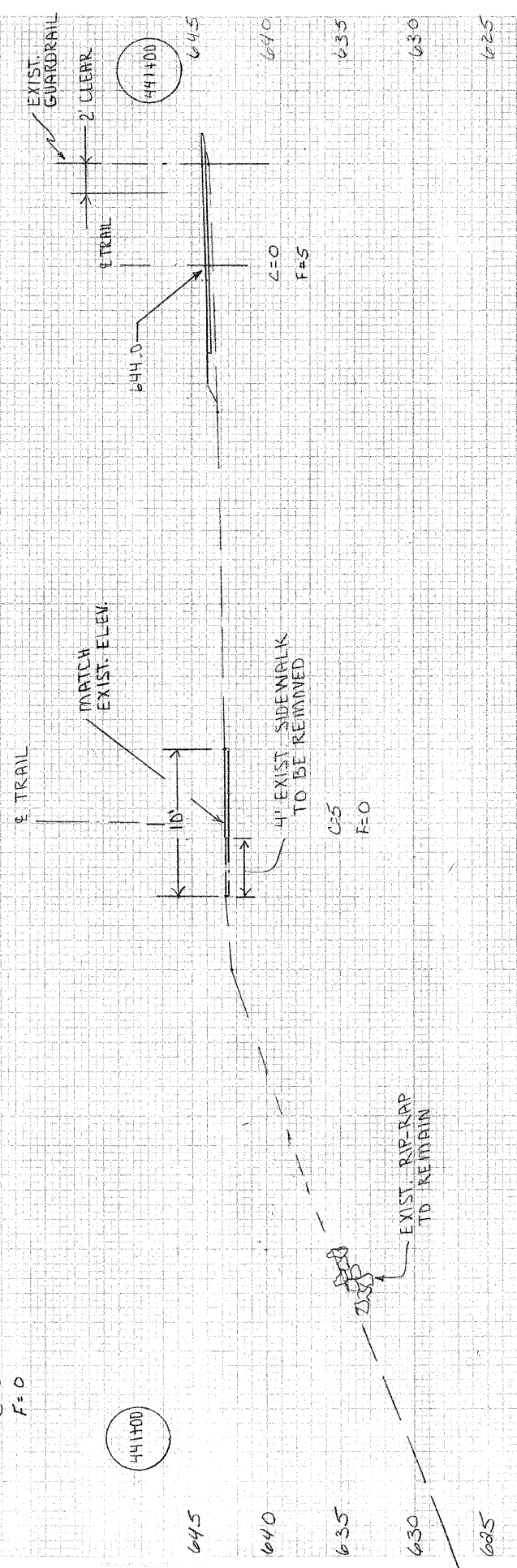
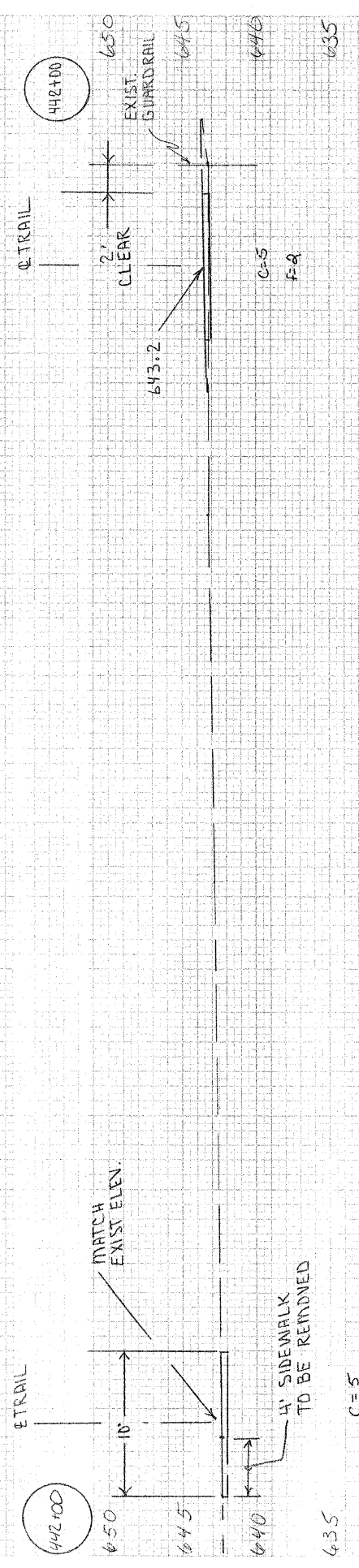
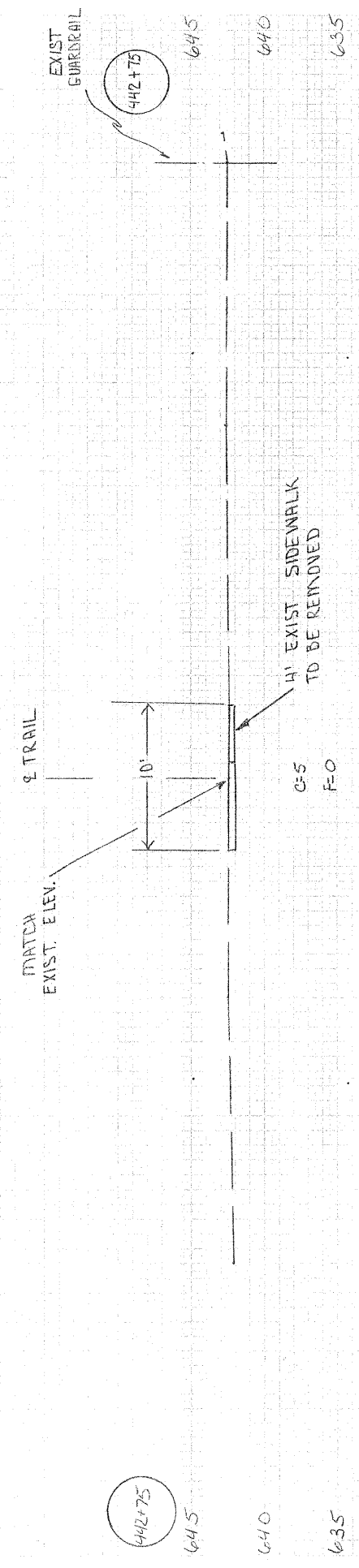


625

70 85 80 75 70 65 60 55 50 45 40 35 30 25 20 15 10 5 R

620

90 85 80 75 70 65 60 55 50 45 40 35 30 25 20 15 10 5 0



90 85 80 75 70 65 60 55 50 45 40 35 30 25 20 15 10 5 0

45 40 35 30 25 20 15 10 5 0 5 10 15 20 25 30 35 40 45

PLANS FOR GENERAL DACEY TRAIL

