

HORIZONTAL CONTROL COORDINATES

POINT	LOCATION	N. COOR.	E. COOR.	ELEV.
HC#1 (IRON PIN)	Q STA. 48+49.83	8952.05	10031.51	534.24
HC#2 (IRON PIN)	Q STA. 51+49.83	9251.94	10039.68	537.65

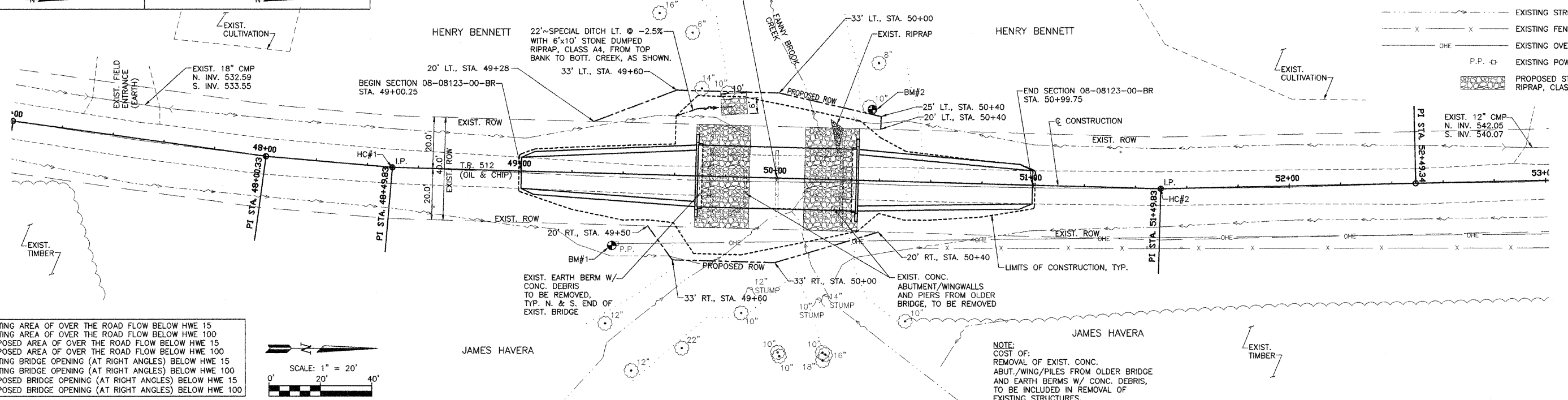
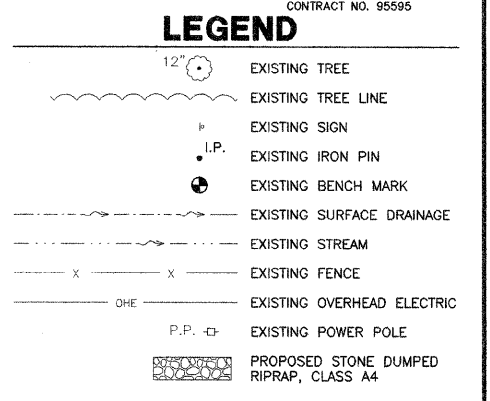
BENCH MARK COORDINATES

POINT	LOCATION	ELEV.
BM#1 (R.R. POWER POLE)	26.9' RT., STA. 49+37.76	533.34
BM#2 (R.R. SPIKE IN 10" TREE)	28.5' LT., STA. 50+35.37	533.06

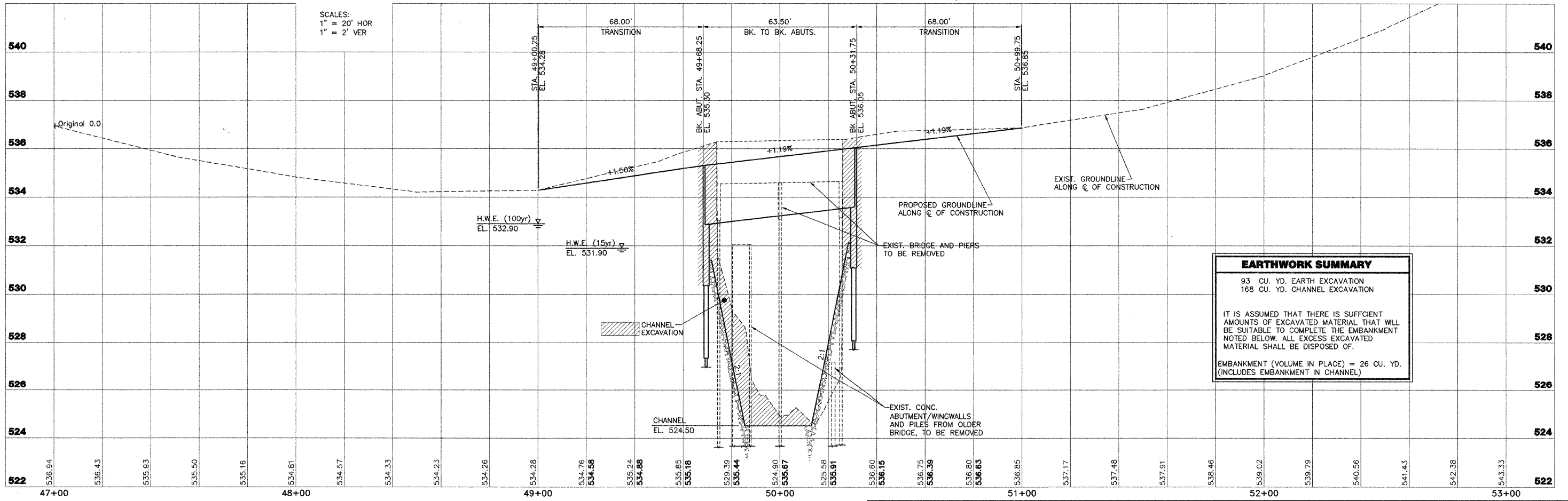
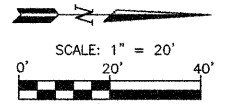
CONSTRUCT SEEDING, CLASS 2 (SPECIAL)
STA. 49+00.25 TO STA. 50+99.75 = 0.1 ACRE

ROUTE NO.	SECTION	COUNTY	TOTAL SHEETS	SHEET NO.
TR 512	08-08123-00-BR	FAYETTE	14	3

FED. ROAD DIST. NO. ILLINOIS PROJECT CONTRACT NO. 95595



0	SF EXISTING AREA OF OVER THE ROAD FLOW BELOW HWE 15
0	SF EXISTING AREA OF OVER THE ROAD FLOW BELOW HWE 100
0	SF PROPOSED AREA OF OVER THE ROAD FLOW BELOW HWE 15
0	SF PROPOSED AREA OF OVER THE ROAD FLOW BELOW HWE 100
256	SF EXISTING BRIDGE OPENING (AT RIGHT ANGLES) BELOW HWE 15
305	SF EXISTING BRIDGE OPENING (AT RIGHT ANGLES) BELOW HWE 100
317	SF PROPOSED BRIDGE OPENING (AT RIGHT ANGLES) BELOW HWE 15
375	SF PROPOSED BRIDGE OPENING (AT RIGHT ANGLES) BELOW HWE 100



EARTHWORK SUMMARY

93 CU. YD. EARTH EXCAVATION	530
168 CU. YD. CHANNEL EXCAVATION	530

IT IS ASSUMED THAT THERE IS SUFFICIENT AMOUNTS OF EXCAVATED MATERIAL THAT WILL BE SUITABLE TO COMPLETE THE EMBANKMENT NOTED BELOW. ALL EXCESS EXCAVATED MATERIAL SHALL BE DISPOSED OF.

EMBANKMENT (VOLUME IN PLACE) = 26 CU. YD. (INCLUDES EMBANKMENT IN CHANNEL)

AECOM 2524 South Broadway, Salem, Illinois 62881, t618.548.3500, www.aecom.com, Copyright 2009, By: AECOM, IL Design Firm Reg. No. 184203706

TR 512, SECTION 08-08123-00-BR
LOUDON ROAD DISTRICT
FAYETTE COUNTY, ILLINOIS

PLAN AND PROFILE
STA. 47+00 TO STA. 53+00

SURVEY	CHECKED	DATE
JAS	JAS	07-27-09
DESIGN	APPROVED	REVISED
MRQ	MRQ	
DRAWN	JSD, BLT	JOB NO.
		200804643