

INDEX OF SHEETS

- 1 Cover Sheet
- 2 Summary of Quantities, General Notes, and Typical Sections
- 3 Plan and Profile
- 4 Horizontal Layout
- 5-10 Station Cross Sections
- 11 Stormwater Pollution Prevention & Erosion Control Plan
- 12-17 Bridge Plans

LIST OF STANDARDS

- Standard 000001-05 Standard symbols, abbreviations and patterns
- Standard 280001-04 Temporary erosion control systems
- Standard 515001-03 Name plate for bridges
- Standard 630301-05 Shoulder Widening for Type 1 (Special) Guardrail Terminals
- Standard 631032-04 Traffic Barrier Terminal, Type 6A
- Standard 635006-03 Reflector and Terminal Marker Placement
- Standard 665001-02 Woven Wire Fence
- Standard 701011-02 Off-road moving operations, 2-l, 2-w, day only
- Standard 701301-03 Lane closure, 2-l, 2-w, short time operations
- Standard 701901-01 Traffic control devices
- Standard BLR-21-8 Typical application of traffic control devices for Construction on Rural Local Highways
- Standard BLR-22-6 Typical application of traffic control devices 2-l, 2-w, rural, Road closed to Thru Traffic

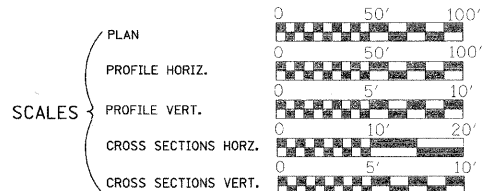
ROADWAY CLASSIFICATION: MAJOR COLLECTOR (NON-URBAN)
 2027 ADT = 450
 DESIGN SPEED: 60 MPH

JOINT UTILITY LOCATING INFORMATION FOR EXCAVATORS
 J.U.L.I.E. Telephone No. Toll Free 1-800-892-0123

CONTRACT NO. : 95599

URS
 345 EAST ASH AVENUE, SUITE B
 DECATUR, ILLINOIS 62526
 PH. 217-875-4800

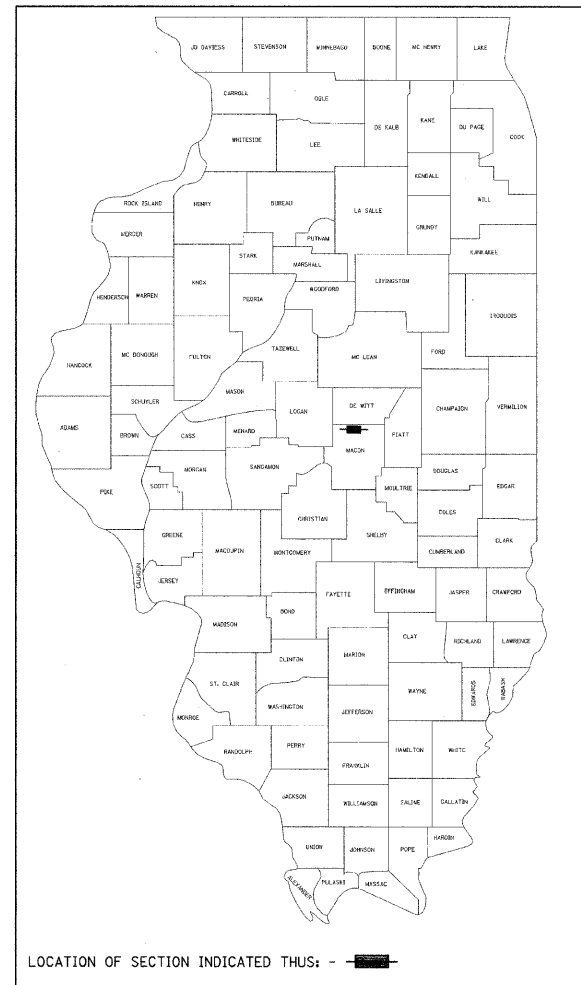
STATE OF ILLINOIS
 DEPARTMENT OF TRANSPORTATION
 DIVISION OF HIGHWAYS
**PLANS FOR PROPOSED
 LOCAL AGENCY IMPROVEMENT**



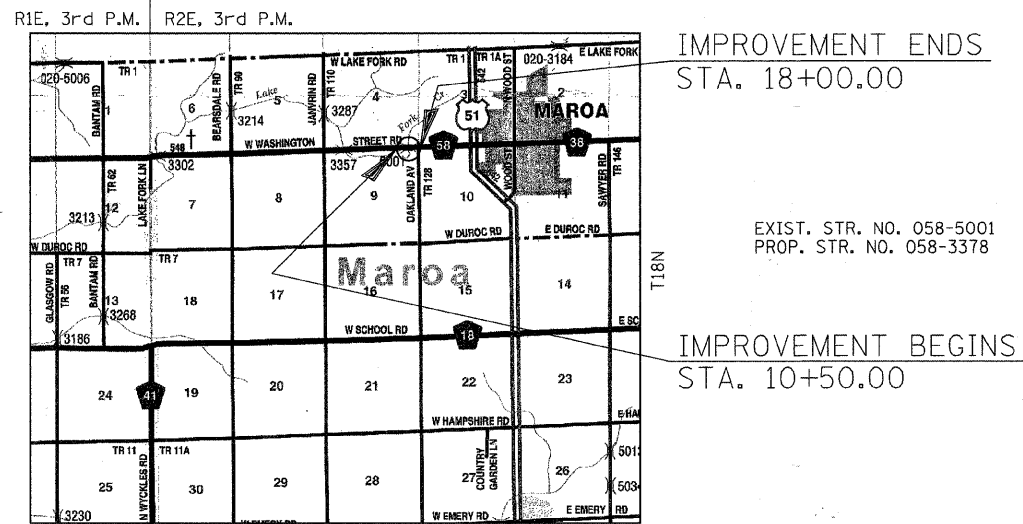
AMERICAN RECOVERY &
 REINVESTMENT ACT
 F.A.S. 548 (WASHINGTON STREET)
 OVER LAKE FORK CREEK
 SECTION 05-00196-00-BR
 MACON COUNTY
 PROJECT ARA-0548(103)
 C-97-001-10

RTE. NO.	SECTION	COUNTY	TOTAL SHEETS	SHEET NO.
F.A.S. 548	05-00196-00-BR	MACON	17	1
FED. ROAD DIST. NO.	ILLINOIS	PROJECT: ARA-0548(103)		

CONTRACT NO. 95599



LOCATION OF SECTION INDICATED THUS: - [rectangle] -



IMPROVEMENT CONSISTS OF THE REMOVAL OF A TRIPLE 9' x 6' CAST IN PLACE CONCRETE BOX CULVERT WITH CONCRETE HEADWALLS, 32'-0" 0-0 HEADWALLS AND THE CONSTRUCTION OF A SINGLE SPAN PRECAST PRESTRESSED CONCRETE DECK BEAM BRIDGE ON CONCRETE SPILL THRU ABUTMENTS. TOTAL LENGTH = 59'-8", WIDTH = 30'-0" 0-0. DECK AND NECESSARY APPROACH ROADWAY WORK.

LAYOUT

Approximate Scale: scale miles

Total and Net Length of Improvement 750.00 Feet = 0.142 Miles

IMPROVEMENT ENDS
 STA. 18+00.00

IMPROVEMENT BEGINS
 STA. 10+50.00

EXIST. STR. NO. 058-5001
 PROP. STR. NO. 058-3378



EXP. 11/30/09
Keith W. Bentley
 Illinois Professional No. 43789

APPROVED August 14 2009
John H. S.
 COUNTY ENGINEER

PASSED Aug 20 2009
Maureen J. Canal
 DESIGNATED SENIOR ENGINEER OF LOCAL ROADS & STREETS

RELEASING FOR BID BASED ON LIMITED REVIEW Aug 20 2009
Roger L. Diaballo
 DEPUTY DIRECTOR OF HIGHWAYS, REGION FOUR ENGINEER

STATE OF ILLINOIS
 DEPARTMENT OF TRANSPORTATION

8/14/2009
 Date