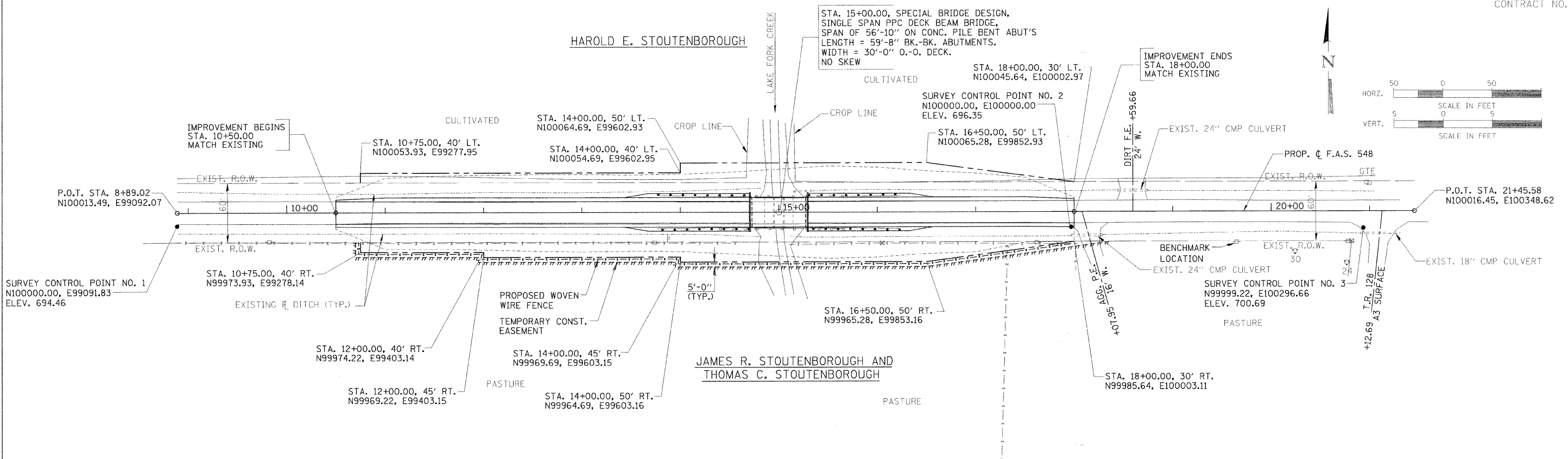


RT.	SECTION	COUNTY	TOTAL SHEETS	SHEET NO.
FAS 548	05-00196-00-BR	MACON	17	4
STA. 10+50.00		TO STA. 18+00.00		
FED. ROAD DIST. NO.		ILLINOIS	PROJECT: ARA-0548-(103)	

CONTRACT NO. 95599



PROPOSED STRUCTURE LAYOUT

<u>WEST ABUTMENT</u>	<u>EAST ABUTMENT</u>
BK. OF W. ABUT. STA. 14+70.17 N100014.86, E99673.21	BK. OF E. ABUT. STA. 15+29.83 N100015.00, E99732.87
☐ W. ABUT. STA. 14+71.42 N100014.86, E99674.46	☐ E. ABUT. STA. 15+28.58 N100015.00, E99731.62

SHOULDER WIDENING FOR GUARDRAIL TERMINALS

<u>WEST</u>	<u>EAST</u>
STA. 13+43.00, 15' LT. & RT.	STA. 15+29.83, 19' LT. & RT.
STA. 13+67.00, 19' LT. & RT.	STA. 16+33.00, 19' LT. & RT.
STA. 14+70.17, 19' LT. & RT.	STA. 16+57.00, 15' LT. & RT.

NOTE:  
FOR TIE POINTS AND BENCHMARK INFORMATION,  
SEE SHEET 3 OF 17.

DATE	BY
DATE	BY
DATE	BY
DATE	BY

DATE	BY
DATE	BY
DATE	BY
DATE	BY

HORIZONTAL LAYOUT